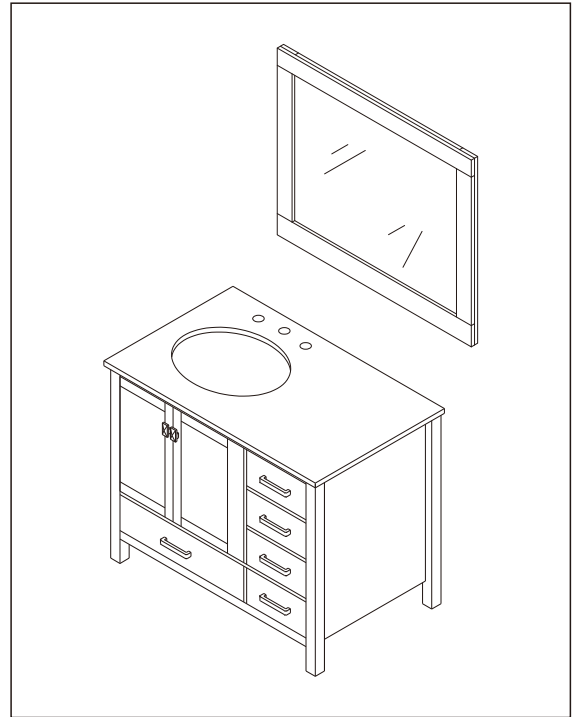
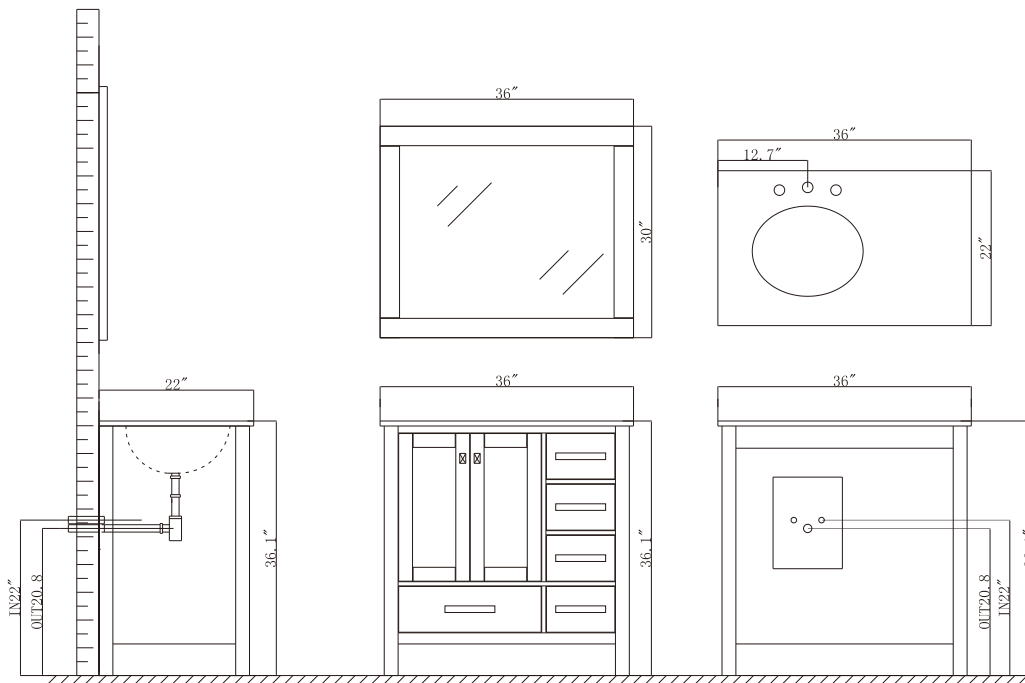


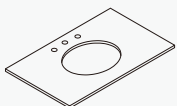
- Please check your product packaging to make sure the included accessories are in the “list of standard accessories”. If any parts are missing, please contact your local dealer immediately.
- Do not allow any sharp objects to come in contact with the cabinet, as it will scratch the surface.
- Continuous and prolonged exposure to direct sunlight may cause discoloration to the wood.
- Do not put any hot appliances directly on or near the cabinet.
- Please avoid using cleaning products that contain bleach or ammonia.
- Wood surfaces should only be cleaned with wood care products such as soapy water or furniture polish.



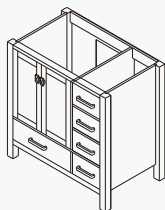
INSTALLATION



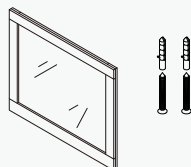
MAIN BODY PARTS



Countertop & Ceramic basin/1



Main cabinet/1



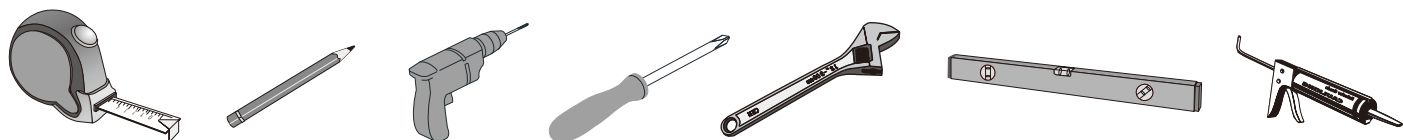
Mirror/1

INSTALLATION PARTS

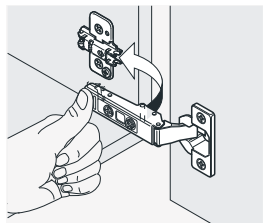


Install screw/2

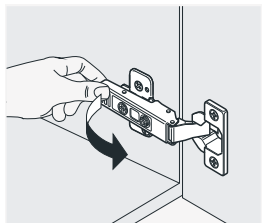
ERECTING TOOL



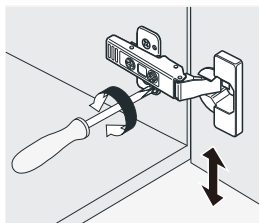
INSTALL, REMOVE, ADJUST OF TOP FAST LOADING HINGE



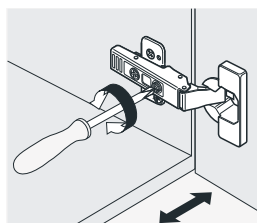
install



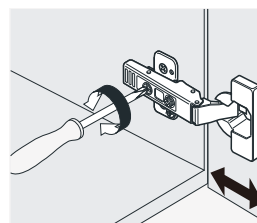
remove



adjust the height

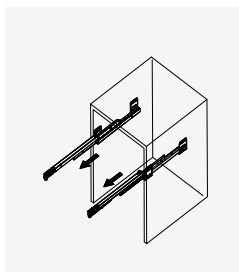


adjust the lateral

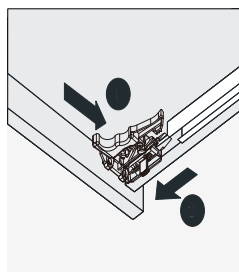
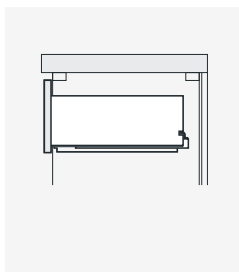
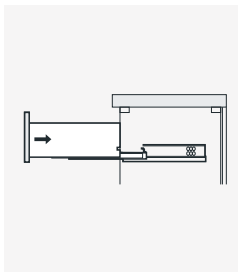


adjust the deep

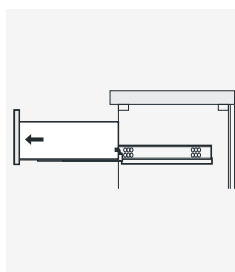
DRAWER'S ADJUSTUS



install



remove



INSTALLATION INSTRUCTIONS

