



Vertical Shower Shelf Install Guide

Congratulations on the purchase of your American Bath Factory Shower Shelf. These instructions will help guide you through the installation.

check for stud locations

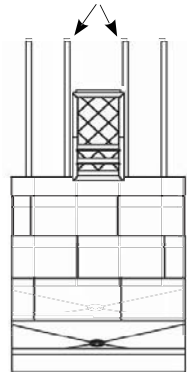


fig. 1

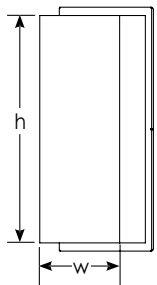


fig. 2

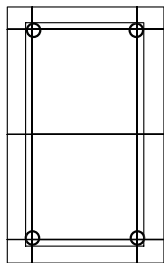


fig. 3

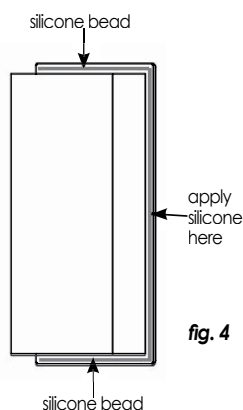


fig. 4

TOOLS AND SUPPLIES YOU MAY NEED FOR INSTALLATION:

<input type="checkbox"/> PENCIL OR MARKER	<input type="checkbox"/> WOOD SHIMS
<input type="checkbox"/> DRILL WITH 5/8" DRILL BIT	<input type="checkbox"/> SILICONE
<input type="checkbox"/> MASKING/PAINTERS TAPE	<input type="checkbox"/> CAULKING GUN
<input type="checkbox"/> 4" HANDHELD MAKITA GRINDER W/ TILE BLADE	<input type="checkbox"/> CLEAN CLOTH
<input type="checkbox"/> STRAIGHT EDGE	<input type="checkbox"/> GROUT**

1. The vertical shower shelf is designed to fit between the studs in your walls. Before installing your shower system check and mark where the studs are so you can properly place the shower shelf (fig. 1). (It is not necessary, but if you wish, you can add a horizontal 2 x 4 brace 1/2" - 1" below the shelf's desired height. This will give you a platform to support the shelf. After the walls have been installed place shims between the 2 x 4 and the bottom of the shelf in order to add support to the unit.)
2. Measure the backside of the shower shelf (fig. 2).
3. Mark the wall panel where you wish to install the shelf (fig. 3)
4. Double check your measurements.
5. Drill a 5/8" hole in each corner of your outline. Be sure not to drill outside the marked lines (fig. 3).
6. Use masking tape to tape the edge to be cut. This will protect the tile from getting scratched by the grinder's tile blade.
7. Insert the tile blade through the 5/8" hole and cut through the tile and cement board along the lines that you marked.
8. Pull the cut section out of the wall.
9. Carefully dry fit the shelf into position. Adjust the cut and/or shim if necessary.
10. When the shampoo shelf fits correctly apply a continuous bead of silicone to the bullnose edge of the shelf (fig. 4).
11. Set the shelf into position and apply pressure to ensure adhesion, brace as necessary until silicone is dry.
12. Wipe off any excess silicone with a clean cloth. Seal around the edge of the shelf to prevent water damage.

**You may grout the shower niche before or after installing it. To remove the glass shelves carefully use a utility knife to loosen it from the silicone and reinstall them with silicone to hold them back in place.