



Service Truck Solutions

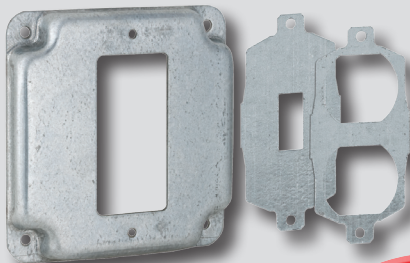


**Reduce SKU's and Save Time with
Innovative Products by**



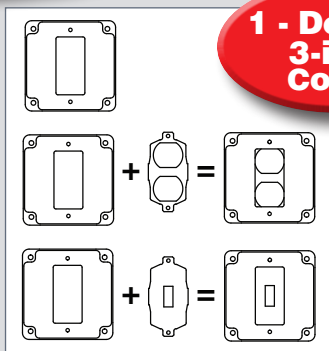


Universal Exp



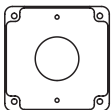
Catalog No.
808U

**1 - Device:
3-in-1
Cover**

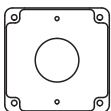


Catalog No.
811U

**Single
Round Device:
3-in-1
Cover**



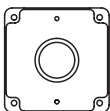
1.709" Dia. Hole



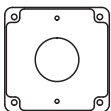
+



=



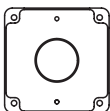
1.405" Dia. Hole



+

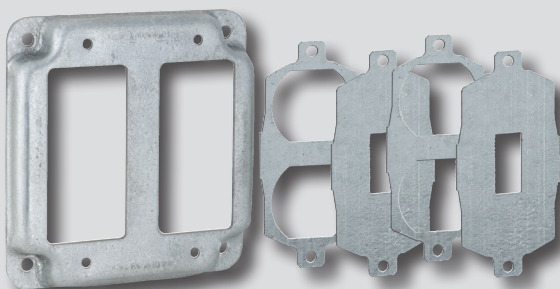


=



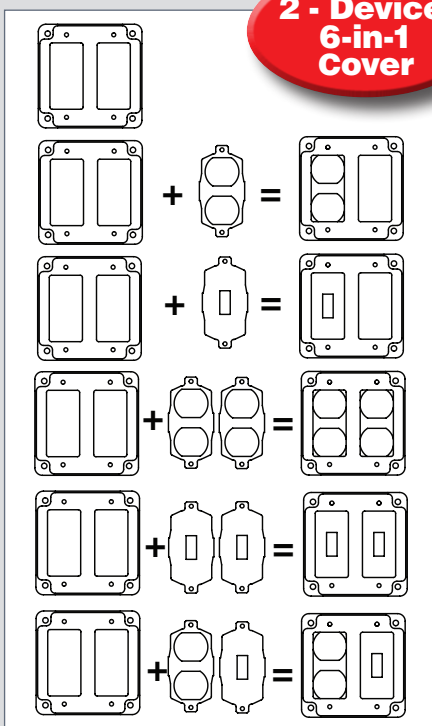
1.620" Dia. Hole

Exposed Work Covers



Catalog No. 809U

**2 - Device:
6-in-1
Cover**



Features

- Adapter plates are included, which provide flexibility during cover installation
- For GFCI, Duplex, Toggle Switch or Round Devices
- Ideal for service trucks
- RACO exposed work covers include required hardware for mounting the device(s)
- Made in USA



RETRO-RING®

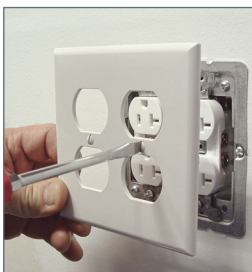
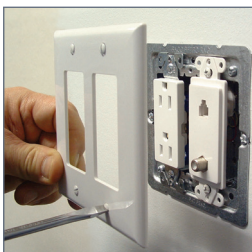


Catalog No.
232-0W

**1 OR 2
Devices**



Catalog No.
206RAC



Features

- RACO® 206RAC is used in old work installations where one or two devices are required; with or without box for low voltage applications
- RACO® 2320W is designed to position a 4" square junction box at any point in an existing wall. No stud support required
- Allows 4" square box to be quickly and easily mounted in old work application
- One or two devices mount directly to RETRO-RING
- Includes one template per carton for easy trace-&-cut-out



U•CONDUIT

10-IN-1 UNIVERSAL CONDUIT BODY for RIGID/IMC or EMT

*Configures to all standard
bodies (LB, LR, LL, T, C)*

*Space Saver!
& Trip Saver!*



UCB050 - 1/2"

UCB075 - 3/4"

UCB0100 - 1"

- Suitable for weatherproof installs
- Use set screws for EMT conduit, and threaded hubs for threaded Rigid/IMC conduit or fittings
- Lightweight, Durable TAYMAC TUFF Die Cast Aluminum Construction
- Seamless pre-affixed gasket and self-aligning covers/panels
- More wiring capacity than standard bodies and meets 2014 NEC 314.16(C)(2) for volume marking
- Captive screws with attached O-ring for ease of use and a weatherproof seal
- Includes 4 steel reducer bushings in the 1" size – (2) 1" to 3/4", (2) 1" to 1/2"; and (2) 3/4" to 1/2" bushings in the 3/4" size
- Not suitable for use in hazardous location applications
- Includes (1) body, (3) blank covers/panels, (1) T panel, (1) LL/LB/LR panel, reducer bushings, (1) closure plug and extra hardware



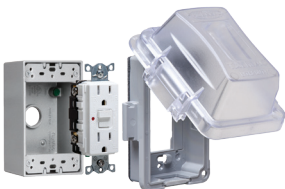
TayMac®



CODEGUARD™

MKG420CS

- High quality Hubbell WRTR GFCI included
- Lockable tab for full-size padlock
- Horizontal or vertical mount
- Three 1/2" threaded hub weatherproof box



MG420CS

- High quality Hubbell WRTR GFCI included
- Lockable tab for full-size padlock
- Horizontal or vertical mount



MM420C

- Lockable tab for full-size padlock
- Horizontal or vertical mount



ML500G

- Expands from 1" to 3" for while-in-use needs
- Horizontal or vertical mount
- Can be used as flip cover and an NEC compliant WIU cover



16ⁱⁿ1

CONFIGURATIONS



GFCI 1-1/4" Duplex 1-3/8" 1-9/16" Switch 1-3/4" 5 Rounds 2-1/8"



Meets 2014 NEC



MX1050S

- Horizontal or vertical mount
- Lockable tab

12ⁱⁿ1

CONFIGURATIONS

