

Dimmer

MACL-153M
120 V ~ 60 Hz

150 W CFL/LED
600 W Incand./Hal.

P/N 0301771 REV A

If using CFL or LED bulbs, they must be Lutron compatible!

www.lutron.com/macl

- For the compatible bulb list...
- Helpful videos...
- Advanced programming & operation...
- Additional wiring scenarios...
- Replacing a dimmer with a dimmer... or
- If you have three or more switches controlling a light...

www.lutron.com/macl

Help

U.S.A. | Canada | Caribbean
1.800.523.9466

Mexico
+1.888.235.2910

Others
+1.610.282.3800

Fax
+1.610.282.6311

www.lutron.com/macl

Limited Warranty:
www.lutron.com/TechnicalDocumentLibrary/
369-119_Wallbox_Warranty.pdf

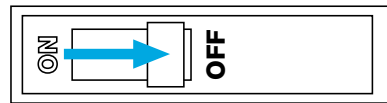
©2013-2015 Lutron Electronics Co., Inc.
Lutron, Lutron, Claro, Satin Colors, Maestro, and C•L are registered trademarks of Lutron Electronics Co., Inc.



1 Determine wiring type

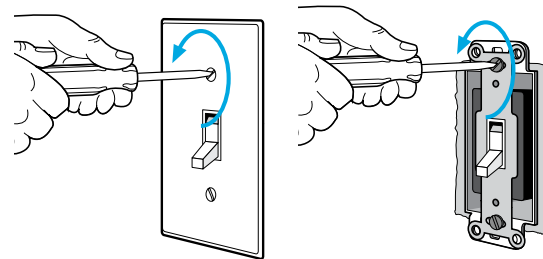
For lights switched from two locations, see instructions on the reverse side.
For lights switched from one location, proceed to Step 2 below.

2 Turn power OFF at circuit breaker!

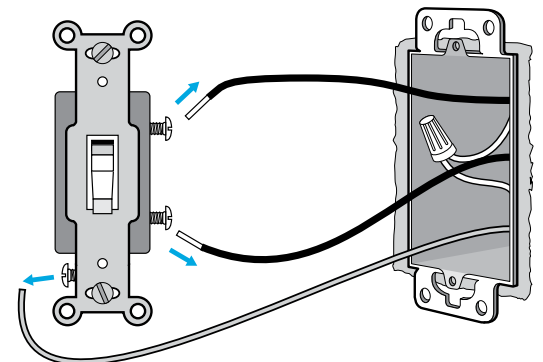


WARNING: SHOCK HAZARD. May result in serious injury or death. Turn off power at circuit breaker or fuse before installing.

3 Remove existing device

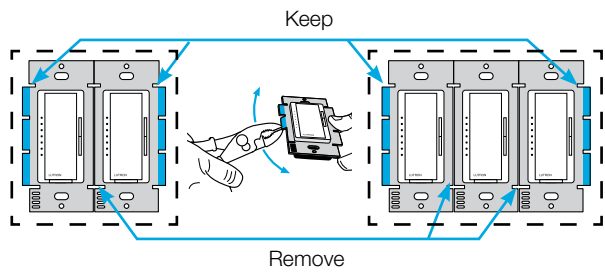


Disconnect wires.



4 Remove middle sections (if ganging devices)

Remove middle sections if mounting 2 or more devices side by side. See Maximum Ratings chart for the new wattage limits.
NOTE: No derating is required when using only CFLs or LEDs.

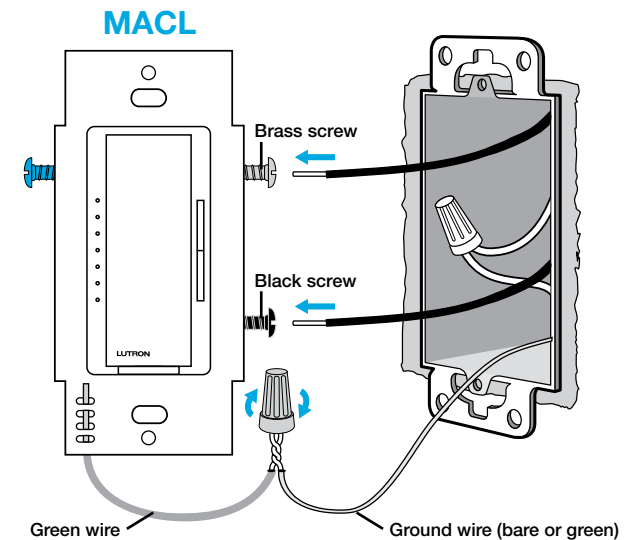
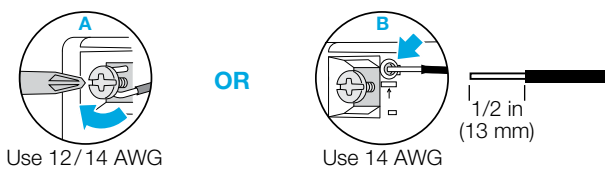


MAXIMUM RATINGS FOR MIXED LOAD TYPES

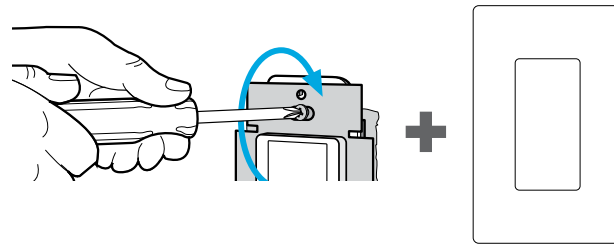
	LED	CFL	Incandescent/Halogen
0 W +	600 W	500 W	400 W
1 W – 25 W +	500 W	400 W	300 W
26 W – 50 W +	400 W	300 W	200 W
51 W – 75 W +	300 W	200 W	100 W
76 W – 100 W +	200 W	100 W	50 W
101 W – 125 W +	100 W	50 W	0 W
126 W – 150 W +	0 W	0 W	0 W

5 Connect the new dimmer (MACL)

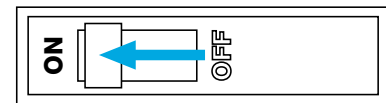
Fully wrap the wires around the screw and tighten (A), or strip insulated wires to 1/2 in (13 mm) and insert into the push-in terminals (B).



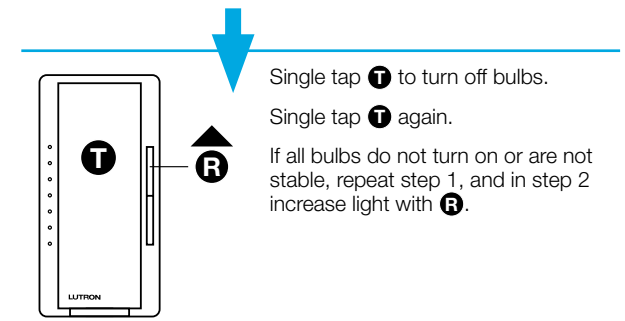
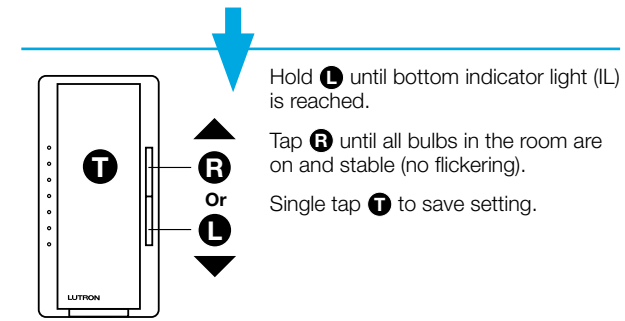
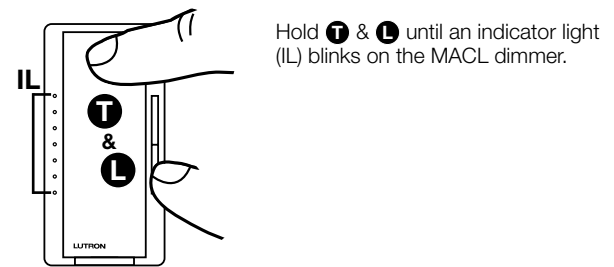
6 Mount dimmer using the provided screws



7 Turn power ON at circuit breaker

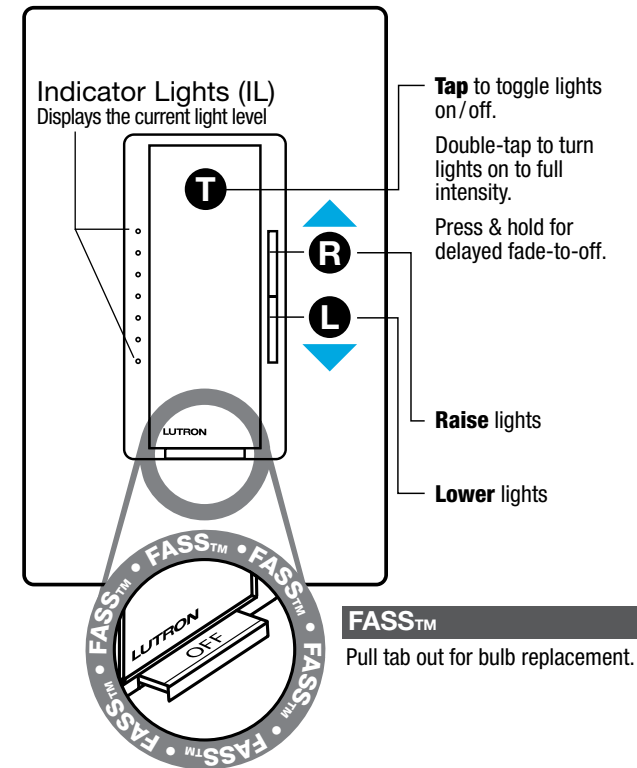


8 Adjust dimming range for LEDs and CFLs



If your bulbs are flickering, buzzing or dropping out, your bulbs may not be compatible. Please visit www.lutron.com/macl to check the Compatible Bulb List.

OPERATION

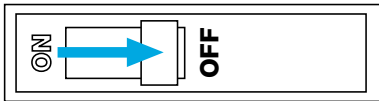


IMPORTANT

- CAUTION: Use only with permanently installed fixtures with dimmable screw-in compact fluorescent, dimmable screw-in LED, halogen, or incandescent lamps. To avoid overheating and possible damage to other equipment, do not use to control receptacles, motor-driven appliances, or low-voltage transformer-supplied appliances.
- Install in accordance with all national and local electrical codes.
- When no "grounding means" exists in wallbox, the 2011 National Electrical Code® (NEC®) allows a control to be installed as a replacement if 1) a nonmetallic, noncombustible faceplate is used with non-metallic attachment screws or 2) the circuit is protected by a ground fault circuit interrupter (GFCI). When installing a control according to these methods, cap or remove green wire before screwing control into wallbox and use an appropriate faceplate such as Claro® or Satin Colors® series wallplates by Lutron.
- 3-way wiring must use only one Maestro® C•L® Dimmer and a Maestro® Companion Dimmer (MA-R, MSC-AD) or an existing switch. 4-way wiring must use only one Maestro® C•L® Dimmer and up to 9 Maestro® Companion Dimmers (MA-R, MSC-AD).
- For indoor use only between 32 °F and 104 °F (0 °C and 40 °C).
- Maestro® C•L® Dimmers may feel warm to the touch during normal operation.
- Maximum wire length between the Master Dimmer and the last Companion Dimmer (MA-R, MSC-AD) is 150 ft (46 m).
- Clean dimmers with a soft damp cloth only. Do not use any chemical cleaners.

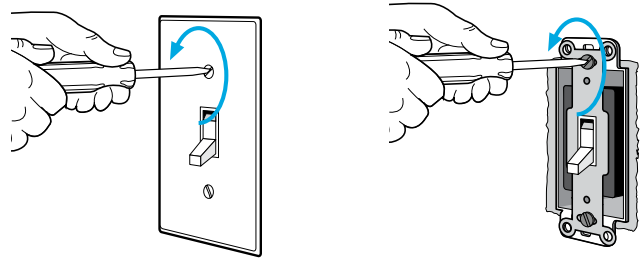
For lights switched from two locations (For lights switched from three or more locations, please visit www.lutron.com/macl)

1 Turn power OFF at circuit breaker!



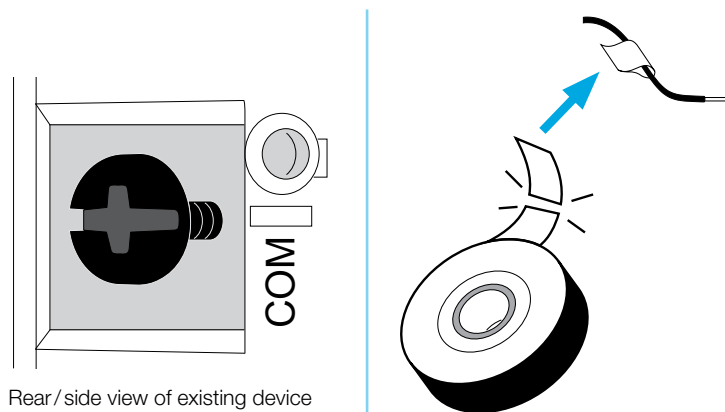
WARNING: SHOCK HAZARD.
May result in serious injury or death. Turn off power at circuit breaker or fuse before installing.

2 Remove (but do not disconnect) existing devices



3 Mark wire on the COMMON terminal

On both existing devices, mark the wire (for example, using electrical tape) that is connected to the screw that is a different color (typically black) than all the others. This screw terminal may also be labeled "COMMON" or "COM".
Does not include the ground screw.



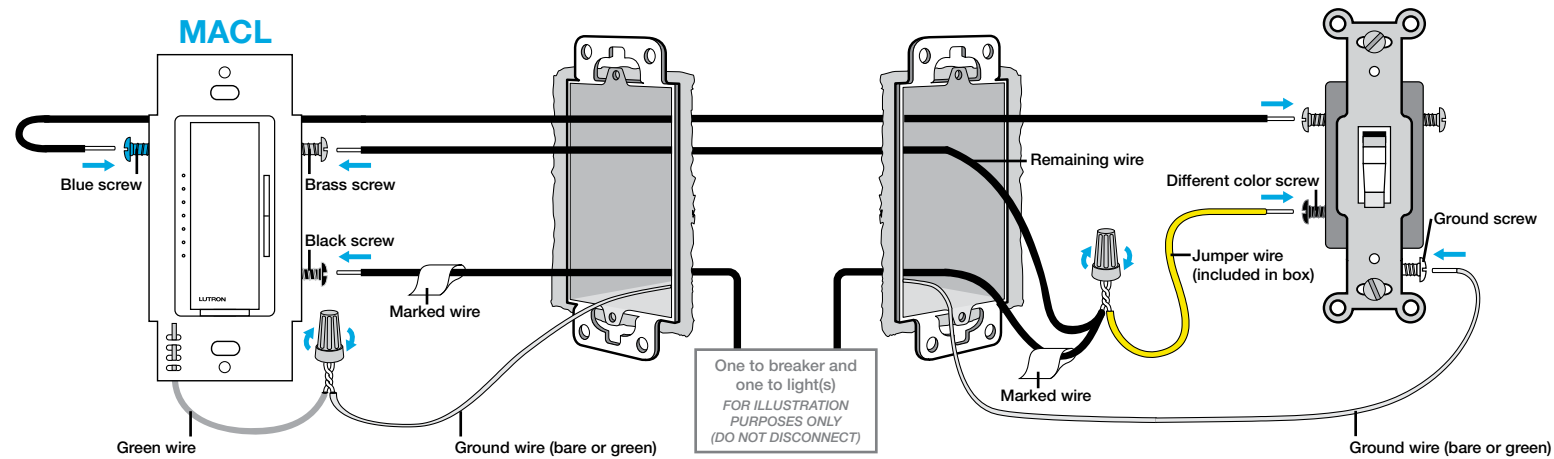
4 Disconnect wires

5 Remove middle sections (if ganging devices)

See Step 3 on reverse for details.

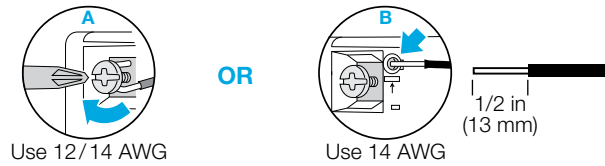
Choose one of the two wiring scenarios shown below (6a or 6b):

6a Connect the new MASTER dimmer (MACL) and re-wire OTHER EXISTING switch



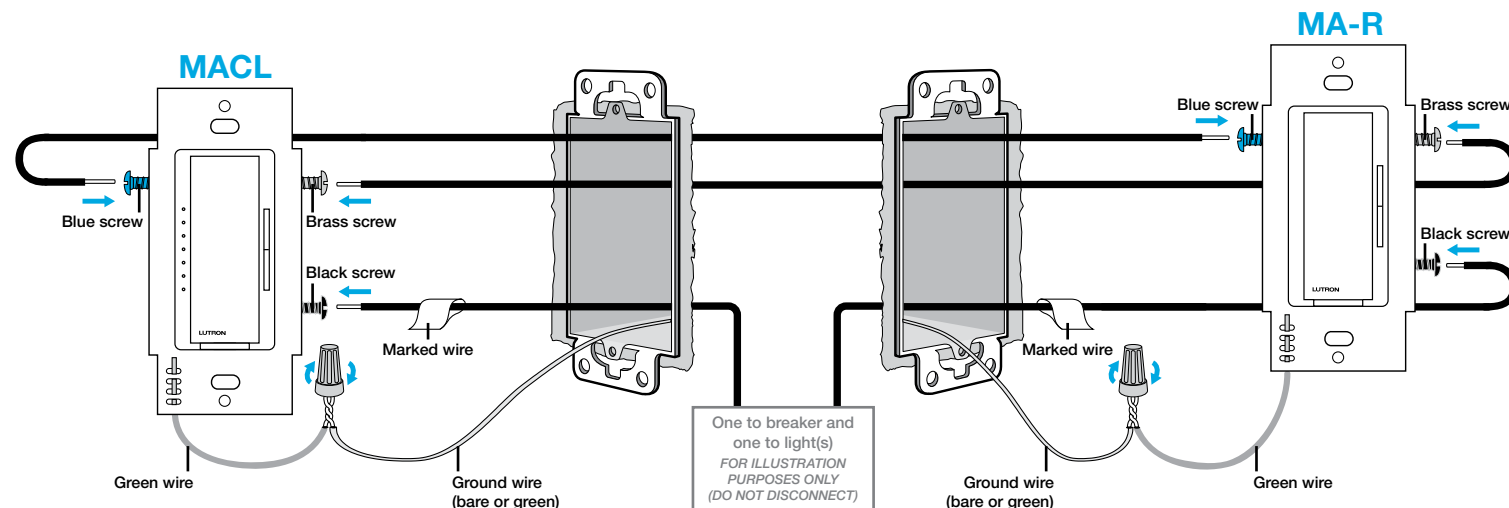
You MUST perform Step 9 (at right) for dimmer to work correctly.

Fully wrap the wires around the screw and tighten (A), or strip insulated wires to 1/2 in (13 mm) and insert into the push-in terminals (B).

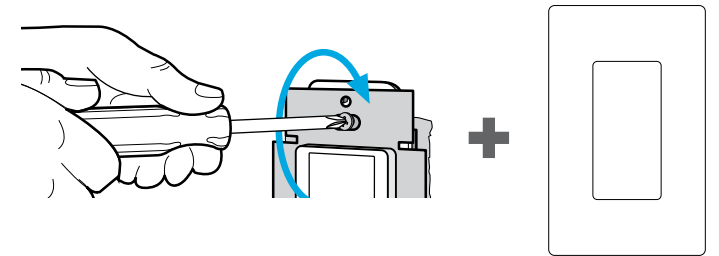


OR

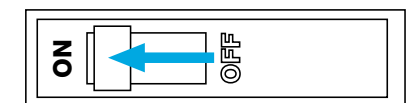
6b Connect the new MASTER dimmer (MACL) and a Maestro® COMPANION dimmer (MA-R, MSC-AD)



7 Mount all devices using the provided screws

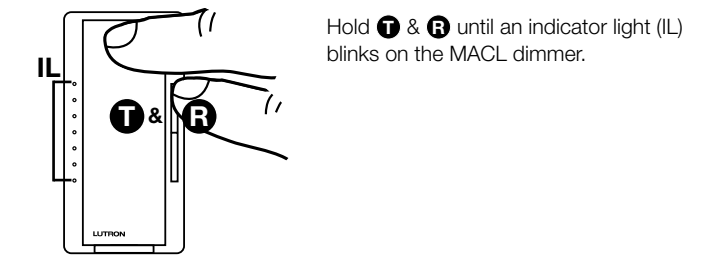


8 Turn power ON at circuit breaker

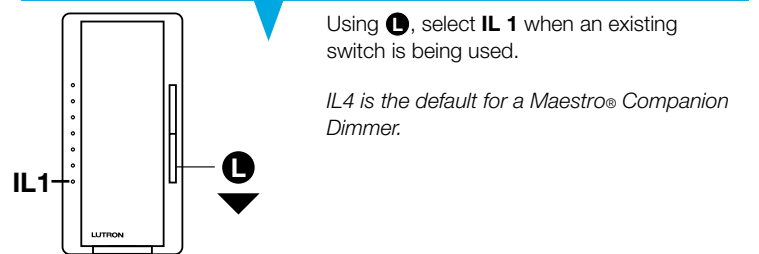


9 Program MASTER dimmer for use with existing switch

SKIP THIS STEP IF YOU ARE USING A MAESTRO® COMPANION DIMMER

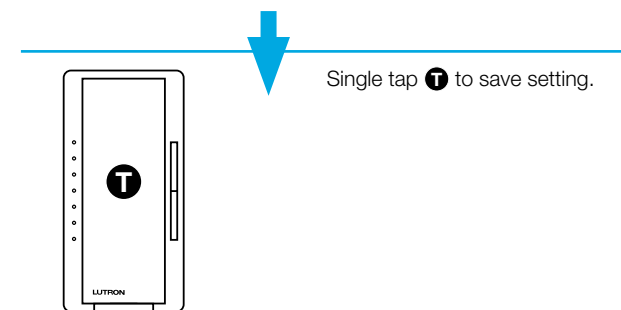


Hold **T** & **R** until an indicator light (IL) blinks on the MACL dimmer.



Using **L**, select **IL 1** when an existing switch is being used.

IL4 is the default for a Maestro® Companion Dimmer.



Single tap **T** to save setting.

OPTIONAL FOR INCANDESCENT/HALOGEN

10 Adjust dimming range for LEDs and CFLs

See Step 8 on reverse for details.