

Ventilation Solutions

Bathrooms



We give you choices

Designing a bath involves many decisions that will ultimately affect its look and function, whether it be a busy family bathroom or a small guest bath with limited space. Or, maybe, you're going all out for that ultra-modern bath retreat with all the amenities.

No matter what style bath you're designing, one thing remains the same - the need for proper ventilation.

And who better to offer you the perfect ventilation solution than Fantech®? For more than two decades our quiet ventilating fans have protected bathrooms from the damaging effects of mold and mildew without disturbing your peace and quiet.

Fantech Premium Bath

- Unobtrusive, quiet and efficient
- Superior CFM at higher static pressure
- Rated for continuous duty
- 100% speed controllable
- For use with recommended FIDT flexible
- 7 year warranty



Fans

duct

No Sones



This symbol identifies the notable lack of audible fan noise compared to even the lowest Sone surface mount solutions on the market*. We are proud to offer our customers a smarter, quieter way to ventilate one or multiple bathrooms.

Energy-Saving Fans

Fantech is proud partner with ENERGY STAR® to provide energy efficient bath ventilation products for your home.

- Use 70% less energy than conventional models
- Compatible with controls for more savings



* No standard for testing of remote mount bath fans exists.

RC 6
Roof Cap

Roof cap with damper flap closure, duct connection and screened exhaust opening.
Learn more on page 15.

PB 270L10-2

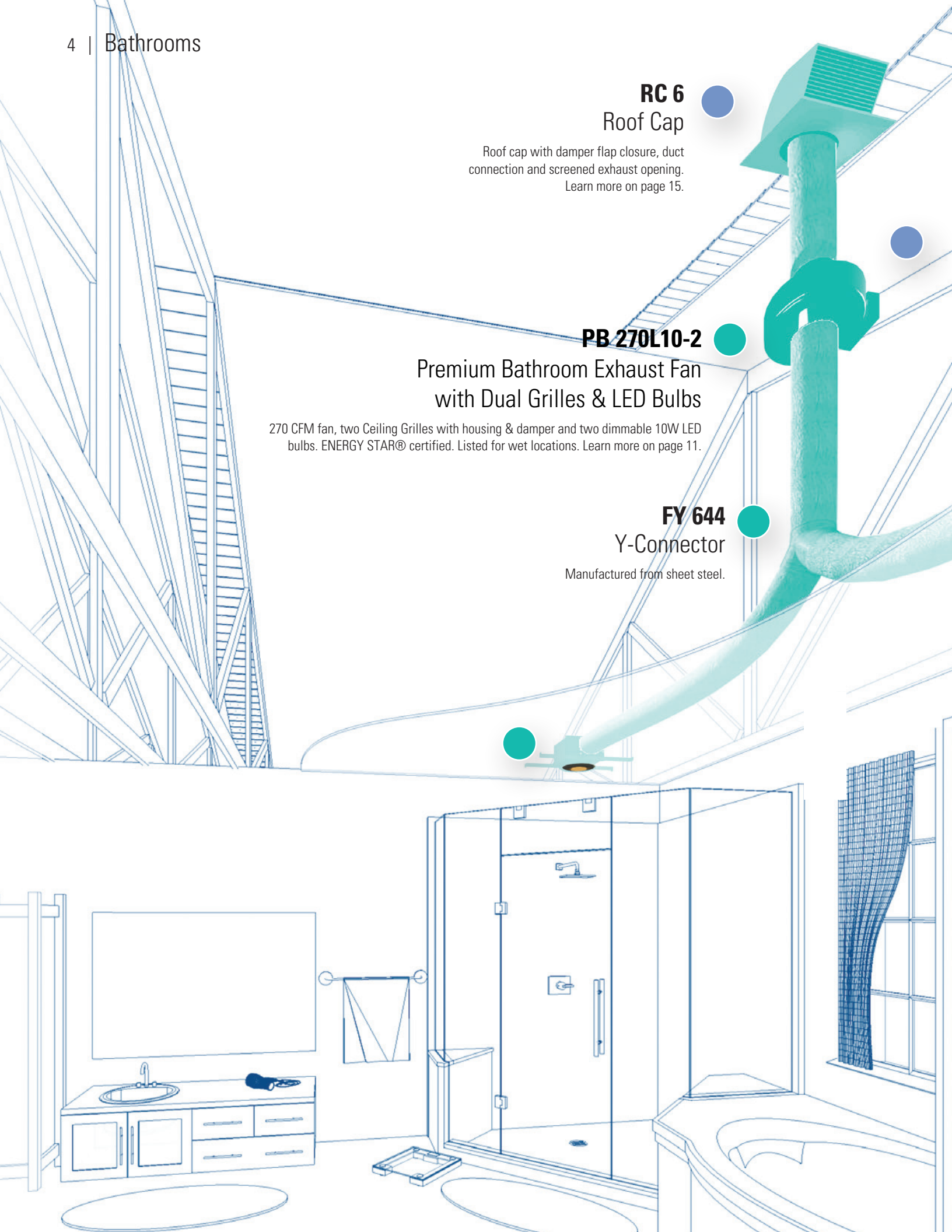
Premium Bathroom Exhaust Fan
with Dual Grilles & LED Bulbs

270 CFM fan, two Ceiling Grilles with housing & damper and two dimmable 10W LED bulbs. ENERGY STAR® certified. Listed for wet locations. Learn more on page 11.

FY 644

Y-Connector

Manufactured from sheet steel.



FC 6
Mounting Clamps

Manufactured from sheet steel.



Part of a Premium Bath Fan kit



Recommended accessories

FIDT 4
Flexible Duct

Flexible round insulated duct. The insulation provides great sound and thermal efficiency. UL Listed. Available in 25-foot lengths. Learn more on page 15.



Myth vs Reality

Myth:

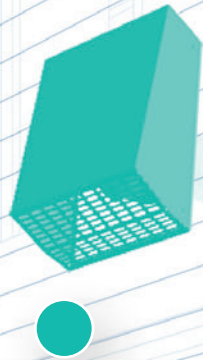
Remote mount fans are more expensive

Powerful and silent remote mount bath fan solutions from Fantech are more economical than you may think. The table below illustrates an average installed cost for two fans mounted in a master bath or in adjacent bathrooms. Top it off with an unbeatable 7 year warranty, and the competition is left far behind.

Listed costs verified by using 2015 National Construction Estimator.

Equipment / Labor	Comparable 110CFM Ceiling Mount Fan*				Premium Bath Fan by Fantech			
	Materials	Quantity pc	Cost \$/ ea	Total \$	Materials	Quantity pc	Cost \$/ ea	Total \$
Main Bathroom	Comparable 110CFM Ceiling Mount Fan	1 pc	180.-	180.-	PB 270L10-2 Remote Mount Bath Fan (270 CFM)	1 pc	215.-	215.-
Master Bathroom	Comparable 110CFM Ceiling Mount Fan	1 pc	180.-	180.-	Second Location FREE	1 pc	-	-
Controls	Std On/Off Toggle Switches	2 pcs	5.-	10.-	Std On/Off Toggle Switches	2 pcs	5.-	10.-
Ducts	12 ft. 6" insulated ducts	1 pc	40.-	40.-	6" Flex + 4" Flex	1 pc	40.-	40.-
Roof Caps	6" roof cap	2 pcs	30.-	60.-	6" roof cap	1 pc	30.-	30.-
Electrical Labor	Wiring fan	2 hrs	55.-	110.-	Wiring fan	1 hr	55.-	55.-
Ducting labor	Mount grille box	2 pcs	38.-	76.-	Mount grille box	2 pcs	38.-	76.-
	Mount duct & roof cap	2 pcs	90.-	180.-	Mount duct & roof cap	1 pc	90.-	90.-
Installation Cost				\$ 836.-				\$ 516.-

* Based on internet retail cost of Panasonic FV-11VOL6



PBW 110L7 Exterior Wall Mount Bath Fan with one Grille & LED Light

120 CFM fan, one Ceiling Grille with housing & damper and a dimmable 7W LED bulb. UL Listed for wet locations. Learn more on page 13.

Remote mounted bath exhaust for 1st floor bathrooms

Because there are often finished levels above, 1st floor bathrooms can be a challenge to ventilate with vertically routed duct work. When duct work is routed horizontally between two levels of the home, it can be difficult to locate a remote-mounted fan indoors. No need to worry - Fantech has a solution!

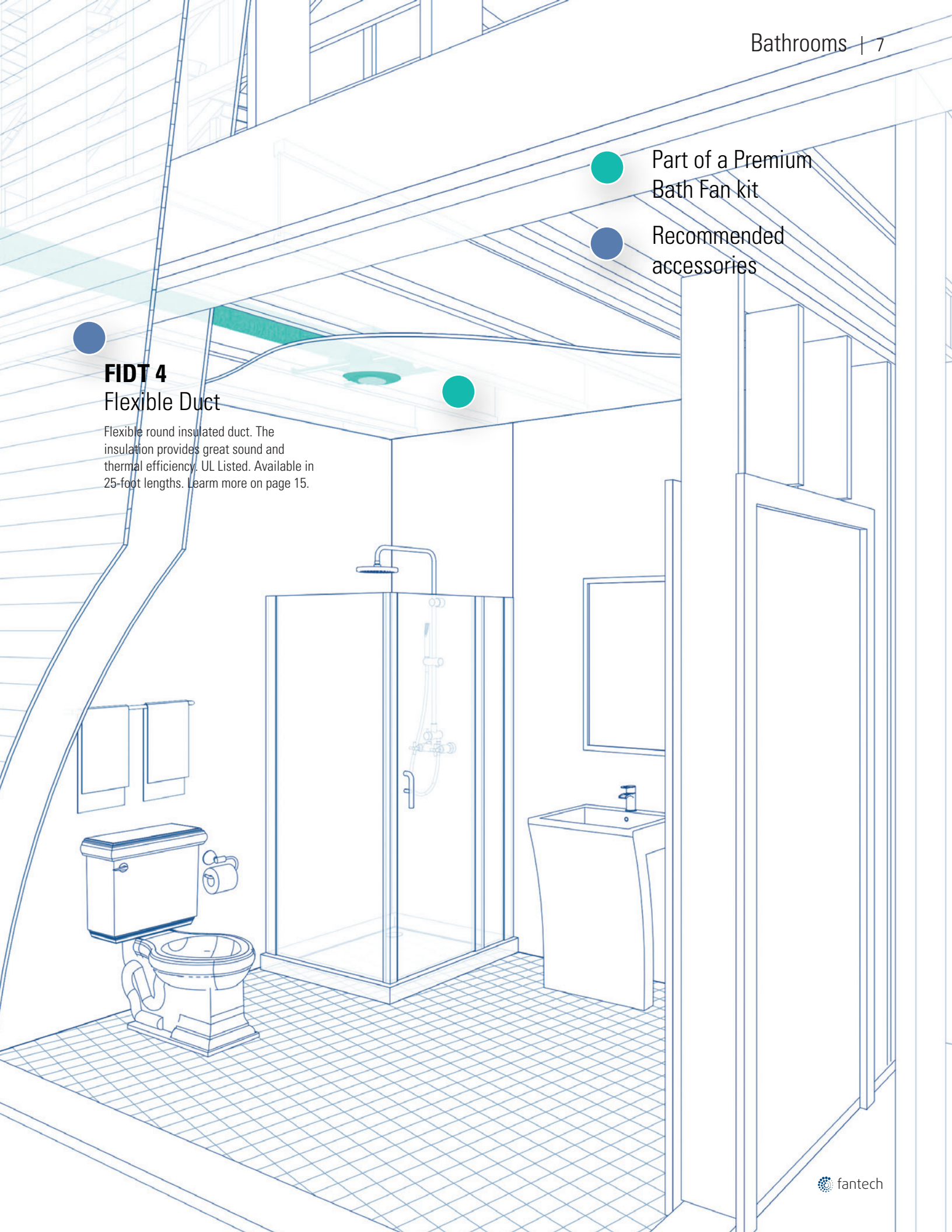
With the PBW series of exterior, wall-mount premium bath fans, even 1st floor bathrooms can be provided with the benefits of remote-mounted fans. The PBW series features a fan that mounts on the exterior wall. The fan's natural sound is kept at a distance from the ceiling grille, resulting in a very quiet operation. Similar to the other premium bath fan products, PBW models include ceiling grilles with and without lights.

● Part of a Premium Bath Fan kit

● Recommended accessories

FIDT 4
Flexible Duct

Flexible round insulated duct. The insulation provides great sound and thermal efficiency. UL Listed. Available in 25-foot lengths. Learn more on page 15.



It isn't just a bright idea.
It's a no-brainer!

If you haven't already made the switch to LEDs yet, here is the perfect opportunity. The industry's best bathroom ventilation fan now offers a dimmable LED light that delivers exceptionally long life and significant energy savings.



The LED bulb contains diffuser lenses and reflectors to disperse the light more like a halogen bulb, while maintaining greater light output. The LED light uses only 7W and lasts 8 times longer than a standard 50W halogen bulb.

PB 110L10 Premium Bath Fan
with a Dimmable 10W LED Light

Flip the page to learn more.



Who would think that such a small thing like a vent with the light installed directly over the shower head would create a growing revolution in bathrooms? Well, they have.

Unlike competitive products, all of Fantech's PB and PBW models are UL listed for installation in wet locations and provide an unobtrusive and effective way to exhaust the steam and humidity from your bathroom. Find out more on the pages to follow.

PB Series

Premium Bath Fans • Single Grilles

Clear the air in smaller baths and powder rooms

A small-scale grille mounts in the ceiling while the fan motor mounts in a remote location away from the living area. The result is a quiet yet powerful combination designed to help protect your home from the damaging effects of humidity. PB fans are designed for intermittent or continuous operation to meet **ASHRAE Standard 62.2**.

PB 110 (PB 190) Premium Bath Fan with one Ceiling Grille



110 CFM (190 CFM) fan, one ceiling grille, a grille housing with a damper. Uses 4" (6") duct. ENERGY STAR® qualified. UL Listed for wet locations.

PB 110L7 Premium Bath Fan with a Dimmable 7W LED Light



110 CFM fan, one ceiling grille with LED light, grille housing with a damper, dimmable 7W LED bulb. Uses 4" duct. ENERGY STAR® qualified. UL Listed for wet locations.

PB 110H Premium Bath Fan with a Dimmable 50W Halogen Light



110 CFM fan, one ceiling grille with light, grille housing with a damper, dimmable 50W halogen bulb. Uses 4" duct. UL Listed for wet locations.

PB 110L10 Premium Bath Fan with a Dimmable 10W LED Light



110 CFM fan, one ceiling grille with LED light, grille housing with a damper, dimmable 10W LED bulb. Uses 4" duct. ENERGY STAR® qualified. UL Listed for wet locations.

PB Series

Premium Bath Fans • Dual Grilles

The key for clean oversized baths is spot ventilation

Dual grille Premium Bath fans can effectively ventilate two areas of the bath or two different bathrooms. Small 7" ceiling grilles (with or without lights) can be easily positioned directly over showers, whirlpool tubs, steam showers, toilet or vanity. The fan motor is installed away from the living area for super quiet operation. PB fans are designed for intermittent or continuous operation to meet **ASHRAE Standard 62.2**.

PB 270-2 (PB 370-2) Premium Bath Fan with Dual Grille



270 CFM (370 CFM) fan, two ceiling grilles, two grille housings with dampers and 4"x4"x6" (6"x6"x6") Y-adapter. Uses 4", 6" ducts. ENERGY STAR® qualified. UL Listed for wet locations.

PB 270L7-2 Premium Bath Fan with Dual Grille and a Dimmable 7W LED Light



270 CFM fan, two ceiling grilles with LED lights, two grille housings with dampers, two dimmable 7W LED bulbs and 4"x 4"x 6" Y-adapter. Uses 4", 6" ducts. ENERGY STAR® qualified. UL Listed for wet locations.

PB 270H-2 Premium Bath Fan with Dual Grilles and a Dimmable 50W Halogen Light



270 CFM fan, two ceiling grilles with lights, two grille housings with dampers, two dimmable 50W halogen bulbs & Y-adapter (4" x 4" x 6"). Uses 4" and 6" ducts. UL Listed for wet locations.

PB 270L10-2 Premium Bath Fan with Dual Grille and a Dimmable 10W LED Light



270 CFM fan, two ceiling grilles with LED lights, two grille housings with dampers, two dimmable 10W LED bulbs and 4" x 4" x 6" Y-adapter. Uses 4", 6" ducts. ENERGY STAR® qualified. UL Listed for wet locations.

PB Series

Combination Premium Bath Fans • Dual Grilles

Multiple options, same great performance

Combo units include one exhaust fan with one lit and one unlit ceiling grille. A single model number provides the exact bath fan components needed for a dual location exhaust system. PB fans are designed for intermittent or continuous operation to meet **ASHRAE Standard 62.2**.

PB 270HV-2 Premium Bath Fan

with one Ceiling Grille and Halogen Light



270 CFM fan, one ceiling grille with light, one vent-only ceiling grille, two grille housings w/dampers, dimmable 50W Halogen bulb and 4"x4"x6" Y-adapter. Uses 4", 6" ducts. UL Listed for wet locations.

PB 270L7V-2 Premium Bath Fan

with a Dimmable 7W LED Light and one Vent-Only Ceiling Grille



270 CFM fan, one ceiling grille with light, one vent-only ceiling grille, two grille housings w/dampers, dimmable 7W LED bulbs and 4"x4"x6" Y-adapter. Uses 4", 6" ducts. ENERGY STAR®. UL Listed for wet locations.

PB 270L10V-2 Premium Bath Fan

with a 10W Dimmable LED Light and one Vent-Only Ceiling Grille



270 CFM fan, one ceiling grille with light, one vent-only ceiling grille, two grille housings w/dampers, dimmable 10W LED bulbs and 4"x4"x6" Y-adapter. Uses 4", 6" ducts. ENERGY STAR®. UL Listed for wet locations.

PB 270L710-2 Premium Bath Fan

with one each 7W and 10W Dimmable LED Lights



270 CFM fan, two ceiling grilles with LED lights and dampers, one 7W and one 10W dimmable LED bulbs and 4"x4"x6" Y-adapter. Uses 4", 6" ducts. ENERGY STAR® qualified. UL Listed for wet locations.

PBW Series

Exterior Mount Bath Fans

No where to exhaust a fan?

We have expanded our Premium Bath Fan selection to include a quartet of models powered by exterior mounted wall fans. An excellent alternative when space is an issue or direct venting vertically is impossible. Ideal for homes, condominiums and apartment complexes. Choose lit or unlit models. PB fans are designed for intermittent or continuous operation to meet **ASHRAE Standard 62.2**.

PBW 110 Exterior Wall Mount Bath Fan with one Ceiling Grille



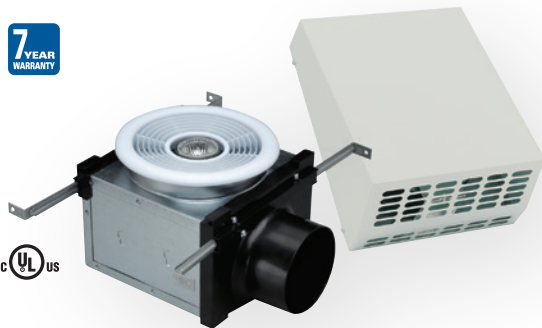
120 CFM fan, one ceiling grille and grille housing with damper. UL Listed for wet locations.

PBW 110L7 Exterior Wall Mount Bath Fan with a Dimmable 7W LED Light



120 CFM fan, one Ceiling Grille with housing & damper and a dimmable 7W LED bulb. UL Listed for wet locations.

PBW 110H Exterior Wall Mount Bath Fan with a Dimmable Halogen Light



120 CFM fan, one Ceiling Grille with Light, grille housing with damper and a 50W dimmable halogen bulb. UL Listed for wet locations.

PBW 110L10 Exterior Wall Mount Bath Fan with a Dimmable 10W LED Light



120 CFM fan, one Ceiling Grille with housing & damper and a dimmable 10W LED bulb. UL Listed for wet locations.

Selection Guide

Premium Bath Fans • Quiet Ventilating Fans

Premium Bath Fans with Ceiling Grilles

Model	Duct size	Power @ 0.2" P _s	Voltage / phase	0.2" P _s	0.4" P _s	CFM per Watt @ 0.2" P _s	ENERGY STAR® Qualified	Lamp	Fan Dimensions		Shipping weight	Item #	7 Year Warranty
	inch	W	V / ~	cfm					W (inch)	inch (H)	lbs		
PB 110	4	21	120 / 1	110	83	5.3	Yes	-	8 3/4	6 1/2	9	40568	Yes
PBW 110	4	19	120 / 1	112	83	5.9	-	-	10 1/4	13	12	412256	Yes
PB 190	6	69	120 / 1	200	152	2.9	Yes	-	11 3/4	6	14	40571	Yes
PB 270-2	4/6	74	120 / 1	270	232	3.7	Yes	-	11 3/4	6	17	40572	Yes
PB 370-2	6	122	120 / 1	370	317	3.0	Yes	-	13 1/8	6 5/8	21	45433	Yes

Premium Bath Fans with Ceiling Grilles and LED Lights

Model	Duct size	Power @ 0.2" P _s	Voltage / phase	0.2" P _s	0.4" P _s	CFM / Watt @ 0.2" P _s	ENERGY STAR® Qualified	Lamp	Fan Dimensions		Shipping weight	Item #	7 Year Warranty
	inch	W	V / ~	cfm					inch (W)	inch (H)	lbs		
PB 110L7	4	23	120 / 1	110	79	4.8	Yes	7W Dimmable LED	8 3/4	6 1/2	10	44942	Yes
PB 110L10	4	23	120 / 1	110	79	4.8	Yes	10W Dimmable LED	8 3/4	6 1/2	10	44943	Yes
PBW 110L7	4	19	120 / 1	112	83	5.9	-	7W Dimmable LED	10 1/4	13	12	44949	Yes
PBW 110L10	4	19	120 / 1	112	83	5.9	-	10W Dimmable LED	10 1/4	13	12	44950	Yes
PB 270L7-2	4/6	67	120 / 1	260	229	3.9	Yes	7W Dimmable LED	11 3/4	6	18	44944	Yes
PB 270L10-2	4/6	67	120 / 1	260	229	3.9	Yes	10W Dimmable LED	11 3/4	6	18	44945	Yes
PB 270L7V-2	4/6	67	120 / 1	260	229	3.9	Yes	7W Dimmable LED	11 3/4	6	18	44946	Yes
PB 270L10V-2	4/6	67	120 / 1	260	229	3.9	Yes	10W Dimmable LED	11 3/4	6	18	44947	Yes
PB 270L710-2	4/6	67	120 / 1	260	229	3.9	Yes	7W & 10W Dim. LED	11 3/4	6	18	44948	Yes

Premium Bath Fans with Ceiling Grilles and Halogen Lights

Model	Duct size	Power @ 0.2" P _s	Voltage / phase	0.2" P _s	0.4" P _s	CFM / Watt @ 0.2" P _s	ENERGY STAR® Qualified	Lamp	Fan Dimensions		Shipping weight	Item #	7 Year Warranty
	inch	W	V / ~	cfm					inch (W)	inch (H)	lbs		
PB 110H	4	23	120 / 1	110	79	4.8	-	50W Halogen	8 3/4	6 1/2	10	40570	Yes
PBW 110H	4	18	120 / 1	120	112	6.6	-	50W Halogen	10 1/4	13	12	412257	Yes
PB 270H-2	4/6	78	120 / 1	270	233	3.5	-	50W Halogen	11 3/4	6	17	40574	Yes
PB 270H-2	4/6	78	120 / 1	270	233	3.5	-	50W Halogen	11 3/4	6	17	40574	Yes
PB 270HV-2	4/6	78	120 / 1	270	233	3.5	-	50W Halogen	11 3/4	6	18	40576	Yes

FQ Series – Quiet Ventilating Fans

Model	Duct size	Power @ 0.2" P _s	Voltage / phase	0.1" P _s	0.2" P _s	0.3" P _s	0.4" P _s	Lamp power (Main/Night)	ENERGY STAR® Qualified	Sones	Shipping weight	Item #	5 Year Warranty
	inch	W	V / ~	cfm				W CFL			lbs		
FQ80 / FQ100	4	25 / 30	120 / 1	80 / 110	68 / 100	56 / 85	43 / 70	-	Yes	<0.3 / 0.7	12 / 13	483737 / 483738	Yes
FQ80FL / 100FL	4	25 / 30	120 / 1	80 / 110	73 / 100	60 / 85	47 / 70	26/4	-	0.4 / 1.3	14 / 14	483739 / 483740	Yes

BFRK 100 – Bathroom Fan Retrofit Kit

Model	Duct size	Rated power @ 0.2" P _s	Voltage / phase	0.2" P _s	0.4" P _s	0.6" P _s	CFM / Watt @ 0.2" P _s	Fan Dimensions		ENERGY STAR® Qualified	Shipping weight	Item #	5 Year Warranty
	inch	W	V / ~	cfm				W (inch)	inch (H)		lbs		
BFRK 100	4	21	120 / 1	110	83	55	5.2	8 3/4	6 1/2	Yes	12	483737	Yes

Selection Guide

Expansion Grilles • Control • Appurtenances for Ducting

PBV 4 (PBV 6)

Ceiling Grille
Vent



Includes damper, four hanger bars. Fits between 2" x 6" construction. PBV 4 model for use with PB110 and PB270 Series. PBV 6 for use with PB 370 fan.

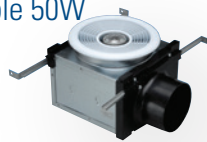
Housing dimensions (inch):

PBV4 (#412260)
7 ³/₁₆ x 7 ³/₁₆ x 5 ⁵/₁₆

PBV6 (#412261)
8 x 8 x 7 ¹/₈

PBH 4

Ceiling Grille with a
Dimmable 50W
Halogen
Light



Includes damper, four hanger bars and a dimmable 50W halogen bulb. Fits between 2" x 6" construction. For use with PB 110H, PB 270H-2 and PB 270HV-2 fans.

Housing dimensions (inch):

PBH4 (#412262)
7 ³/₁₆ x 7 ³/₁₆ x 5 ⁵/₁₆

PBL 7-4

Ceiling Grille with a
Dimmable 7W
LED Light



Includes damper, four hanger bars and a dimmable 7W LED bulb. Fits between 2" x 6" construction. For use with PB 110L7, PB 270L7-2, PB 270L7V-2 and PB 270L7-L10-2.

Housing dimensions (inch):

PBL7-4 (#44951)
7 ³/₁₆ x 7 ³/₁₆ x 5 ⁵/₁₆

PBH 10-4

Ceiling Grille with a
Dimmable 10W
LED Light



Includes damper, four hanger bars and a dimmable 10W LED bulb. Fits between 2" x 6" construction. For use with PB 110L10, PB 270L10-2, PB 270L10V-2 and PB 270L7-L10-2.

Housing dimensions (inch):

PBL10-4 (#44952)
7 ³/₁₆ x 7 ³/₁₆ x 5 ⁵/₁₆

FIDT Series Insulated Flex Duct*



Flexible round insulated duct. The insulation provides greater thermal efficiency to save energy. The product is also covered in a heavy duty, silver jacket for durability. UL listed. Available in 25-foot lengths.

FIDT 4 (#411061), 4", 7 lbs **FIDT 6** (#411062), 6", 9 lbs

VT 20M

20 min Bath Fan Control
for Intermittent or
Continuous Ventilation

Infinite Speed Control can be set so ventilation fan runs at any speed between 0-100% for 0-60 min. These controls are only for use with PB, PBW, and BFRK models.

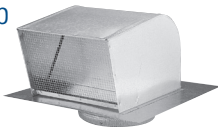
VT 20M (#45386), 2.5A, 1 lbs **VT 20A** (#45385), 2.5A, 1 lbs

VT 20A

Auxiliary Control



RC Series Roof Cap



Roof Cap with damper flap closure, duct connection and screened exhaust opening.

RC 4 (#411310), 4", 2 lbs
RC 6 (#411312), 6", 3 lbs

HS Series

Louvered
Shutter for
Exhaust



Plastic louvered shutter with duct connection. For exhaust air only. Used with premium bathroom fans or dryer exhaust.

HS 4W (#411072), 4", 1 lbs
HS 6W (#411052), 6", 1 lbs

FQ-FD

Fire
Radiation
Damper



UL 555C classified for use in 3-hour fire rated floor/ceiling or roof/ceiling assemblies for T-bar, hanger rod/wire ceiling installation. Only for use with un-lit FQ fan models.

FQ-FD (#46975), 2 lbs

FD 60EM

Electronic
Push Button
Timer



Provides convenient timed bath fan control: 10, 20, 30 and 60 minutes. Fits standard single gang box. Ideal for multiple switching locations. Three panel colors. 120V / 20A.

FD 60EM (#411386), 1 lbs

*We recommend to use of the insulated flex duct with our Premium Bathroom Fans.



Distributed Locally by:



Customer Support:

Canada
800.565.3548
CANADAsupport@fantech.net

USA
800.747.1762
USSupport@fantech.net



Send Orders:

Canada
877.747.8116
CANADAorders@fantech.net

USA
800.487.9915
USorders@fantech.net

Fantech reserves the right to modify, at any time and without notice, any or all of its products' features, designs, components and specifications to maintain their technological leadership position. The application rendering presented in this brochure is for visual presentation purposes only. Please, contact a building professional for technical guidance.

