



*Congratulations on your decision to purchase a Lifesmart spa.
Welcome to the growing family of Lifesmart spa owners.*



Pre-Delivery Guide

Please take the time to read this booklet carefully, as it will provide you with the information you will need to ensure the safe, secure, and timely installation of your new spa. The following sections are guidelines on how to prepare for delivery and set-up of your new spa. Specifically covered are site selection, delivery access, ground preparation, and electrical requirements.

Remember to carefully review the Owner's Manual that accompanies your spa, The Owner's Manual can be found in the Owner's Package.

Watkins Wellness™ reserves the right to change features, specifications and design without notification and without incurring any obligation.

DATE PURCHASED: _____

In most cities and counties, permits will be required for the installation of electrical circuits or the construction of exterior surfaces (decks and gazebos). In addition, some communities have adopted residential barrier codes which may require fencing and/or self-closing gates on the property to prevent unsupervised access to a pool (or spa) by children under 5 years of age. Your spa is equipped with a locking cover that meets the ASTM F1346-91 Standard for Safety Covers and as a result, is usually exempt from most barrier requirements. As a general practice, your local Building Department will inform you of any applicable barrier requirements at the time a permit is obtained for the installation of an electrical circuit. Your dealer can provide information on which permits may be required.

For Customer Service, please call (888) 961-7727

Delivery...

Your spa will be delivered at the end of your driveway. It is delivered on end, wrapped on a sturdy pallet for convenient placement. You will be responsible for any arrangements needed to have your spa placed in your desired location. When the freight company calls to set up a delivery appointment, you may inquire if they are able to assist. There may be an additional fee that you need to work out with the freight company.

(For example, cranes are not considered "normal delivery"). If that is not a service they can provide, Customer Service may be able to recommend consulting professionals who have experience moving large items.

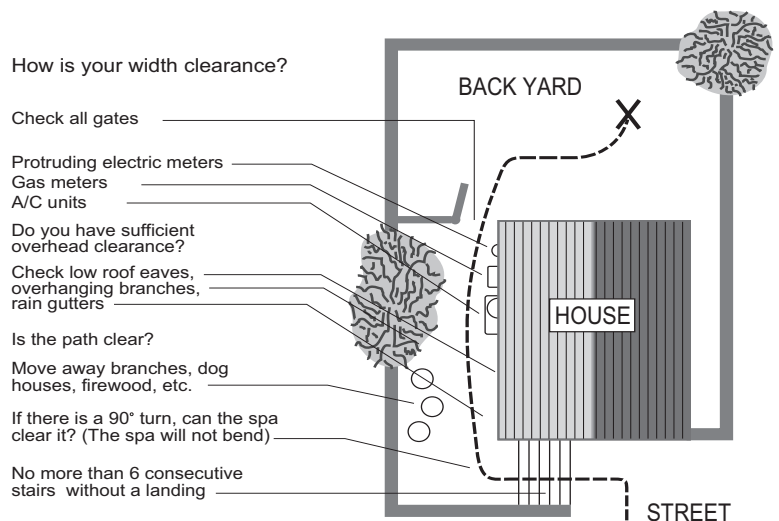
Your spa will be delivered in approximately 2 - 4 weeks from the date of order. If you are unable to accept delivery within this lead time, your spa order will be cancelled. Carriers are unable to hold and store your spa.

REVIEW THE ROUTE OF YOUR SPA DELIVERY:

Carefully review the route that the spa will take through your property. Make sure there is sufficient clearance.

Keep the overall dimensions in mind when your spa is wrapped on a pallet. You are able to remove the hot tub from the pallet and put a 4-wheel furniture dolly underneath it to move it. In this case you will need a 3 ft wide pathway that will accommodate an approximate 7' - 7½' height clearance - also keep in mind that it will be almost 7' long, so check for clearances when turning corners.

NOTE: The empty spa can weigh as much as 900 lbs., so choose the safest and most direct route possible. We recommend hiring professionals to avoid physical harm or property.



Spa Dimensions

Model	Filter Area	Seats	Length	Width	Height	Weight	Gallons	Electrical
LS100/LS100DX/Bermuda	50 ft ²	4	5'10"	5'1"	32"	270 lbs	205	110V
LS200/Key Largo	25 ft ²	4	6'5"	5'6"	29"	244 lbs	220	110V
LS300 Plus	50 ft ²	3	6'0"	6'0"	31"	405 lbs	260	110V
LS350/LS350DX/Bahama	50 ft ²	5	6'0"	6'9"	34"	351 lbs	315	110V
LS350 Plus	50 ft ²	5	6'0"	6'9"	34"	422 lbs	315	110V
LS400DX/Antigua	50 ft ²	5	6'3"	6'3"	34"	424 lbs	245	110V
LS450DX/Barbados HD	50 ft ²	7	6'9"	6'9"	34"	440 lbs	270	110V
LS500 Plus	50 ft ²	5	7'3"	6'5"	34"	423 lbs	290	110V
LS550 Plus	50 ft ²	5	7'3"	6'5"	34"	445 lbs	290	230V
LS600DX/Coronado	50 ft ²	7	6'8"	6'8"	34"	478 lbs	290	230V
LS700DX	50 ft ²	7	6'8"	6'8"	34"	582 lbs	285	230V

Spa Dimensions- Continue

Model	Filter Area	Seats	Length	Width	Height	Weight	Gallons	Electrical
Sereno	50 ft ²	4	6'3"	6'3"	34"	406 lbs	245	110V or 230 V
Fantasia	50 ft ²	4	6'9"	5'3"	33"	356 lbs	233	110V or 230 V
Tierra	50 ft ²	5	7'3"	6'5"	34"	426 lbs	327	230 V
Estrella L	50 ft ²	6	7'0"	7'0"	36"	796 lbs	330	230 V
Carino	50 ft ²	6	7'5"	7'5"	36"	893 lbs	400	230 V

Choose Your Location...

SAFETY FIRST:

Do not place the spa within 10 feet (3m) of overhead power lines. Make sure your spa is positioned so access to the equipment compartment and side panels will not be blocked. Be certain your installation will meet all city and local safety codes and requirements.

PLANNED USE OF SPA:

How you intend to use your spa will help you determine where you should position the spa. For example, will you use it more for recreational or therapeutic purposes? If your hot tub is mainly for family recreation, leave plenty of room around it for activity and lawn furniture. If you will use it more for relaxation and therapy, you'll probably want to create a specific mood around the tub.

ENVIRONMENT:

If you live in a climate with a snowy winter and hot summer, a place to change clothes or a house entry near the spa is convenient. A warmer climate may require shade from the hot sun. Consider placement of trees, shrubs, patio cover or perhaps a gazebo structure to provide what you will need. Remember that hot tubs periodically require drainage, so plan your environment accordingly.

PRIVACY:

Think of your surroundings during all seasons to determine your best privacy options. Consider the view of your neighbours when you plan the location of your spa.

VIEWS:

Think about the direction you will be facing when sitting in your spa. Do you have a special landscape you will find enjoyable? Perhaps there is an area that has a soothing breeze during the day or a lovely sunset in the evening.

KEEP CLEAN:

Prevent dirt and foliage from being tracked into your spa by utilizing concrete for paths and access areas. Check the location of spill paths from gutters, trees, and shrubs.

SERVICE ACCESS:

Many people choose to install tile or custom wood around their spas. If you are installing your tub with custom decorative trimming, remember to allow for access to it for service. Should you need service, a technician may need to remove the tub's side panels, or access it from beneath. It is always best to design special installations so the spa can still be moved, or lifted from the ground.

The Best Foundation...

Your new spa needs a good solid foundation. The area your spa sits on must be able to support the spa, the water in it and those who use it. A concrete foundation is more effective than a reinforced deck. If the foundation is inadequate, it may shift or settle after the spa is in place, causing stress to the shell or components.

BE AWARE:

Damage caused by inadequate or improper foundation support is not covered by the spa warranty. It is the sole responsibility of the spa owner to provide a proper foundation for the spa. Make sure the foundation where the spa is placed drains water away from the spa. Proper drainage will keep components dry.

If you choose to install your spa indoors, pay close attention to the flooring beneath it. Always remember a spa is filled with water. Choose flooring that will not be spoiled or ruined from water damage. Check with your contractor to verify your flooring can support the weight and water spills or splashing from your spa.

Your spa weight must always be considered when installing your spa. If you are installing it on an elevated wood deck or other structure, it is advisable to consult a structural engineer or contractor to ensure the structure will support the weight.

**IT IS STRONGLY RECOMMENDED THAT A QUALIFIED,
LICENSED CONTRACTOR
PREPARE THE FOUNDATION FOR YOU SPA.**

There is a 4" (10cm) minimum depth requirement for a concrete pad.

Electrical Requirements 110V Only Spas

A GFCI cord is supplied with most spas. Your spa must be wired with a GFCI either on the cord or on the outlet, but not both. Follow all local, state and federal electrical codes. Use only a line with a dedicated 15 Amp breaker. This line cannot be shared with any other appliances while the spa is running or the breaker will trip immediately. DO NOT use extension cords between the wall outlet and the spa or the breaker will trip immediately and can be a potential fire hazard. The plug should be easily accessible to users. The receptacle should be protected from the weather. Metal surfaces within 5 feet of the spa must be grounded to the spa.



Standard
Outlet with
GFCI Spa

Selecting the Power for Sereno & Fantasia Spas Only

To ensure you will have an opportunity to use your spa soon after delivery, it is very important that the required electrical service has been installed. Unless otherwise stipulated by your dealer, THIS IS YOUR RESPONSIBILITY.

IMPORTANT: All electrical circuits must be installed by a qualified, licensed electrician.

The Sereno, Fantasia and Tierra spa models are available as 110 volt or 230 volt convertible heating systems. These models come standard from the factory with 110 volt heating systems; however, with the addition of a subpanel and a control box wiring change, they can be converted to 230 volt operation. See the following sections for the electrical requirements for 110 volt operation, and 230 volt converted operation.

110 VOLT 15 AMP OPERATION REQUIREMENTS:

Cord Connected Models: The heater will provide approximately 1000 watts of heat only when the pump is operating in LOW speed and the thermostat is calling for heat. **NOTE:** The heater does not operate when the pump is on high speed.

It is highly recommended that the 110 volt spa models be on a dedicated 15 amp, 110 volt circuit.

Each 110 volt model comes equipped with approximately 13 feet (4 m) of usable power cord. (This is the maximum length allowed by ETL.) When the spa is installed, the power cord will come out of the bottom of the equipment compartment.

In addition to the dedicated 15 amp, 110 volt GFCI protected circuit, your spa requires a 15 amp single receptacle. This receptacle should contain an outdoor-rated, weather-resistant receptacle cover plate. The single receptacle and cover plate should be installed by your electrician prior to the delivery of your spa.

For your safety, when your electrician is installing the electrical outlet, it should be no closer than five feet (1.5 m) and no farther than ten feet (3 m) from the spa. (Reference National Electric Code 680-6a(1) and 680-41a.)

WARNING: Do not connect your spa to an extension cord!

The 110 volt GFCI switch and the receptacle must be protected from weather and landscape sprinklers—they should never get wet. Your spa has been carefully engineered to provide maximum safety against electric shock. Remember, connecting the spa to an improperly wired circuit will negate many of its safety features.

110 VOLT 30 AMP CONVERSION REQUIREMENTS:

Benefit when converting to a 30 amp system - the heater will provide approximately 1000 watts of heat when the pump is operating in LOW or HIGH speed and the thermostat is calling for heat.

- All converted models require a 30 amp, single phase, 110 volt circuit breaker in the main electrical service panel.
- All converted spas must be wired in accordance with applicable local and national electrical codes, all electrical work must be done by a licensed electrician.

NOTE: THIS CONVERSION REQUIRES THE USE OF A SUBPANEL TO SUPPLY POWER AND PROTECT THE SPA. The subpanel containing a GFCI breaker must be purchased separately.

230 VOLT 50 AMP CONVERSION REQUIREMENTS:

Benefit when converting to a 230 volt 50 amp system - the heater will provide approximately 4000 watts of heat when the pump is operating in LOW or HIGH speed and the thermostat is calling for heat.

- All converted models require a 50 amp, single phase, 230 volt circuit breaker in the main electrical service panel.
- All 230 volt spas must be wired in accordance with applicable local and national electrical codes, all electrical work must be done by a licensed electrician.

NOTE: THIS CONVERSION REQUIRES THE USE OF A SUBPANEL TO SUPPLY POWER AND PROTECT THE SPA. The subpanel containing a GFCI breaker must be purchased separately.

Electrical Requirements 230V Spas

Please refer to your spa's owner's manual for complete details and instructions.

⚠ DO NOT POWER THE SPA WITHOUT FIRST FILLING WITH WATER!

⚠ DANGER – RISK OF ELECTRIC SHOCK

Installations that do not conform to the following procedures and requirements may expose users to electric shock. Nonconforming installations will not be covered under warranty.

If installed in the United States, the electrical wiring of this spa must meet the requirements of the National Electric Code (NEC) and any applicable state or local codes. The electrical circuit must be installed by an electrical contractor and approved by a local building electrical inspection authority.

1. Installations within 5 feet of any metal surfaces must ground the metal surfaces to the spa. Use an 8 AWG solid copper wire and attach it to the grounding lug on the power pack, located in the equipment compartment. Only a licensed electrician may install power to the spa.
2. Power supply installation must include a suitably rated ground fault interrupter (GFCI) as required by NEC Article 680-42. The circuit breaker must be dedicated and should not be shared with any other appliances. It must be labeled and easily accessible to users.
3. The electrical supply for the spa must include a suitable rated switch or circuit breaker to open all ungrounded supply conductors to comply with Section 422-20 of the National Electric Code, ANSI/NFPA 70. The disconnecting means must be readily accessible to the spa's occupant but installed at least 5 feet from the spa water.
4. Power supply lines must be hard wired into the power pack. DO NOT use extension or plug type cords of any kind. The use of a shut-off box near the hot tub is also recommended. This box provides a quick and convenient method to shut off power to the hot tub for emergencies and maintenance.
5. Supply lines must be properly sized as per the NEC (National Electric Code). A ground line must be provided that is as large as the largest current carrying conductor, but no less than 8 AWG. Use copper wiring only.
6. Please open the front cover of the control box, and follow the instructions and wiring diagram printed on the backside.
7. **CAUTION, 230V POWERED SPAS** – These spas must be hard wired to your household electrical service box only. Do not use an extension cord or any other disconnect-able power cord. The use of an extension cord or a disconnect-able power cord is highly dangerous and will void all warranties!
 - Wire size must be appropriate per NEC and/or local codes.
 - Wire size is determined by length of run from breaker box to spa and maximum current draw.
 - THHN copper core wire is recommended.
 - All wiring must be copper to ensure adequate connections. Do not use aluminium wire.

CIRCUIT BREAKER REQUIREMENTS:

A new GFCI circuit breaker must be used for your spa installation. Do not use an existing breaker, as its condition is unknown.

<u>BREAKER</u>	<u>230V</u>
Capacity	50 amps
# of wires	4

On 230V systems always use a 4 wire system. ON all systems, the spa must be connected to a dedicated GFCI circuit breaker that is not shared with any other equipment. Do not use extension or plug type cords of any kind.

Electrical Wiring Diagram 230V Use

It is recommended that a licensed electrician install the power to your spa in accordance with the National Electric Code and/or any local electrical codes in effect at the time of installation.

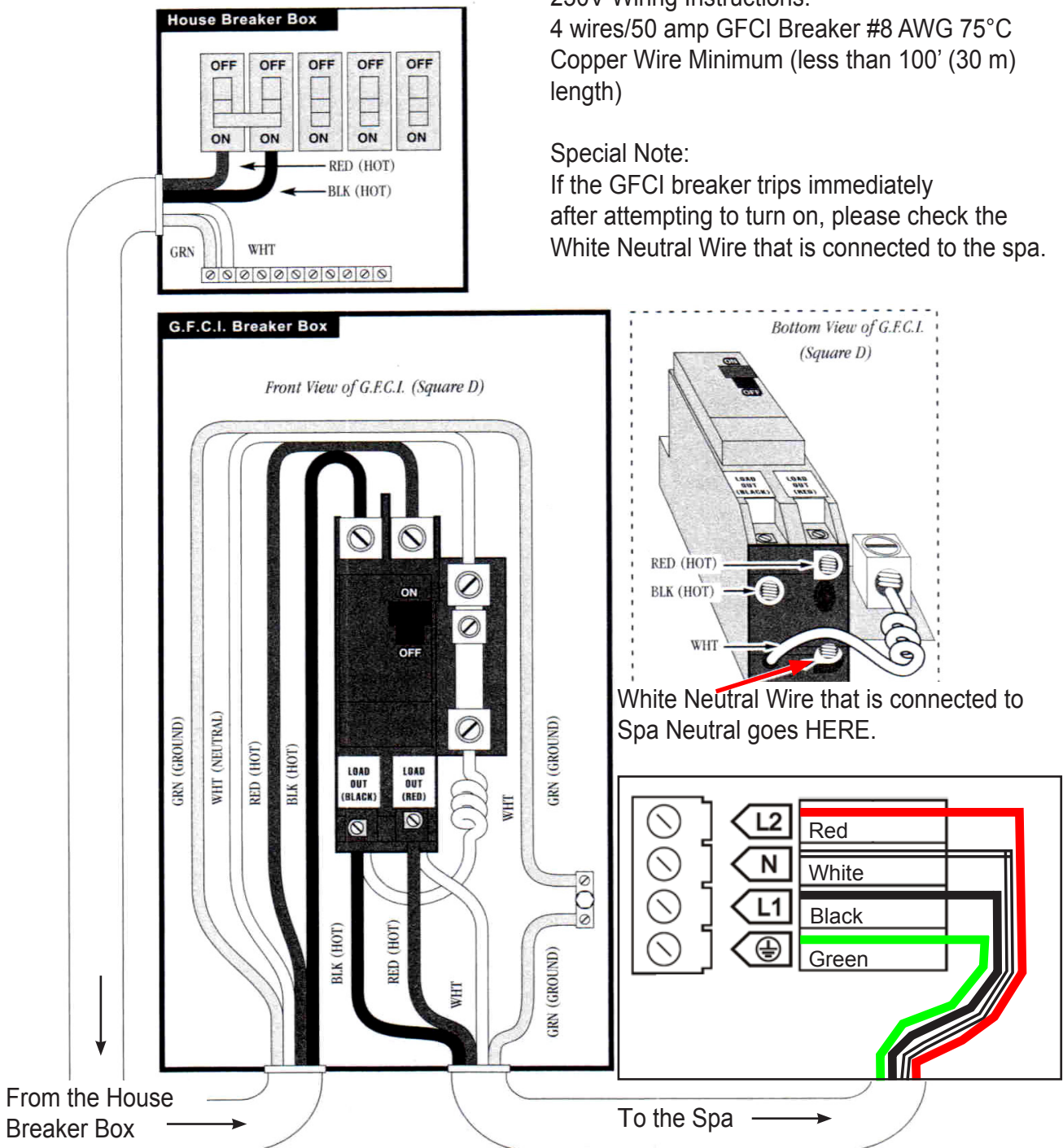
Power supply installation must include a properly rated GFCI circuit breaker. The circuit must be dedicated and should not be shared with any other appliances. The power supply must be hard wired into the power pack.

230V Wiring Instructions:

4 wires/50 amp GFCI Breaker #8 AWG 75°C Copper Wire Minimum (less than 100' (30 m) length)

Special Note:

If the GFCI breaker trips immediately after attempting to turn on, please check the White Neutral Wire that is connected to the spa.





Watkins Wellness®

Feel good. Live well.

1280 Park Center Drive
Vista, California 92081
Phone: (888) 961-7727

©2020 WATKINS WELLNESS.

