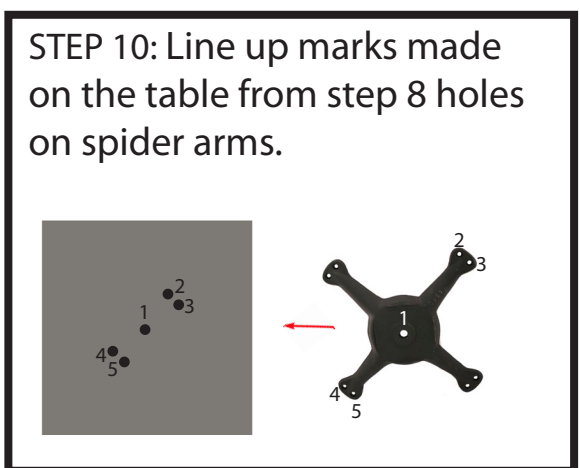
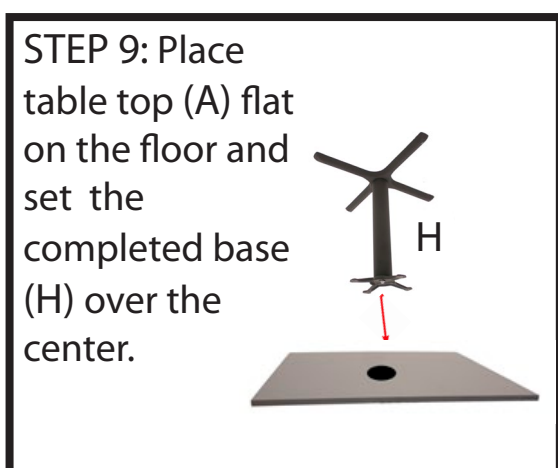
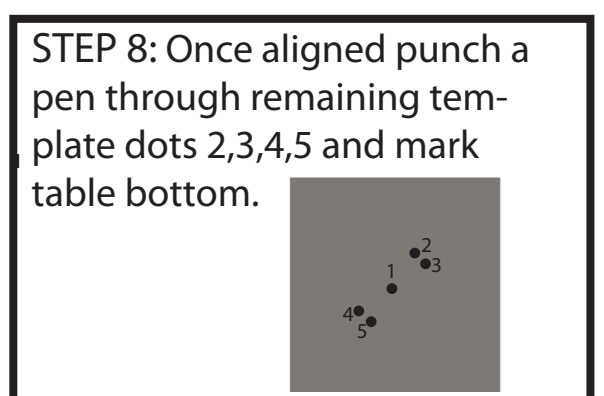
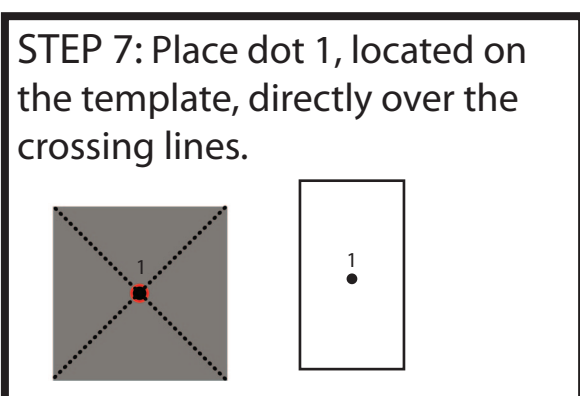
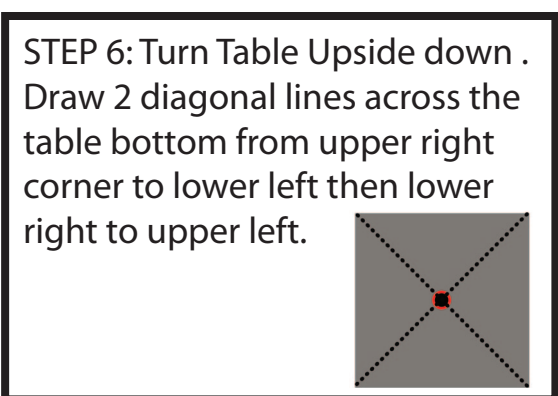
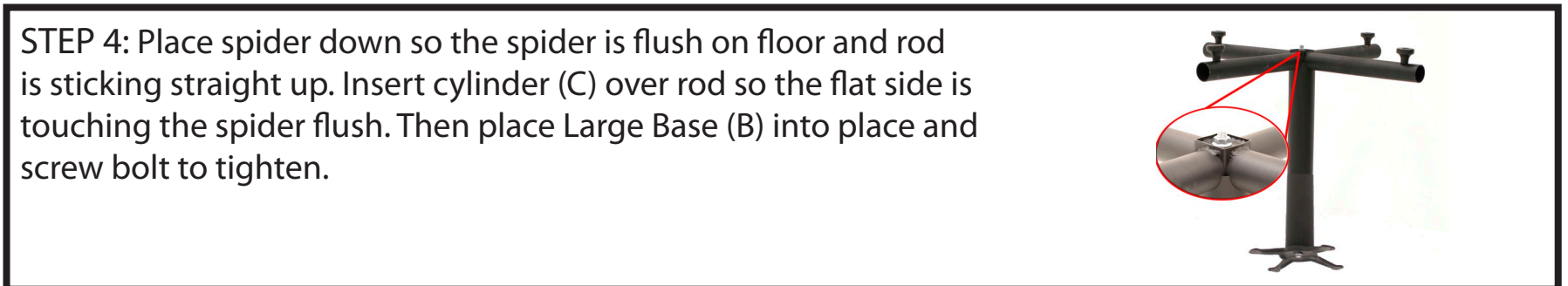
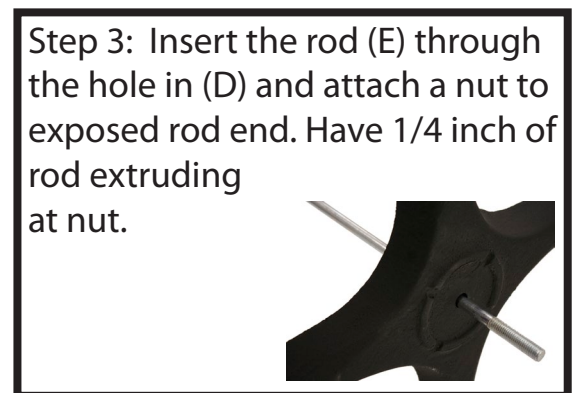
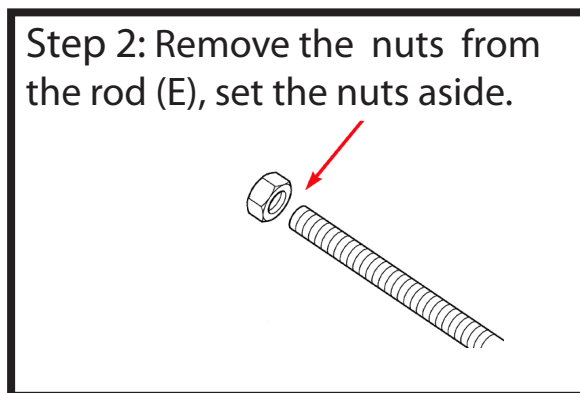
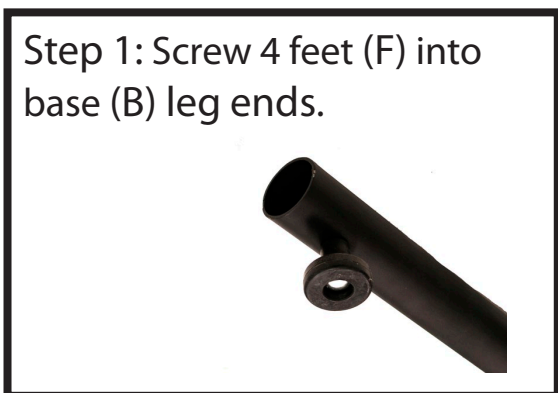
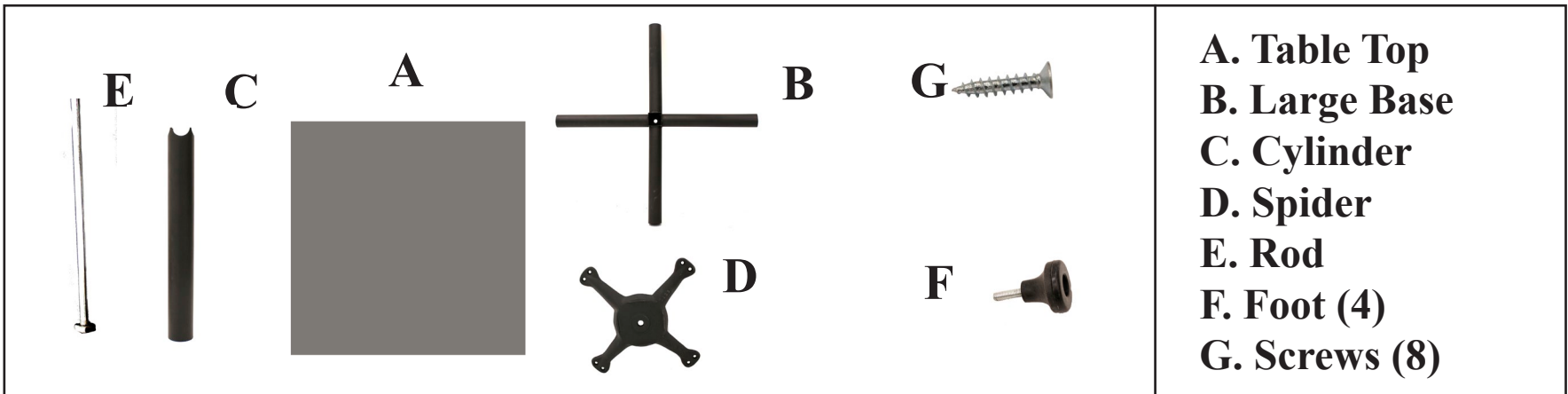




**Square Table Top • INSTRUCTIONS**

(MKTBX22, MKTBX30, MKTBX36, TTSQ3030, TTSQ3636, TTSQ4242, TTSQ4848)

Organize your parts. You will need a drill, pencil and crescent wrench. Two people are required for assembly.



**IMPORTANT NOTICE**

Place all wooden parts on a clean and smooth surface such as a rug or carpet to avoid the parts from being scratched.  
Check to be sure that you have a ll parts and hardware.  
Remove all wrapping materials, including staples & packing straps before you start to assemble.  
Do not tighten all screws/bolts until completely assembled.  
Keep all hardware parts out of reach of children.

Any problems or questions please call Regency Office Furniture at 1-866-816-9822

-The Outside dots are for 48" Table tops and MKTBX 36 X-Bases.

-The Inside dots are for 30", 36" and 42" Table tops and MKTBX 22 & 30 X-Bases.

