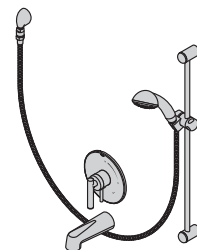





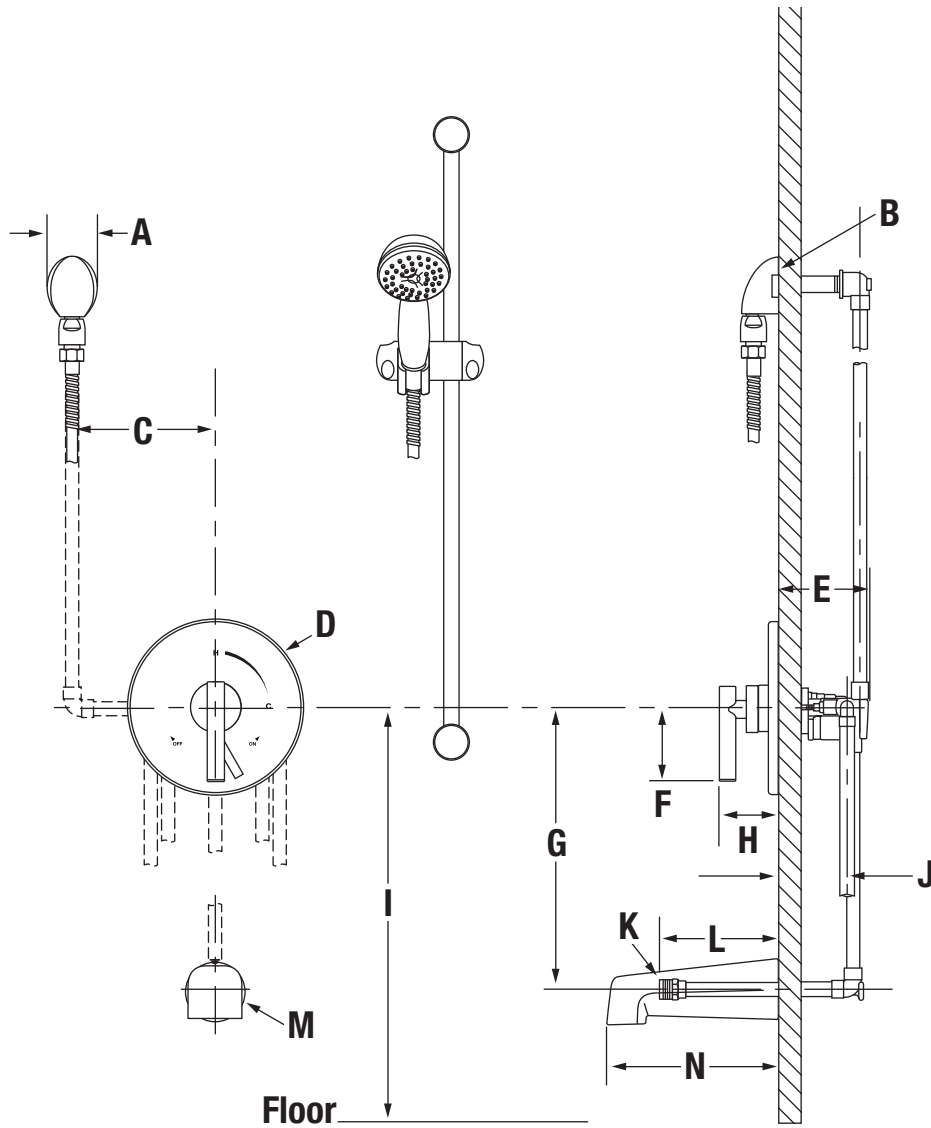
S-3504-H321-V-CYL-B-TRM
Dia™ Tub/Hand Shower Trim
Operation & Maintenance Manual



Model Numbers	Specifications
<input type="checkbox"/> S-3504-H321-V-CYL-B-TRM <i>Dia Tub/Hand Shower Trim</i>	<p>Tub/hand shower trim with lever handle and secondary integral diverter handle includes wall connection, 30" slide bar, non-diverter tub spout, in-line vacuum breaker, flexible metal hose and 1 mode hand shower with 2.5 gpm (9.5 L/min) flow restrictor. Components made from metal and plastic materials plated in standard polished chrome finish.</p>
Modifications	Compliance
<input type="checkbox"/> -1.5  1.5 gpm (5.7 L/min) flow restrictor <input type="checkbox"/> -2.0  2.0 gpm (7.6 L/min) flow restrictor	<p>-ASME A112.18.1/CSA B125.1</p> 
<input type="checkbox"/> Delete Suffix B <i>Chrome plastic escutcheon on valve with color graphics/indicators in place of standard brass escutcheon</i> <input type="checkbox"/> -LP <i>Loop handle</i> <input type="checkbox"/> -LR <i>Lever handle</i> <input type="checkbox"/> -SS <i>Slip spout on any tub and shower unit</i> <input type="checkbox"/> -STN <i>Satin nickel finish</i>	<p>Warranty</p> <p>Limited Lifetime - to the original end purchaser in consumer installations. 5 Years - for commercial installations.</p> <p>Refer to www.symmons.com/warranty for complete warranty information.</p>

Note: Append appropriate -suffix to model number.

Dimensions

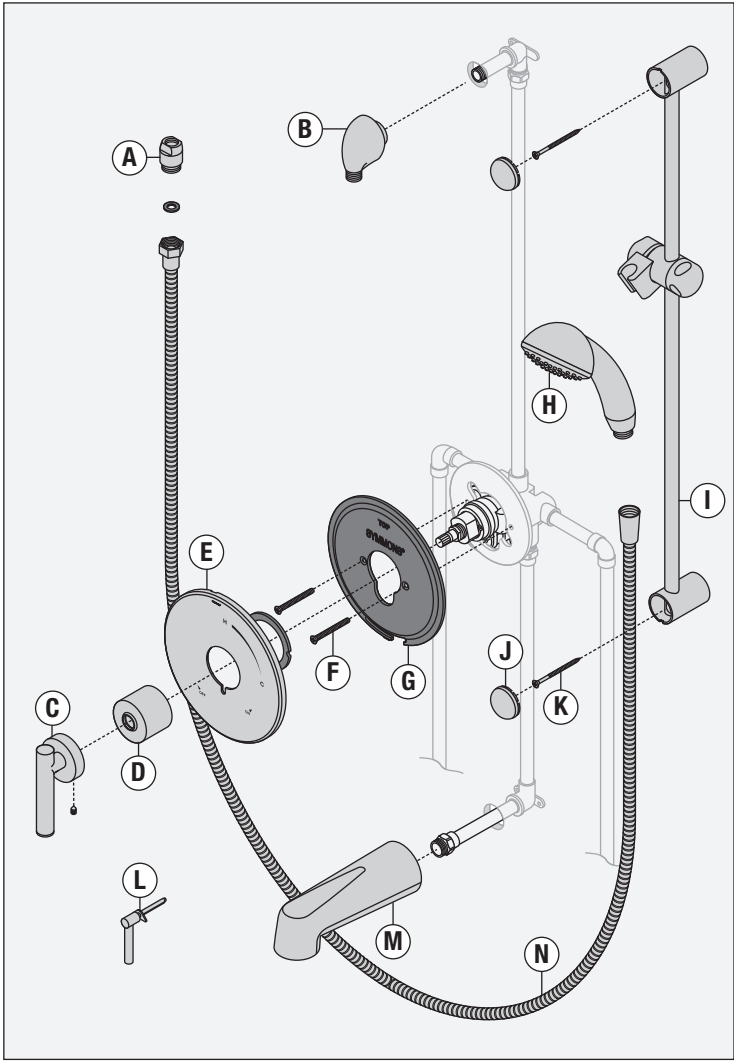


Measurements	
A	2 1/8", 54 mm
B	1/2" NPT thread must be recessed 1/4" from finished wall
C	6", 152 mm right or left
D	Ø 7 1/2", 191 mm (brass) Ø 7 3/4", 197 mm (plastic)
E	3 1/2", 89 mm
F	3", 76 mm
G	12", 305 mm
H	3 1/8", 79 mm
I	32", 813 mm
J	(Rough in) 2 3/8" ± 1/2", 60 mm ± 13 mm
K	1/2" NPT
L	5 1/4", 133 mm
M	Ø 2 1/2", 64 mm
N	7", 178 mm

Notes:


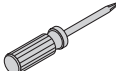



- 1) All dimensions measured from nominal rough-in (see J as reference).
- 2) Dimensions are subject to change without notice.

Parts Breakdown



Replacement Parts		
Item	Description	Part Number
A N	Vacuum Breaker and Hose	EF-104
C	Handle Assembly	T-242A
D	Dome Cover	T-19
E F G	Escutcheon Mounting Screws Mounting Plate	RTS-011 (Brass) RTS-012 (Plastic)
H	Hand Shower Wand	EF-100
I J K	Slide Bar Bracket Caps Mounting Screws	SC-115
L	Secondary Diverter Handle	RTS-013 (Brass) RTS-014 (Plastic)
M	Tub Spout	067

- Note:**
- 1) Append -STN to part number for Satin nickel finish.
-PNL to part number for polished nickel finish.
 - 2) Append -1.5 or -2.0 to hand shower for low flow.

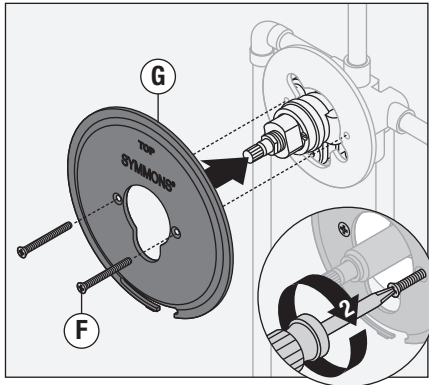
Required for Installation	
Adjustable wrench	
Phillips head screwdriver	
Allen wrench, 3/16"	
Teflon Tape	
Power Drill	

Installation

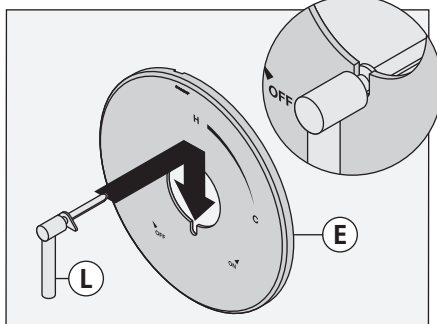
Note:

For valve body installation, please see valve body installation guide.

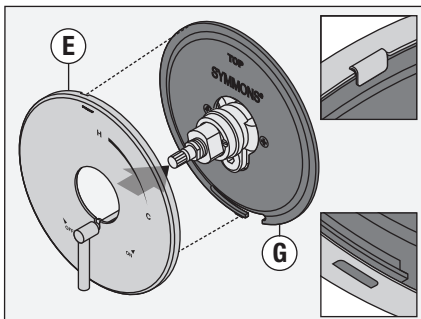
- 1) Install plastic mounting plate (G) to shower valve (S-4002-BODY). Secure with two screws (F).



- 2) Attach secondary integral diverter (L) to shower escutcheon (E).

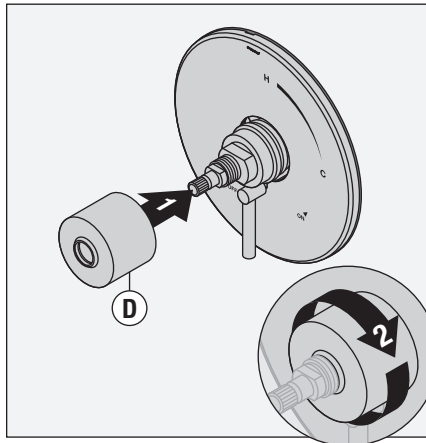


- 3) Attach shower escutcheon (E) to plastic mounting plate (G).

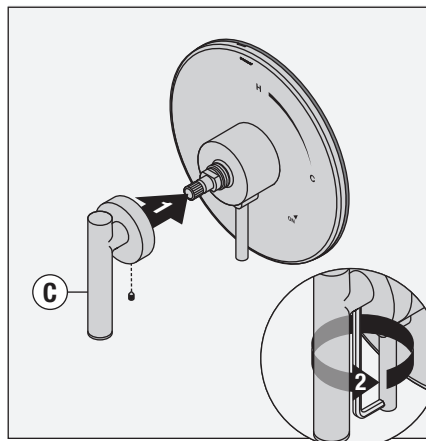


Note: Tabs should snap into place.

- 4) Install dome cover (D) to valve by turning clockwise.

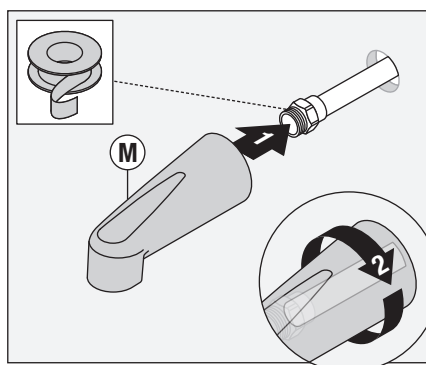


- 5) Install shower handle (C) to valve. Secure handle by tightening Allen screw.

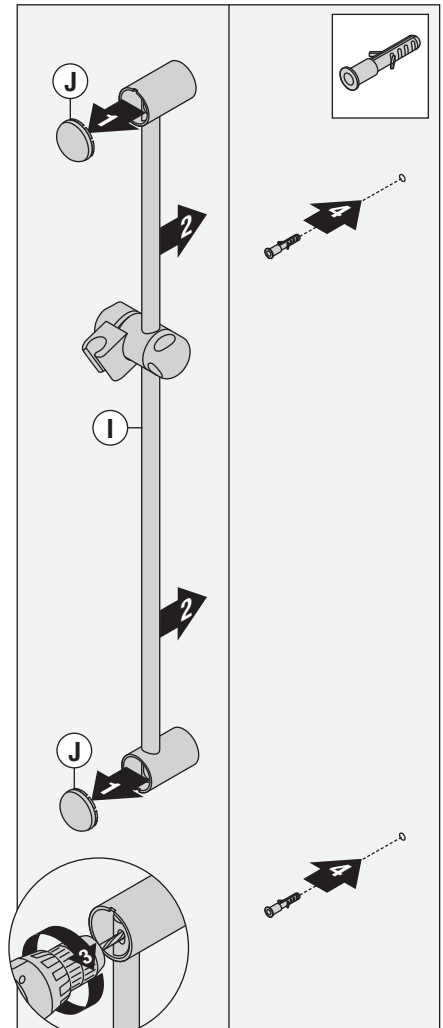


Note: Handle should be facing the 6 o'clock position.

- 6) Install tub spout (M) to stub out pipe. Turn clockwise to secure.



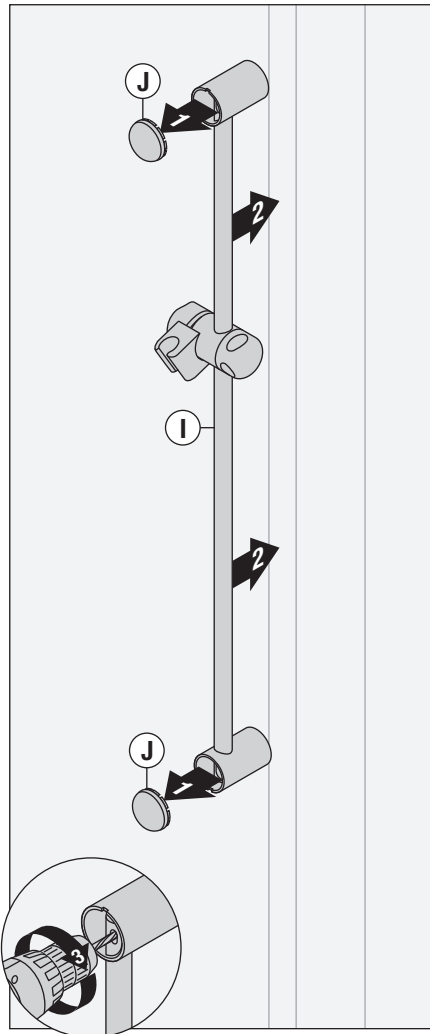
- 7a) **Dry Wall Option:** Remove upper and lower caps (J) from 30" slide bar brackets. Place 30" slide bar (I) into desired position. Using brackets as a guide, carefully drill 5/16" holes into wall. Remove 30" slide bar and install anchors.



Notes: Make sure that 30" slide bar holes and bracket holes are aligned before drilling. Before drilling bottom hole, make sure 30" slide bar is plumb.

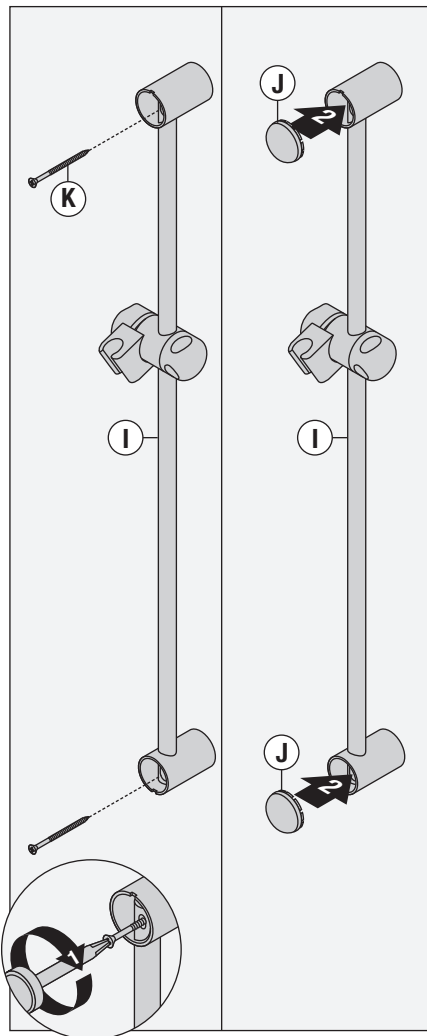
Installation

- 7b) **Stud Option:** Remove upper and lower caps (J) from 30" slide bar brackets. Place 30" slide bar (I) into desired position. Using brackets as a guide, carefully drill 1/8" pilot holes into stud.

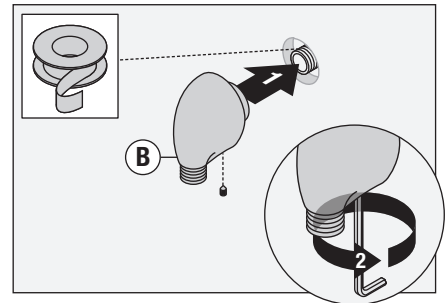


Notes: Make sure that 30" slide bar holes and bracket holes are aligned before drilling. Before drilling bottom hole, make sure 30" slide bar is plumb.

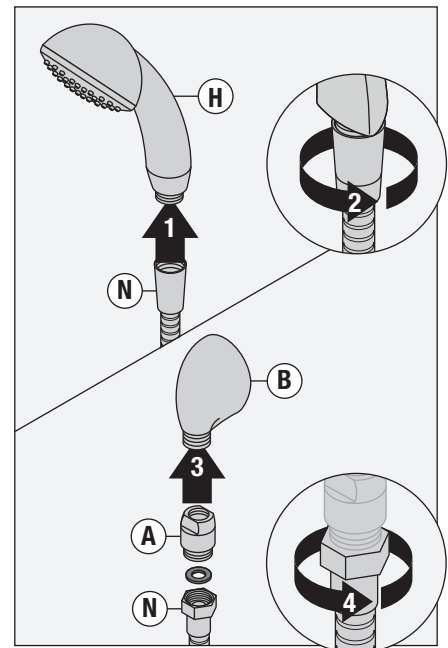
- 8) With 30" slide bar (I) in position, secure to wall using screws (K). Replace upper and lower caps (J) onto 30" slide bar brackets.



- 9) Install wall elbow (B) to stub out pipe. Tighten Allen screw (3 mm) to secure.



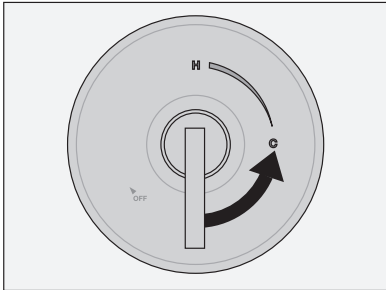
- 10) Attach large end of hand shower hose (N) to hand shower head (H). Attach small end of hand shower hose (N) and gasket to in-line vacuum breaker (A). Connect in-line vacuum breaker to wall elbow (B). Turn clockwise to tighten.



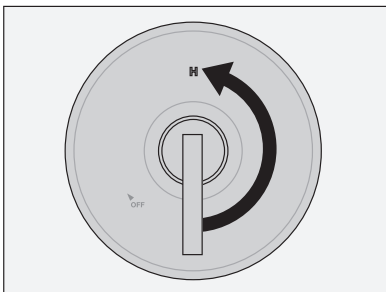
Operation

Temperature

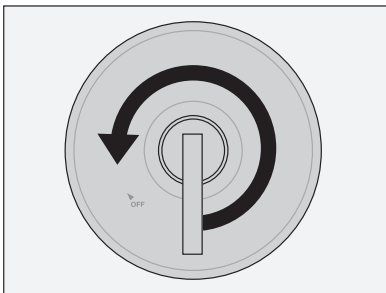
- 1) Turn shower handle counterclockwise approximately 1/4 turn to put valve in cold position.



- 2) Turn shower handle counterclockwise approximately 1/2 turn to put valve in warm position.

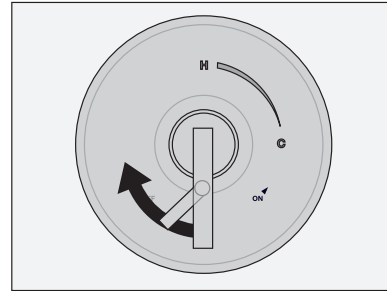


- 3) Turn shower handle counterclockwise approximately 3/4 turn to put valve in hot position.

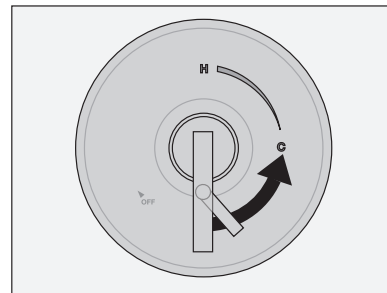


Diverter Control

- 1) Turn diverter lever left for tub spout operation.



- 2) Turn diverter lever right for hand shower operation.



Care and Cleaning

- 1) Clean finished trim area with a soft cloth using mild soap and water or a non-abrasive cleaner and then quickly rinse with water.

Troubleshooting Chart

Problem	Cause	Solution
Finish is spotting.	Elements in water supply may cause water staining on finish.	Clean finished trim area with a soft cloth using mild soap and water or a non-abrasive cleaner and then quickly rinse with water.