

**ZIP it tight.™** The Fastest Way To A Perfect Tight House.™



Installation  
Speed and Ease



Superior Moisture  
Protection



Superior  
Air Protection



Structural  
Durability

**ZIPsystem™**  
SHEATHING & TAPE



# ZIP it tight.™



## COMMITTED TO HELPING YOU BUILD FASTER AND SMARTER.

We are dedicated to providing you with building knowledge that will help you achieve an even higher quality build. Our online education center includes in-depth educational resources that help you ensure the optimal levels of comfort, performance and integrity for your builds.

Visit our online education center at [learn.huberwood.com](http://learn.huberwood.com).

### PRODUCTS

ZIP System® roof & wall sheathing.....	PAGE 4-5
ZIP System® roof sheathing .....	PAGE 6-7
ZIP System® r-sheathing .....	PAGE 8-9
ZIP System® long length sheathing and wind zone panels .....	PAGE 10
ZIP System® radiant barrier .....	PAGE 11
ZIP System™ flashing tape .....	PAGE 12
ZIP System™ stretch tape .....	PAGE 13
ZIP System™ liquid flash .....	PAGE 14

More information at [ZIPsystem.com](http://ZIPsystem.com)



Discover ZIP System® sheathing & tape. It's a one-of-a-kind structural roof and wall system with a built-in energy-efficient barrier that keeps moisture out and reduces air leakage while still allowing panels to properly dry. Plus, it goes up in just two easy steps:

1. Install the panels
2. Tape the seams

Fewer steps result in **40% faster installation** when compared to traditional housewrap and felt.

## THE FASTEST WAY TO ACHIEVE:



### INSTALLATION SPEED AND EASE

ZIP System® sheathing is easier to install than traditional housewrap and felt, helping save money on labor costs and improve project cycle times.



### SUPERIOR MOISTURE PROTECTION

By achieving optimal levels of permeability and drainage, ZIP System® sheathing & tape protects against water intrusion while still allowing the panels to properly dry.



### SUPERIOR AIR PROTECTION

ZIP System® sheathing & tape forms a tight barrier against unwanted air leakage, for a durable building envelope that promotes energy efficiency and increases interior comfort.



### STRUCTURAL DURABILITY

All ZIP System® panels are available as Structural 1\* rated, so you always get the ultimate strength that helps meet seismic and high wind zone code requirements.

## PLUS OPTIONS THAT PROVIDE:



### ENHANCED THERMAL RESISTANCE

The all-in-one ZIP System® r-sheathing adds an insulated layer that enhances the building envelope and increases its total R-Value.



### RADIANT BARRIER EFFICIENCY

Our ZIP System® radiant barrier panels are the fastest way to add superior radiant protection from extreme sun and heat to your roofs.

\*4'x8' 7/16" ZIP System® sheathing panels are Structural 1 rated from the Broken Bow, OK mill only.



## THREE THICKNESSES. TWO COLORS. IT'S ONE PANEL THAT CAN DO IT ALL.

ZIP System® sheathing & tape is designed to streamline work on the jobsite. It's a one-of-a-kind structural roof and wall system with a built-in energy-efficient barrier that keeps moisture out and reduces air leakage, while still allowing panels to properly dry. Three panel thicknesses let you choose the strength and protection you need for your build. Each one is engineered for use on both roof and wall applications, meaning one panel is all you need.



## SIMPLY INSTALL ZIP SYSTEM® PANELS AND TAPE THE SEAMS FOR MOISTURE AND AIR PROTECTION.

- 1** | **High quality structural sheathing panel** made of engineered wood delivers strength and durability.
- 2** | **Built-in vapor permeable, water-resistive barrier enhances drainage** and eliminates the hassles of housewrap and felt.
- 3** | A continuous, rigid air barrier decreases unwanted air leakage for **greater energy efficiency**.
- 4** | ZIP System™ flashing tape with a specially engineered, **high performance acrylic adhesive** bonds with ZIP System® panels for a permanent protective seal.

## PANELS ARE CONVENIENTLY COLOR-CODED

Green panels signify a thickness of 7/16" while red panels signify a thickness of 1/2" and 5/8". All three thicknesses can be used in both roof and wall applications, making it the perfect choice for any job.

### 7/16" Combo Panel



1/2" and 5/8" Combo Panels

## SAMPLE COMBINATIONS:

Refer to detailed installation instructions at [ZIPsystem.com](http://ZIPsystem.com)



7/16"  
Roof & Wall  
Combination



1/2" or 5/8" Roof  
& 7/16" Wall  
Combination



1/2" or 5/8" Roof  
with 1/2" or 5/8"  
Wall Combination

### 7/16" ZIP System® roof & wall sheathing

Performance Category	Panel Size	Panel Count	PS2 Span Rating	Code Evaluation Report	Vapor Transmission of WRB Layer	Air Barrier**
7/16	4' x 8'	80	24/16	ESR 1473 ESR 1474	12-16 perm ASTM E 96-00 Procedure B	ASTM E 2178 <0.02L(s•m²) @ 75 Pa  ASTM E 2357 <0.2 L(s•m²) @ 75 Pa
7/16 Extended Lengths*	4' x 9' 4' x 10'	70 60	24/16 Structural 1			
	4' x 9' 1-1/8" 4' x 10' 1-1/8"	70 60				

\* Contact your Huber Sales Professional for availability in your area.

\*\* When used with ZIP System™ flashing tape.

Although all projects are unique, experience has shown that 1 roll of 3 3/4" ZIP System™ flashing tape is needed for approximately 7 sheets of 4' x 8' ZIP System® sheathing.

This should only be considered a general "rule of thumb" when ordering materials with the understanding that some jobs may require more or less depending on the specific project.

### 1/2" & 5/8" ZIP System® roof & wall sheathing

Performance Category	Panel Size	Panel Count	PS2 Span Rating	Code Evaluation Report	Vapor Transmission of WRB Layer	Air Barrier*
1/2	4' x 8'	70	32/16 Structural 1	ESR 1473 ESR 1474	12-16 perm ASTM E 96-00 Procedure B	ASTM E 2178 <0.02L(s•m²) @ 75 Pa  ASTM E 2357 <0.2 L(s•m²) @ 75 Pa
5/8	4' x 8'	55	40/20 Structural 1			

\* When used with ZIP System™ flashing tape.

Although all projects are unique, experience has shown that 1 roll of 3 3/4" ZIP System™ flashing tape is needed for approximately 7 sheets of 4' x 8' ZIP System® sheathing. This should only be considered a general "rule of thumb" when ordering materials with the understanding that some jobs may require more or less depending on the specific project.



## THE FASTEST WAY TO A ROOF THAT STANDS UP TO THE ELEMENTS.

When it comes to building a quality roof that can stand up to the elements, nothing beats the tough, efficient protection of ZIP System® sheathing & tape. As an all-in-one structural panel system with a built-in water-resistive barrier, ZIP System sheathing & tape creates an airtight seal and eliminates the need for felt, synthetic underlayment or peel & stick options, saving significant labor time and costs. The simple panel-and-tape system installs quickly creating a rough dry-in that helps keep construction progress on track.

### SPEEDS INSTALLATION

ZIP System® sheathing & tape installs faster than traditional roof underlayment options. Simply install the panels, tape the seams and roof installation is ready to begin.

### SUPERIOR MOISTURE RESISTANCE

Engineered to prevent moisture while providing optimal permeability that allows water vapor to pass through and promote drying.

### QUICKER ROUGH DRY-IN

Saves valuable construction time, eliminating the need to install felt or an underlayment to produce rough dry-in status.

### STRUCTURAL DURABILITY

Enjoy the peace of mind of a secure roof that meets seismic and high-wind zone code requirements. The 7/16" panel is Structural 1 rated.

### 180-DAY EXPOSURE ALLOWANCE\*

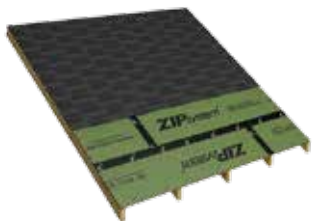
ZIP System® sheathing & tape protects against water intrusion for a rough dry-in unmatched by any other roof sheathing.

### ELIMINATES REWORK

With an integrated roof underlayment, ZIP System sheathing & tape provides a tight, durable system, eliminating costly rework and repairs typical to traditional felt systems.

\* Limitations and restrictions apply. Visit [ZIPsystem.com](http://ZIPsystem.com) for details.

## ZIP IT TIGHT™ WITH A VARIETY OF ROOFING MATERIALS.



Asphalt Shingles



Metal Shingles & Panels



Clay & Concrete Tile

ZIP System® sheathing & tape provides an excellent roof underlayment to receive many finished roof coverings including metal, tile and asphalt, fiberglass or cedar shingles. The panels lay flat and stay flat, ensuring a finished roof that looks as good as it performs.



**JUST INSTALL THE PANELS  
AND TAPE THE SEAMS  
FOR ROOF SHEATHING THAT  
INSTALLS FAST AND TIGHT.**

**7/16" ZIP System® roof & wall sheathing**

Performance Category	Panel Size	Panel Count	PS2 Span Rating	Code Evaluation Report	Vapor Transmission of WRB Layer	Air Barrier**
7/16	4' x 8'	80	24/16	ESR 1473 ESR 1474	12-16 perm ASTM E 96-00 Procedure B	ASTM E 2178 <0.02L(s•m²) @ 75 Pa  ASTM E 2357 <0.2 L(s•m²) @ 75 Pa
7/16 Extended Lengths*	4' x 9' 4' x 10'	70 60	24/16 Structural 1			
	4' x 9' 1-1/8" 4' x 10' 1-1/8"	70 60				

\* Contact your Huber Sales Professional for availability in your area.

\*\* When used with ZIP System™ flashing tape.

Although all projects are unique, experience has shown that 1 roll of 3 3/4" ZIP System™ flashing tape is needed for approximately 7 sheets of 4' x 8' ZIP System® sheathing.

This should only be considered a general "rule of thumb" when ordering materials with the understanding that some jobs may require more or less depending on the specific project.

**1/2" & 5/8" ZIP System® roof & wall sheathing**

Performance Category	Panel Size	Panel Count	PS2 Span Rating	Code Evaluation Report	Vapor Transmission of WRB Layer	Air Barrier*
1/2	4' x 8'	70	32/16 Structural 1	ESR 1473 ESR 1474	12-16 perm ASTM E 96-00 Procedure B	ASTM E 2178 <0.02L(s•m²) @ 75 Pa  ASTM E 2357 <0.2 L(s•m²) @ 75 Pa
5/8	4' x 8'	55	40/20 Structural 1			

\* When used with ZIP System™ flashing tape.

Although all projects are unique, experience has shown that 1 roll of 3 3/4" ZIP System™ flashing tape is needed for approximately 7 sheets of 4' x 8' ZIP System® sheathing. This

should only be considered a general "rule of thumb" when ordering materials with the understanding that some jobs may require more or less depending on the specific project.



## INSULATE AND PROTECT IN ONE INSTALLATION.

For installation convenience and exceptional, long-term performance, the all-in-one ZIP System® r-sheathing panel provides a new approach to sealing and insulating the building envelope. One panel delivers thermal, air and moisture resistance, while providing excellent strength and durability. This single-piece design lets you avoid the hassles of multi-level systems. Just install the panels and tape the seams for a wall system that provides structure, moisture protection, air tightness and insulation in a single installation.



### 5-IN-1 SYSTEM WITH LAYERS OF INNOVATION.

**1**

**CONTINUOUS FOAM INSULATION  
PROVIDES HIGHER R-VALUE**

- Increases thermal performance while eliminating thermal bridging
- Designed to meet new energy codes

**2**

**ENGINEERED WOOD PROVIDES STRUCTURE  
AND DURABILITY**

- Nailable wood base for trim and accessories
- Provides security against easy home intrusion

**3**

**BUILT-IN WATER RESISTIVE BARRIER ELIMINATES  
HOUSEWRAP AND FELT**

- Eliminates costly rework
- Instant rough dry-in with 180-day exposure guarantee\*
- Superior drainage efficiency that channels moisture downward off the panel face
- Permeable overlay promotes panel drying

**4**

**CONTINUOUS AIR BARRIER CREATES  
GREATER ENERGY EFFICIENCY**

- Decreases unwanted air leakage into and out of a building
- Helps protect the R-Value of insulation, reducing heating and cooling costs

**5**

**ZIP SYSTEM™ FLASHING TAPE PERMANENTLY  
SEALS ALL PANEL SEAMS**

- Acrylic formulation provides superior adhesion
- Rigorously tested for long-lasting performance
- Easily applied with tape gun and accessories

\* Limitations and restrictions apply. Visit [ZIPsystem.com](http://ZIPsystem.com) for details.



### 1" & 1 1/2" ZIP System® r-sheathing

Panel Type	Total Thickness	Panel Size	Panel Count	R-Value	Code Evaluation Report	Air Barrier
R-3	1"	4' x 8'	32	3.6	ESR 3373	ASTM E 2357 <0.2 L/(s·m²) @ 75 Pa
R-6	1-1/2"	4' x 8'	31	6.6		

## PHYSICAL PROPERTY DATA CHART

ZIP System® Properties	R-3 (1")	R-6 (1-1/2")
TECO Rated OSB	7/16"	7/16"
Foam	1/2"	1"
R-Value	3.6	6.6
Pieces Per Package	32 (4'x8' sheet)	31 (4'x8' sheet)
Square Feet Per Package	1024	992

Foam Performance		
Property	Test Method	Typical Results
Dimensional Stability	ASTM D 2126	< 2%
Compressive Strength	ASTM D 1621	20 psi
Water Absorption	ASTM C 209 ASTM D 2842	< 1% < 3.5%
Water Vapor Transmission	ASTM E 96	< 1.0 perm
Density	ASTM D 1622	Nominal 2.0 pcf
Flame Spread	ASTM E 84	40-60
Smoke Developed	ASTM E 84	50-170
Tensile Strength	ASTM D 1623	> 730 psf
Service Temperature		-40° – 200° F

ZIP System® Performance		
Water Resistance of Coatings	ASTM D 2247-97	Passed 14-day exposure test
Drainage Efficiency	ASTM E 2273	> 90%
Water Vapor Transmission	ASTM E 96B	12-16 perms (overlay)
Water Penetration	ASTM E 331-00	Passed
Air Barrier Assembly	ASTM E 2357-05 at 75Pa	0.037 L/(s·m²)
Wind Driven Rain	TAS-100	Passed 100 mph
Accelerated Weathering	ASTM G 154	Passed

Long term thermal resistance values of the foam were determined in accordance with ASTM C 1289-02. The R-Value of 0.55 for 7/16" OSB was obtained from ASHRAE Handbook, Fundamentals.

**DESIGN RATED**  
**ESR-3373**

## Allowable Shear Capacity for ZIP System® R-Sheathing with Framing of Douglas Fir-Larch<sup>1</sup> For Wind or Seismic Loading Under the 2012 and 2009 IBC

R-Sheathing Type <sup>3</sup>	Framing		Fasteners			Allowable Shear Capacity <sup>4,5</sup> (plf)
	Nominal Stud Size (min.)	Maximum Stud Spacing (in.)	Fastener Specifications <sup>2</sup>	Edge/Field Spacing (in.)	Minimum Penetration into Framing (in.)	
R-3	2-by-4	24	0.131" shank nails	4/12	1.5	245
R-6	2-by-4	24	0.131" shank nails	4/12	1.5	NA <sup>6</sup>
R-6	2-by-4	24	0.131" shank nails	3/6	1.5	215
R-3	2-by-4	16	16ga staples, 7/16" crown, 2" length	3/6	1.0	210
R-6	2-by-4	24	15ga staples, 7/16" crown, 2.5" length	3/6	1.0	NA <sup>6</sup>

For SI: Inch = 25.4mm; 1 pound per foot (ppf) = 14.59 N/m.

- For framing of other species, the shear value above must be multiplied by the Specific Gravity Adjustment Factor = [1 - (0.50 - SG)], where SG=Specific Gravity of the framing lumber in accordance with the AF&PA NDS. This adjustment factor must not be greater than 1.
- Fasteners must be common nails or equivalent, or staples, of a type generally used to attach wood sheathing.
- Type R-6 r-sheathing panels have a foam plastic insulation thickness of 1". Type R-3 r-sheathing panels have a foam plastic insulation thickness of .5".
- The shearwalls must have a maximum height-to-width aspect ratio of 2:1.
- The allowable shear capacity may be increased by 40% for wind in Allowable Stress Design in accordance with Section 2306.3 of the 2012 and 2009 IBC.
- This panel and fastening configuration is applicable to the prescriptive bracing requirements under the 2009 IRC.



## TALLER, TOUGHER AND FEWER SEAMS.

Get all the benefits of long length wall sheathing along with the superior moisture protection and air barrier that only ZIP System® sheathing provides. Only ZIP System® long length sheathing and wind zone panels combine the benefits of a longer panel with the ability to completely eliminate housewrap.

**A PERFECT FIT FOR EVERY PROJECT.**



4' x 9'



4' x 10'

ZIP System® long length sheathing is ideal for single- and multi-story projects.



4' x 9' + 1-1/8"



4' x 10' + 1-1/8"

ZIP System® wind zone panels are 1-1/8" taller, accommodating roof uplift in single-story projects without requiring additional paneling above.

### SEE HOW ZIP SYSTEM® LONG LENGTH SHEATHING AND WIND ZONE PANELS STACK UP.

	Other long length panels	ZIP System® long length panels	ZIP System® wind zone panels
<b>More efficient</b> panel installation	X	X	X
<b>Can eliminate blocking</b> at horizontal panel seams	X	X	X
<b>Fewer horizontal seams</b>	X	X	X
<b>Less panel cutting</b> and waste	X	X	X
Can be <b>designed to resist combined uplift and shear*</b>	X	X	X
<b>Eliminate need for housewrap</b> with built-in vapor permeable water-resistive barrier		X	X
<b>Continuous rigid air barrier</b> decreases unwanted air leakage for greater energy efficiency		X	X
Backed by <b>30-year system warranty**</b>		X	X
<b>40% faster installation</b> when compared to other long length systems using housewrap		X	X
Long length panel, water-resistive barrier, air barrier and seam sealer are an <b>engineered system from the same manufacturer</b>		X	X
<b>Structural 1 rating</b> for 7/16", 1/2" and 5/8" sizes***		X	X

\* See the American Wood Council, *Special Design Provisions for Wind and Seismic*, AWC SDPWS-08

\*\* Limitations and restrictions apply. Visit [ZIPsystem.com](http://ZIPsystem.com) for details.

\*\*\* 1/2" and 5/8" panels available by special order.

#### ZIP System® long length sheathing and wind zone panels

Product	Performance Category	Panel Size	Panel Count	PS2 Span Rating	Code Evaluation Report	Vapor Transmission of WRB Layer	Air Barrier
Long Length	7/16	4' x 9' 4' x 10'	70 60	24/16 Structural 1	ESR 1473 ESR 1474	12-16 perm ASTM E 96-00 Procedure B	ASTM E 2178-03 <0.02L(s•m²) @ 75 Pa
Wind Zone	7/16	4' x 9' 1-1/8" 4' x 10' 1-1/8"	70 60				ASTM E 2357-05 <0.2 L(s•m²) @ 75 Pa



## CAN TAKE A SCORCHING. AND A DRENCHING.

ZIP System® radiant barrier roof panels are the fastest way to beat heat and moisture. These easy-to-install, all-in-one structural panels feature a built-in water resistive layer along with a new radiant barrier.

### ZIP UP A COOLER HOME.

Reduces radiant heat transfer as much as **97%**

Decreases attic temperatures up to **30°**

Reduces home cooling costs up to **12%\***

## A FASTER, STRONGER RADIANT BARRIER SOLUTION.

	Other radiant barrier panels	ZIP System® radiant barrier panels
<b>Reduces heat load on attic mounted A/C systems</b>	X	X
<b>Less heat transfer to the living space</b>	X	X
<b>Energy usage is reduced</b>	X	X
<b>Faster installation when compared to other radiant barrier systems using roofing felt</b>		X
<b>Eliminates the need for felt with a built-in vapor permeable water-resistive barrier</b>		X
<b>Durability reduces re-work and long term performance</b>		X
<b>Backed by a 30-year system warranty**</b>		X

### 7/16", 1/2" & 5/8" ZIP System® roof sheathing

Performance Category	Panel Size	Panel Count	PS2 Span Rating	Code Evaluation Report	Vapor Transmission of WRB Layer	Air Barrier***
7/16	4' x 8'	80	24/16 Structural 1	ESR 1473 ESR 1474	12-16 perm ASTM E 96-00 Procedure B	ASTM E 2178 <0.02L(s·m²) @ 75 Pa
1/2	4' x 8'	70	32/16 Structural 1			ASTM E 2357 <0.2 L(s·m²) @ 75 Pa
5/8	4' x 8'	55	40/20 Structural 1			

\* The Florida Solar Energy Center/University of Central Florida Publication #FSEC EN-15-87 titled "Radiant Barriers: A Question & Answer Primer." Studies represent cases in the Southeast and may not be representative of other regions. Savings also depend on the amount of heat the roof and attic contribute to a homes cooling load.

\*\* Limitations and restrictions apply. Visit ZIPsystem.com for details.

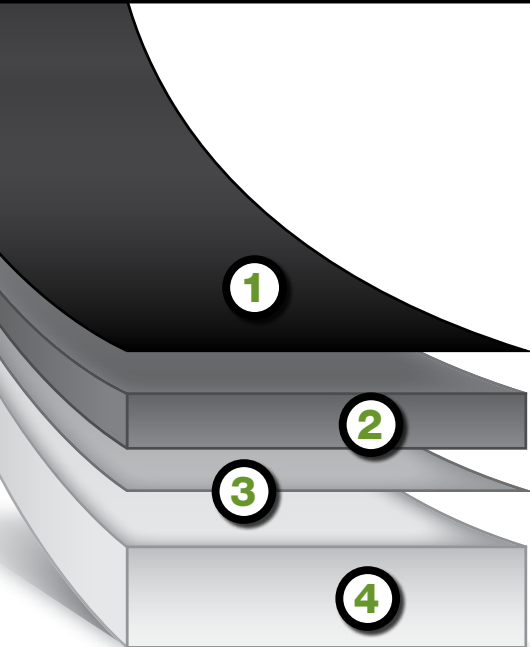
\*\*\* When used with ZIP System™ flashing tape.

Although all projects are unique, experience has shown that 1 roll of 3 3/4" ZIP System™ flashing tape is needed for approximately 7 sheets of 4' x 8' ZIP System® sheathing. This should only be considered a general "rule of thumb" when ordering materials with the understanding that some jobs may require more or less depending on the specific project.



## OUTSTANDING ADHESION, RESILIENCE AND EFFICIENCY.

ZIP System™ flashing tape is made of an advanced acrylic adhesive, proven to deliver a superior airtight and watertight seal that withstands many years of harsh weather. It installs quickly by hand or by using the ZIP System™ tape gun, and is ideal for both seam sealing and flashing applications.



## EVERY LAYER WORKS TOGETHER FOR TOTAL PERFORMANCE AND PROTECTION.

- 1 SLIP RESISTANT**  
Top layer provides good tack during installation for safety
- 2 WEATHER AND UV PROTECTION**  
Thick inner layer offers dimensional stability
  - Carbon black – for “sunscreen” that protects other layers
  - Antioxidants for durability
  - Warranted for up to 180 days of extreme weather and UV exposure\*
- 3 LONG-TERM DURABILITY**  
Bonding layer specially formulated to bond with the adhesive for durability
- 4 ALL WEATHER ADHESION**
  - Best performing flashing tape in all weather conditions
  - Advanced acrylic adhesive delivers a lifetime of superior adhesion
  - Resists heat and UV light and creates permanent bond strength

## ZIP SYSTEM™ FLASHING TAPES OFFER SUPERIOR ADHESION AT BROAD TEMPERATURE RANGE.

**WATER RESISTIVE BARRIER** when used with ZIP System® sheathing

Works on a **VARIETY OF SURFACES**

**REPOSITIONABLE** material

Cold temperature application **AS LOW AS 20° F**

**SUPERIOR ACRYLIC ADHESION** better than butyl/asphalt

**180-DAY EXPOSURE** guarantee\*

ZIP System™ flashing tape								
Nominal Width	Roll Length	Flashing Tape Thickness	Adhesive Technology	Code Evaluation Report	Installation Temperature Range	Allowable UV Exposure	Tensile Strength	Elongation
3-3/4"	75'	12 mils	Acrylic	ESR 2227 AAMA 711-07: Pass	20°–120°F	180 Days*	938 psi	400%-800%
6"								

\* Limitations and restrictions apply. Visit ZIPsystem.com for details.



## SINGLE PIECE INSTALLATION STRETCHES, CURVES, STICKS AND SEALS.

ZIP System™ stretch tape easily stretches to fit sills, curves and corners with a single piece without having to piece tape segments together. This avoids seams or joints. Made of a high-performance composite acrylic, the tape conforms to challenging applications and locks out moisture even over mismatched surfaces. And ZIP System stretch tape can be pulled up and reapplied for hassle-free installation, providing a tight, energy-efficient seal in no time!



## SPEED THROUGH APPLICATIONS WITH TAPE THAT STRETCHES.

ZIP System™ stretch tape is fast and effective. Nothing seals around curves and corners better. So you can zip through tricky installations with ease.

### STRETCHES TO FIT

Easily stretches to conform to corners and curves

### EXCELLENT MOISTURE BARRIER

Provides a strong tight bond for an effective ZIP IT TIGHT™ seal, even around fasteners

### LABOR SAVING

Eliminates the need to piece tape segments together in challenging applications

### REPOSITIONABLE

Can be pulled up and reapplied for hassle-free installation

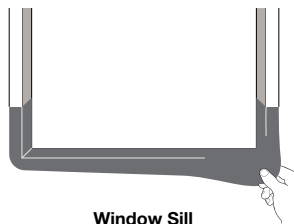
### VERSATILE

Ideal for your toughest applications including curved windows and wall penetrations

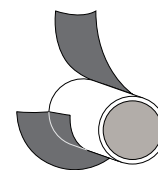
## ZIP SYSTEM™ STRETCH TAPE WORKS ON A VARIETY OF APPLICATIONS.



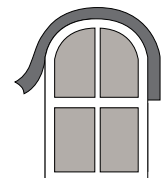
Stretches In Any Direction



Window Sill



Wall Penetration



Curved Window

### ZIP System™ stretch tape

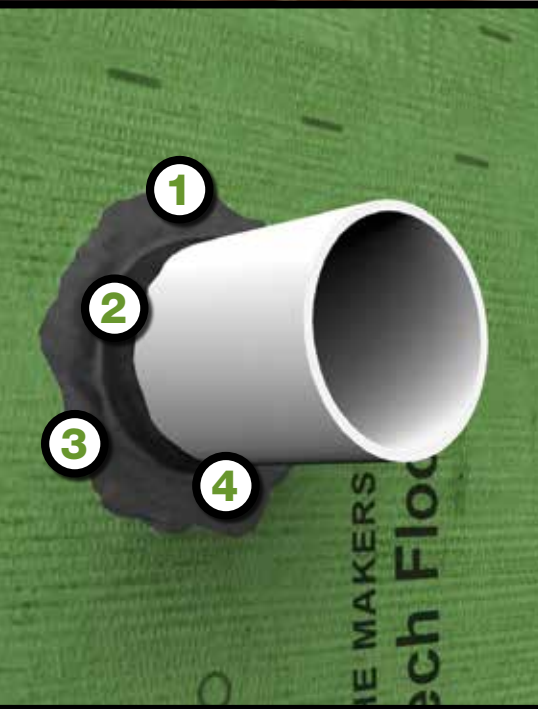
Nominal Width	Roll Length	Stretch Tape Thickness	Installation Temperature Range	Allowable Weather Exposure	Tensile Strength	Elongation
6"	75'	42 mils	20°-120°F	180 Days*	225 psi	800%-1200%

\* Limitations and restrictions apply. Visit ZIPsystem.com for details.



## ULTIMATE VERSATILITY FOR SEALING EVERY ROUGH OPENING.

ZIP System™ liquid flash is a liquid-applied flashing membrane made of STPE (silyl-terminated-polyether) technology. This high-performance formulation combines the durability of silicones with the toughness of urethanes.



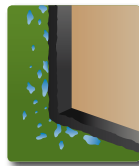
## ENGINEERED FOR SEALING IRREGULAR, CURVED OR HARD TO FLASH AREAS.

- 1 | OPTIMAL VISCOSITY**  
Flows easily to seal irregular shapes and surfaces
- 2 | QUICK CURE TIME**  
Immediately weather resistant and tack free in as little as 20–40 minutes depending on conditions. Target thickness achieved when substrate is no longer visible
- 3 | WEATHER AND UV RESISTANT**  
Warranted for up to 180 days of extreme weather and UV exposure\*
- 4 | PROPER ADHESION TO A WIDE RANGE OF SURFACES**  
Bonds to wood, concrete, masonry, architectural metals, glass, PVC, FRP, EPDM and most other building materials

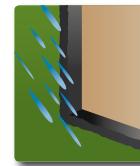
## FORMS AN INSTANT SEAL, UNDER THE MOST DEMANDING CONDITIONS.



Flows easily to seal difficult areas, such as rough openings and wall penetrations.



Bonds and cures in wet weather and on damp substrates.



Becomes waterproof immediately after installation, providing fast rough dry-in.

### ZIP System™ liquid flash

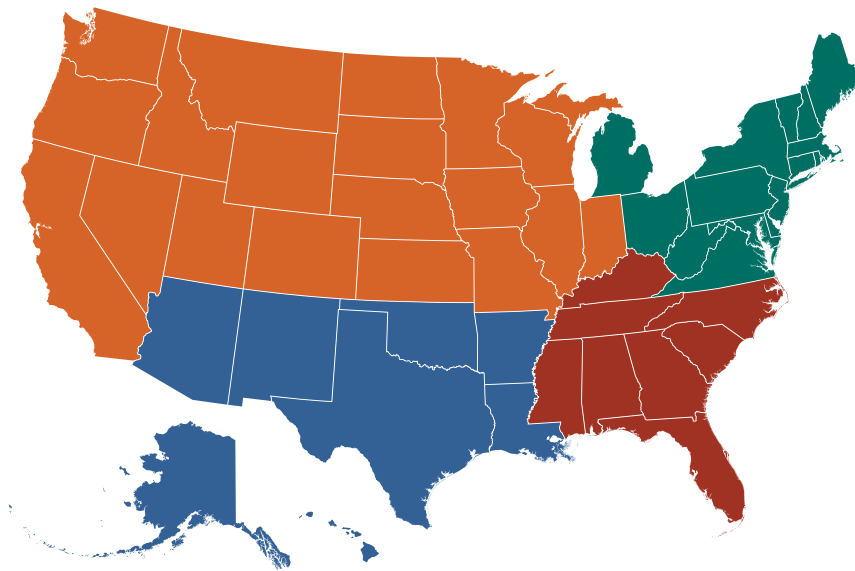
Packaging Options	Typical Coverage: Window Sill Flashing (2x4 Framing)	Cured Thickness	Compound Technology	Water and Air Penetration	Installation Temperature Range	Allowable UV Exposure	Tack Free Time	Cure Time
20 oz. Sausage Pack	20 lf (approx. six 3'0" window sills)	12 mils	STPE Polymer	ASTM E331: Pass	35°–110°F	180 Days*	20-40 Minutes**	12 mils = 4 Hours**
29 oz. Cartridge	29 lf (approx. nine 3'0" window sills)			ASTM E2357: Pass				


\* Limitations and restrictions apply. Visit ZIPsystem.com for details.

\*\* At 70°F and 50% relative humidity. Low temperatures and low relative humidity slow dry time; high temperatures and high relative humidity accelerate dry time.

# ENERGY AND SAVINGS ARE BUILT RIGHT IN WITH ZIP SYSTEM® SHEATHING AND TAPE.

SEE WHAT YOU CAN SAVE.



City	Average Annual Savings on Heating and Cooling Costs	Annual ZIP System Wall Savings (\$ Savings)	City	Average Annual Savings on Heating and Cooling Costs	Annual ZIP System Wall Savings (\$ Savings)	City	Average Annual Savings on Heating and Cooling Costs	Annual ZIP System Wall Savings (\$ Savings)
Boise	13%	\$189	New Orleans	5.8%	\$74	Washington	9.1%	\$187
Chicago	12%	\$194	Dallas	6.7%	\$125	Philadelphia	10.5%	\$225
Denver	11%	\$156	Little Rock	7.2%	\$136	Boston	13%	\$353
Fargo	16%	\$306	Oklahoma City	9.4%	\$136	Detroit	12.5%	\$242
Madison	13%	\$275	Omaha	11.6%	\$177	Syracuse	12%	\$318
Milwaukee	14%	\$282				Portland	13.7%	\$380
Minneapolis	14%	\$252				 <p><i>Calculations are estimated, based on a 2 story, 3,200 sq./ft home on slab foundation with gas heat and central air. Based on the following average utility prices: Electricity; 0.0750 \$/kWh Gas: 10.67 \$/mcf</i></p>		
Omaha	12%	\$177	City	Average Annual Savings on Heating and Cooling Costs	Annual ZIP System Wall Savings (\$ Savings)			
Portland	10%	\$166	Orlando	3.8%	\$58			
Salt Lake City	11%	\$155	Atlanta	7.5%	\$165			
Seattle	11%	\$175	Charlotte	7.5%	\$151			
St. Louis	11%	\$191	Nashville	9.1%	\$130			
Wichita	10%	\$177						

**ZIP UP YOUR NEXT PROJECT, AND START TAKING ADVANTAGE OF THE FASTEST WAY TO A PERFECT TIGHT HOUSE.**

Visit [ZIPsystem.com](http://ZIPsystem.com) or call 1.800.933.9220 for details.



Installation Speed and Ease



Superior Moisture Protection



Superior Air Protection



Structural Durability

“The quality of ZIP System® sheathing is visible at a production level, not just a custom level. My company is forecasted to build 600 homes this year, and I intend to use ZIP System® sheathing and tape in every one.”

Patrick Zalupski, Dream Finders, Orange Park, FL



**REBATES & INCENTIVES:**

**ONE MORE WAY IT PAYS TO SWITCH.**

We make it even easier to switch to ZIP System® sheathing on your next project. Ask about receiving special first-time discounts on your order.



The ZIP System® product line is backed with an industry-leading 30-year limited warranty.\*

\*Limitations and restrictions apply. Visit [ZIPsystem.com](http://ZIPsystem.com) for details.

ZIP System® flashing tape

**2012 IRC & IBC  
Code Recognized  
ESR-2227**