

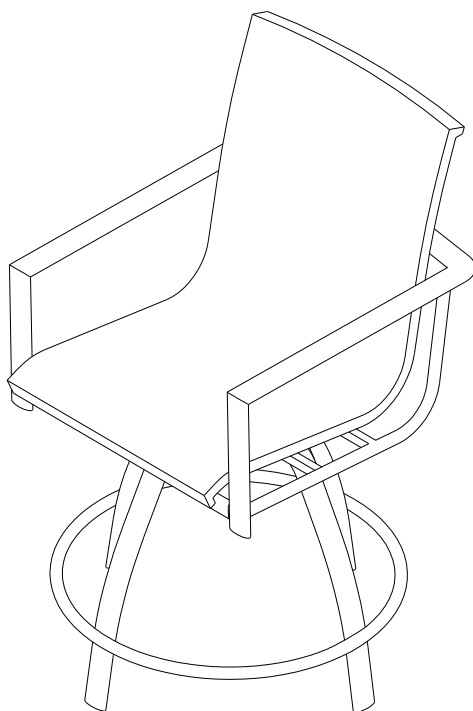


Item # 1002 695 373  
Model # 5477-7PC

## USE AND CARE GUIDE

---

### BECKHAM 7PC BALCONY HEIGHT DINING CHAIR



Questions, problems, missing parts? Before returning to the store,  
call Hampton Bay Customer Service  
8 a.m. - 6 p.m., EST, Monday-Friday

**1-855-HD-HAMPTON**

**HAMPTONBAY.COM**

---


#### **THANK YOU**

*We appreciate the trust and confidence you have placed in Hampton Bay through the purchase of this dining chair. We strive to continually create quality products designed to enhance your home. Visit us online to see our full line of products available for your home improvement needs. Thank you for choosing Hampton Bay!*

# Table of Contents

<b>Table of Contents</b> .....	<b>2</b>	<b>Pre-assembly (continued)</b> .....	<b>5</b>
<b>Safety Information</b> .....	<b>2</b>	Package Contents .....	5
<b>Warranty</b> .....	<b>3</b>	<b>Assembly</b> .....	<b>6</b>
2 YEAR LIMITED WARRANTY .....	3	<b>Assembly (continued)</b> .....	<b>7</b>
What is Covered .....	3	<b>Care and Cleaning</b> .....	<b>8</b>
What is Not Covered .....	3		
<b>Pre-assembly</b> .....	<b>4</b>		
Planning ASSEMBLY .....	4		
Hardware Included .....	4		

# Safety Information

 **NOTE:** Tighten each bolt a few revolutions at a time, alternating between bolts in a cross corner (X) pattern to ensure your chair frame is level.

# Warranty

---

## 2 YEAR LIMITED WARRANTY

### WHAT IS COVERED

This product is covered under the manufacturer's 2-Year Limited Warranty against defects in materials and workmanship. If your furniture frame fails structurally due to inferior metals or welds during normal use within two years of purchase, the manufacturer will repair or replace the defective piece at no charge. Replacement of missing or initially defective parts will be sent at no charge for a period of 10 days from date of purchase. Warranty is to the original purchaser and is non-transferable. Proof of purchase (dated register receipt) and in some cases, photos of product are required for warranty claims. Lack of original receipt will void the warranty. We reserve the right to make substitutions with similar merchandise, if the model in question is no longer in production.

### WHAT IS NOT COVERED

This warranty excludes: furniture used for commercial use, contract or other non-residential purposes, freight damage, furniture damaged by acts of nature, abuse or lack of proper care, vandalism or improper assembly. Discoloration or fading of straps or fabric or finish as a result of chemicals or spills is not covered. Glass, tile, and stone are not covered against breakage; frames and hardware are not covered against corrosion or rusting. Furniture sold "as is", display models and/or clearance items are not covered. In addition, purchased parts are not covered under this warranty. We reserve the right to make substitutions with similar merchandise, if the model in question is no longer in production. Exclusion also includes time for loss of use, inconvenience, travel, packaging or any other incidental or consequential damages. It remains the customer's responsibility for freight and packaging charges to and from our service center.

Contact the Customer Service Team at 1-855-HD-HAMPTON or visit [www.Hamptonbay.com](http://www.Hamptonbay.com).

# Pre-assembly

## PLANNING ASSEMBLY

Please read this entire instruction manual before beginning assembly.

Identify all parts packed in carton using the parts lists. Remove all protective materials. If any parts are missing or damaged, do not attempt to assemble.



**NOTE:** Place parts on a nonabrasive surface to avoid scratching

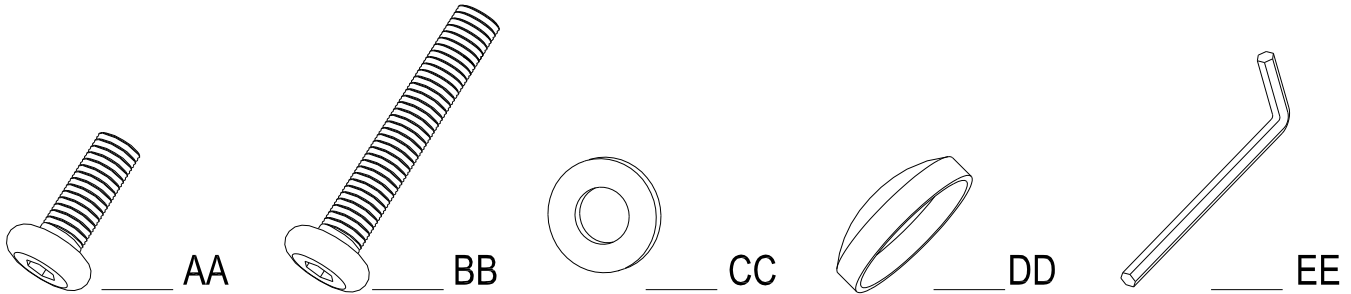
## HARDWARE INCLUDED



**NOTE:** Hardware not shown to actual size.



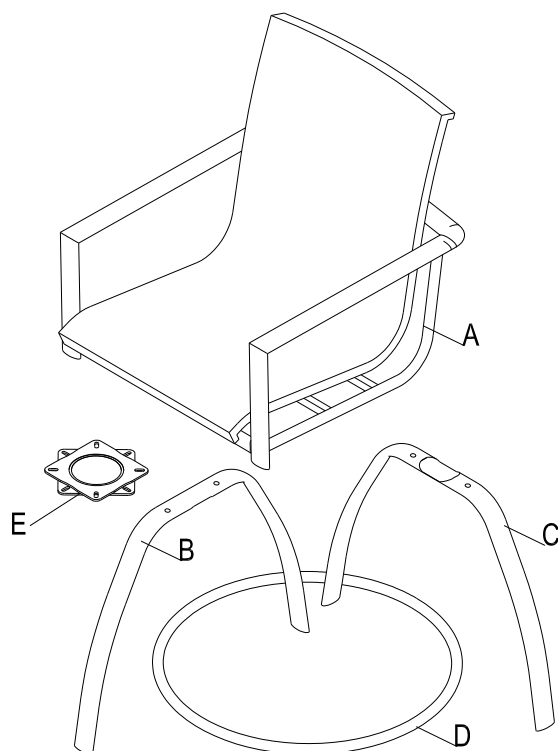
**NOTE:** Hardware kit includes one extra piece of each hardware item.



Part	Description	Quantity
AA	Hex bolt M6x15	8
BB	Hex bolt M6x35	4
CC	Metal washer	12
DD	Plastic bolt cap	12
EE	Hex wrench	1

# Pre-assembly (continued)

## PACKAGE CONTENTS



Part	Description	Quantity
A	Chair frame	1
B	Upper leg	1
C	Lower leg	1
D	Leg connector bracket	1
E	Ball bearing mechanism	1

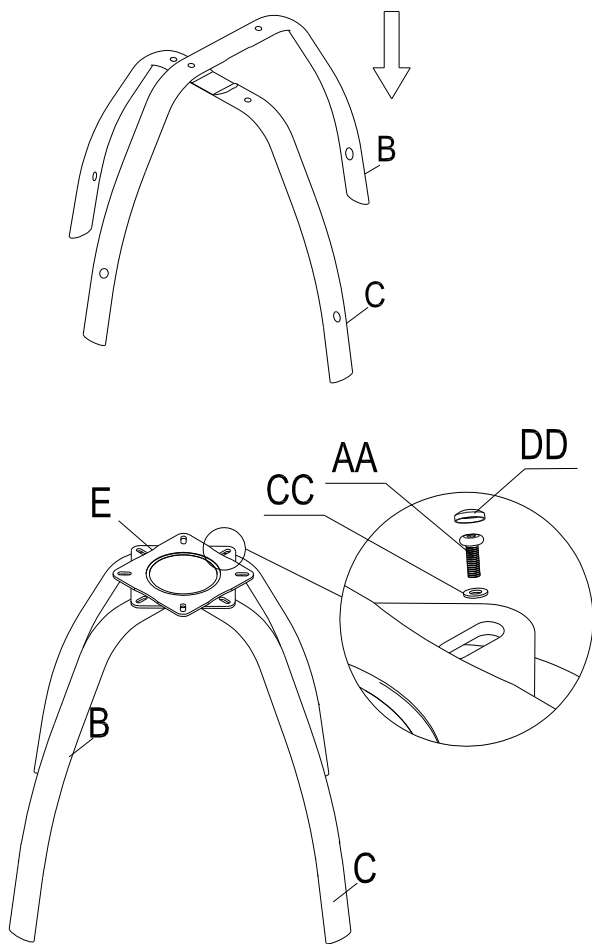
# Assembly

## 1 Attaching the ball bearing mechanism and chair legs

- Place upper leg (B) in a cross-x pattern over the lower leg (C).
- Attach the ball bearing mechanism (E) to the chair legs (B & C) by inserting four hex bolts (AA) and metal washers (CC).
- Tighten all the bolts completely by using the hex wrench (EE).
- Rotate the 2 plates of the ball bearing mechanism at a 45 degree angle, cover each bolt with the plastic bolt caps (DD).

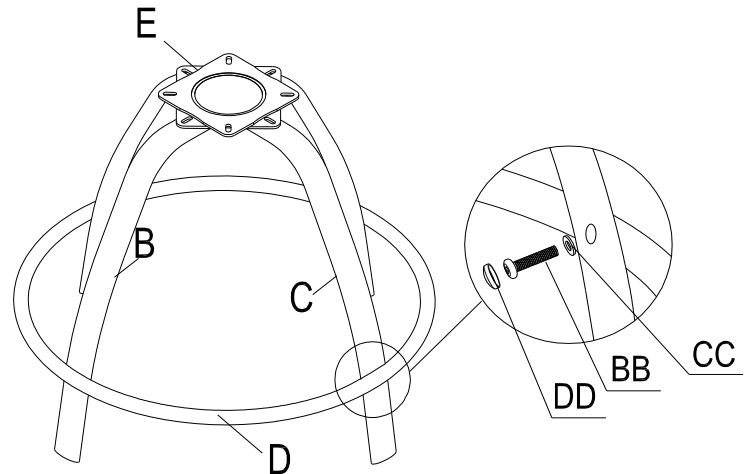


**NOTE:** Do not tighten the bolts fully until all parts are attached to the chair frame.



## 2 Attaching the legs and leg connector

- Attach the leg connector bracket (D) to the chair legs (B & C) by inserting four hex bolts (BB) and metal washers (CC).
- Tighten all the bolts completely by using the hex wrench (EE).
- Cover each bolt with the plastic bolt caps (DD).



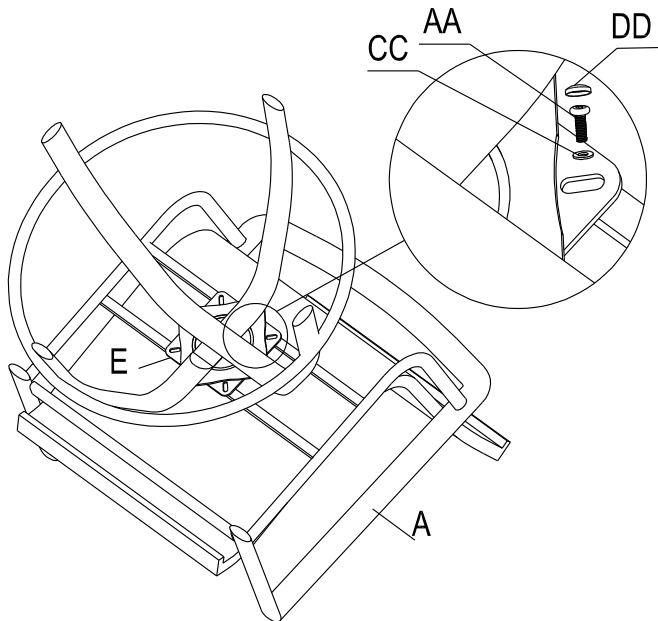
## Assembly (continued)

### 3 Attaching the ball bearing mechanism and chair frame

- Place the chair frame (A) face down on a flat, soft surface. Attach the ball bearing mechanism (E) to the chair frame (A) by inserting four hex bolts (AA) and metal washers (CC).
- Tighten all the bolts completely by using the hex wrench (EE).
- Rotate the 2 plates of the ball bearing mechanism at a 45 angle. Cover each bolt with the plastic bolt caps (DD).

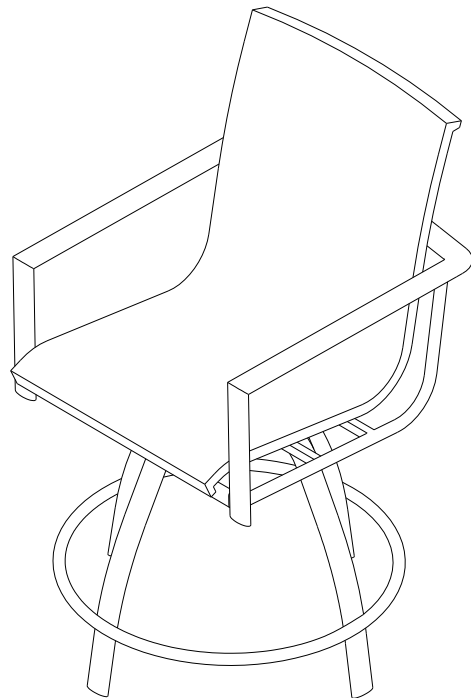


**NOTE:** Each bolt should be tightened a few revolutions at a time, alternating between bolts in a cross corner (X) pattern, to ensure your chair is level.



### 4 Completing the assembly

- Turn the chair into the upright position.



## Care and Cleaning

---

- Cover the furniture with outdoor furniture covers when not in use.
- Before using your table and chairs for the first time, wipe frames with a clean, dry cloth. For regular cleaning, wash with mild soap and water and rinse. Do not use abrasive materials or strong detergents.
- Before storing your outdoor furniture, drain all water that may have accumulated in or around the furniture frame. If not drained properly, water can cause freeze damage.





Questions, problems, missing parts? Before returning to the store,  
call Hampton Bay Customer Service  
8 a.m. - 6 p.m., EST, Monday-Friday

**1-855-HD-HAMPTON**

**HAMPTONBAY.COM**

Retain this manual for future use.