

## Farmhouse Apron Sink Stainless Steel Sink INSTALLATION INSTRUCTIONS

### General Recommendations:

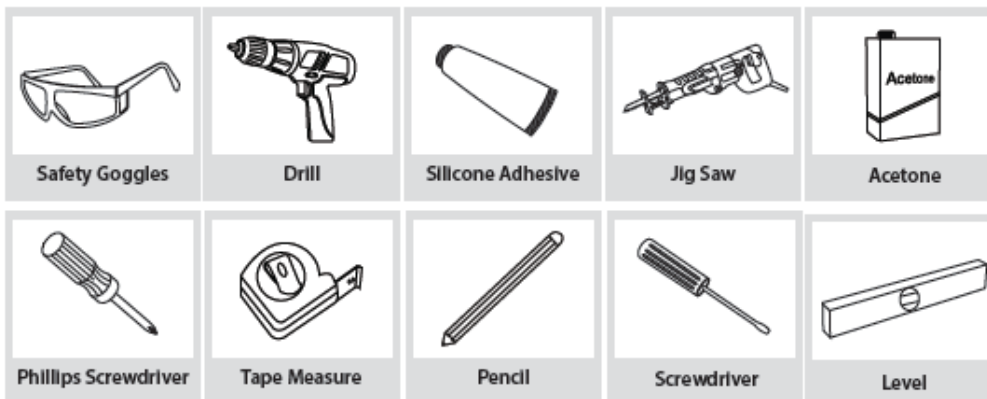
Read installation and maintenance instructions thoroughly before installing sink.

Be sure to use proper tools and always wear proper personal safety accessories for your protection.

### Prior to Installation:

- Inspect the sink prior to installation to make sure the sink has not been damaged during shipping
- Use the cut-out template provided.
- Additional floor and wall preparation may be required to avoid damaging the product
- Make sure to purchase the correct cabinet for your farmhouse sink. Farmhouse base cabinets should be 3" larger than the actual size of the sink
- Not recommended to be installed with laminate countertop

### Tools and Material Needed for Installation:



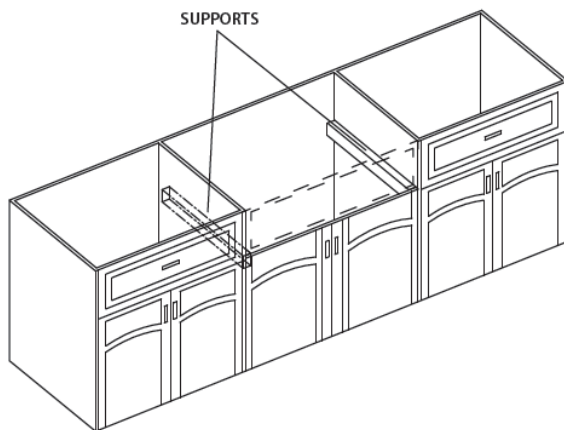
**NOTE:** Specialized tools may be necessary to install Stainless Steel Undermount sinks with countertop materials other than wood, marble, or granite.

## 1. Measure & Build Supports

- Measure the actual height of apron
- Build supports on inside of cabinet based on sink measurements

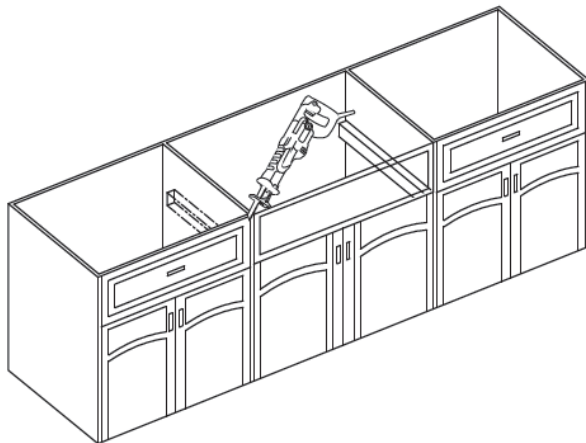
### Installer Tip: Support Options

- 1 1/4" Angle Irons
- (2) 2"x 4'
- 3/4" Plywood



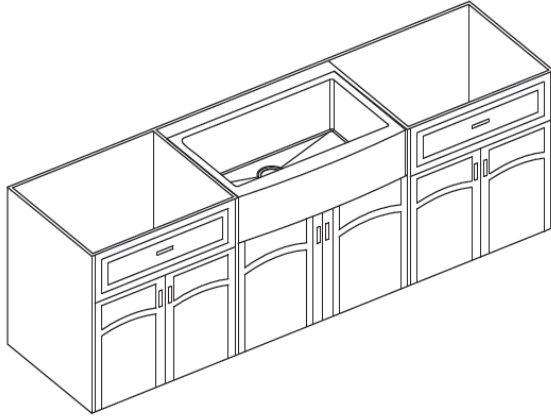
## 2. Cut Cabinet Front

- Measure height of apron front. Add 1/16" to the dimension when you mark base cabinet front cutout. Use jigsaw to cut.



### 3. Install Sink

- Place sink in opening. The weight of sink should be sustained by the built supports
- Make sure sink is leveled from front to back and side to side
- Uses silicone to fill in gaps where necessary

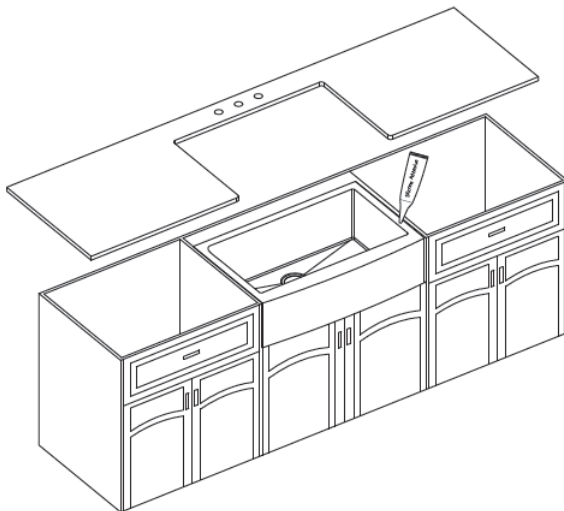


### 4. Cut Countertop

- Use a bead of silicone (or preferred adhesive) around the rim of the sink. Check the alignment of the sink to the cutout in the countertop.

Place countertop cutout hole over sink and press firmly

**Installer Tip:** Use acetone or denatured alcohol to remove any excess sealant



## 5. Installing Plumbing Fixtures

- Connect drain, trap to drain and water supply connections to the faucet according to manufacturer's instruction.
- Run water into sink and check for leaks

