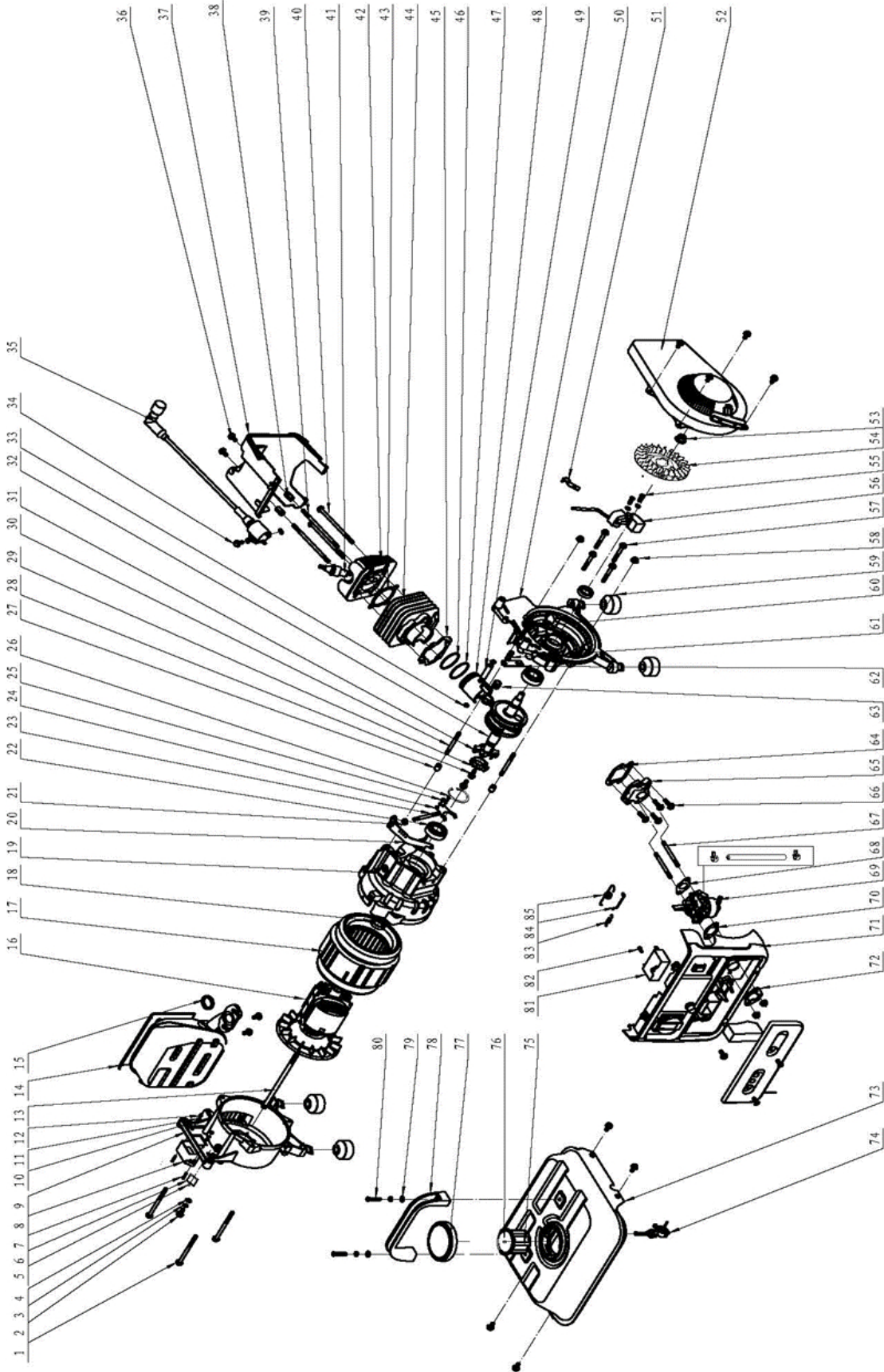


# EXPLODED VIEW AND PARTS LIST



Item	STOCK #	DESCRIPTION	QTY
1	PS50-001	Flange bolt M6x80	3
2	PS50-002	Flange bolt M6x10	2
3	PS50-003	Spring washer 6	7
4	PS50-004	Washer 6	3
5	PS50-005	Breaker	1
6	PS50-006	Tarpaulin	1
7	PS50-007	Bolt M3x16	2
8	PS50-008	DC receptacle	1
9	PS50-009	Rear cover	1
10	PS50-010	Washer 3	2
11	PS50-011	Spring washer 3	4
12	PS50-012	Nut M3	2
13	PS50-013	Flange bolt M8x160	1
15	PS50-014	Muffler	1
14	PS50-015	Muffler gasket	1
16	PS50-016	Alternator rotor	1
17	PS50-017	Alternator stator	1
18	PS50-018	Oil seal 20x30x7	2
19	PS50-019	Left crankcase	1
20	PS50-020	Governor arm	1
21	PS50-021	Oil seal 6x12x4	1
22	PS50-022	Bearing 6004	2
23	PS50-023	Governor shaft	1
24	PS50-024	Governor fork	1
25	PS50-025	Bolt M3x8	2
26	PS50-026	Hole circlip 42	1
27	PS50-027	Pin 10x7x14	2
28	PS50-028	Flange bolt M6x16	4
29	PS50-029	Collar bush	1
30	PS50-030	Stub AM6x50	2
31	PS50-031	Weight comp	1
32	PS50-032	Crankshaft assembly	1
33	PS50-033	Circlip	2
34	PS50-034	Flange bolt M6x16	2
35	PS50-035	CDI winding	1
36	PS50-036	Flange bolt M6*12	10
37	PS50-037	Head cover	1
38	PS50-038	Bolt M6x18	2
39	PS50-039	Stub AM6x100	2
40	PS50-040	Flange bolt M6x105	2
41	PS50-041	Spark plug	1
42	PS50-042	Cylinder cap	1
43	PS50-043	Cylinder cap gasket	1

Item	STOCK #	DESCRIPTION	QTY
44	PS50-044	Cylinder head	1
45	PS50-045	Cylinder gasket	1
46	PS50-046	First piston ring	1
47	PS50-047	Second piston ring	1
48	PS50-048	Piston	1
49	PS50-049	Piston pin	1
50	PS50-050	Right crankcase	1
51	PS50-051	Clamp	1
53	PS50-052	Recoil starter assembly	1
54	PS50-053	Flange nut M10*1.25	1
52	PS50-054	Flywheel	1
55	PS50-055	Bolt M6x16	2
56	PS50-056	Ignition coil assembly	1
57	PS50-057	Flange bolt M6x45	4
58	PS50-058	Nut M6	4
59	PS50-059	Absorber	4
60	PS50-060	Bolt M6x40	1
61	PS50-061	Compression spring	1
62	PS50-062	Supporting plate	1
63	PS50-063	Roller bearing 14x10x13	1
64	PS50-064	Intake valve gasket	1
65	PS50-065	Intake valve assembly	1
66	PS50-066	Flange bolt M6x18	4
67	PS50-067	Stub AM6x60	2
68	PS50-068	Intake gasket	1
69	PS50-069	Carburetor	1
70	PS50-070	Carburetor gasket B	1
71	PS50-071	Control panel	1
72	PS50-072	Carburetor gasket A	1
73	PS50-073	Fuel tank	1
74	PS50-074	Fuel switch	1
75	PS50-075	Fuel filter	1
76	PS50-076	Fuel cup	1
77	PS50-077	Fuel tank cap	1
78	PS50-078	Carrying handle	1
79	PS50-079	Washer 6	2
80	PS50-080	Bolt M6x30	2
81	PS50-081	Capacitor	1
82	PS50-082	Screw ST4.2x14	1
83	PS50-083	Tension spring	1
84	PS50-084	Rod link	1
85	PS50-085	Governor spring	1