



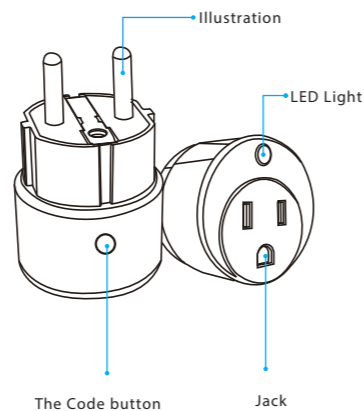
WI-FI SMART HOME INSTRUCTION

POWER PLUG



SHENZHEN NEO ELECTRONICS CO.,LTD

Product configuration



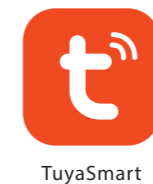
Specifications

Product agreement: WiFi-2.4G
 Wireless coverage: 45m
 RF Characteristic: 9.6/40/100kbps data rates
 RF mode: FSK(BFSK/GFSK)
 Power: 110-230V AC+/-10% , 50/60Hz
 Rated current: 10A
 Flame retardant grade: V-0
 Working temperature: 0℃ ~ 40℃ (32°F ~ 104°F)
 Operating humidity: 20% ~ 85%
 Storage temperature: 0℃ ~ 60℃ (32°F ~ 140°F)
 Storage humidity: 0% ~ 90%
 Support third-party control : Amazom alexa、 google Assistant、 IFTTT



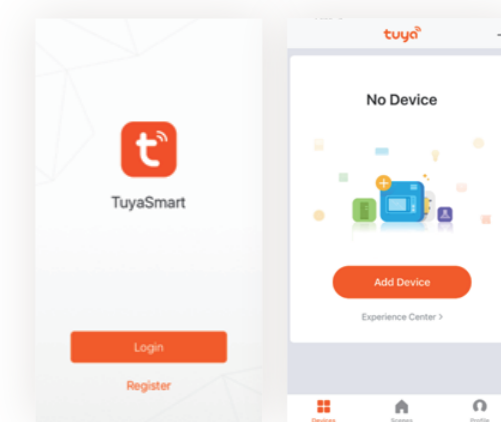
App download

1.Android phone: download "TuyaSmart" from GooglePlay.
 2.Iphone :download "TuyaSmart" from App Store.

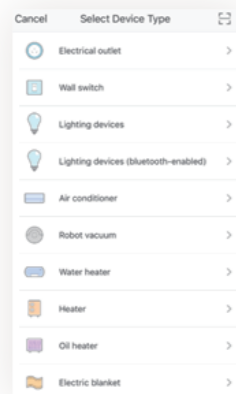


Add Device

1.Run "TuyaSmart"from you smartphone desktop.
 2.Register and login

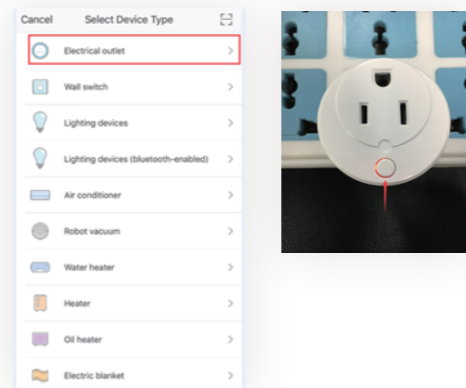


3.Choose the device that you want to add. Here take smart plug and water sensor for examples. Adding device by smart wifi or AP mode.

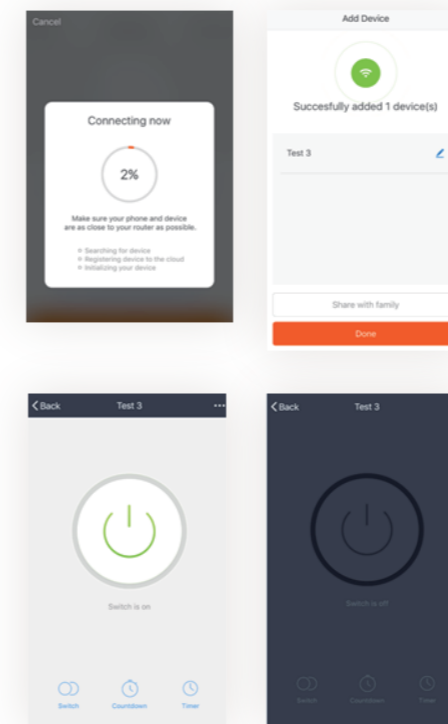
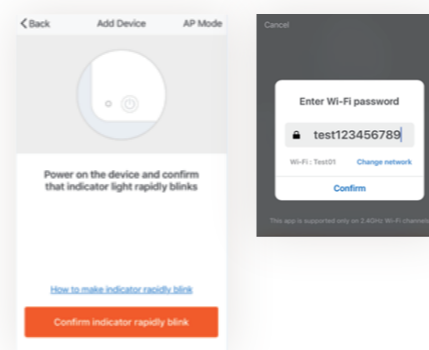


Power Plug:

1.plug into power, follow the step as follow:
 2.Choose"Electrical outlet"in the APP



3.Press and hold the ON/OFF button for 6s then release, the plug is waiting for network configuration while the indicator is flashing. Follow the steps in app to configure network.



Make Your Home Smarter



For more products please visit
www.szneo.com