

# STARLIKE<sup>®</sup> CRYSTAL

PATENTED

## 2 PART EPOXY MORTAR



One translucent grout for all colors of transparent and colored glass mosaic tile.

- ✓ MAKES GROUTS IMPERCEPTIBLE
- ✓ UNIFORM COLORS AND COMPACT
- ✓ ANTI-STAIN
- ✓ EASY MAINTENANCE



New patented formula.  
UV - Resistant attested by  
Modena and Reggio Emilia University.

# LITOKOL<sup>®</sup>

HI-PERFORMANCE BUILDING PRODUCTS

Made In Italy



the  
Tile Doctor

EXCLUSIVE DISTRIBUTOR FOR USA

Tile Doctor

[www.TileDoctor.com](http://www.TileDoctor.com)

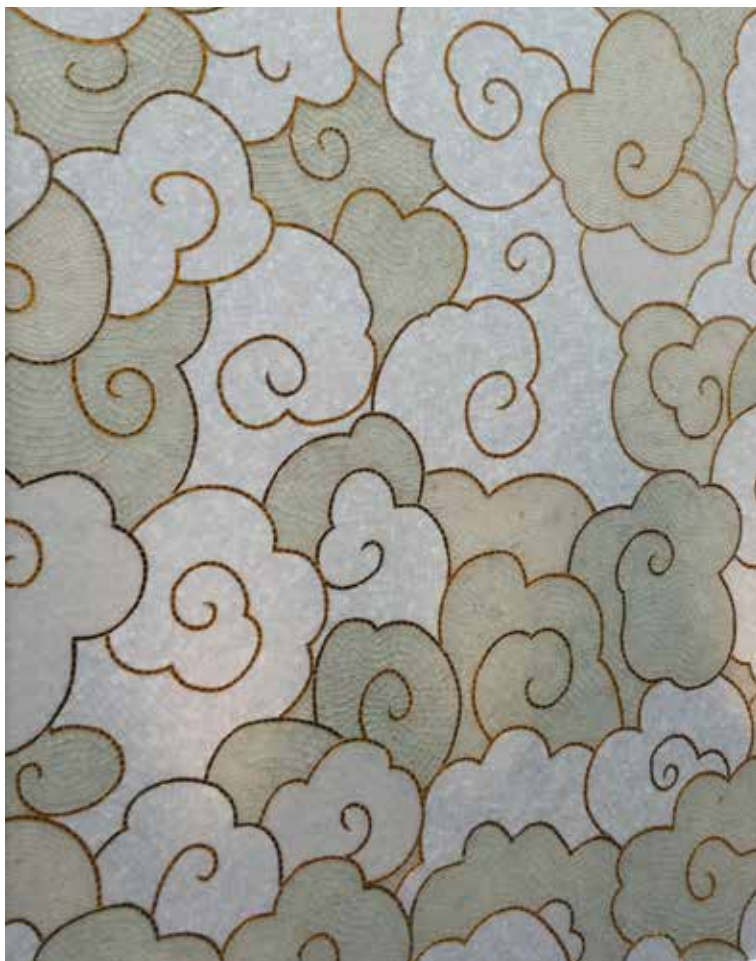
877-TileDoc (845-3362)

# Starlike® Crystal, the translucent sealant specially for vitreous and artistic mosaic grouting

---

- Allows the grouting to “**absorb**” the colour of the transparent glass tiles and to change according to their colour
- Translucent grouting has a **neutral tone that highlights the colours of artistic mosaics** without interfering with the composition
- Inert base sealant made of very fine grain glass micro-beads for a **smooth and easy to clean application**
- In the case of transparent glass mosaics mounted on paper, it is possible to create **backlit internal walls consisting of transparent substrates in glass or Plexiglas**.

In this case, fixing will be done with a suitable transparent cartridge adhesive.



Litokol's research latest innovative outcome in Starlike® range is Starlike® Crystal.

This new product comes from the understanding that mosaic tiles are made with a host of techniques and materials, determining an infinite variety of surfaces and aesthetic solutions.

Mosaic coverings or floors require high-quality grouting products which help this antique decoration technique stand out, where colour shades and laying techniques play a prominent role in implementing works of a rare beauty and value.

The team of researchers working in Litokol's Laboratory, have developed Starlike® Crystal, a new conception of translucent coloured grout that filters light.

## Simple application and cleaning

---

The special epoxy resin blend made of glass beads with a very fine particle size is the secret of product's fluidity that makes easy both the application and the cleaning steps, conferring smooth and compact appearance to the grout.

Starlike® Crystal keeps the aesthetic characteristics of the surfaces over time: it is non-absorbent, easy to clean, suitable even in case of environments having high humidity.

## Resistent to chemical contact and exposure to UV rays

---

Starlike® Crystal resists mechanical stress, chemical contact, exposure to UV rays and guarantees the durability of surfaces and their conservation over time, preserving the beauty of the mosaics and the living quality of the environments.

✓ SUITABLE FOR  
SWIMMING POOLS

