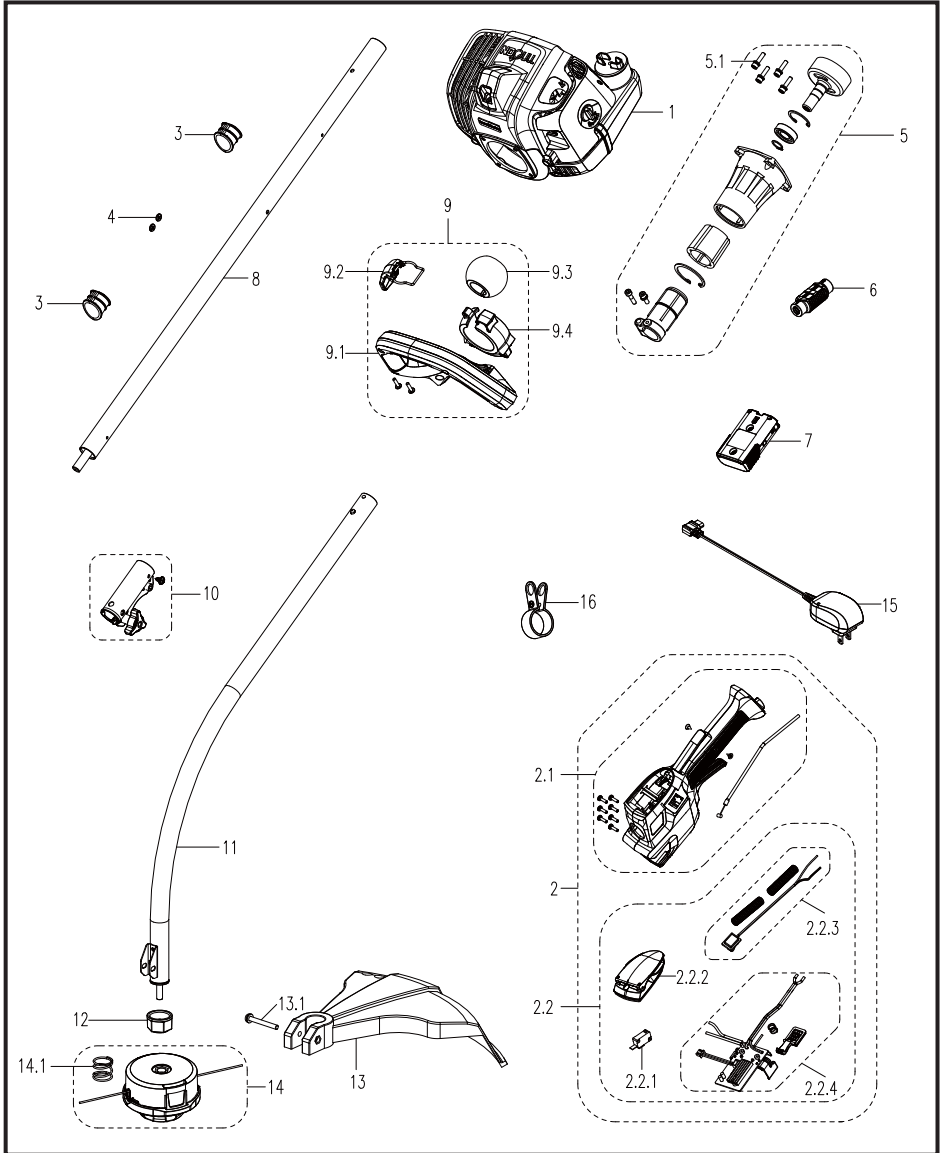


EXPLODED VIEW

NPTGCP2617A EXPLODED VIEW



PARTS LIST

NPTGCP2617A MANUAL PARTS LIST			
Key Number	Part Number	Description	Quantity
1	321001101	Cleva 26cc 2-Cycle Engine	1
2	321001102	Throttle-body & Starter Set	1
2.1	321001103	Throttle-body Set	1
2.2	321001104	Starter Set	1
2.2.1	321001105	Electric Switch	1
2.2.2	321001106	Starter Switch Assembly	1
2.2.3	321001107	Stop Switch Set	1
2.2.4	321001108	PCB Assembly	1
3	321001109	Handle Spacer	2
4	321001110	Cable Clamp	2
5	321001111	Clutch Assembly	1
5.1	321001112	Bolt	4
6	321001113	Wire Lock	1
7	321001114	7.2V Lithium-Ion Battery	1
8	321002101	Aluminum Upper Trimmer Shaft	1
9	321001116	Assist Handle Assembly	1
9.1	321001117	Assist Handle	1
9.2	321001118	Handle Clasp	1
9.3	321001119	Ball Joint	1
9.4	321001120	Ball Socket	1
10	321002102	Shaft Connection Sleeve	1
11	321002103	Aluminum Lower Trimmer Shaft	1
12	321002104	Cover Plate	1
13	321002105	Debris Guard	1
13.1	321002106	Bolt	1
14	321002107	Bump Feed Trimmer Head Assembly	1
14.1	321002108	Bump Feed Spool Spring	1
15	321001127	Charger	1
16	321001128	Shoulder Strap Clasp (Available Separately)	1

Replacement parts highlighted in grey are available for after sales purchase. Replacement of repair or internal parts should only be done by a qualified service professional. Please contact your authorized service dealer or Customer Service at 866-384-8432.