



Trailer Dolly

Instruction Manual & Parts Catalog

Model 70225



Read and understand this entire manual before assembling, installing, operating, or servicing this product.

SAVE THIS MANUAL

Copyright© 2012 by PGS, LLC. All rights reserved. No portion of this manual or any artwork contained herein may be reproduced in any shape or form without the express written consent of PGS, LLC. Due to continuing improvements, actual product may differ slightly from the product described herein. Tools required for assembly and maintenance may not be included.

IMPORTANT SAFETY INFORMATION

This is a **SAFETY ALERT** symbol.



It is used to alert you to potential personal injury hazards. Obey all safety messages that follow this symbol to avoid possible injury or death.



DANGER indicates a hazardous situation which, if not avoided, will result in death or injury.



WARNING indicates a hazardous situation which, if not avoided, could result in death or serious injury.



CAUTION indicates a hazardous situation which, if not avoided, could result in minor or moderate injury.



NOTICE indicates important information which, if not followed, may cause damage to equipment.

SAVE THIS MANUAL

Keep this manual for the safety warnings and precautions. The manual offers important information on how to assemble, use and maintain this product.

Write the product's model number and purchase date on the cover page of this manual.

Keep this manual (and your purchase receipt) in a safe place.

UNPACKING

The shipment should be thoroughly inspected as soon as it is received. The signed "bill of lading" is acknowledgement by the carrier of receipt in good condition or shipment covered by our invoice. For your own protection, if any of the goods called for on the bill of lading are shorted or damaged, do not accept them until the carrier makes a notation on the freight bill of the shorted or damaged goods.

Notify PGS, LLC immediately if any hidden loss or damage is discovered after receipt.

Definition of Symbols



WARNING concerning Risk of Eye Injury. Wear ANSI approved eye protection.



WARNING concerning Risk of Hearing Loss. Wear hearing protection.



IMPORTANT SAFETY INSTRUCTIONS



1. **Read and understand all safety warnings and instructions.** Failure to follow the warnings and instructions may result in serious injury or death. Save all warnings and instructions for future reference.

2. **Personal and Work Area Safety**



A. **Always wear ANSI approved safety goggles.**



B. **Always wear hearing protection when working in noisy environments.** Prolonged exposure to high intensity noise can cause hearing loss.



C. **Use safety equipment.** Safety shoes, hard hat and work gloves must be used for applicable conditions.


D. **Dress appropriately.** Never wear loose fitting clothing or jewelry when working. Contain long hair, and keep hair, clothing and gloves away from moving parts.

E. **Use common sense when working.** Stay alert and concentrate when assembling and using the Trailer Dolly. Never work while under the influence of alcohol, drugs or medications.

Personal and Work Area Safety (continued)

F. While assembling and using the Trailer Dolly keep work area clean and well lighted. Keep spectators and children out of the work area.

3. Use of the Trailer Dolly

A.  **WARNING** Do not exceed the Trailer Dolly's 600 Lbs. maximum load capacity.

B. Always make sure that the loaded trailer being transported is chocked properly when being connected and disconnected from the Trailer Dolly.

C. Make sure that the trailer tongue is securely connected to the Trailer Dolly hitch ball.

D. Never leave the Trailer Dolly unattended while under load.

E. Only use the Trailer Dolly on a flat, level, solid surface where the load can be transferred safely. Take safety precautions to prevent unsafe movement of the trailer once it is connected to the Trailer Dolly.

F. Always keep arms, feet and legs away from under the trailer when hitching, unhitching or moving the trailer. Keep spectators away when using the Trailer Dolly.

G. **Be aware of the danger of “dynamic loading”.** This situation arises when a load is dropped onto the Trailer Dolly, resulting in a short term excessive load. Dynamic loading can result in damage and failure of the Trailer Dolly and/or trailer tongue, and personal injury to the person using the Trailer Dolly.

H. Before each use, check the Trailer Dolly to make sure all hardware is tightly secured. Check for damaged or worn parts; never

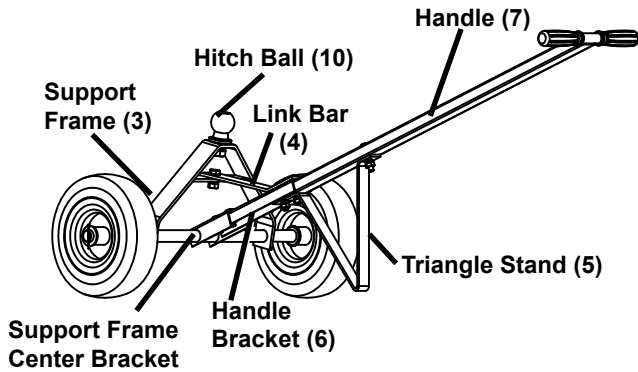
use a damaged Trailer Dolly. Make sure tires are properly inflated.

Keep in mind that the warnings previously discussed cannot cover all possible events and circumstances. It is important that the person loading/unloading and using this product use common sense at all times.

PGS LLC is not responsible for the attachment or the installation of this product. The attachment of this product is critical and beyond the control of PGS LLC. It neither guarantees, nor will it be liable for any damage resulting from its attachment or improper use.

Limited Warranty. PGS LLC warrants to the original retail purchaser that the product is free of defects in material and workmanship at the time of shipment. This product is warranted for 90 days from the date of purchase. This warranty is expressly in lieu of all other warranties, express or implied. Proof of purchase is required for warranty transactions; a copy of the original invoice or sales receipt is required.

Assembling the Trailer Dolly



1. Refer to illustration above and to the Assembly Diagram at end of this manual.

2. Set out the Support Frame (3). Attach Hitch Ball (10) to top of Support Frame, using Nut (11) and Spring Washer (12).

3. Note how lower end of Handle (7) fits inside Handle Bracket (6), which fits inside center bracket of Support Frame. First connect Handle Bracket (6) to center bracket of Support Frame (3) using Bolts (22), Flat Washers (18), and Nuts (20)

4. Next, connect front part of Link Bar (4) to horizontal crossbrace of Support Frame (3) using Bolt (13), Flat Washer (14), and Nut (16).

5. Connect back part of Link Bar (4) to Handle Bracket (6) using one Bolt (17), one Bolt (21), Flat Washers (18) and Nuts (20). Only hand tighten Nuts as Nuts will need to be removed when assembling Handle (7) and Triangle Stand (5).

6. Now position Handle (7) inside Handle Bracket (6). Position Triangle Stand (5) underneath Handle (7) and tighten both in place using the above hardware mentioned in #5 above, and use one more Bolt (21), Flat Washer (18) and Nut (20) to attach another end of Triangle Stand (5) to Handle (7).

7. Slide on Wheel (1) at each end of axle;

add Washer (2) to each end of axle and secure Wheels in place by inserting Split Pins (9) through the axle.

7. With assembly complete, tighten all hardware and roll the Trailer Dolly to make sure it functions properly.

Using the Trailer Dolly

1. **Make sure loaded trailer's load capacity does not exceed 600 Lbs.**

2. Chock tires of the loaded trailer to be transported. Loaded trailer must be on a flat, level, solid surface.

3. Move the Trailer Dolly into place and connect the trailer tongue to the Trailer Dolly Hitch Ball.

WARNING Always keep arms, feet and legs away from under the trailer when hitching, unhitching or moving the trailer.

4. Once the Trailer Dolly is securely connected to the trailer, remove trailer's wheel chocks.

5. With hands on the Handle (7), slowly roll and maneuver the trailer to the desired location.

6. Trailer's wheels must be chocked again once the trailer is in the new location. Never leave the Trailer Dolly unattended while it is under load.

7. Unhitch the Trailer Dolly and move it away from the trailer.

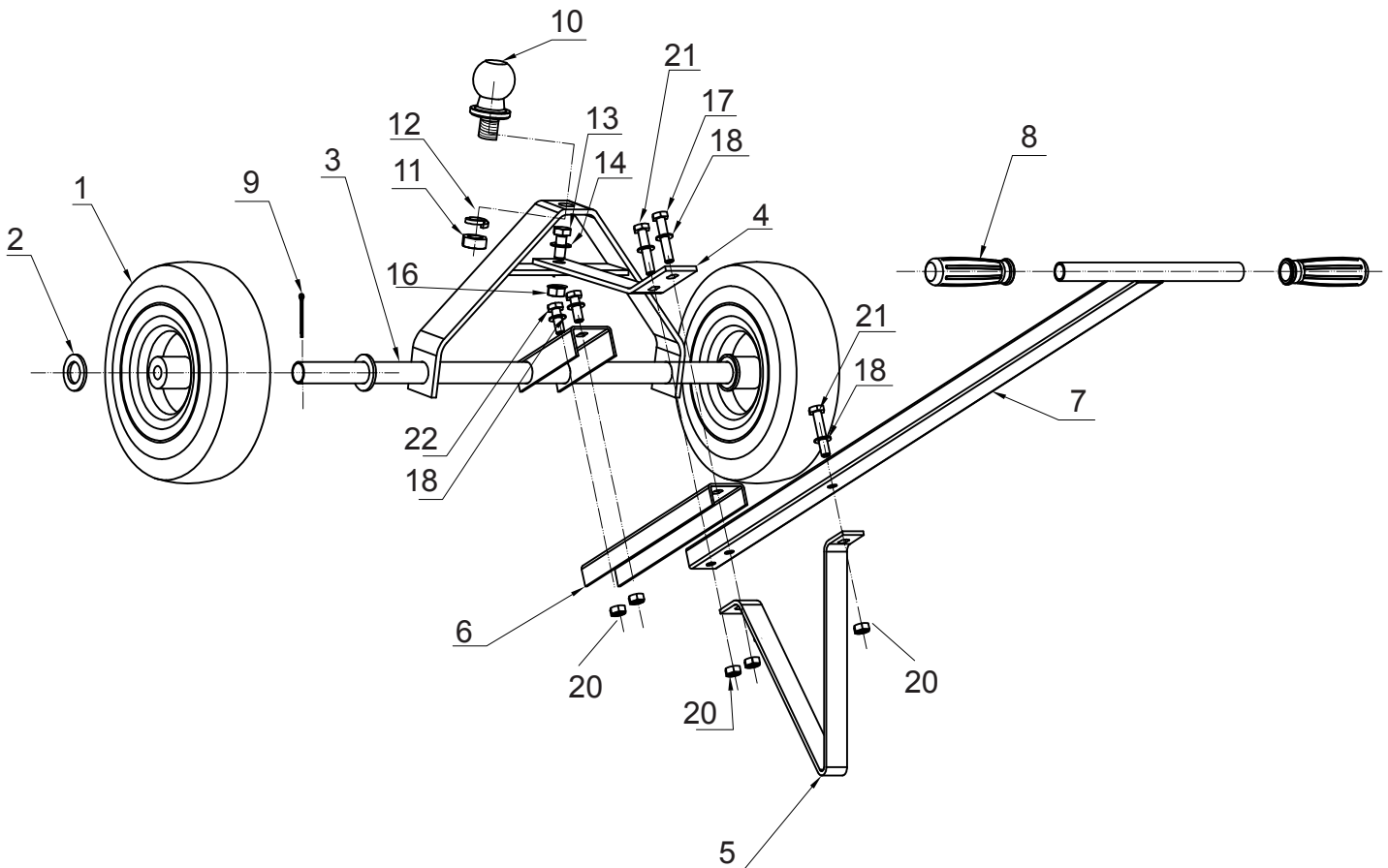
SPECIFICATIONS

Maximum Load Capacity	600 Lbs.
Hitch Ball	1-7/8" Diameter
Hitch Ball Shank Diameter	3/4"
Tires	12" x 4" Knobby Tread
Finish	Powder Coated

Parts List

Part #	Description	Qty	Part #	Description	Qty
1	Wheel	2	11	Nut 3/4"	1
2	Washer	2	12	Spring Washer 3/4"	1
3	Support Frame	1	13	Bolt M12x30	1
4	Link Bar	1	14	Flat Washer 12	1
5	Triangle Stand	1	16	Lock Nut M12	1
6	Handle Bracket	1	17	Bolt M10x60	1
7	Handle	1	18	Flat Washer 10	5
8	Grip	2	20	Lock Nut M10	5
9	Split Pin	2	21	Bolt M10x50	2
10	Hitch Ball, 1-7/8"	1	22	Bolt M10x25	2

Assembly Diagram



Note: The Parts List and Assembly Diagram is provided as a reference tool only. Some parts are listed and shown for illustration purposes only, and are not available as replacement parts. All repairs to this tool (including replacing parts) should only be done by a qualified service technician.