

INSTALLING SINGLE CURTAIN RODS

TABLE OF CONTENTS

| | |
|--|----------|
| Short Single Rods | 1 |
| 18-36, 28-48, 36-66 IN (46-92, 71-122, 92-168 CM) | |
| Medium Single Rods | 3 |
| 36-72, 48-84, 48-88 IN (91-182, 122-213, 122-224 CM) | |
| Long Single Rods | 5 |
| 36-68, 42-120, 44-120, 66-120, 77-120, 88-120, 72-144, 88-144, 120-170, 120-180 IN (91-172, 107-304, 112-304, 168-304, 195-304, 224-304, 183-366, 224-366, 224-366, 304-431, 304-457 CM) | |

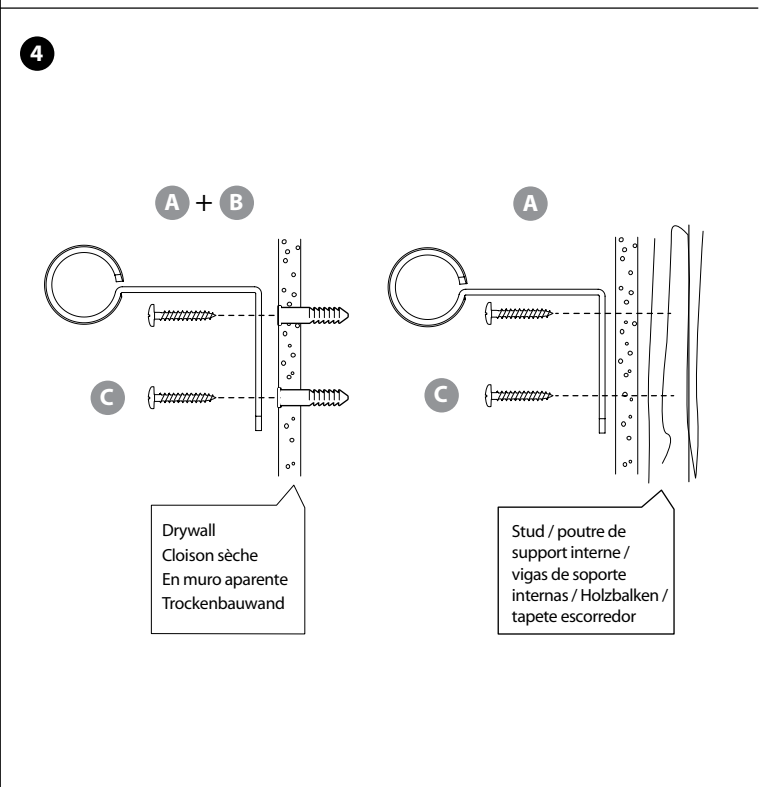
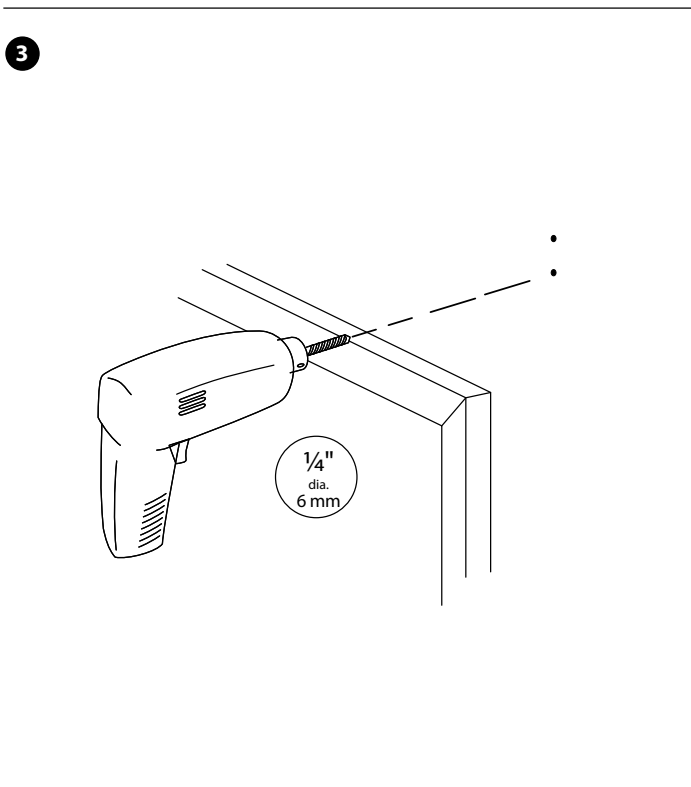
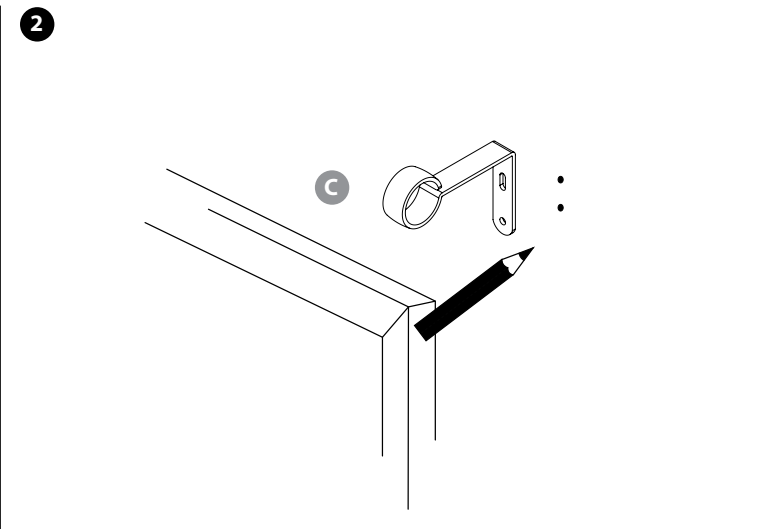
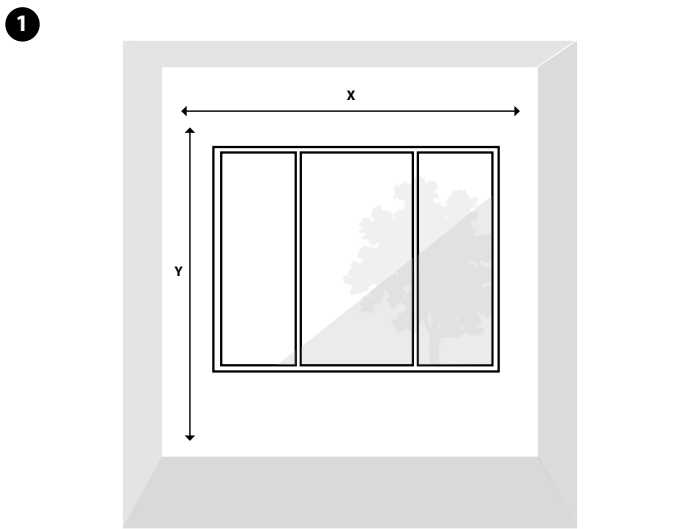
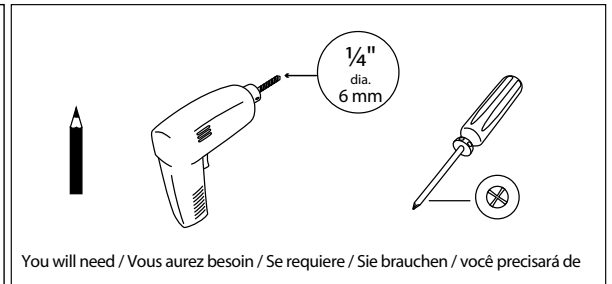
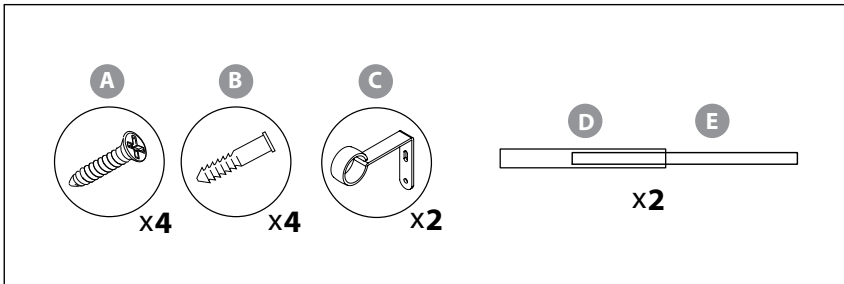
We get it, installing a curtain rod can be a little tricky.
See our step by step video to help you through the process.



[watch the video](#)



**SINGLE (SHORT)
ROD SET INSTRUCTIONS**
18-36, 28-48, 36-66 IN
(46 - 92, 71 - 122, 92 - 168 cm)





SINGLE (SHORT) ROD SET INSTRUCTIONS

18-36, 28-48, 36-66 IN

(46 - 92, 71 - 122, 92 - 168 cm)

MODE D'EMPLOI TRINGLE SIMPLE

INSTRUCCIONES PARA UNA VARILLA INDIVIDUAL

MONTAGEANLEITUNG

GARDINENSTANGE SET (EINFACH), KURZ

CONJUNTO DE VARÃO, CURTO

umbra.com

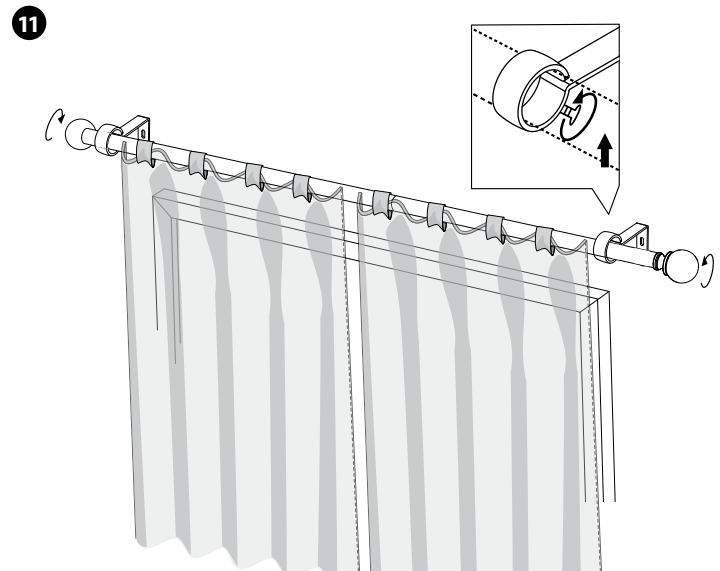
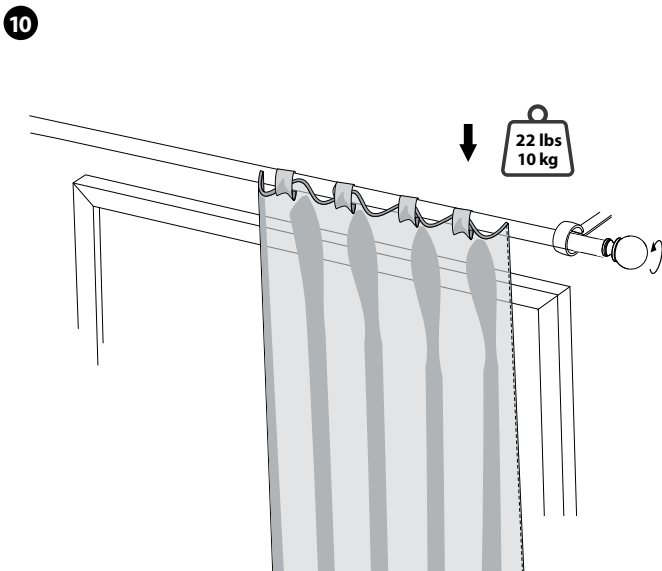
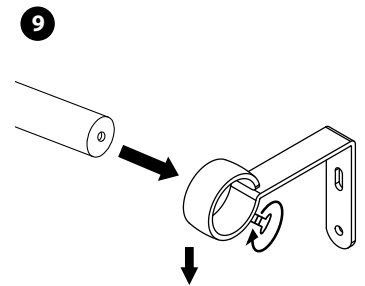
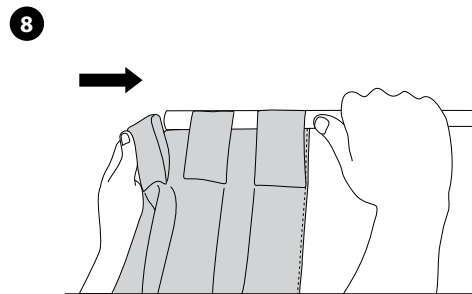
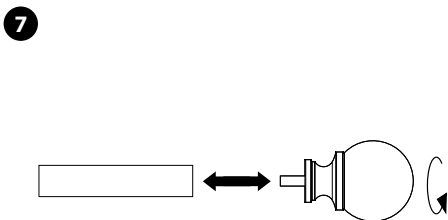
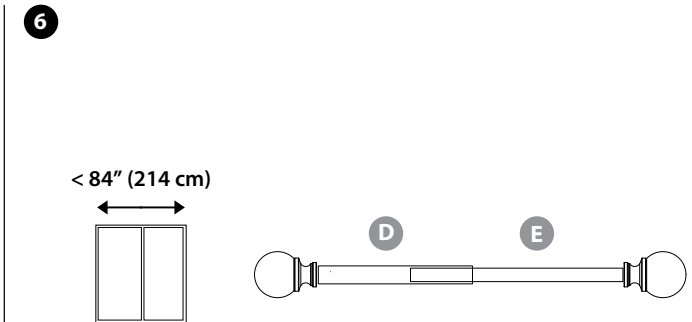
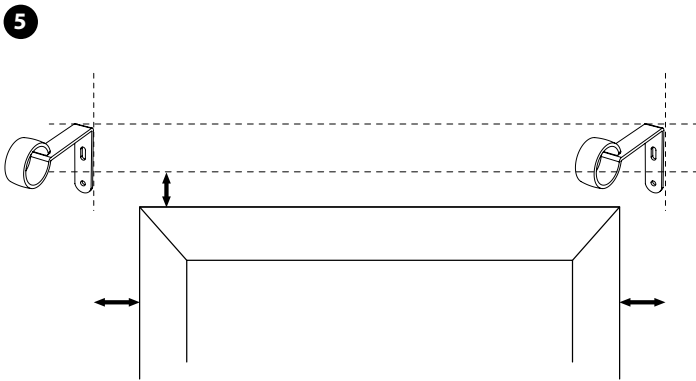
EN Care Instructions: Clean with a soft cloth. Do not use abrasive cleaning agents, solvents or polishes.

FR Instructions d'entretien : Nettoyez avec un chiffon doux et humide. N'utilisez pas de produits nettoyants abrasifs, de solvants ou de produits à polir.

ES Instrucciones para el mantenimiento Limpie con un paño suave. No utilice limpiadores abrasivos, solventes o pulidores.

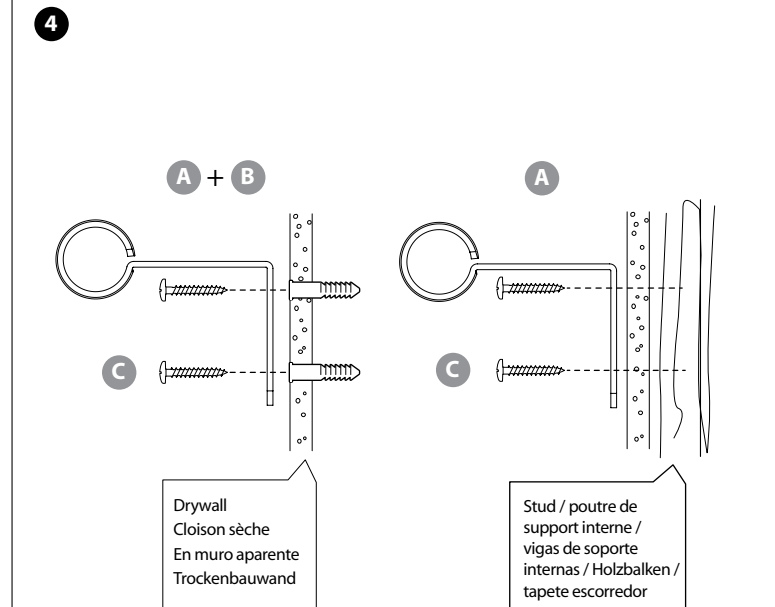
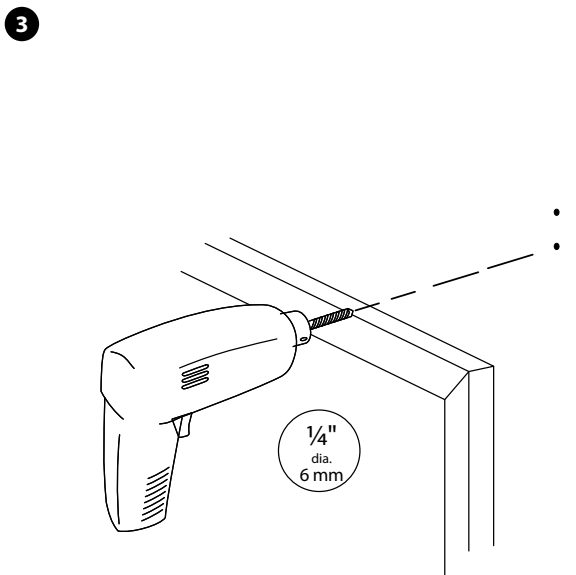
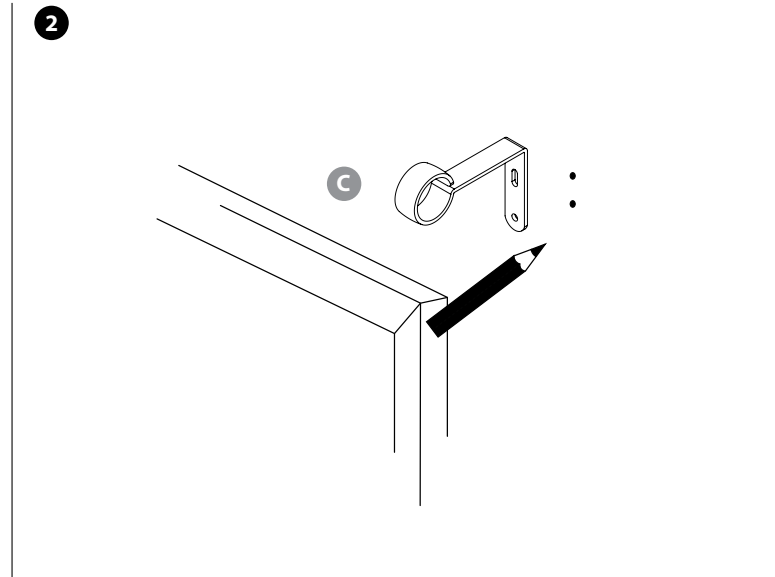
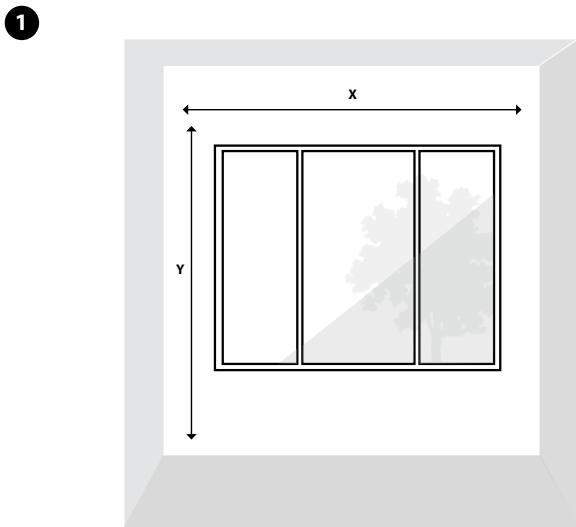
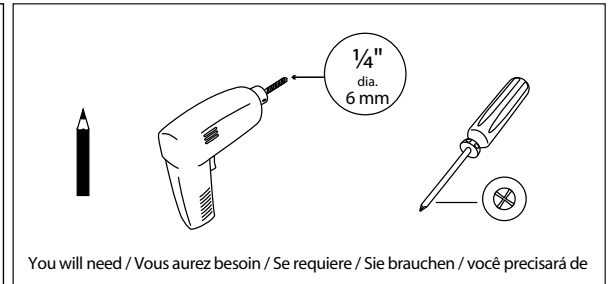
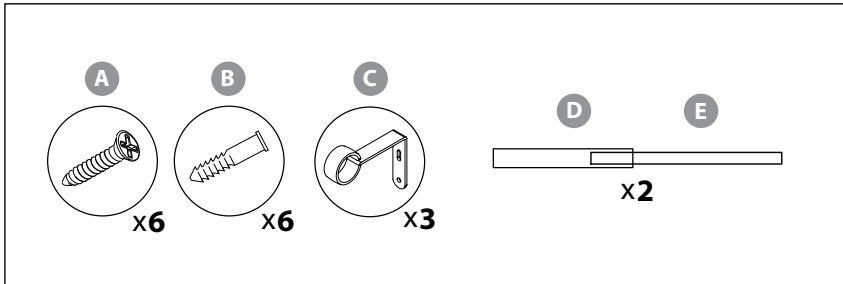
DE Pflegehinweise: Reinigung mit einem weichen Tuch. Verwenden Sie keine scheuernden Reinigungsmittel, Lösungsmittel oder Reiniger.

PT Instruções de limpeza: Limpar com um pano macio. Não utilizar agentes abrasivos, solventes ou polidores.





**SINGLE (MEDIUM)
ROD SET INSTRUCTIONS**
36-72, 48-84, 48-88 IN
(91-182, 122-213, 122-224 cm)





**SINGLE (MEDIUM)
 ROD SET INSTRUCTIONS**
 36-72, 48-84, 48-88 IN
 (91-182, 122-213, 122-224 cm)
MODE D'EMPLOI TRINGLE SIMPLE
INSTRUCCIONES PARA UNA VARILLA INDIVIDUAL
MONTAGEANLEITUNG
GARDINENSTANGE SET (EINFACH), KURZ
CONJUNTO DE VARÃO, CURTO
 Umbra.com

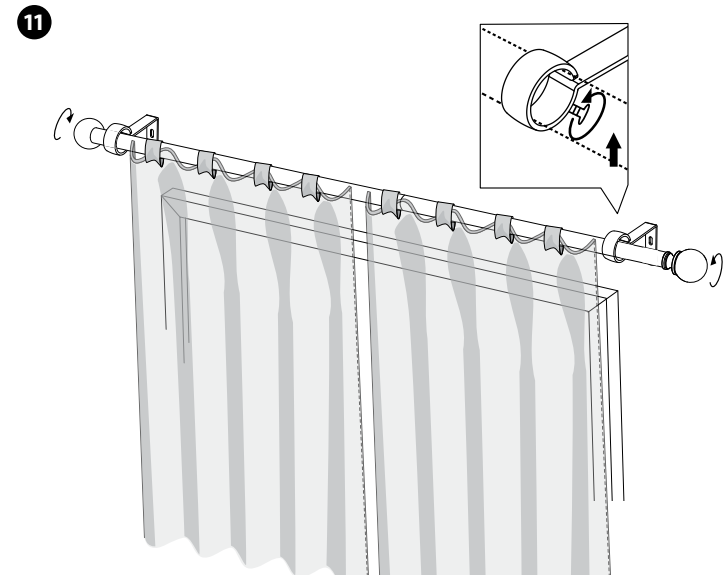
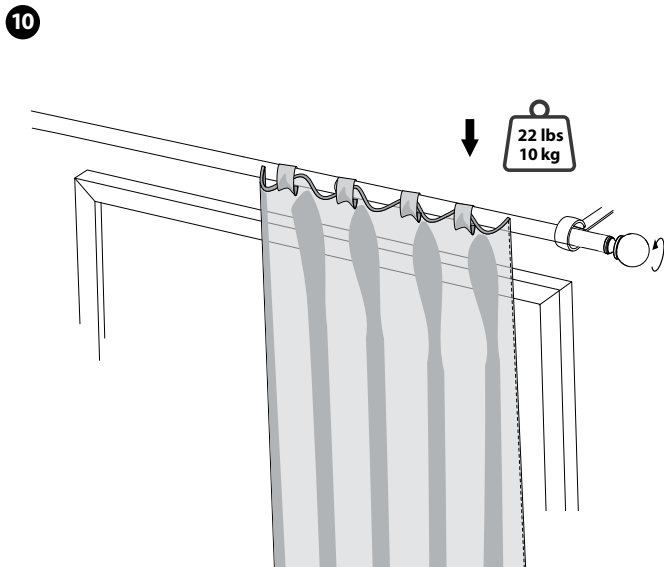
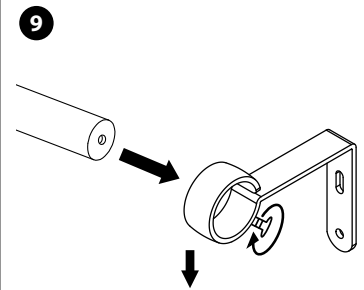
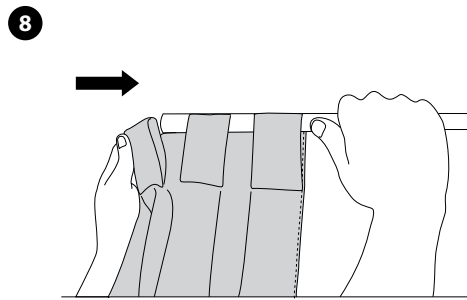
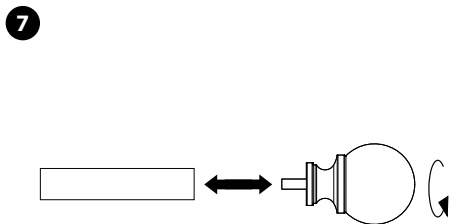
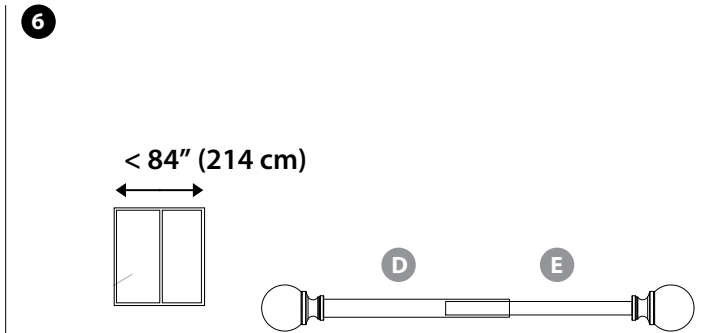
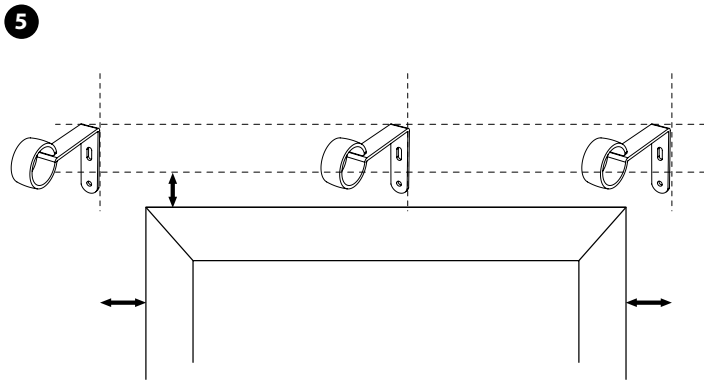
EN Care Instructions: Clean with a soft cloth. Do not use abrasive cleaning agents, solvents or polishes.

FR Instructions d'entretien : Nettoyez avec un chiffon doux et humide. N'utilisez pas de produits nettoyants abrasifs, de solvants ou de produits à polir.

ES Instrucciones para el mantenimiento
 Limpie con un paño suave. No utilice limpiadores abrasivos, solventes o pulidores.

DE Pflegehinweise: Reinigung mit einem weichen Tuch. Verwenden Sie keine scheuernden Reinigungsmittel, Lösungsmittel oder Reiniger.

PT Instruções de limpeza: Limpar com um pano macio. Não utilizar agentes abrasivos, solventes ou polidores.





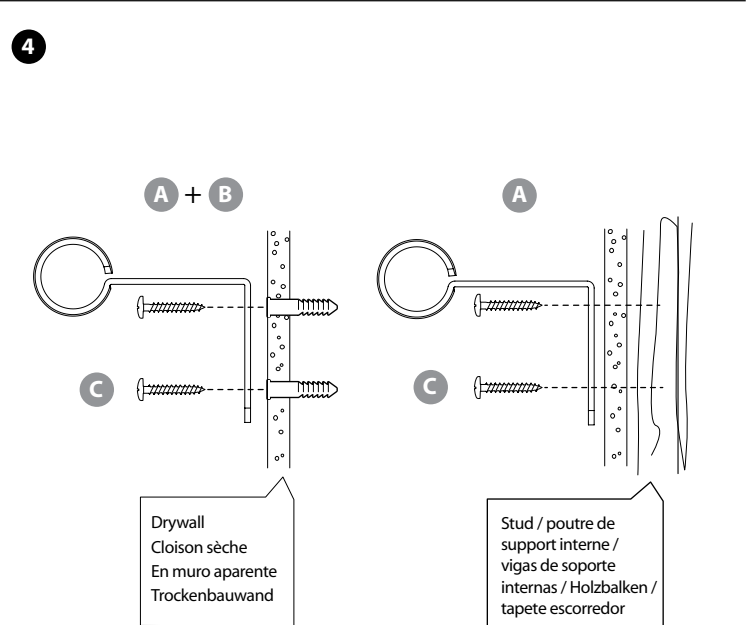
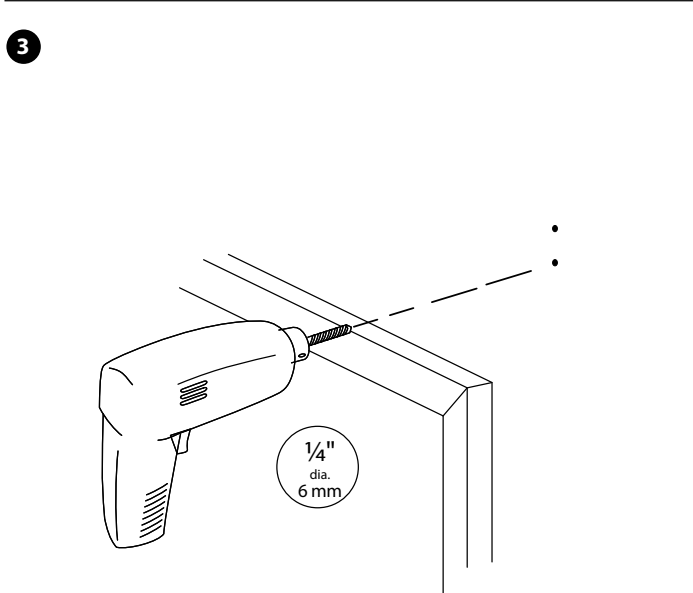
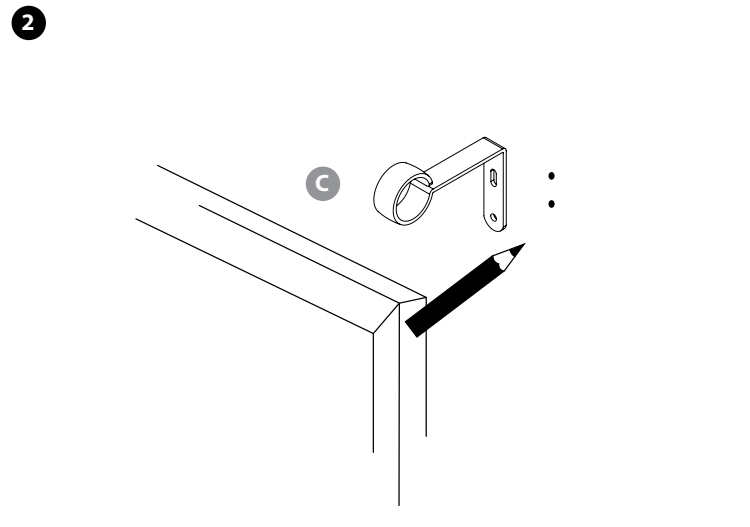
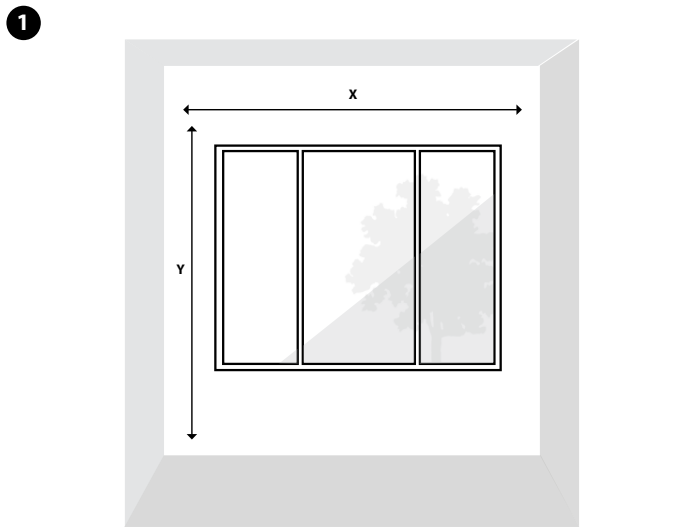
SINGLE (LONG)

ROD SET INSTRUCTIONS

36-68, 42-120, 44-120, 66-120, 77-120, 88-120, 72-144, 88-144, 120-170, 120-180 IN
(91-172, 107-304, 112-304, 168-304, 195-304, 224-304, 183-366, 224-366, 304-431, 304-457 cm)

Diagram showing parts A (screw), B (washer), C (hook), D (rod), E (washer), and F (hook) with quantities: A x6, B x6, C x3, D x3, E x3, F x3. Tools shown include a pencil, a power drill, and a screwdriver. A callout indicates a 1/4" dia. 6 mm drill bit.

You will need / Vous aurez besoin / Se requiere / Sie brauchen / você precisará de





SINGLE (LONG)

ROD SET INSTRUCTIONS

36-68, 42-120, 44-120, 66-120, 77-120, 88-120, 72-144, 88-144, 120-170, 120-180 IN
(91-172, 107-304, 112-304, 168-304, 195-304, 224-304, 183-366, 224-366, 304-431, 304-457 cm)

MODE D'EMPLOI TRINGLE SIMPLE

INSTRUCCIONES PARA UNA VARILLA INDIVIDUAL

MONTAGEANLEITUNG

GARDINENSTANGE SET (EINFACH), KURZ

CONJUNTO DE VARÃO, CURTO

Umbra.com

EN Care Instructions: Clean with a soft cloth. Do not use abrasive cleaning agents, solvents or polishes.

FR Instructions d'entretien : Nettoyez avec un chiffon doux et humide. N'utilisez pas de produits nettoyants abrasifs, de solvants ou de produits à polir.

ES Instrucciones para el mantenimiento
Limpie con un paño suave. No utilice limpiadores abrasivos, solventes o pulidores.

DE Pflegehinweise: Reinigung mit einem weichen Tuch. Verwenden Sie keine scheuernden Reinigungsmittel, Lösungsmittel oder Reiniger.

PT Instruções de limpeza: Limpar com um pano macio. Não utilizar agentes abrasivos, solventes ou polidores.

