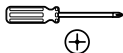


Item # 1002 782 614

Model # 9235936

**EVERBILT****Use and Care Guide**  
Double Magnetic Catch

## TOOLS REQUIRED



Phillips screwdriver

## PACKAGE CONTENTS



A - Catch x 1



B - Plate x 2



C - Catch Screw x 3

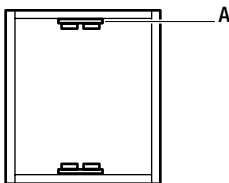


D - Plate Screw x 2

## Installation

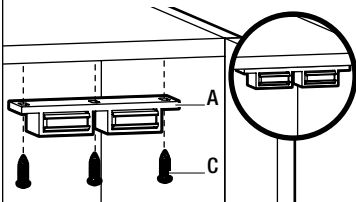
### 1 DETERMINING THE INSTALLATION LOCATION

- You can attach the catch (A) on the top or bottom of the cabinet, in the center position.



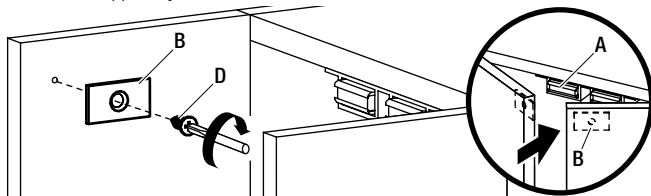
### 2 INSTALLING THE CATCH

- Use the catch screws (C) to attach the catch (A) to your chosen installation location.



### 3 INSTALLING THE PLATES

- Attach the plates (B) to the cabinet doors using two plate screws (D). Ensure that each plate (B) is aligned with the catch (A) when you close the cabinet doors.



## Warranty

Subject to the terms of this warranty, the Manufacturer warrants to the original consumer purchaser that the product will be free from defects in material and workmanship. If the product does not comply with this warranty, the Manufacturer will repair or replace the product or, at the Manufacturer's option, refund the purchase price. Repair, replacement, or refund of the original purchase price is your sole remedy under this or any other warranty on the product, whether expressed or implied. For additional details and questions, please contact Everbilt Customer Service at 1-800-305-1726.