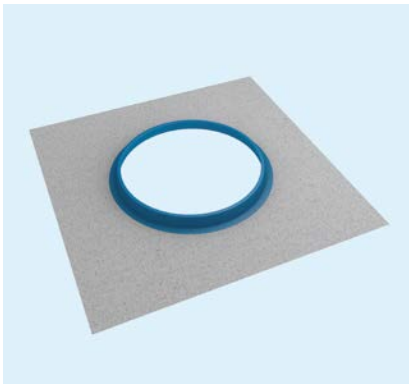


Installation/Usage

wedi Subliner Dry Valve Sealing Collars

| Waterproofing Shower and Wet Area System



wedi Subliner Dry Mixing Valve Flexi Collar
wedi Part Number: US5000000
5 in. diameter



wedi Subliner Dry Flexi Collar
wedi Part Number: US5000033
4 $\frac{3}{4}$ in. x 4 $\frac{3}{4}$
for sealing around $\frac{1}{2}$ in. to $\frac{3}{4}$ in.
shower pipe protrusions

wedi Subliner Dry Valve Sealing Collars are applied over suitable surfaces (substrates also generally suitable for tile) using cement based tile adhesive and a $\frac{3}{16}$ " x $\frac{1}{4}$ " or $\frac{1}{4}$ " x $\frac{1}{4}$ " notched tile adhesive trowel.

The sealing tape of the collar is pressed flat into the notch trowel combed tile adhesive bed using the flat side of the tile adhesive trowel or a rubber or wooden float.

Air pockets must be removed from under the sealing tape corner using trowel or float.

In wet areas such as showers, a joint sealant such as wedi joint sealant is applied over the corner tape seams to bar water from migrating below the sealing tape through the tile adhesive.

Tiling can commence once the tile adhesive has initially hardened/cured.

The product is not used in areas with water pressure/standing water.