



INSTALLATION

PIONEER INDUSTRIES, INC.
 3325 S. Garfield Ave.
 Commerce, CA 90040
 (800) 338-9468
 www.pioneerind.com

Tools:



Adjustable Wrench



Plumbers Putty



Teflon Tape



Rags

Model Number: 4MO100T, 4MO110T, 4MO200T, 4MO300T, 4MO304T, 4MO310T, 4MO400T

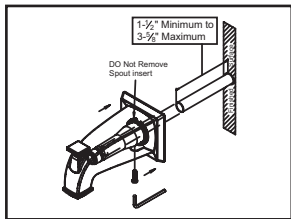
Warnings and Notes:

Check with local plumbing code requirements before installation.
 This product should be installed by a local listed plumber.
Do not use plumbers putty on threads.

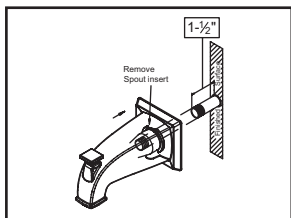


Installation Steps:

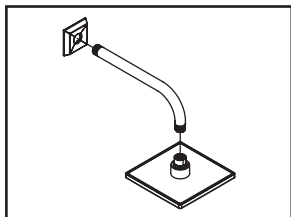
Single Handle Tub And Shower Trim Set



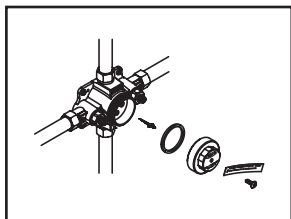
(1) For slip-fit Installation: The 1/2" nominal copper tube must be cut with a minimum length of 2-11/16" to a maximum length of 3-1/16" from tub or finished wall. Then end of copper tube should be chamfered free of any burrs to prevent cutting or nicking O-ring inside the spout. The outside surface may be sanded free from nicks and scratches. Press and twist the spout over copper tube till flush with tube or finished wall, tighten set screw but do not overtighten.



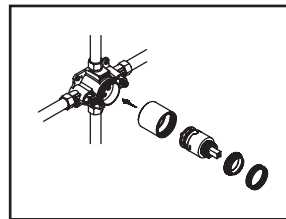
(2) For IPS Installation:- The 1/2" threaded pipe nipple must be kept with a minimum length 1-9/16" to maximum length of 1-13/16". Remove the octagonal nut inside the spout by using nose pliers. Apply Teflon tape at the threaded connection if necessary. Screw tub spout onto pipe nipple and tighten by strap wrench.



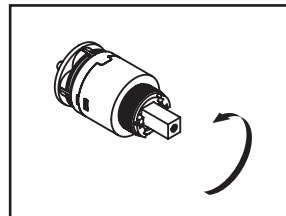
(3) Remove temporary nipple from the shower elbow. Use silicon to caulk the back of the shower arm flange. Slide the shower arm flange over the shower arm. Apply the Teflon tape on the both threaded ends of shower arm and install the shower arm to the shower elbow. Carefully tighten with a clean strap wrench. Press the shower arm flange against the finished wall. Flush out the system. Thread the showerhead to the shower arm.



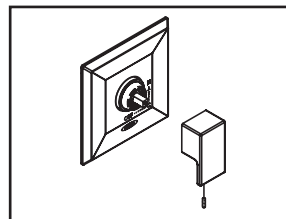
(4) Remove test cap with the help of 1-11/32" socket, relive the water pssure to ensure all the debris are flushed out of the system.



(5) Thread sleeve to the valve body. Ensure to install cartridge in position that cold water flows first and two notches underneath of the cartridge seat properly in the valve body. Hold the cartridge, thread and tighten retainer nut to sleeve. Thread retainer cap to retainer nut.



(6) For back to back installation:- Rotate the cartridge 180 Degree. Ensure 'B-B UP' symbol on the cartridge is on the top. Follow the instruction on (5) to install sleeve, retainer nut and retainer cap.



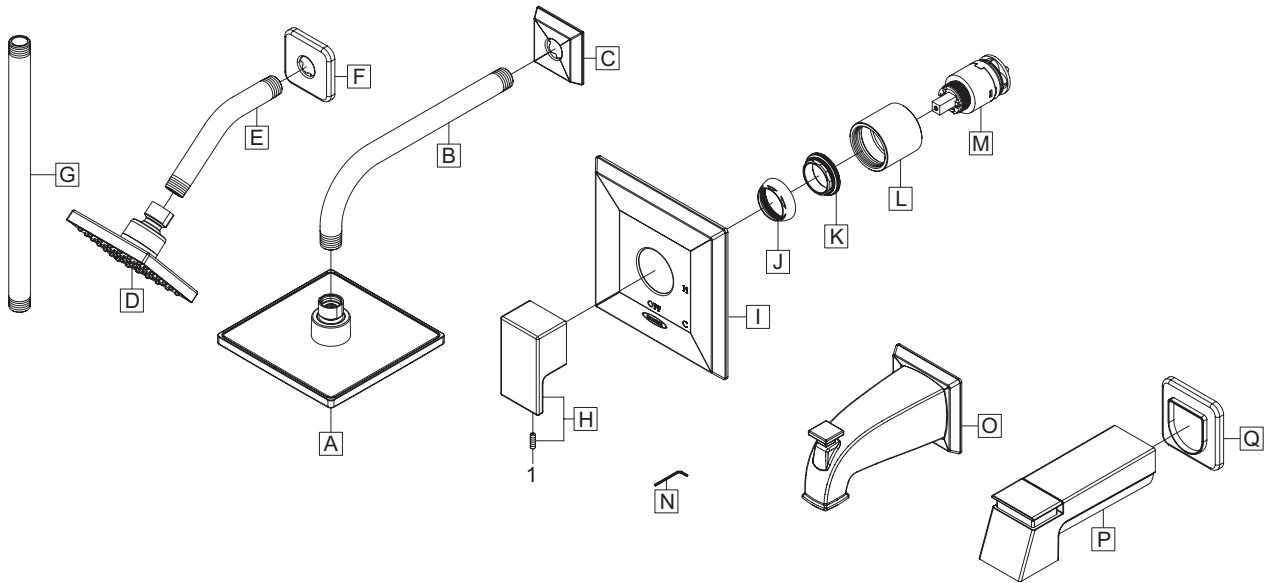
(7) Slide face plate on sleeve. Secure face plate by using silicon to caulk around edge of face plate. Install handle with Allen wrench. Turn on the main water supply. Check for any leak. Check the temperature with thermometer for the hot water. If needed to reduce the hot water temperature then, turn off main water supply. Remove handle with Allen wrench. Remove retainer nut. Turn red temperature adjusting ring clockwise to decrease the temperature. Ensure the hot water temperature is set below 120° F.

Exploded Drawing :

* Note: Please specify finish/color when ordering.

	ITEM #	DESCRIPTION
J	X-4200001*	Retainer Cap
K	X-4400080	Retainer Nut
L	X-4400030*	Sleeve
M	X-3400007	Ceramic Disc Cartridge
N	X-4900024	Allen Wrench
O	X-6400086*	1/2" Combo Diverter Tub Spout (For 4MO100T)
P	OP-640043	7" Extended Diverter Tub Spout (For 4MO110T)
P	OP-640044	7" Extended Tub Spout (For 4MO200T)
Q	OP-440055	Spout Escutcheon (For 4MO110T, 4MO200T)
1	X-4900080	Allen Screw

	ITEM #	DESCRIPTION
A	X-6400088*	1.75 GPM Shower Head (For 4MO100T, 4MO30XT)
B	X-6400104*	Shower Arm (For 4MO100T, 4MO300T)
C	X-6400103*	Shower Arm Flange (For 4MO100T, 4MO30XT)
D	OP-640042*	1.75 GPM Shower Head (For 4MO110T, 4MO310T)
E	X-6400002*	Shower Arm (For 4MO110T, 4MO310T)
F	OP640045*	Shower Arm Flange (For 4MO110T, 4MO310T)
G	X-6400106*	Shower Arm (For 4MO304T)
H	X-1400043*	Metal Lever Handle
I	X-6400064*	Face Plate



For more care information or trouble shooting inquiries
about your Pioneer product, please call:
Pioneer Industries, Inc. (800) 338-9468
Monday-Friday 8 AM to 8 PM EST (5 AM to 5 PM PST)
www.pioneerind.com