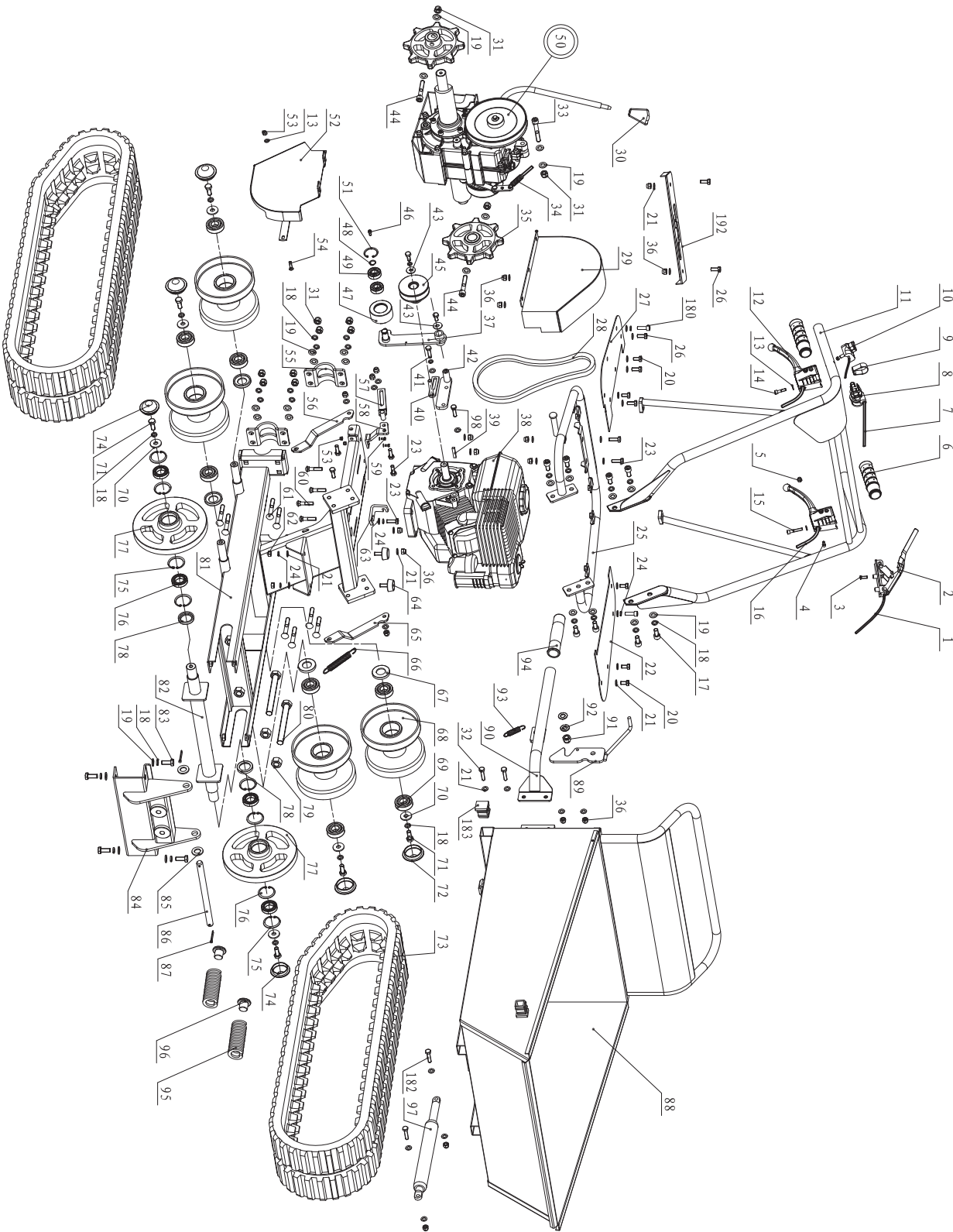
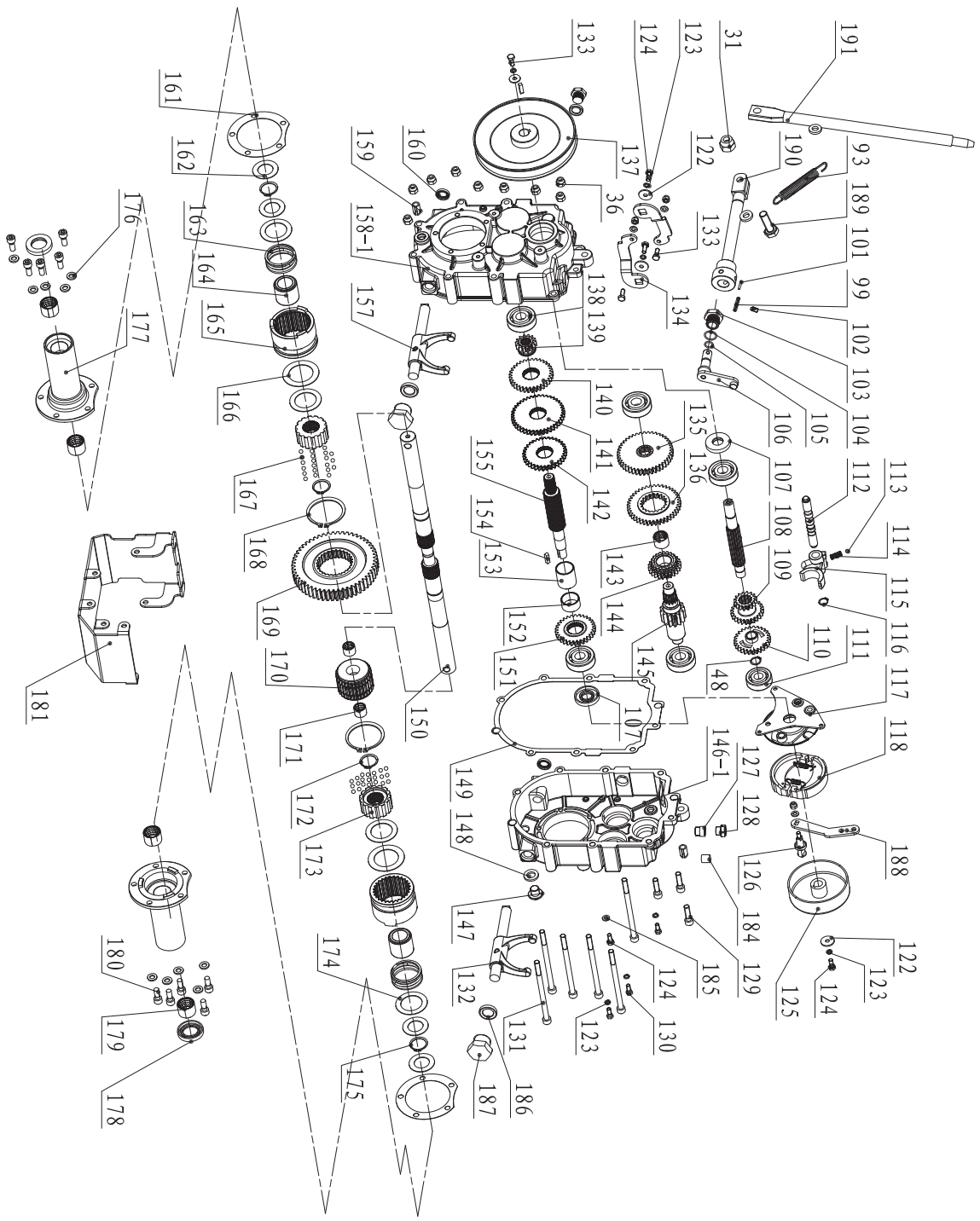


PARTS DIAGRAM



Gearbox



PARTS LIST

No.	Description	Qty	No.	Description	Qty	No.	Description	Qty
1	Tensioner Pulley Cable	1	37	Tensioner Pulley Bracket	1	73	Track 180×60	2
2	Safety Control Handle	1	38	Engine	1	74	Axle Head Cover(42)	2
3	Screw M6×16	1	39	Key 4.7×33	1	75	Circlip 42	8
4	Screw M5×20	2	40	Belt Protect Frame	1	76	Bear 61905-2RS	4
5	Nut M5	2	41	Bolt 5/16-24×30	2	77	Guiding Wheel	2
6	Handle Sleeve	2	42	Fixed Bracket	1	78	Sealing Ring30×42×7	2
7	Throttle Cable	1	43	Washer 8	2	79	Nut M16	2
8	Throttle Lever	1	44	Bolt M10×60	2	80	Bolt M16×110	2
9	HOOP	1	45	Belt Pulley	1	81	Underframe Weldment	1
10	ON/OFF Switch	1	46	Screw M5×12	1	82	Guide Wheel Axle	1
11	Handle Frame Assembly	1	47	Tensioner Pulley	1	83	Bolt M10×20	4
12	Lower Handle	2	48	Circlip 15	2	84	Support Bracket	1
13	Washer ø6	10	49	Bearing 6202-2Z	2	85	Flat Gasket 16	2
14	Screw M6×35	1	50	Gear Box	1	86	Plain Shaft	1
15	Screw M6×60	1	51	Circlip 35	1	87	Pin ø4×35	2
16	Right/Left Steering Lever Cable	2	52	Large Belt Pulley Cover	1	88	Dumper Box	1
17	Screw M10×20	8	53	Nut M6	8	89	Operation Lever Frame	1
18	Washer10	26	54	Bolt M6×20	1	90	Handle Frame Weldment	1
19	Washer10	22	55	Wheel Axle Press Board	2	91	Nut M12	1
20	Bolt M8X16	6	56	Support Plate (right)	1	92	Washer 12	2
21	Washer 8	39	57	Belt Blocker	1	93	Extension Spring	1
22	Soleplate (left)	1	58	Connecting Angle Block	1	94	Handle Sleeve	1
23	Bolt M8×25	11	59	Screw M6×25	2	95	Guiding Spring	2
24	Washer 8	7	60	Bolt M8×40	4	96	Locating sleeve	2
25	Handle Mounting Frame	1	61	Bolt M10×65 w/glue	8	97	Gas Spring	1
26	Bolt M8×20	3	62	Nut M8	2	98	Bolt 5/16-24×20	1
27	Soleplate (right)	1	63	Cable Fixing Base	1	99	Pin 5x30	1
28	Belt B32	1	64	Rubber Mat	2	100	Gear Shift Lever	1
29	Pulley Cover Weldment	1	65	Support Plate (left)	1	101	Pin 3×30	1
30	Lever Knob	1	66	Long Extension Spring	1	102	Bolt M6×8 w/glue	1
31	Lock Nut M10	12	67	Skeleton Oil Seal	4	103	Orientation Nut	1
32	Bolt M8×30	2	68	Weight Supporting Wheel Weldment	4	104	Washer Groupware D20	1
33	Bolt M10×70	1	69	Bearing 6204-2RS	8	105	O-Ring 11.2×1.8	1
34	Brake Cable	1	70	Washer 10	6	106	Lever Mount Bracket	1
35	Driving Wheel	2	71	Bolt M10×25	6	107	Seal FB17×40×7	2
36	Nut M8	25	72	Axle Head Cover(47)	4	108	Spline Shaft I	1
						109	Duplex Slip Gear	1

No.	Description	Qty	No.	Description	Qty	No.	Description	Qty
110	Gear	1	139	Gear II-5	1	168	Circlip 58	2
111	Bearing 6302	1	140	Gear II-4	1	169	Output Gear	1
112	Gearshift Fork Guide Pin	1	141	Gear II-3	1	170	Intermediate Joint Bush	1
113	Spring	1	142	Gear II-2	1	171	Intermediate Joint Bush Composite Bushing	2
114	Steel Ball 6	1	143	Gear III-2 Bush	1	172	Circlip 26	2
115	Gearshift Fork	1	144	Gear III-2	1	173	Joint Bush	2
116	Circlip 12	1	145	Gear Shaft III	1	174	Spring Gasket	4
117	Rivet Assembly	1	146-1	Gear Box Case (L)	1	175	Circlip 25	2
118	Brake Disk	1	147	Plug M14×1.5	2	176	Washer 8	10
119	Discontinued	N/A	148	Washer Groupware 14	2	177	Output Shaft Bushing	2
120	Discontinued	N/A	149	Gear Box Case	1	178	Seal FB42×25×7	2
121	Discontinued	N/A	150	Output Shaft	2	179	Output Shaft Composite Bushing	4
122	Washer6	4	151	Gear II-1	1	180	Screw M8×25 w/glue	12
123	Washer6	7	152	Bush 2	1	181	Guard Cover	1
124	Bolt M6×16	4	153	Bush 1	1	182	Bolt M8×35	2
125	Expansion Brake Cover	1	154	Key C5×20	2	183	Plug 35×35	2
126	Stud	1	155	Spline ShaftII	1	184	Sponge Gasket	1
127	Vent-Plug Bushing	1	156	Discontinued	N/A	185	Seal Gasket	1
128	Vent-Plug	1	157	Clutch Fork Shaft (R)	1	186	Seal Gasket 6	2
129	Screw M8×30	3	158-1	Gear Box Case (R)	1	187	Screw-Plug M18×1.5	2
130	Expansion Brake Lock Bolt	3	159	Pin 12×20	2	188	Brake Pull Plate	1
131	Screw M8×130	6	160	Seal FB16×22×4	2	189	Bolt M10×35	1
132	Clutch Fork Shaft (L)	1	161	Output Shaft Bush Gasket	2	190	Shifting Lever I	1
133	Bolt M6×20	3	162	Gasket 1	4	191	Shifting Lever II	1
134	Swing Plate	2	163	Clutch Spring	2	192	Gear Shifting Board	1
135	Gear III-4	1	164	Spring Guide Bush	2			
136	Gear III-3	1	165	Clutch Sleeve	2			
137	Large Belt Pulley	1	166	Spring Gasket	2			
138	Bearing 6303	5	167	Steel Ball 5	70			