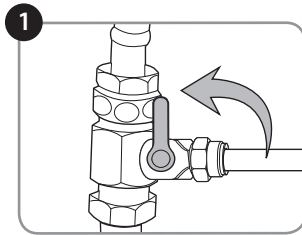
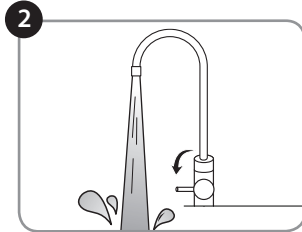


UC300 & UC100 CORAL WATER FILTER REPLACEMENT and Battery replacement for LED Indicator Faucet

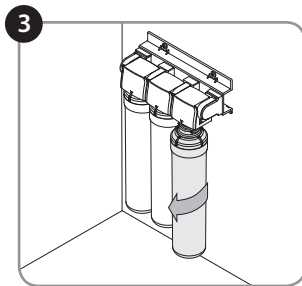
1. Close the T-Valve under the sink to shut off the flow of water to the Coral.



2. Once the T-valve is shut off, turn the Indicator Faucet on all the way and keep it on until all the residual water in the tubes has been expelled.



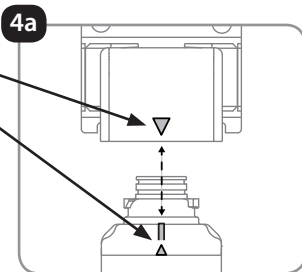
3. Turn the filter(s) to be replaced 90° to the left, until the filter comes out of the Filter Head Connection Assembly.
For the Coral UC300, remove the remaining two filters.
For the Coral UC100, the process is complete.



4. Install the new filter(s) by following the procedure outlined below.

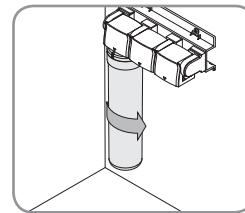
NOTE: For purchasers of the Coral UC300, it is very important to install the filters in the correct order. Simply match the same label colors to the filter head labels. From left-to-right, the proper order is
1) Sediment filter
2) Pre-Carbon filter
3) Carbon Block filter

a. To insert the filters, first line up the arrow on the filter head with the arrow on the filter

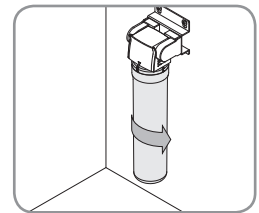


b. With the top and bottom arrows still lined up, insert the top of the filter into the housing and turn 90 degrees to the right, until the filter will not turn any more.

The Filter Head arrow should now be lined up with the "Circle" icon and notch on the top of the filter.



UC300

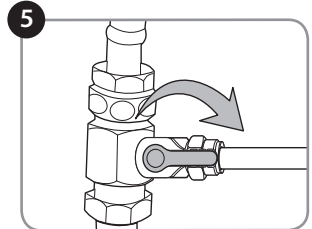


UC100

c. For UC300 – Repeat the process for the Pre-Carbon filter and Carbon Block filter. For UC100 – This process is complete.

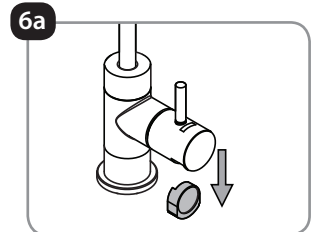
5. Open the T-Valve to restore the flow of water and turn the Indicator Faucet on for 5 minutes continuously to flush and activate the new filter(s).

Be sure to reset the Indicator Faucet by following the next steps.

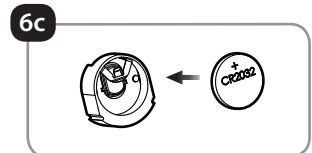


6. Replace the battery in the faucet LED indicator to reset the filter change reminder. The battery type is CR2032 and Brondell provides one with every set of UF300 and UF100 filters.

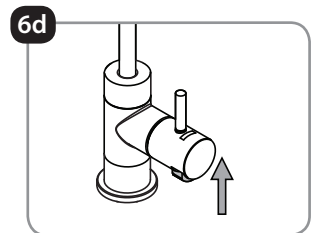
a. Under the faucet handle, locate the black rubber battery compartment. Grasp it from the sides and pull down as shown.



b. Remove the old battery from the compartment by lifting the silver metal tab and sliding the battery out of the rubber casing. Wait 30 seconds for the residual energy to drain to reset the indicator.



c. Replace with a new CR2032 battery by sliding the battery under the silver tab, making sure that the words on the battery are facing out.



d. Push the black rubber battery compartment back up into the faucet handle.