

Mobile Microbubble+Heat Massage Walk In Bathtub



OA2645MH-L Left Drain



OA2645MH-R Right Drain

Actual Size: 26'' W x 45'' L x 42'' H
 Shipping Size: 28'' W x 47'' L x 50'' H
 Shipping Weight: 300lbs.
 Net Weight: 220lbs.
 Water Capacity: 75 gal. US (unoccupied)
 45-55 gal. US (occupied)
 Approx. Drain Time: +/- 2 minutes (unoccupied bathtub)
 at ideal home plumbing conditions
 Approx. Fill Time: 14 gallons per minute
 based on in-house water pressure
 (Disclaimer: Drainage time depends on house drain conditions.)

Options:

- Left or Right Hinged Door

Included Features:

1. Acrylic Tub Shell:
 - High quality acrylic
 - Excellent color uniformity
 - High Gloss White Finish
 - Fiberglass Reinforced
 - Fiberglass Reinforced
2. Low threshold step in 7''
3. Stainless Steel Frame with Adjustable Leveling Legs
4. Seat: 19'' W x 16.5'' H x 14'' L
5. One (1) front and one (1) end removable access panels
6. Wall mounted stainless steel safety grab bar in plated chrome finish
7. Heated seat and backrest (4AMP 470W)
8. MicroBubble Therapy System (10AMP 1,200W)
 - 1HP Pump
 - Pressure Vessel
 - Air Switch and one (1) jet
 - Agitator Valve
9. Five-Piece thermostatic faucet set (chrome finish)
 - Thermostatic control valve
 - Two (2) 2-way diverters with extension handles
 - Pull out, hand held, chrome plated shower with 5 ft. retractable stainless steel braided hose

Plumbing:

- Two (2) x 5' long stainless steel braided water supply lines with 3/4'' IPS connectors
- 2'' floor drain

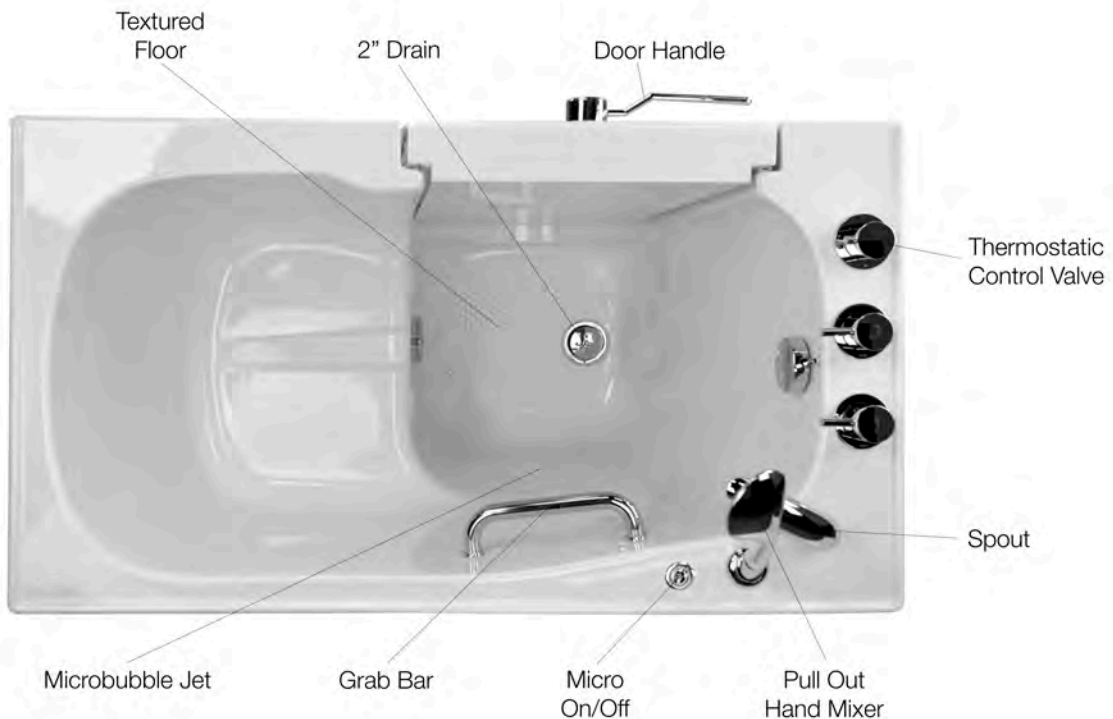
Electrical:

Electrical requirement is one dedicated 120 V electrical line with a 20AMP GFCI standard three prong outlet

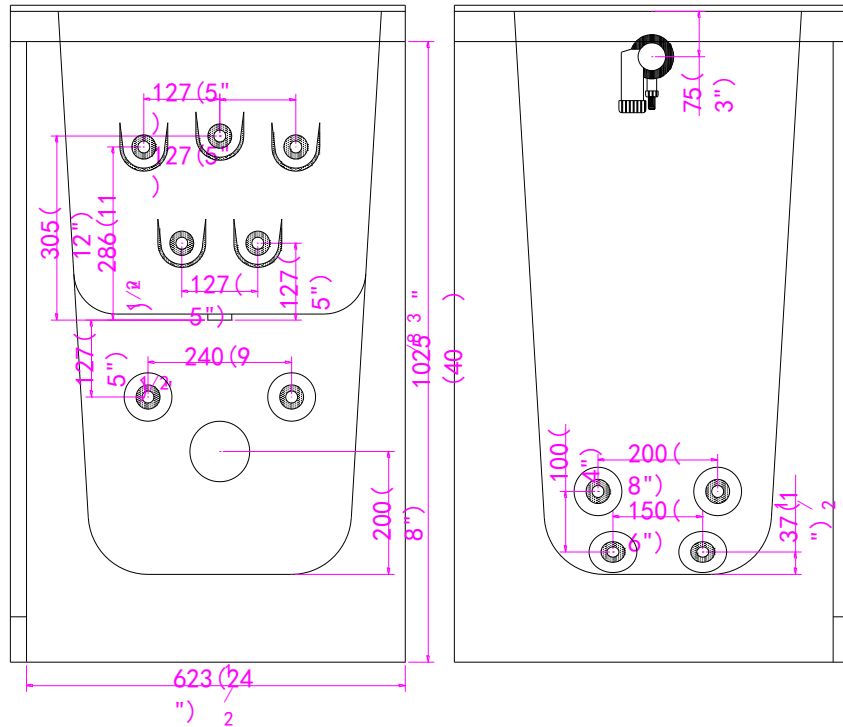
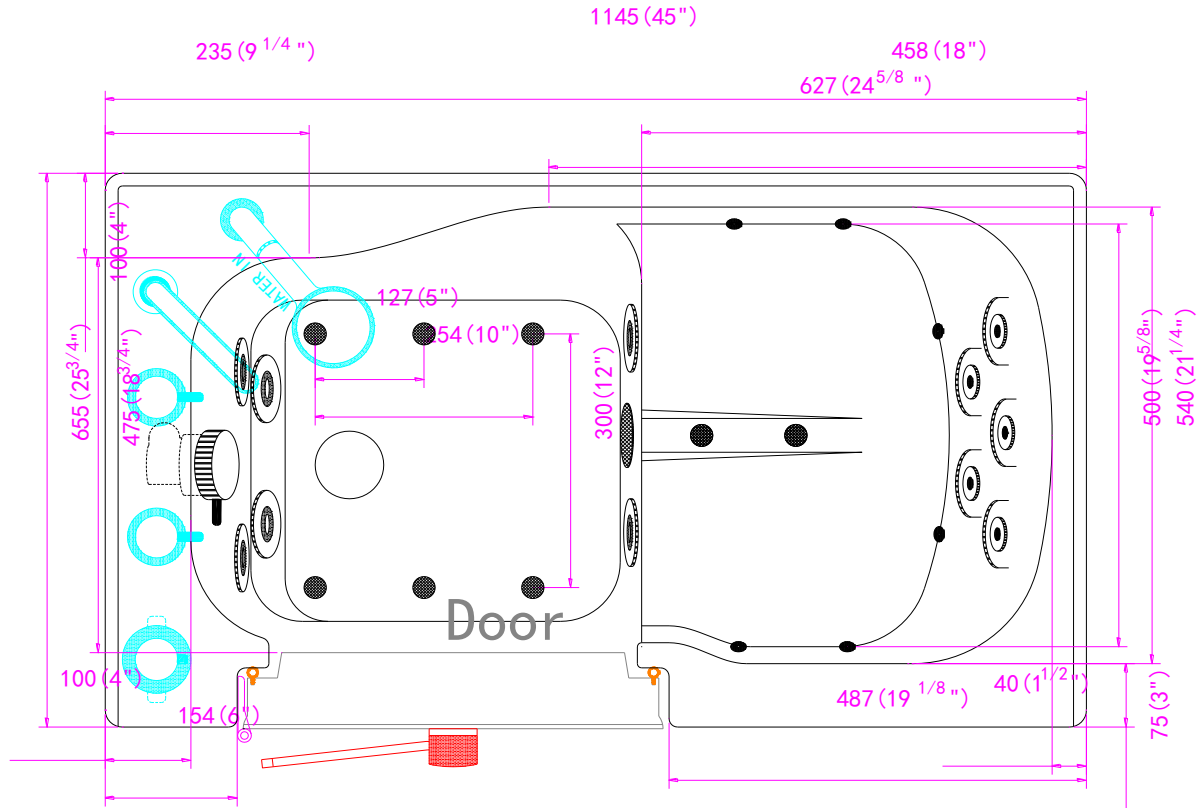
Warranty:

- Lifetime limited warranty on acrylic walk in tub shell, frame, and door.
- 5 Year parts warranty*
- Thermostatic Control Valve (TCV) 1 year limited warranty

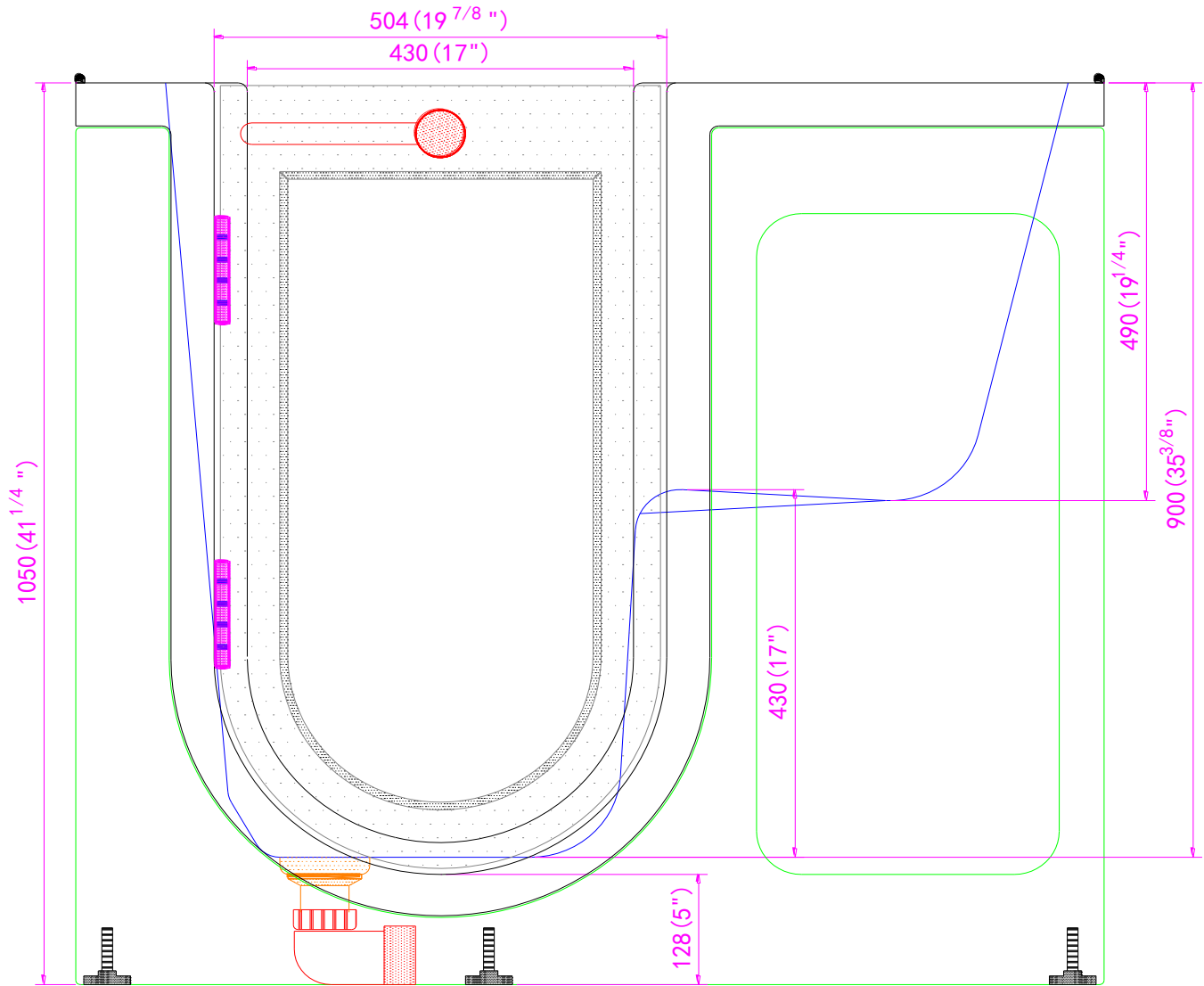
Mobile Microbubble+Heat Massage Walk In Bathtub



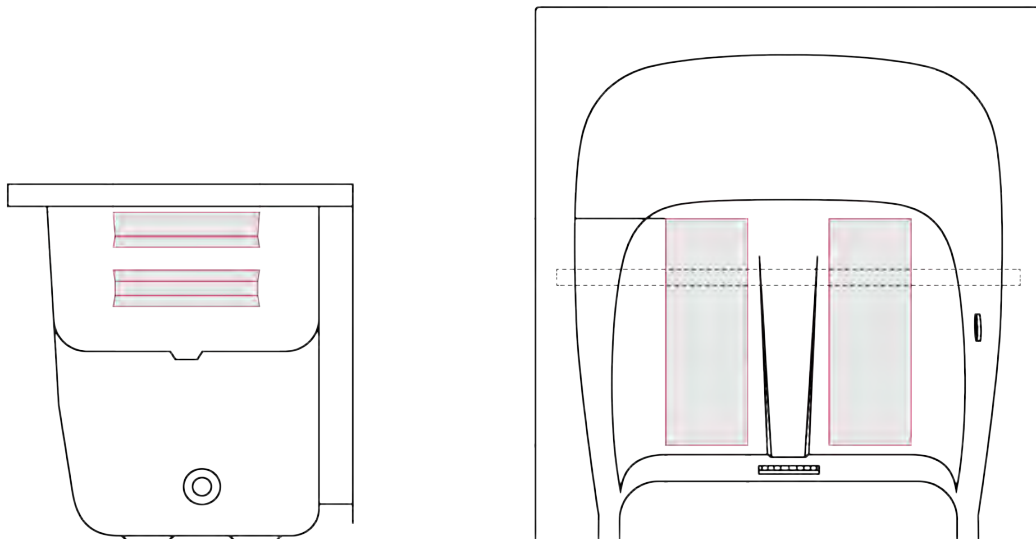
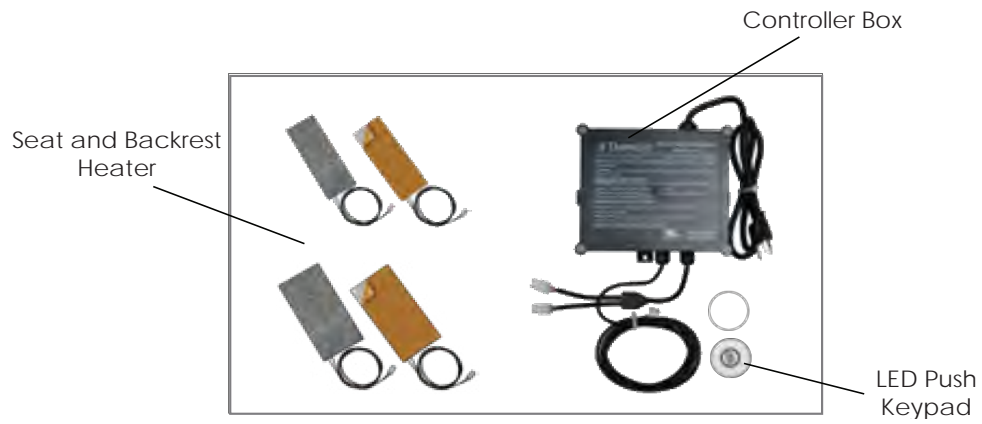
Mobile Microbubble+Heat Massage Walk In Bathtub



Disclaimer:
In an effort to continually improve our product, specifications and configurations are subject to change without notice. Before ordering or installing, consider future access to essential equipment.



Disclaimer:
In an effort to continually improve our product, specifications and configurations are subject to change without notice. Before ordering or installing, consider future access to essential equipment.



Disclaimer:
In an effort to continually improve our product, specifications and configurations are subject to change without notice. Before ordering or installing, consider future access to essential equipment.