



**OLYMPIA FAUCETS, INC.**

Interchange City Distribution Center #20  
1277 Heil Quaker Boulevard  
La Vergne, TN 37086  
(888) 772-7701  
www.olympiafaucets.com

**Model Number: K-4160H, K-4161H (CP, PVD BN),  
K-4164H**

# INSTALLATION

**Tools:**



Adjustable Wrench



Plumbers Putty



Teflon Tape



Rags

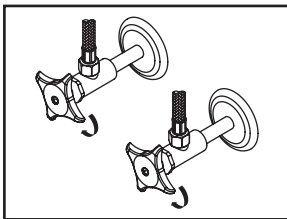


**Warnings and Notes:**

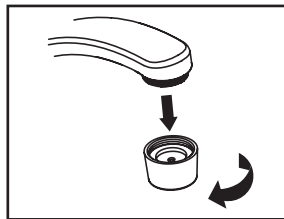
Check with local plumbing code requirements before installation.  
This product should be installed by a local listed plumber.  
**Do not use plumbers putty on threads.**

## Installation Steps:

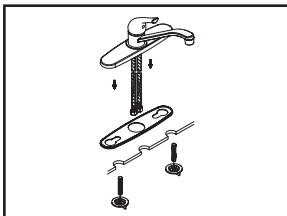
### Single Handle Kitchen Faucet



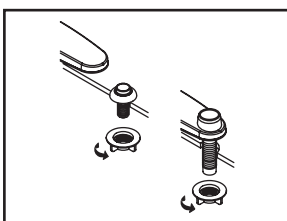
(1) Shut off water supplies. Remove old faucet. Clean mounting surface in preparation for new faucet.



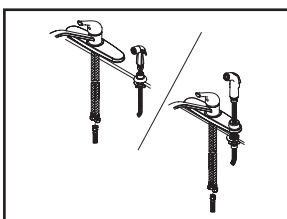
(6) Important: After installation is complete, remove aerator. Turn water supplies on and allow both hot and cold water to run at least one minute each. While water is running, check for leaks. Turn off water and replace aerator.



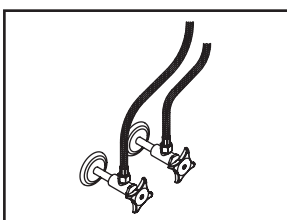
(2) Apply adequate plumbers putty along the boundary of base gasket. Thread mounting bolts to the bottom of faucet. Align faucet with mounting holes and place faucet on the sink, thread locknut onto mounting bolts from underneath of the sink, hand tighten locknuts.



(3) For faucet with side spray, place spray holder on mounting hole or on faucet deck plate for side spray on deck type. Tighten locknut from underneath of the sink.



(4) Attach side spray to side spray hose, insert side spray hose down through spray holder; attach side spray hose to faucet side spray port, hand tighten securely.

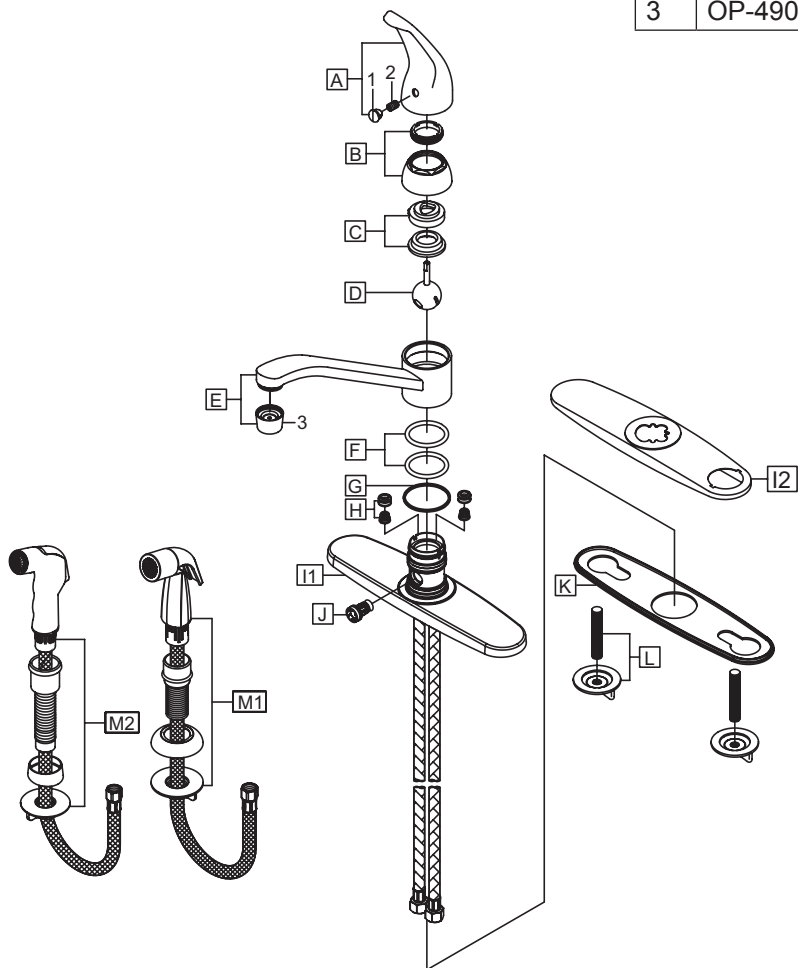


(5) Connect both hot (left) and cold (right) flex inlet lines to water supply valves. Note: Additional adapters or flex supply lines are required if outlet size of water supply valve is not 3/8" compression.

## Exploded Drawing:

\* Note: Please specify finish/color when ordering.

	ITEM #	DESCRIPTION
A	OP-190001*	Metal Lever Handle
B	OP-490003*	Cap & Adjusting Ring
C	OP-490004	Cam and Washer
D	OP-390001	Stainless Steel Ball
E	OP-220001*	'D' Style Spout
F	OP-420001	O-Rings
G	OP-420002	Gasket
H	OP-490041	Springs and Seats
I1	OP-420003*	Deck Plate (For K-4160H, K-4161H)
I2	OP-420006	Deck Plate(For K-4164H)
J	OP-420005	Diverter Piston (For K-4161H, K-4164H)
K	OP-420004	Base Gasket
L	OP-520003	Mounting Bolts & Nuts
M1	OP-420051*	Side Spray Assembly (For K-4161H)
M2	OP-420037	Side Spray Assembly (For K-4164H)
1	OP-490002	Hot & Cold Indicator
2	OP-490043	Allen Screw
3	OP-490035*	1.5 GPM Aerator



**OLYMPIA**

For more care information or trouble shooting inquiries about your Olympia product, Please call:

**OLYMPIA FAUCETS, INC.** (888) 772-7701

8AM - 8PM EST (5AM to 5PM PST)

[www.olympiafaucets.com](http://www.olympiafaucets.com)