

96 DURAPAN™ Wash Mashine Pan

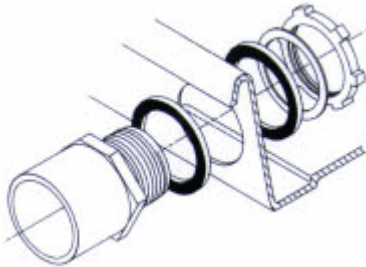
Fits Standard and Extra-large Washers



Outlet Drain May Be Installed to Any Side or Bottom — for placement away from DWV Pipe

- Sturdy One-piece Molded Co-PolyPure™, white
- Side / Bottom Outlet Solvent Weld 1" PVC Fitting (Furnished), Mounts to side or bottom of DURAPAN™
- Extra Large to accomodate today's large wash machine
- Easy to Install

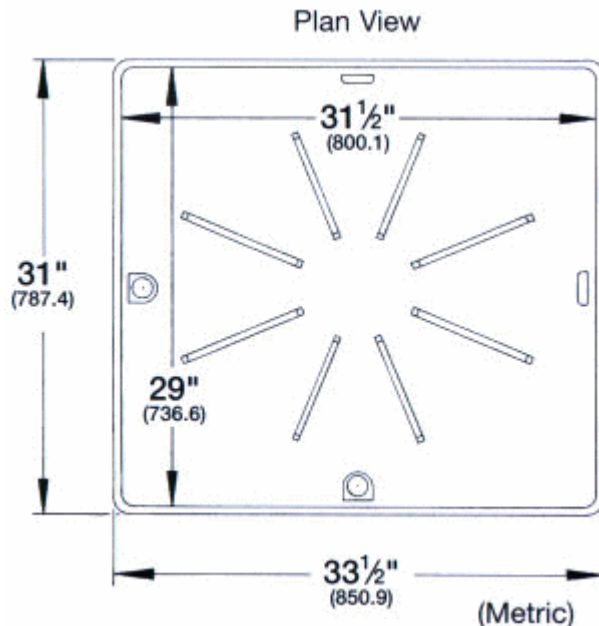
Installing Side / Bottom Outlet Fitting...



Drill 1-3/8" dia. hole on side or bottom surface of DURAPAN™ and install fitting as shown. Position DURAPAN™ and connect solvent-weld fitting to 1" PVC pipe (not provided) leading to drain pipe. Place wash machine inside DURAPAN™ to complete installation. Contents: Washing machine pan and 1" PVC drain fitting.

SPECIFICATIONS

Model No.	Drain Location	Overall	Inside	UPC
96	Side / bottom drill hole	31"L x 33-1/2"W x 2-1/8"H	29"L x 31-1/2"W	6 71031 00381 2



General: Furnish and install as shown on plans, DURAPAN™ Wash Machine Pan model 96, as manufactured by E.L. Mustee & Sons, Inc. One-piece compression molded Co-PolyPure™, using matched metal molds. Shall include (1) 1" PVC fitting. Color:White Install in compliance with local codes.