

Carlon®

Rigid Non-Metallic Conduit

A job that normally takes 20 minutes —
DONE in 2 minutes or less!

Carlon® PVC Conduit Repair System

The new, revolutionary Carlon® PVC Conduit Repair System significantly reduces the time and money associated with repairing broken PVC conduits, a.k.a. "stub-ups", in concrete slabs.

The system includes a line of couplings, adapters, reamers and plugs designed to enable contractors to quickly and easily repair broken PVC conduits without having to chip away and repour concrete, while still maintaining the inside diameter of the conduit. Simply cut off the broken conduit, ream the I.D. of the conduit and insert a coupling or adapter. It's that easy. A job that normally takes 20 minutes can now be done in 2 minutes or less!

Features:

- cUL-US Listed
- PVC repair fittings are listed in accordance with the NEC® and Section 352.6
- Non-metallic couplings, adapters and plugs won't rust or corrode
- Available in sizes ½" through 2"

Benefits:

- Saves time and money
- Maintains inside diameter of conduit
- Metallic reamers for extra strength, durability and longer life
- Quickly and easily repair broken PVC conduits



Carlon® Non-Metallic Rigid Conduit, Fittings and Accessories

Couplings

CAT. NO.	TRADE SIZE (IN.)	STD. CTN.
E910D	½	25
E910E	¾	25
E910F	1	15
E910G	1¼	10
E910H	1½	10
E910J	2	10



Coupling

Schedule 40 Plugs

CAT. NO.	SIZE (IN.)	COLOR	CAT. NO.	SIZE (IN.)	COLOR	CAT. NO.	SIZE (IN.)	COLOR	STD. CTN.
HL-6XR	½	Red	HL-6XB	½	Blue	HL-6XY	½	Yellow	1 Bag of 50
HL-10R	¾	Red	HL-10B	¾	Blue	HL-10Y	¾	Yellow	1 Bag of 50
HL-13AR	1	Red	HL-13AB	1	Blue	HL-13AY	1	Yellow	1 Bag of 50
HL-16R	1¼	Red	HL-16B	1¼	Blue	HL-16Y	1¼	Yellow	1 Bag of 50
HL-18R	1½	Red	HL-18B	1½	Blue	HL-18Y	1½	Yellow	1 Bag of 50
HL-21R	2	Red	HL-21B	2	Blue	HL-21Y	2	Yellow	1 Bag of 50



Reamer

Reamer Kit

Reamers

CAT. NO.	TRADE SIZE (IN.)	STD. CTN.
E910REAMD	½	12
E910REAME	¾	12
E910REAMF	1	10
E910REAMG	1¼	10
E910REAMH	1½	10
E910REAMJ	2	10
E910REAMKIT	All sizes	5

Male Threaded Adapters

CAT. NO.	TRADE SIZE (IN.)	STD. CTN.
E920D	½	25
E920E	¾	25
E920F	1	15
E920G	1¼	10
E920H	1½	10
E920J	2	10



Male Threaded Adapter



Plug

Corporate Office
Tel: 901.252.8000
800.816.7809
Fax: 901.252.1354

Customer Service
Tel: 800.816.7809
Fax: 800.816.7810

Technical Services
Tel: 888.862.3289
Fax: 901.252.1321

Tool Services
Tel: 800.284.8665

Thomas & Betts

www.tnb.com

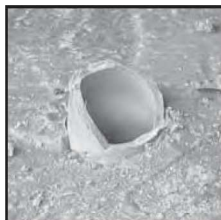
F-35



Carlton®

Rigid Non-Metallic Conduit

PVC Conduit Repair Fittings



Broken conduit on jobsite



Coupling
E910_



Male Threaded Adapter
E920_

Instructions:

- 1 Cut broken conduit off flush.



- 2 Insert plug to keep conduit clean/dry through balance of rough-in. Once rough-in is complete, remove plug and **continue with Step 3**.



Alternative to Conduit Repairs:

Prior to concrete pour, measure and saw cut all conduit stub-ups to the thickness of the concrete pour. Insert plugs. Pour concrete flush to the conduit. When pour is complete, remove plugs and **proceed with Step 3**. This alternative method saves time/money by eliminating the need for transitions or use of metal elbows.

- 3 With reamer tool and standard 1/2" drill, ream I.D. of conduit. It is recommended to use a variable speed drill. Use slower speed to avoid overheating the conduit.



- 4 The guide will direct the cutter; the stop will touch when completed.



- 5 Insert the coupling and cement into place using the cement manufacturer's instructions.

Cementing Instructions:

- A. Clean socket I.D. and spigot O.D. of dirt and moisture.
- B. Apply a uniform coat of cement to spigot end and push onto socket bottom, rotating 1/4 turn.
- C. Allow time to set before disturbing. This will depend upon temperature.



Apply a uniform coat of cement.



Insert fitting.



Rotate 1/4 turn.