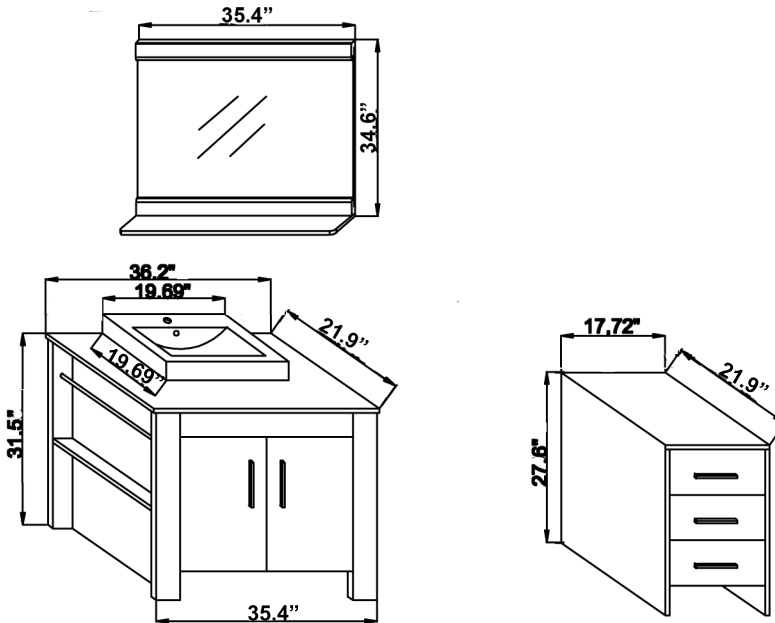


MS-7054L INSTALLATION GUIDE

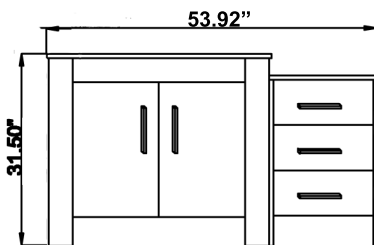


Dimensions

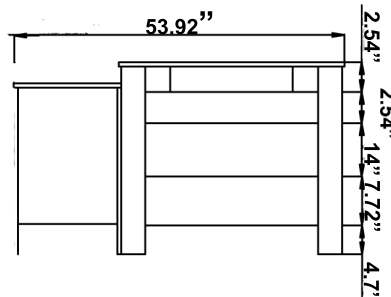


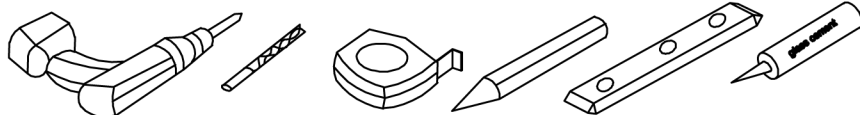
Model	Vanity Front	A
MS-7054L	53.92"	

Vanity Front



Vanity Back

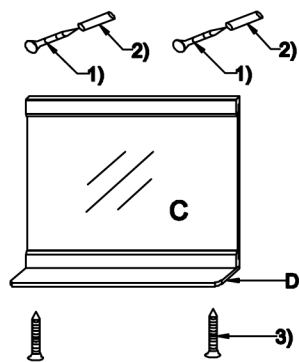




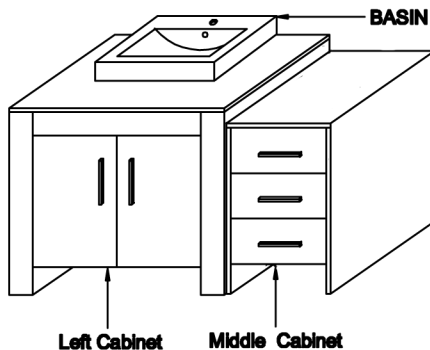
erecting tools

PARTS

MIIRROR

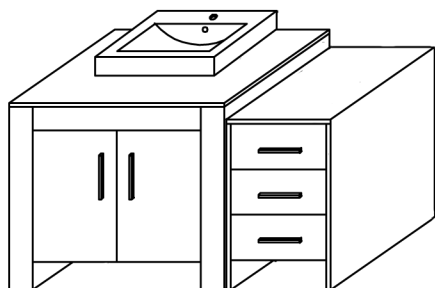


CABINET

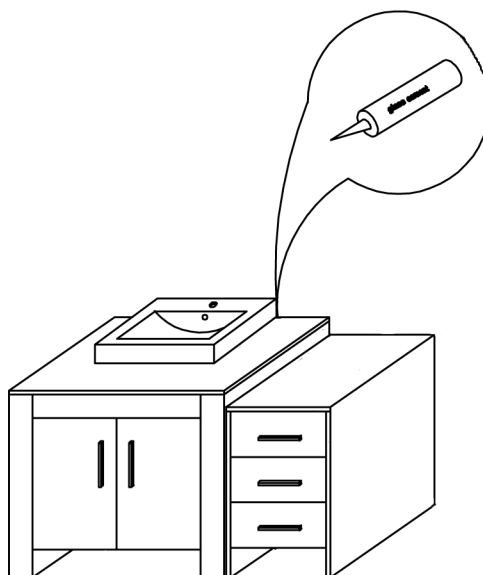


1)		M5X50	self-tapping screw
2)		Ø8	Expansion stopper
3)		M5X40	self-tapping screw

1 PLACE MIDDLE CABINET TO THE RIGHT OF THE LEFT CABINET

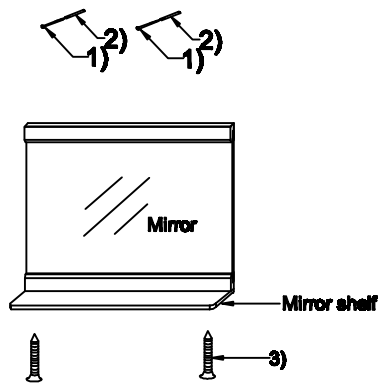


2 Apply silicone and install basin



3**Install mirror**

1. Link the mirror shelf to the mirror using provided screws (C);
2. Confirm the height of placement;
3. Install mirror to wall using (A) and (B).

**4****Install faucet & drain assembly**