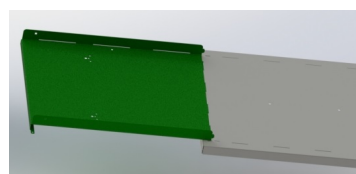


1. Bring your packaged TuffBoxx to the location in which you plan to place and store your TuffBoxx. This makes it easier to move the assembled bin into position when finished, or assemble it right where you're mounting it. **Your TuffBoxx should rest on a level surface. If mounting the TuffBoxx with the backside against a wall or any other obstruction, please complete steps 2 and 3 before mounting.** Open your packaging and ensure you have all the parts listed. Begin by placing the base on the ground (with the chain mount slots indicating the backside of the base) and mount into position, using the Base Mount Feet (TuffBoxx recommends using a concrete pad for best results). You will need a 3/8" or 1/2" bolt to do this (not supplied). You may mount the bin after full assembly as well (see Step # 10 when finished assembling).

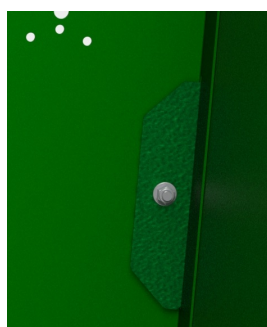
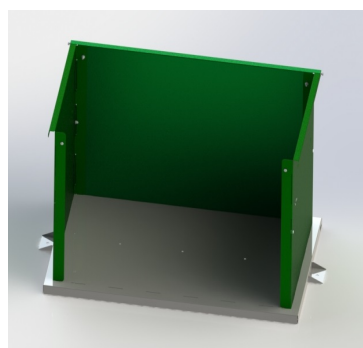


2. Install the two side panels **ensuring that the shock mount is to the front of the bin.** Take one of the side panels, and insert the tabs into

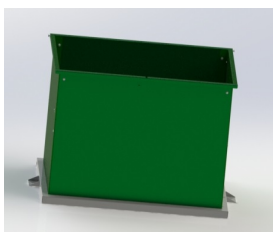
the corresponding slots on one side of the base. Ensure that the tabs are fully engaged (if not fully engaged, the side panel could distort). Gently lift the side panel until vertical. Hit the bottom of the Side Panel with your hand gently on each side, pushing the Side Panel towards the centre of

the base to engage the catch, allowing the Side Panel to stand on its own. Repeat this step on the other side.

3. Similar to side panels, place the tabs of the Rear Panel into the slots at the rear of the base (the rear of the base is where the oval chain holes are located in the sides of the base.) **For the DockBoxx the rear panel will have louvers in it.** Ensuring that the tabs are fully engaged, gently lift the rear panel vertical so that the larger tabs on each end of the rear panel engage with the slots cut into the upright corners of the side panels. Once the Rear Panel is engaged with the sides on each end, place a 1/4" x 3/4" carriage bolt (from the outside) into the square holes half way up the side panels. Place a 1/4" nut and 1/4" flat washer on each bolt, and tighten.



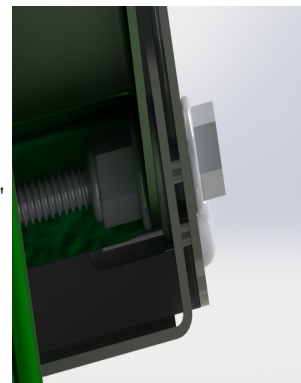
4. Install the Front Panel in the same way as the Rear Panel. Insert the remaining two 1/4" x 3/4" carriage bolts, 1/4" flat washer and 1/4" nut, and tighten.



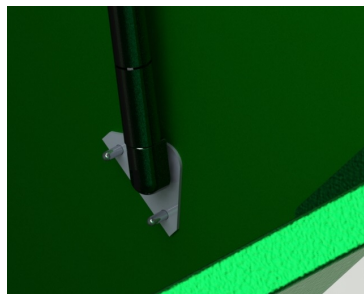
5. Insert the four 1/4" carriage bolts, 1/4" flat washer, and 1/4" nuts on the front and back of the bin. Hand tighten until all bolts are in, then tighten the rest of the way.

6. Lift and place the lid into position by laying on the assembled section of the bin. (ensure that the handle on the lid is facing the front of the bin.

7. Once into position insert the two 1/4" x 1.5" hex bolts, the four 1/4" flat washers and the two 5/16" plastic washers on each side. The 5/16" plastic washer should be placed between the lid and the panel. (see picture)



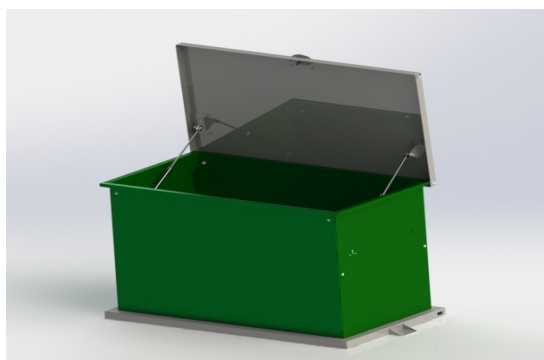
8. Gently lift the Lid open until it comes to a rest. Take a Gas Shock and attach it to the attachment on the inside of one of the Side Panel mounts, by pressing the end with the thicker Gas Shock body into the ball joint. It should snap in fairly easily. Once the lower end is installed, attach the other end of the gas shock to the corresponding ball joint attached on the lid. Carefully close the lid until the shock attachment on the lid lines up with rod end of the shock and snap the shock into place the same way.



9. Repeat step 8 on the other side of the bin.

10. If mounting after fully assembled, then now place your bin into the position in which you intend to mount it. **Again, the bin should be on a level surface whether mounting or not.** After placing the bin into position, insert the 2 Base Mount Feet on each side of the bin (TuffBoxx recommends you use a concrete pad for best results). You will need a 3/8" or 1/2" bolt to do this (not supplied).

11. Your TuffBoxx should now be assembled! **For the DockBoxx you can tie down up to three, 24" cushions (not included) using the 6 holes located on the front of the lid. This is to double the bins' purpose as a storage bin and also create seating!** If you have ordered the optional Flag Notification(s) or Snap Clip catches, the installation instructions for each of those items are included with them.



### THANK YOU FOR CHOOSING TUFFBOXX!

If you need to reach us for help with assembly, or for any other questions or comments, call 844-426-5553 or e-mail [support@usetuffboxx.com](mailto:support@usetuffboxx.com)

Congratulations on your new TuffBoxx purchase! This is a list of instructions on how to assemble your new Kit or DockBoxx model bin. By following our instructions, TuffBoxx containers can be assembled easily by one person. If you have someone to help you assemble your bin however, TuffBoxx recommends you assemble with two people for heavy lifting purposes.

### TOOLS REQUIRED

It will require just a few basic tools to assemble your TuffBoxx, primarily a ratchet or drill, a 7/16" socket and a 7/16" wrench (or an adjustable wrench). If you only have standard wrenches or an adjustable wrench, the bin can still be assembled, but will take a little longer to tighten the nuts.

### PARTS LIST

#### Main Components:

- 1 Lid
- 1 Base
- 1 Front Panel with TuffBoxx logo
- 1 Rear Panel
- 2 Side Panels
- 2 Gas Shocks
- 2 Base Mount Feet

#### Fasteners:

- 1/4" x 3/4" Carriage Bolts - 8
- 1/4" NyLock Nuts - 10
- 1/4" Flat Washers - 12
- 1/4" x 1" Hex Bolts - 2
- 5/16" Plastic Washers - 2

If you are missing any parts or hardware in your packaged TuffBoxx, please contact the number or email listed immediately.