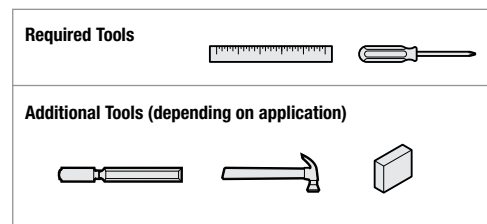


# SMARTCODE 909

TOUCHPAD ELECTRONIC DEADBOLT

## Installation Guide



Use and programming instructions are located on the reverse side of this document.

### Parts in the Box

<b>Latch and Strike</b>  <b>A2</b> If needed, please contact Kwikset to order a drive-in latch for your lock. Kwikset 1-800-327-5625 www.kwikset.com	<b>Exterior Assembly</b>  J H	<b>Interior Assembly</b>  K L M N P Q R S
--	--	--

### 1 Check dimensions

Additional door preparation may be required for doors with 1-1/2" (38 mm) thick doors. Consult the drilling instructions at [www.kwikset.com/doorprep](http://www.kwikset.com/doorprep).

\*Service kits for 2-1/4" (57 mm) thick doors are available through Kwikset.

### 2 Extend latch bolt

A / A2

### 3 Adjust the backset of latch (if needed)

**A** Hold the latch in front of the door hole, with the latch face flush against the door edge.

**B** If the latch holes are centered in the door hole, no adjustment is required. Proceed to step 4. If the latch holes are NOT centered, adjust latch. See "Latch Adjustment."

Latch Adjustment (only if needed)

### 4 Install latch

**For doors with chiseled edge**

**For doors without chiseled edge**

A  
A2  
B  
C (2x)  
C  
D  
wood block

### 5 Prepare exterior keypad

**For doors with 2-1/8" (54 mm) holes**

**For doors with 1-1/2" (38 mm) holes**

E  
F  
G

### 6 Install keypad and mounting plate

**A** Cable goes underneath latch

**B** Route cable through center hole, then push cable into side hole.

**C** Keep parallel to edge of door

**D** Insert key and test latch. If latch does not extend or retract smoothly, adjust screws (Q). Remove key when finished and make sure the latch bolt is fully extended.

Tighten screws evenly  
Q (2x)

### 7 Disassemble interior assembly and load battery pack

**A** **B** **C** Make sure turnpiece is in the vertical position.

**D** AA x4  
L  
Ensure correct polarity. For best results, use new non-rechargeable Alkaline batteries only.  
Do not install battery pack yet!

### 8 Install interior assembly

**A** **B** Lay cable flat against the interior housing.

**C** **D** P (2x)

Ensure tight cable connection.

### 9 Perform door handing process

This step will teach your lock the orientation of your door and is crucial to lock operation.

**A** Press and hold the Lock button while installing battery pack (L). Hold button until the latch bolt starts moving on its own.

**B** Did the latch bolt retract and extend on its own when the battery pack was installed?

<b>YES</b>	<b>NO</b>
Door handing process was successful! Proceed to Step 10 after latch bolt stops moving.	Remove battery pack, wait 15 seconds, then attempt the process again.

### 10 Install strike

D (2x)

### 11 Program the lock

Programming instructions are located on the reverse side of this document.

### 12 Install the battery cover and re-key the lock

**A** **B** ball tip  
S  
R (3x)

Keep "S" in a safe place, as you will need it to access the back panel for additional programming.

**C** J  
If needed, re-key the lock to work with your existing key. See the supplied SmartKey Re-key instructions for more information.

### Template

If your door requires drilling, cut out the template and place it on the exterior side of the door. Complete door drilling instructions are available on the SmartCode deadbolt page of [www.kwikset.com](http://www.kwikset.com).

Edge  
Face  
Centerline  
Backset

2-1/4" (57 mm)  
1-3/8" (35 mm)  
2-3/8" (60 mm)  
2-3/4" (70 mm)

# SMARTCODE 909

TOUCHPAD ELECTRONIC DEADBOLT

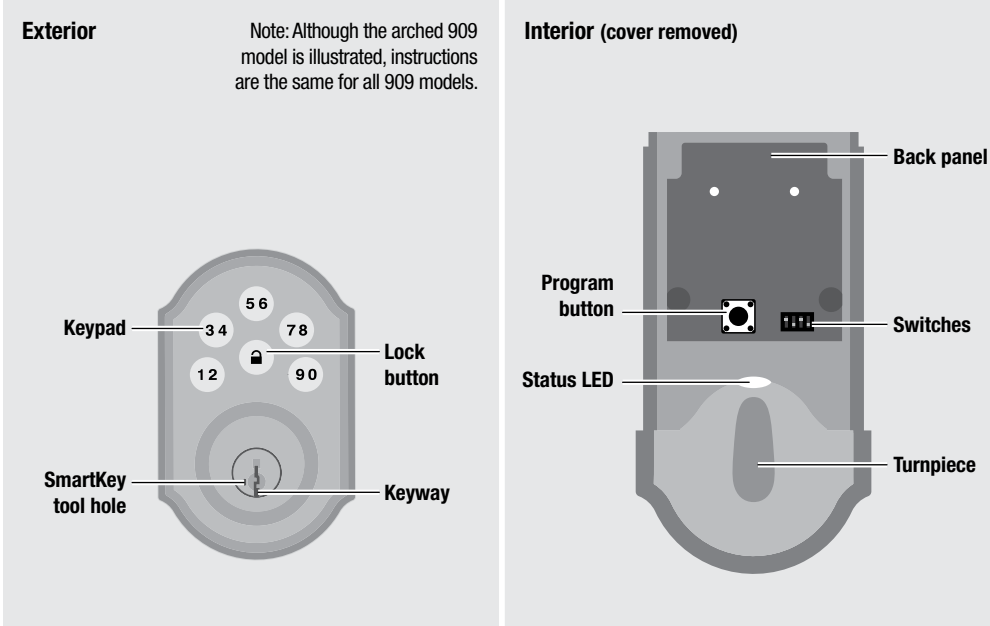
## User Guide

**Kwikset**  
1-800-327-5625  
www.kwikset.com

Troubleshooting and FAQs are available online at [www.kwikset.com](http://www.kwikset.com).

Installation instructions are located on the reverse side of this document.

## A SmartCode at a Glance

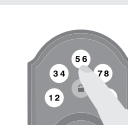


## B Normal Operation

### Unlocking the Door

Enter user code.

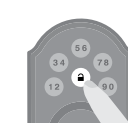
Tip: You can press the Lock button before entering your user code to light up the keypad at night.



### Locking the Door

Press Lock button once.

If no user codes are programmed, the Lock button will be disabled.

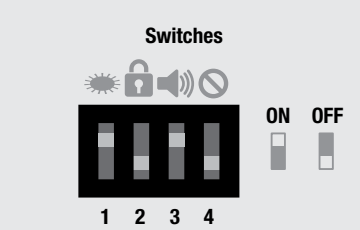


### Incorrect Codes

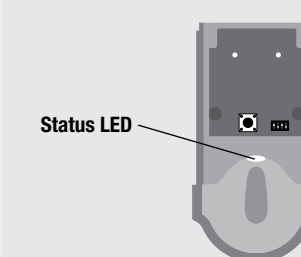
Codes Entered	Lock Behavior	Next Step
One incorrect code entered.	Keypad flashes red three times with three beeps*	Re-enter code.
Three incorrect codes entered within one minute.	Keypad flashes red 15 times with 15 beeps*	Re-enter code after 60 second keypad lockout.

\*If switch #3 is ON

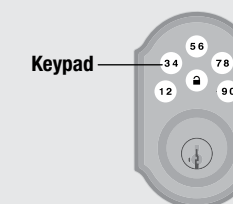
## C Switches, Status LED Colors and Keypad Warnings



Switch	Function
1	Door lock status LED blinks every 6 seconds
2	Lock automatically re-locks door 30 seconds after unlocking. Disabled if no codes are programmed.
3	Audio
4	Not used



Color	Lock Status
Blinking green	Unlocked
Blinking amber	Locked
Blinking Red	Low battery
Solid Red	Door Handing Process did not work properly. See online Troubleshooting guide.



Warning	Reason	Solution
Keypad flashes red with fast beeping sound* for 3-4 seconds.	Low battery	Replace batteries
	Door jammed while attempting to lock	Relock door. If needed, reposition strike.
	No user code programmed	Program at least one user code

\*If switch #3 is ON

## D Programming Codes

### a Programming Information

#### User Codes Requirements

Each user code must be a unique code between 4 and 8 digits. A total of 8 user codes may be programmed.

#### How the Keypad Works

Each button represents two numbers (i.e. 1 and 2 for the first button). You only need to push the button once to get either 1 or 2. For example: If your code is 1-2-5-6-8,



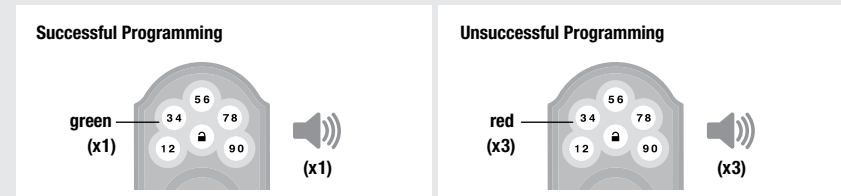
#### Programming Behavior

##### Successful Programming

The keypad will flash green once, and you will hear one beep\*.

##### Unsuccessful Programming

The keypad will flash red three times, and you will hear three beeps\*.



#### Timeout

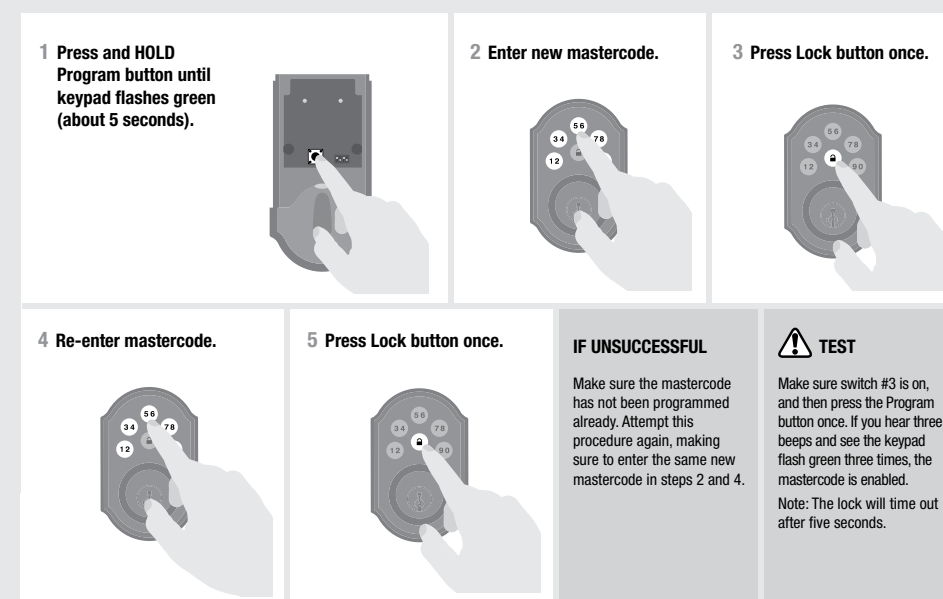
If no button is pressed for five seconds, the system will time out and you will need to restart the procedure.

	Timeout Behavior	
	Switch #3 ON	Switch #3 OFF
Mastercode enabled	red (x6)	red (x6)
Mastercode NOT enabled	(x2)	red (x3)

\*If switch #3 is ON

### b Enabling and Adding a Mastercode (Optional for Enhanced Security)

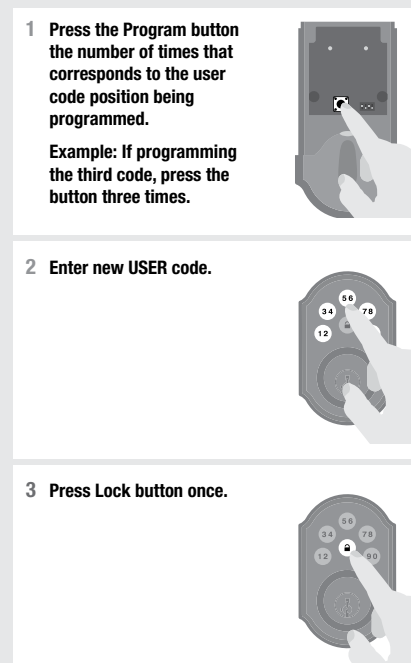
User codes can be programmed with or without a mastercode. Using a mastercode is an optional, added-security measure. It is not enabled by default. A mastercode is used to add and delete user codes, but it cannot unlock the door (unless the same code is programmed as a user code, though this is not recommended). The mastercode must be 4-8 digits.



If no button is pressed for five seconds, the system will time out, and you will need to restart the procedure.

### c Adding User Codes

#### Mastercode **NOT** enabled:



#### IF UNSUCCESSFUL

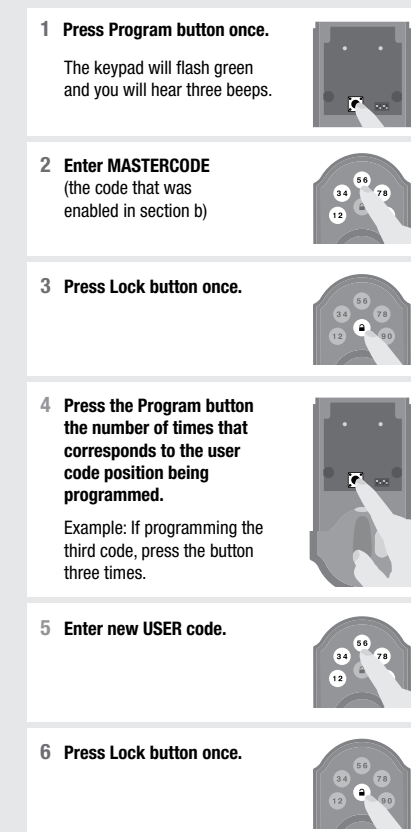
Make sure the user code is not a duplicate and that it is between 4 and 8 digits during your next attempt.

#### TEST CODE

While the door is open, test the user code to make sure it unlocks the door.

If no button is pressed for five seconds, the system will time out, and you will need to restart the procedure.

#### Mastercode **enabled**:



#### IF UNSUCCESSFUL

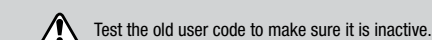
Make sure the user code is not a duplicate and that it is between 4 and 8 digits during your next attempt. Make sure to enter a valid mastercode in step 2.

#### TEST CODE

While the door is open, test the user code to make sure it unlocks the door.

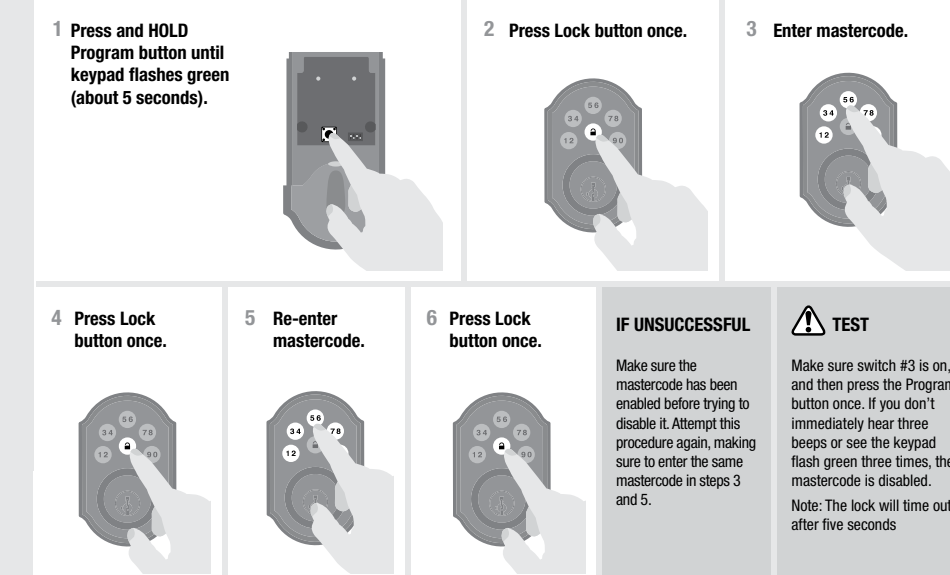
### d Deleting User Codes

In order to delete a user code, you must override the code by adding a different user code in the same position. For example, if you want to delete the third code, add a different user code in position three.



If you cannot remember the user code position, you may wish to perform a factory reset to delete all codes associated with the lock. See section "G."

### e Disabling and Deleting the Mastercode



If no button is pressed for five seconds, the system will time out, and you will need to restart the procedure.

## E Regulatory Compliance

This product complies with standards established by the following regulatory bodies:

- Federal Communications Commission (FCC)
- Industry Canada

#### FCC

This device complies with Part 15 of the FCC Rules. Operation is subject to the following two conditions: (1) this device may not cause harmful interference, and (2) this device must accept any interference received, including interference that may cause undesired operation.

This equipment has been tested and found to comply with the limits for a Class B digital device, pursuant to Part 15 of the FCC Rules. These limits are designed to provide reasonable protection against harmful interference in a residential installation. This equipment generates, uses, and can radiate radio frequency energy and, if not installed and used in accordance with the instructions, may cause harmful interference to radio communications. However, there is no guarantee that interference will not occur in a particular installation. If this equipment does cause harmful interference to radio or television reception, which can be

determined by turning the equipment off and on, the user is encouraged to try to correct the interference by one or more of the following measures:

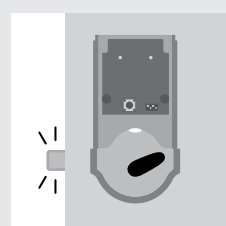
- Reorient or relocate the receiving antenna.
- Increase the separation between the equipment and receiver.
- Connect the equipment into an outlet on a circuit different from that to which the receiver is connected.
- Consult the dealer or an experienced radio/TV technician for help.

**IMPORTANT!** Changes or modifications not expressly approved by the manufacturer could void the user's authority to operate the equipment.

#### Industry Canada

This device complies with Industry Canada licence-exempt RSS standard(s). Operation is subject to the following two conditions: (1) this device may not cause interference, and (2) this device must accept any interference, including interference that may cause undesired operation of the device.

## F Troubleshooting



**Problem:** The latch bolt is not moving in the correct direction and the turnpiece will not rotate.

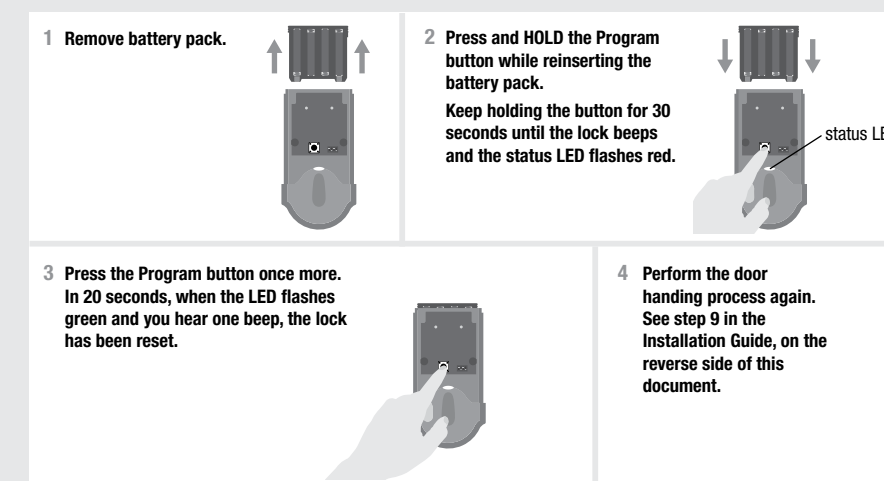
**Reason:** The door handing process was not executed during installation, and the lock does not know the orientation of the door.

**Solution:** Perform the door handing process, step 9 in the installation guide.

For more troubleshooting, download the online Troubleshooting Guide, available at [www.kwikset.com](http://www.kwikset.com).

## G Factory Reset

A factory reset will delete all codes associated with the lock.



## H Important Safeguards

- Read all instructions in their entirety.
- Familiarize yourself with all warning and caution statements.
- Remind all family members of safety precautions.
- Restrict access to your lock's back panel and routinely check your settings to ensure they have not been altered without your knowledge.
- Protect your user codes and mastercode.
- Dispose of used batteries according to local laws and regulations.

**CAUTION:** Prevent unauthorized entry. Since anyone with access to the back panel can change the user codes, you must restrict access to the back panel and routinely check the user codes to ensure they have not been altered without your knowledge. The use of a mastercode can help protect your system's settings.

**WARNING:** This Manufacturer advises that no lock can provide complete security by itself. This lock may be defeated by forcible or technical means, or evaded by entry elsewhere on the property. No lock can substitute for caution, awareness of your environment, and common sense. Builder's hardware is available in multiple performance grades to suit the application. In order to enhance security and reduce risk, you should consult a qualified locksmith or other security professional.