



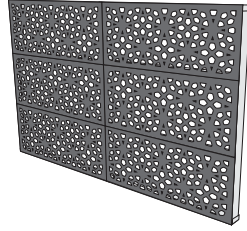
INSTALLATION INSTRUCTIONS

MODINEX Indoor/Outdoor Panels

Follow these instructions and recommendations for a professional installation within warranty, and to avoid damaging the panel.

Mounting Options

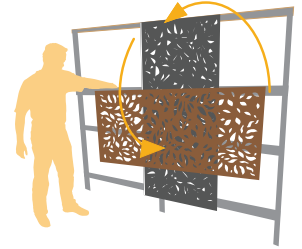
Mounts to walls, fences and flat surfaces, and to timber or metal frames.



Face-mounted Construction



Window-framing Construction



Panels can be mounted in any orientation.

PLEASE READ BEFORE YOU BEGIN: We recommend following best building practices for installing these panels, in accordance with their intended purpose. We warranty the material integrity of our product, but the installer assumes responsibility for the installation. If in doubt, consult a professional. In some cases, building approval may be required for decorative or privacy panels. We recommend checking with the proper authorities to determine if any building codes or standards apply to your project.

MODINEX panels are designed for vertical mounting only, as in a wall or fence installation. Horizontal mounting, as in a roof or ceiling position, is not recommended and is not covered by the Lifetime Limited Warranty.

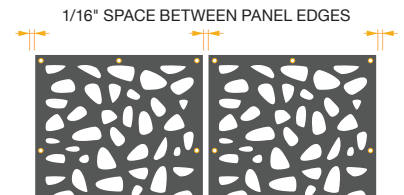
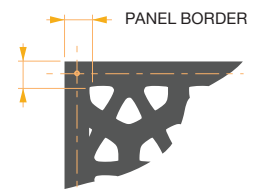
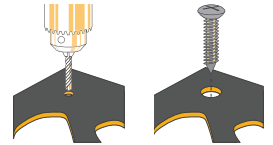
SCREWS:

(Mounting screws are not included with MODINEX panels.)

- Use screws with a diameter of 1/8" or smaller.
- Use washers where appropriate.
- Screws should be long enough to penetrate a minimum of 1" into the structure behind the panels.
- Deck screws or Phillips wood screws are good options.
- Use galvanized screws for outdoor applications.

MOUNTING WITH SCREWS

1. Pre-drill screw holes before mounting.
2. Holes should be drilled at least 1/16" larger than the screw diameter to allow for expansion and contraction.
3. Position drill holes as close to the center of the panel border (space between edge and cut-out pattern) as is practically possible.
4. Attach panels every 12" to 18" around the entire panel border. Attaching all four sides will secure the panels and help keep them straight. **DO NOT** overtighten screws to avoid damaging the panel.
5. Where multiple sheets are being installed adjoining each other (at side or top), leave a minimum space of 1/16" between the panel edges, on all sides, to allow for thermal expansion.
6. For an aesthetically pleasing effect, use painted screws to match the panel color. LED light strips can be added inside a frame behind the panel for a backlit effect.



MOUNTING WITH ADHESIVE

Follow instructions #4 & #5 for installations with screws (above). We highly recommended the use of screws in addition to adhesive.

LIFETIME LIMITED WARRANTY

MODINEX panels are warranted against peeling, rotting, cracking, blistering, warping, and abnormal discoloration/fading under normal atmosphere and weather conditions. This limited warranty does not cover damage resulting from misuse, improper storage or handling, improper installation, or any horizontal roofing/ceiling applications.