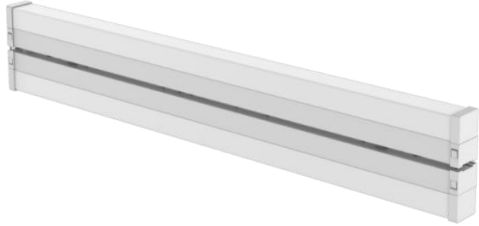




PRODUCT SPEC SHEET LED LIGHT FIXTURES



PRODUCT DESCRIPTION



8 ft. Foldable LED High Output Commercial Strip Light

Model #	Fixture Category	Certifications
WS-WR2A100A1-40	Striplights	ETL, DLC
SKU#	1005002319	

Product Overview

The Commercial Electric 8 ft. Integrated LED Slim Commercial Strip light produces an indirect illumination using state of the art energy efficient LED lighting that illuminates while reducing glare. Each Commercial Electric integrated LED Slim Commercial strip light is constructed from high quality aluminum and superior materials to ensure an enduring performance for years to come. The innovative design of the slim commercial strip light allows for the two 4 ft. striplights to simply unfold to obtain an 8 ft. commercial strip light, while maintaining uniform illumination. Easy surface mount installation due to slim and light weight design. Ideal for unit or row installations in commercial applications. While each unit uses only 90-Watt of power, each energy efficient LED strip light produces 10000 Lumens. The high performance 4000K (Bright White) LED chips are rated to last for 50,000-hours of use. These LED striplights are linkable up to 3 fixtures. Clip and connector for linking are included in each package. Ideal for garages, laundry rooms and closets.

Benefits	Construction	Wattage	Installation	Lumens
<ul style="list-style-type: none"> High performance LEDs produce 10000 lumens 	Metal	90W	Direct Wire	10000
<ul style="list-style-type: none"> These LED striplights are linkable up to 3 fixtures. 	Shatterproof Acrylic Lens		Surface Mount	
<ul style="list-style-type: none"> Ideal for unit or row mount installations in commercial application. 				
<ul style="list-style-type: none"> Fold open to 8ft fixture with no additional wiring 				

Lamp Life	Fixture Type	Fixture Features	Correlated Color Temperature	Color Rendering Index	Dimming
50000	Integrated LED Replaces 8ft T8 and T12HO Fixtures	High Efficacy up to 111 lumens/watt	4000K	80 CRI	0-10v to 10%

Trim	Finish	Rating	Electrical	Compliance	Warranty
Metal	White	IC Rated Damp	120V-277V	ETL, DLC	5 year for fixture

Dimensional Diagram	Product Weight	Certifications
Assembled Dimensions: 2.4in W x 94.4in L x 2.9in. H	8.14 lbs	

