



Specifications

Glacier Bay Constructor 4 in. 2-Handle Low-Arc Bathroom Faucet

FEATURES

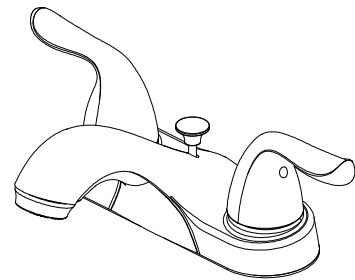
- Requires 3-Hole Sink with 4" On-Center
- 1/2" IPS Connections
- Max Flow Rate: 1.2 gpm (4.5 L/min) at 60 psi
- Max Countertop Thickness: 1 1/8"
- Spout Reach: 4 3/16"
- Spout Height: 3 7/32"
- 1/4 Turn Washerless Valve for Lifetime Drip-free Operation
- With ABS Pop-up
- With Zinc Lever Handle
- Exposed Aerator

CODE COMPLIANCE

- IAPMO Certified: ASME A112.18.1/CSA B125.1
- Compliant to NSF/ANSI 61 Section 9
- Compliant to NSF/ANSI 372
- Calgreen Certified
- EPA WaterSense Certified
- Meets AB 1953 Lead Standard
- ADA Compliant

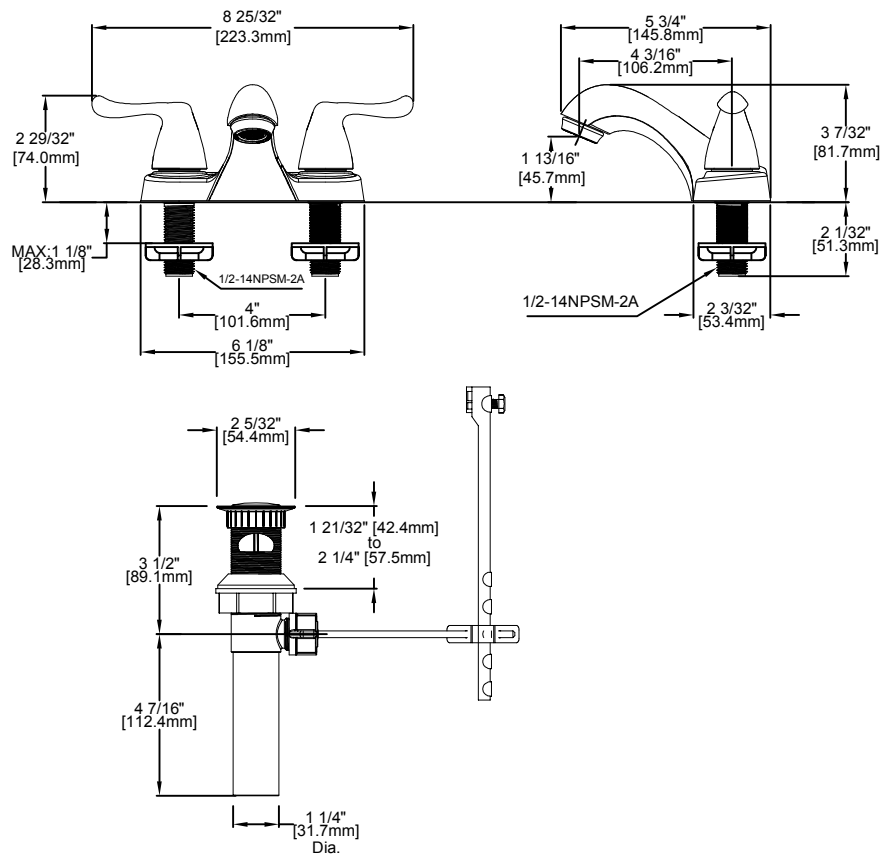


MODEL	YOW SKU#	FINISH
67499W-6304	715932	Brushed Nickel PVD
67499W-6327H2	703418	Mediterranean Bronze
67499W-P001	703427	Polished Chrome
67499W-P004	703424	Brushed Nickel PVD



WARRANTY

- Limited Lifetime Warranty



INSTALLATION DIMENSIONS

Call 1-855-HD-GLACIER if you have any questions