



Use and Care Guide

2 in. ABS Heavy Duty Sewage Pump Check Valve

Item # 1001091726
Model # THD1026

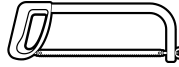
EVERBILT



TOOLS REQUIRED

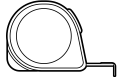


Safety Goggles



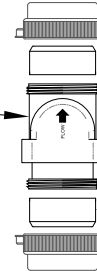
Hacksaw or PVC Cutter

Tape Measure



PACKAGE CONTENTS

Check Valve Body



2 x Compression Nuts

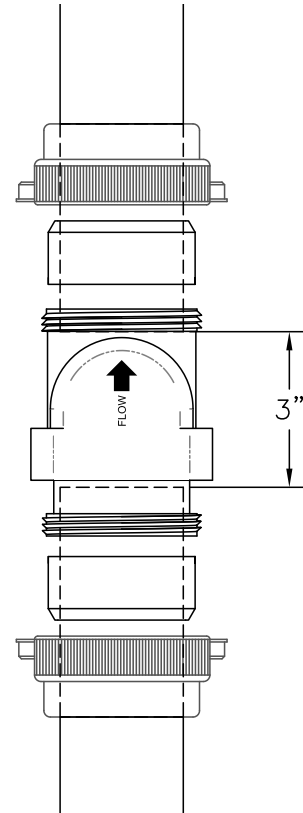
2 x Compression Seals

Installation

NOTE: This check valve is to be installed in a vertical position only.

This check valve is not intended for ground burial or outdoor use.

1. Unplug your pump.
2. Close the shut off valve above your check valve if you have one.
3. Disconnect the discharge pipe below your existing check valve.
4. Drain the discharge pipe above the check valve into and remove the old check valve.
5. Remove the compression nuts and seals from your new check valve.
6. Ensure the space between the two pipe ends is 3 inches.
7. Slide the nuts and seals on the pipe ends as shown.
8. Install your new check valve, with the flow arrow pointing upward, away from the pump, by inserting each pipe end into the check valve.
9. Slide the compression nuts and seals onto the check valve, and **hand-tighten** the nuts to ensure a water tight seal. **Do not overtighten.**
10. Plug in your pump. Cycle your system a few times and check for leaks. Retighten any nuts if necessary. **Do not overtighten.**



Safety Information



WARNING: Always disconnect power to your pump and release system pressure before servicing.

Warranty

This product is warranted to the original consumer purchaser to be free from defects in material and workmanship for a period of one year from the date of purchase. For additional details and questions, please contact Everbilt Customer Service at 1-877-297-6069.

EVERBILT

HOMEDEPOT.com

Please contact 1-877-297-6069 for further assistance.