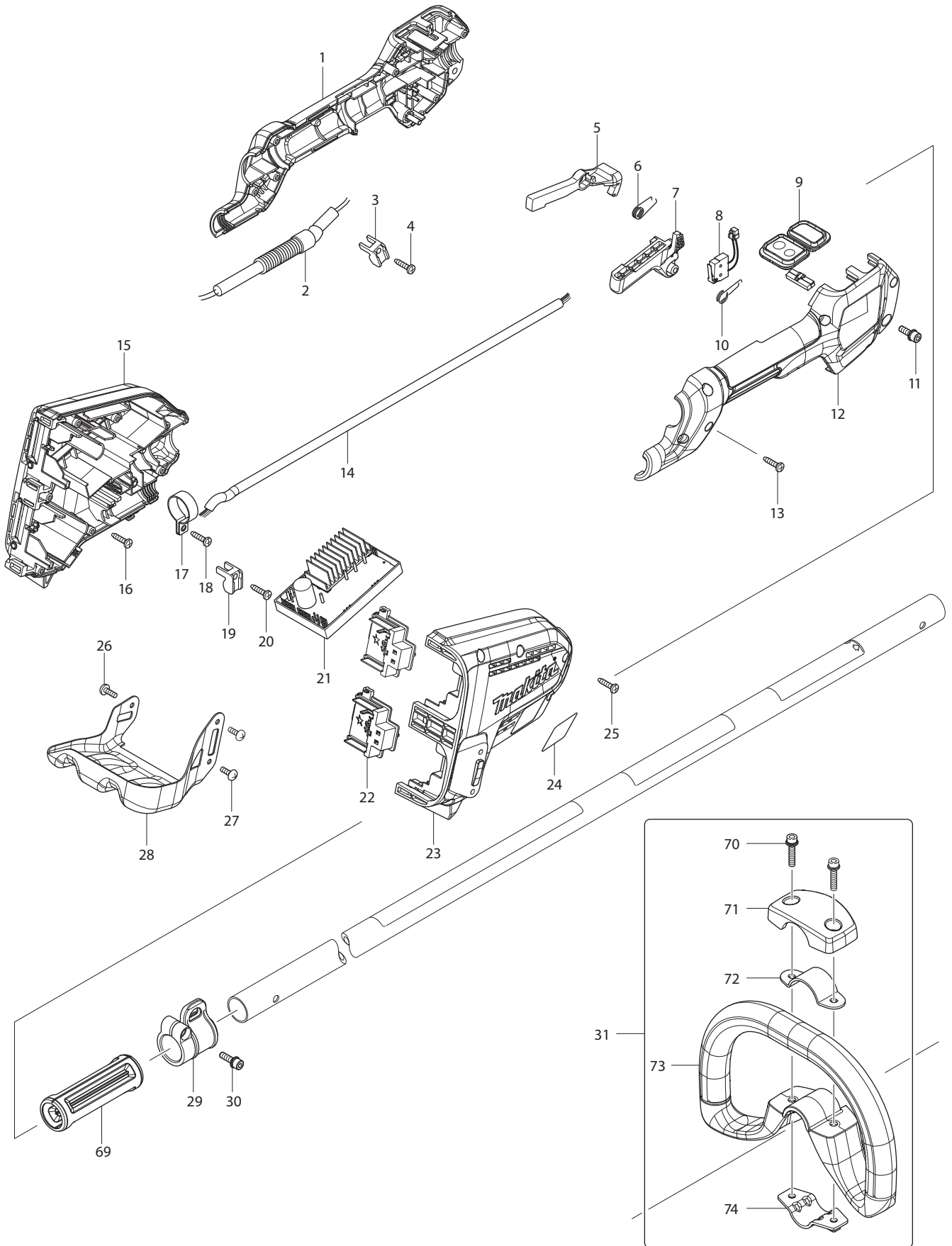


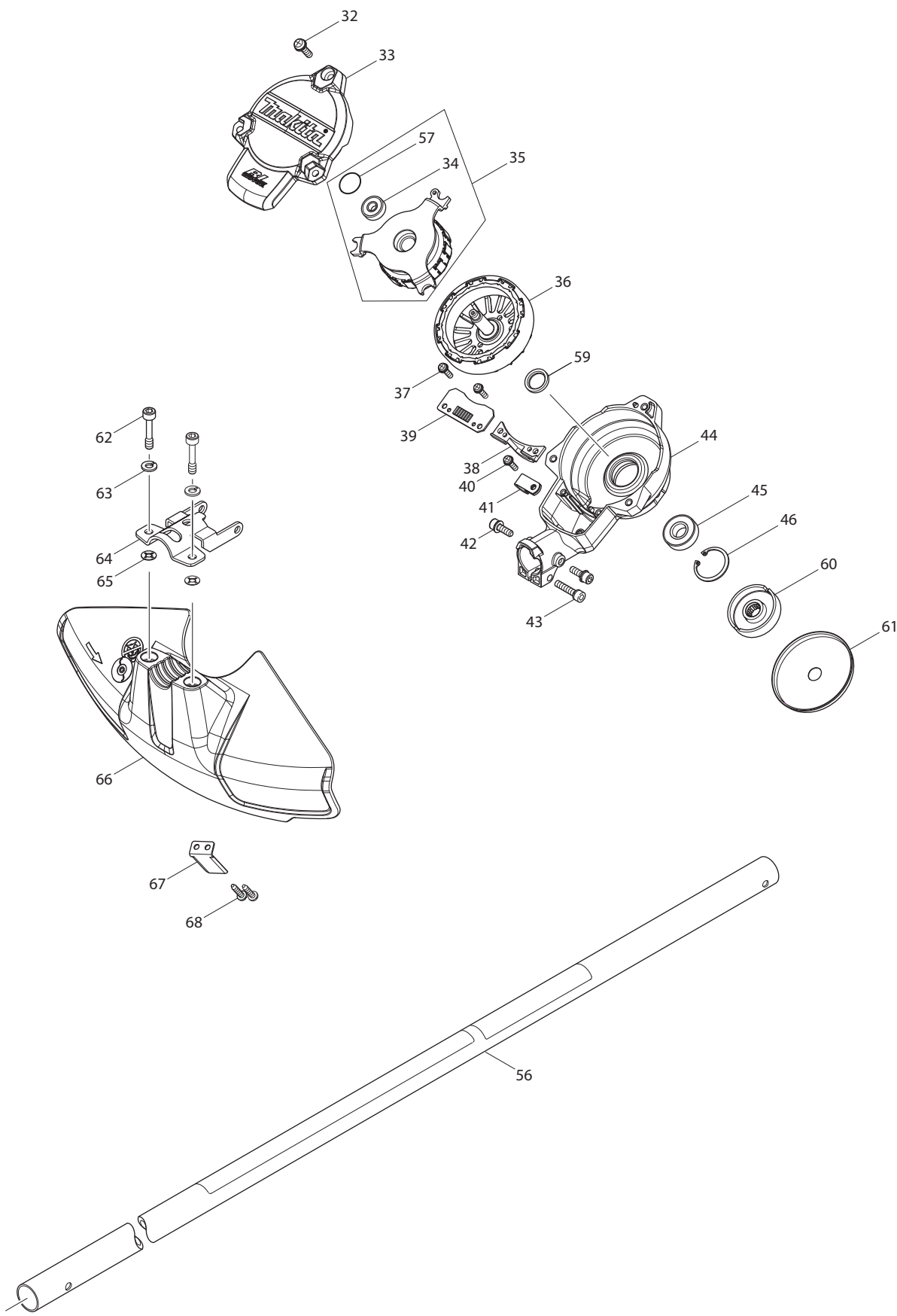
## Model XBU02Z Parts List

A = Standard Equipment

O = Circuit Diagram

| Item# | Part#        | Description                   | Q'ty | Unit |
|-------|--------------|-------------------------------|------|------|
| 001   | 266326-2     | TAPPING SCREW 4X18            | 4    | PC.  |
| 002   | 455912-6     | REAR COVER                    | 1    | PC.  |
| 003   | 644808-8     | TERMINAL                      | 2    | PC.  |
| 004   | 183A79-3     | HOUSING SET                   | 1    |      |
|       | C10 263005-3 | RUBBER PIN 6                  | 2    | PC.  |
|       | C20 806D82-2 | CAUTION LABEL                 | 1    |      |
|       | D10          | INC. 38                       |      |      |
| 005   | 233002-3     | COMPRESSION SPRING 3          | 1    | PC.  |
| 006   | 255058-6     | RIVET 2                       | 1    | PC.  |
| 007   | 620415-1     | SUB CONTROLLER                | 1    | PC.  |
| 008   | 271427-3     | DIAL 28                       | 1    | PC.  |
| 009   | 650709-0     | SWITCH C3JW-1A-P              | 1    | PC.  |
| 010   | 233101-1     | COMPRESSION SPRING 4          | 1    | PC.  |
| 011   | 455913-4     | SWITCH LEVER                  | 1    | PC.  |
| 012   | 418881-2     | LOCK ON BUTTON                | 1    | PC.  |
| 013   | 233092-6     | COMPRESSION SPRING 5          | 1    | PC.  |
| 014   | 418881-2     | LOCK ON BUTTON                | 1    | PC.  |
| 015   | 143166-4     | CONTROLLER COMPLETE           | 1    | PC.  |
| 016   | 143146-0     | CENTER CASE COMPLETE          | 1    | PC.  |
|       | C10 263005-3 | RUBBER PIN 6                  | 2    | PC.  |
| 017   | 266326-2     | TAPPING SCREW 4X18            | 2    | PC.  |
| 018   | 264111-7     | CORNED DISK SPRING HEX.NUT M5 | 1    | PC.  |
| 019   | 253194-2     | FLAT WASHER 5                 | 1    | PC.  |
| 020   | 240158-5     | FAN 110                       | 1    | PC.  |
| 021   | 424721-4     | RUBBER RING 115               | 1    | PC.  |
| 022   | 455907-9     | MOTOR HOUSING                 | 1    | PC.  |
| 023   | 424194-1     | RUBBER RING 8                 | 1    | PC.  |
| 024   | 424194-1     | RUBBER RING 8                 | 1    | PC.  |
| 025   | 424721-4     | RUBBER RING 115               | 1    | PC.  |
| 026   | 629153-2     | STATOR DC36V                  | 1    | PC.  |
| 027   | 253184-5     | FLAT WASHER 5                 | 2    | PC.  |
| 028   | 266326-2     | TAPPING SCREW 4X18            | 2    | PC.  |
| 029   | 253835-0     | FLAT WASHER 8                 | 1    | PC.  |
| 030   | 210040-2     | BALL BEARING 698LLU           | 1    | PC.  |
| 031   | 519366-2     | ROTOR ASS'Y                   | 1    | PC.  |
|       | D10          | INC. 30,32                    |      |      |
| 032   | 210022-4     | BALL BEARING 626DDW           | 1    | PC.  |
| 033   | 455908-7     | MOTOR HOUSING COVER           | 1    | PC.  |
| 034   | 455909-5     | CAP                           | 1    | PC.  |
| 035   | 265935-4     | TAPPING SCREW 3X20            | 4    | PC.  |
| 036   | 455914-2     | FRONT NOZZLE                  | 1    | PC.  |
| 037   | 850U43-6     | XBU02 NAME PLATE              | 1    |      |
| 038   | 183A79-3     | HOUSING SET                   | 1    |      |
|       | C10 263005-3 | RUBBER PIN 6                  | 2    | PC.  |
|       | C20 806D82-2 | CAUTION LABEL                 | 1    |      |
|       | D10          | INC. 4                        |      |      |
| 039   | 266326-2     | TAPPING SCREW 4X18            | 12   | PC.  |
| 040   | 266326-2     | TAPPING SCREW 4X18            | 2    | PC.  |
| A02   | 455915-0     | LONG NOZZLE                   | 1    | PC.  |
| D01   | 654510-5     | INSULATED CONNECTOR 5.5-SD    | 3    | PC.  |





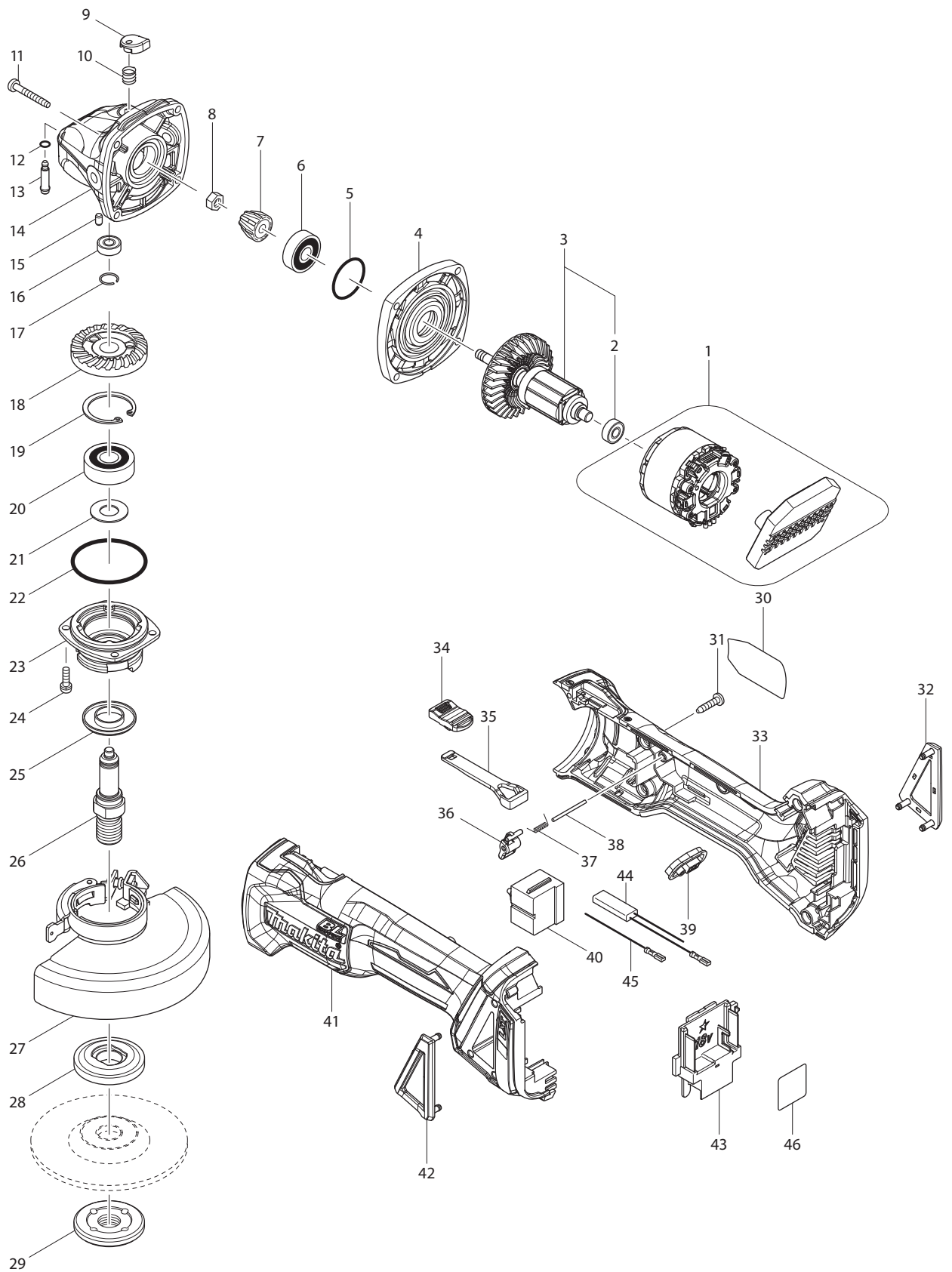
## Model XRU09Z Parts Price List

A = Standard Equipment

O = Circuit Diagram

| Item# | Part#    | Description              | Q'ty Unit |
|-------|----------|--------------------------|-----------|
| 001   | 183A19-1 | GRIP SET                 | 1         |
|       | D10      | INC. 12                  |           |
| 002   | 699068-7 | POWER SOPPLY CORD UNIT   | 1 PC.     |
| 003   | 687261-5 | STRAIN RELIEF            | 1 PC.     |
| 004   | 266326-2 | TAPPING SCREW 4X18       | 1 PC.     |
| 005   | 455629-1 | LOCK OFF LEVER           | 1         |
| 006   | 233621-5 | TORSION SPRING 9         | 1         |
| 007   | 455625-9 | SWITCH LEVER             | 1         |
| 008   | 632E26-0 | SWITCH UNIT              | 1 PC.     |
| 009   | 143977-7 | SUB CONTROLLER COMPLETE  | 1         |
| 010   | 233612-6 | TORSION SPRING 10        | 1 PC.     |
| 011   | 922228-9 | H.S.H.BOLT M5X18 WITH WR | 1 PC.     |
| 012   | 183A19-1 | GRIP SET                 | 1         |
|       | D10      | INC. 1                   |           |
| 013   | 266326-2 | TAPPING SCREW 4X18       | 6 PC.     |
| 014   | 699067-9 | POWER SUPPLY CORD UNIT   | 1 PC.     |
| 015   | 183A64-6 | HOUSING SET              | 1         |
|       | C10      | 263005-3 RUBBER PIN 6    | 4 PC.     |
|       | D10      | INC. 23                  |           |
| 016   | 266326-2 | TAPPING SCREW 4X18       | 3 PC.     |
| 017   | 346248-3 | CLAMP 24                 | 1 PC.     |
| 018   | 266326-2 | TAPPING SCREW 4X18       | 1 PC.     |
| 019   | 687261-5 | STRAIN RELIEF            | 1 PC.     |
| 020   | 266326-2 | TAPPING SCREW 4X18       | 1 PC.     |
| 021-1 | 144369-3 | CONTROLLER COMPLETE      | 1         |
| 022   | 644808-8 | TERMINAL                 | 2 PC.     |
| 023   | 183A64-6 | HOUSING SET              | 1         |
|       | C10      | 263005-3 RUBBER PIN 6    | 4 PC.     |
|       | D10      | INC. 15                  |           |
| 024   | 852F91-1 | XRU09 NAME PLATE         | 1         |
| 025   | 266326-2 | TAPPING SCREW 4X18       | 7 PC.     |
| 026   | 251314-2 | + SCREW M4X12            | 1 PC.     |
| 027   | 251314-2 | + SCREW M4X12            | 2 PC.     |
| 028   | 346858-6 | BATTERY GUARD            | 1         |
| 029   | 168478-4 | HANGER                   | 1 PC.     |
| 030   | 922228-9 | H.S.H.BOLT M5X18 WITH WR | 1 PC.     |
| 031   | 195626-2 | LOOP HANDLE SET          | 1 PC.     |
|       | D10      | INC. 70-74               |           |
| 032   | 911233-1 | PAN HEAD SCREW M5X20     | 3 PC.     |
| 033   | 455626-7 | TOP COVER                | 1         |
| 034   | 210062-2 | BALL BEARING 607ZZ       | 1 PC.     |
| 035   | 529146-8 | STATOR ASS'Y             | 1 PC.     |
|       | D10      | INC. 34,57               |           |
| 036   | 619368-9 | ROTOR                    | 1 PC.     |
| 037   | 911128-8 | P.H.SCREW M4X16 WITH WR  | 2 PC.     |
| 038   | 455628-3 | INNER COVER              | 1         |
| 039-1 | 620562-8 | CONTROLLER B             | 1         |
| 040   | 911128-8 | P.H.SCREW M4X16 WITH WR  | 1 PC.     |
| 041   | 687042-7 | STRAIN RELIEF            | 1 PC.     |

|     |              |                             |       |
|-----|--------------|-----------------------------|-------|
| 042 | 922223-9     | H.S.H.BOLT M5X16 WITH WR    | 2 PC. |
| 043 | 922241-7     | HEX. SOCKET HEAD BOLT M5X25 | 1 PC. |
| 044 | 143039-1     | MOTOR HOUSING COMPLETE      | 1 PC. |
| 045 | 211131-2     | BALL BEARING 6001DDW        | 1 PC. |
| 046 | 962106-1     | RETAINING RING R-28         | 1 PC. |
| 056 | 143856-9     | PIPE COMPLETE L             | 1     |
|     | C10 809N08-3 | CAUTION LABEL               | 1     |
|     | C20 819312-8 | MAKITA LOGO LABEL           | 1 PC. |
| 057 | 213325-5     | O RING 19                   | 1 PC. |
| 059 | 326586-9     | RING 14                     | 1 PC. |
| 060 | 326518-6     | RECEIVE WASHER A            | 1     |
| 061 | 346622-5     | GUARD                       | 1 PC. |
| 062 | 266579-3     | HEX SOCKET HEAD BOLT M6X30  | 2 PC. |
| 063 | 942151-2     | SPRING WASHER 6             | 2 PC. |
| 064 | 346073-2     | PROTECTOR CLAMP             | 1 PC. |
| 065 | 413143-3     | WASHER                      | 2 PC. |
| 066 | 455926-5     | PROTECTOR                   | 1     |
| 067 | 346855-2     | CUTTER                      | 1     |
| 068 | 266326-2     | TAPPING SCREW 4X18          | 2 PC. |
| 069 | 451601-1     | SPACER 24                   | 1 PC. |
| 070 | 922243-3     | HEX. SOCKET HEAD BOLT M5X25 | 2 PC. |
| 071 | 452843-0     | CLAMP COVER B               | 1 PC. |
| 072 | 346468-9     | CLAMP 33                    | 1 PC. |
| 073 | 452841-4     | LOOP HANDLE                 | 1 PC. |
| 074 | 347094-7     | CLAMP 24                    | 1     |
| A01 | 197296-3     | CUTTER ASSEMBLY SET         | 1 PC. |
| A02 | 195246-2     | SAFETY GOGGLE               | 1 PC. |
| A03 | 783202-0     | HEX. WRENCH 4               | 1 PC. |
| A04 | 783217-7     | HEX. WRENCH 5               | 1 PC. |
| A05 | 831304-7     | ACCESSORY BAG               | 1 PC. |



## Model XAG03Z Parts List

A = Standard Equipment

O = Circuit Diagram

| Item# | Part#    | Description                    | Q'ty                 | Unit |     |
|-------|----------|--------------------------------|----------------------|------|-----|
| 001   | 629134-6 | STATOR COMPLETE                | 1                    | PC.  |     |
| 002   | 210034-7 | BALL BEARING 607LLB            | 1                    | PC.  |     |
| 003   | 519354-9 | ROTOR ASS'Y                    | 1                    |      |     |
|       | D10      | INC. 2                         |                      |      |     |
| 004   | 319214-3 | GEAR HOUSING COVER             | 1                    |      |     |
| 005   | 213445-5 | O-RING 26                      | 1                    | PC.  |     |
| 006   | 210042-8 | BALL BEARING 629LLB            | 1                    | PC.  |     |
| 007   | 227541-3 | SPIRAL BEVEL GEAR 10           | 1                    | PC.  |     |
| 008   | 252186-8 | HEX. NUT M6                    | 1                    | PC.  |     |
| 009   | 417771-6 | PIN CAP                        | 1                    | PC.  |     |
| 010   | 233072-2 | COMPRESSION SPRING 8           | 1                    | PC.  |     |
| 011   | 266361-0 | TAPPING SCREW 4X30             | 4                    | PC.  |     |
| 012   | 213960-9 | O RING 5                       | 1                    | PC.  |     |
| 013   | 256546-6 | SHOULDER PIN 4                 | 1                    | PC.  |     |
| 014   | 319213-5 | GEAR HOUSING                   | 1                    |      |     |
| 015   | 263002-9 | RUBBER PIN 4                   | 1                    | PC.  |     |
| 016   | 210033-9 | BALL BEARING 696ZZ             | 1                    | PC.  |     |
| 017   | 233950-6 | RING SPRING 11                 | 1                    | PC.  |     |
| 018   | 227641-9 | SPIRAL BEVEL GEAR 37           | 1                    |      |     |
| 019   | 962151-6 | RETAINING RING R-32            | 1                    | PC.  |     |
| 020   | 211129-9 | BALL BEARING 6201DDW           | 1                    | PC.  |     |
| 021   | 267113-2 | FLAT WASHER 12                 | 1                    | PC.  |     |
| 022   | 213622-9 | O RING 45                      | 1                    | PC.  |     |
| 023   | 318331-6 | BEARING BOX                    | 1                    | PC.  |     |
| 024   | 911121-2 | PAN HEAD SCREW M4X14           | 4                    | PC.  |     |
| 025   | 345464-4 | LABYRINTH RING                 | 1                    | PC.  |     |
| 026   | 324955-8 | SPINDLE A                      | 1                    | PC.  |     |
| 027   | 123144-0 | TOOLLESS WHEELCOVER 115AK ASSY | 1                    | PC.  |     |
|       | C10      | 213009-5                       | O RING 4             | 1    | PC. |
|       | C20      | 265180-1                       | PAN HEAD SCREW M5X16 | 1    | PC. |
| 028   | 224399-1 | INNER FLANGE 45                | 1                    | PC.  |     |
| 029   | 224568-4 | LOCK NUT 5/8-45                | 1                    | PC.  |     |
| 030   | 850J28-6 | XAG03 NAME PLATE               | 1                    |      |     |
| 031   | 266326-2 | TAPPING SCREW 4X18             | 5                    | PC.  |     |
| 032   | 455450-8 | DUST COVER R                   | 1                    |      |     |
| 033   | 187998-9 | MOTOR HOUSING SET              | 1                    |      |     |
|       | C10      | 263005-3                       | RUBBER PIN 6         | 2    | PC. |
|       | D10      | INC. 41                        |                      |      |     |
| 034   | 455447-7 | SWITCH KNOB                    | 1                    |      |     |
| 035   | 455446-9 | SWITCH LEVER                   | 1                    |      |     |
| 036   | 455448-5 | LEVER                          | 1                    |      |     |
| 037   | 231679-8 | TORSION SPRING 2               | 1                    |      |     |
| 038   | 268330-7 | PIN 2                          | 1                    |      |     |
| 039   | 142901-7 | INDICATOR PANEL COMPLETE       | 1                    |      |     |
| 040   | 650579-7 | SWITCH 1246.3223               | 1                    | PC.  |     |
| 041   | 187998-9 | MOTOR HOUSING SET              | 1                    |      |     |
|       | C10      | 263005-3                       | RUBBER PIN 6         | 2    | PC. |
|       | D10      | INC. 33                        |                      |      |     |
| 042   | 455449-3 | DUST COVER L                   | 1                    |      |     |
| 043   | 643899-6 | TERMINAL                       | 1                    | PC.  |     |
| 044   | 632E34-1 | RESISTOR UNIT                  | 1                    | PC.  |     |
| 045   | 632E33-3 | LEAD UNIT                      | 1                    | PC.  |     |



|     |              |                            |       |
|-----|--------------|----------------------------|-------|
| 046 | 850J33-3     | XAG03 SERIAL NO. LABEL     | 1     |
| A01 | 122910-2     | WHEEL COVER 115CK ASSEMBLY | 1 PC. |
|     | C10 213009-5 | O RING 4                   | 1 PC. |
|     | C20 265180-1 | PAN HEAD SCREW M5X16       | 1 PC. |
| A02 | 158237-4     | GRIP 36 COMPLETE           | 1 PC. |
| A03 | 782424-9     | LOCK NUT WRENCH 28         | 1 PC. |
| A04 | A-95956      | INOX GRINDING WHEEL 115MM  | 1 PC. |
| A05 | 724115-A-25  | THIN CUTTING 115           | 1 PC. |
| E01 | 805C42-5     | CAUTION LABEL              | 1     |
| D01 | 652044-2     | +BIND SCREW M3.5X5.0       | 2 PC. |
| D02 | 654509-0     | CONNECTOR 2-SD             | 1 PC. |