

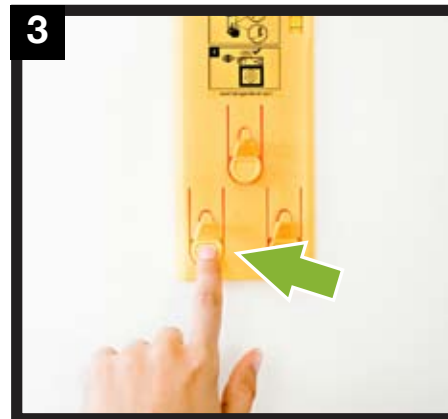
Product Information Sheet
Hang & Level™ - How To Use



1 **Place** your picture on the hook(s). Use one hook for small or light pictures, two hooks for larger, heavier pictures.



2 **Position** your picture on the wall. Find the right spot. Remove the picture without moving the tool.



3 **Press** the button(s) to mark exactly where the nail(s) goes.



4 **Hammer** the nail into the wall.



5 **Hang** your picture and then level it using the tool.



6 **Repeat** to create groupings of pictures.