



SKU # 1003 081 573
 OMS THD SKU # 1003 002 169
 Model # TY172-1824-1



Thank you!

We appreciate the trust and confidence you have placed in Home Accents through the purchase of this 84in 140 Light LED Pirate Ship and Skeleton. We strive to continually create quality products designed to enhance your home. Visit us online to see our full line of products available for your home decoration needs. Thank you for choosing Home Accents!

1-877-527-0313
 HOMEACCENTSHOLIDAY.COM

Parts List		
Locater	Name	Qty.
A	Flag	1
B	Left Half of Sail	1
C	Right Half of Sail	1
D	Upper Half of Mast	1
E	Lower Half of Mast	1
F	Handle of Oar	1
G	Paddle of Oar	1
H	Skeleton	1
I	Mast Support	1
J	Left Back Side Half of Boat	1
K	Back of Boat	1
L	Right Back Side Half of Boat	1
M	Bottom of Boat	1
N	Left Front Side Half of Boat	1
O	Right Front Side Half of Boat	1

Hardware List		
Locater	Name	Qty.
P	Cotter Pin	1
Q	Bolt & Wingnut	3
R	Ground Stake	8
S	Stabilizing String	4
T	Plastic Tie	10
U	Spare Fuse	3
V	Spare Bulb	6

ASSEMBLY INSTRUCTIONS

84in 140 Light LED Pirate Ship and Skeleton

USE AND CARE GUIDE

PLANNING ASSEMBLY

Carefully remove all the parts from the box and place them on a flat surface. Please note that many of the parts are connected by the lighting string that runs throughout the item. Remove the parts with care not to damage the lighting string or parts. Read the entire manual prior to assembly and identify all the parts included in the package against the parts list. If any parts are missing or damaged do not attempt assembly. Contact our customer service center or return the item to place of purchase with purchase receipt. Assembly of this product may require more than one person.

Pre-Operation

CAUTION: Grasp the plug to insert or remove from the power source. Do not unplug by pulling on cord.

CAUTION: The lighting string on this product is rated at 9.6 Watts (0.08Amps). Do not overload. Do not connect to another lighting string, decorative outfit or other electrical products. Before you use or re-use this product, inspect it carefully. Discard or return to place of purchase with purchase receipt if the product has cuts, damage, frayed wire insulation on cords, cracks in the socket enclosures, loose connections or exposed copper wire.

Care and Cleaning

- Carefully remove the product from wherever it is placed. This helps to avoid any undue strain or stress on the product connections and wires. If the product is placed somewhere other than the ground it should be well secured and stable.
- Wipe the unit with a damp cloth and allow the unit to dry before storing.
- Store the product neatly in a cool, dry location protected from sunlight.

Guarantee

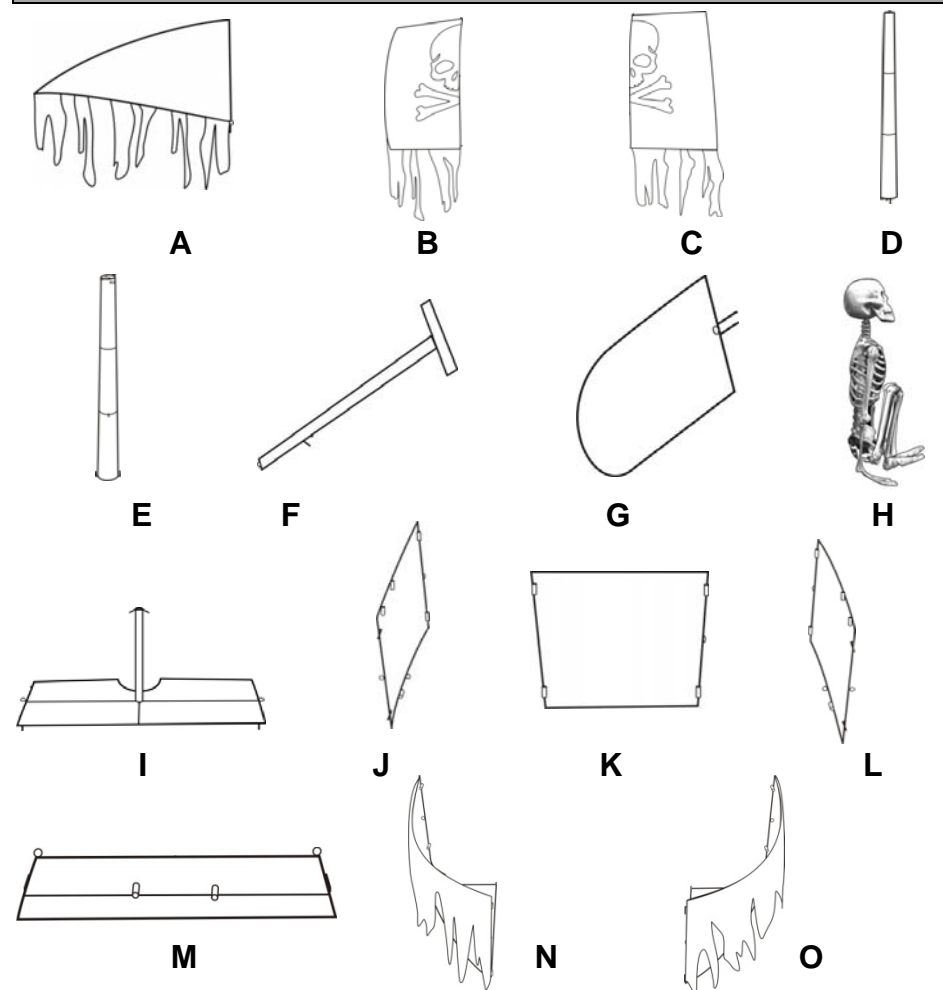
What is Covered

The product is intended for residential seasonal use for 90 days per year. This product is covered by a 90 days limited guarantee due to defects in material and workmanship. Return the product with purchase receipts to the location of purchase for refund within 90 days of purchase.

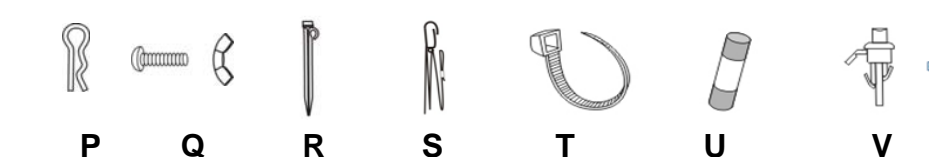
What is Not Covered

This warranty does not cover commercial use, normal wear and tear, products not used in accordance with directions provided on or with the product, burn out of bulbs or LEDs, batteries, products that have been subjected to unauthorized repair and/or modification and damage caused by shipping and improper handling, alterations, misuse or accidents. Questions, problems, missing parts? Before returning to the store, call Home Accents Holiday Customer Service 8 a.m.-6 p.m., EST, Monday-Friday

Diagram of Parts



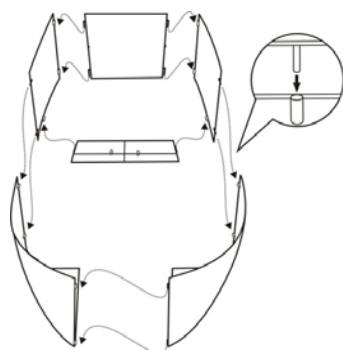
Hardware



ASSEMBLY

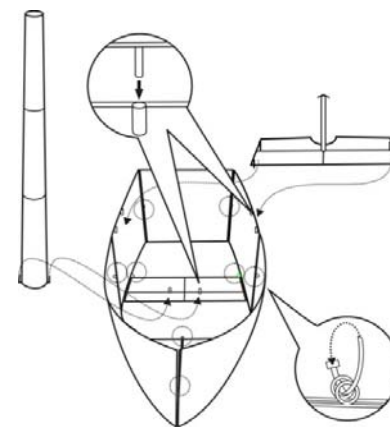
1 Assembling the Boat

Insert the connecting rods on the Back of Boat (K) into the matching holes of Left and Right Back Side Halves of Boat (J & L). Insert the connecting rods on the Bottom of Boat (M) into the holes on the bottom of the Left and Right Back Side Halves of Boat (J & L) then fasten them together at the connecting loops with the Plastic Ties (T). Align the connecting rods at the front of the Left and Right Front Side Half of Boat (N & O) then fasten them together with the Plastic Ties (T). Insert the connecting rods on the Left and Right Back Side Halves of Boat (J & L) into the holes on the Left and Right Front Side Halves of Boat (N & O) then fasten them together at connecting loops with the Plastic Ties.



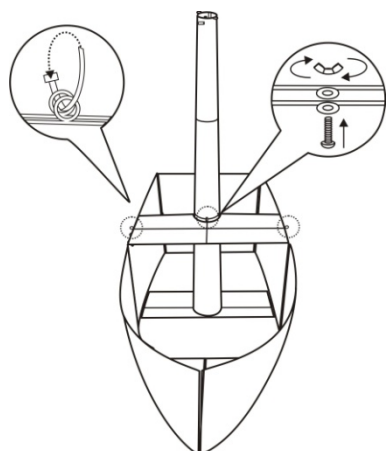
2 Assembling the Mast and Mast Support to the Boat

Insert the connecting rods at the bottom of the Lower Half of Mast (E) into the matching holes on the Bottom of Boat (M). Insert the connecting rods on the bottom of the Mast Support (I) into the matching holes on the top of the Left and Right Back Side Halves of Boat (J & L). Fasten all parts together at the connecting loops with Plastic Ties. Note: The Lower Half of Mast should rest in the slot on the back side of the Mast Support.



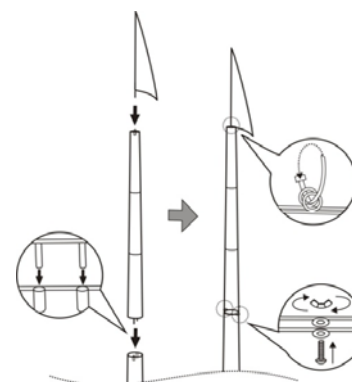
3 Securing the Mast and Mast Support

Secure the Lower Half of Mast (E) and Mast Support (I) together at the connecting loops with the Plastic Ties (T) on the corners and with the Bolt & Wingnut (Q) in the middle.



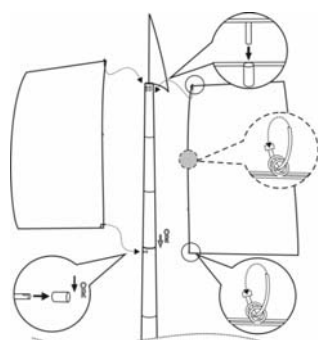
4 Assembling the Mast and placing the Flag atop the Mast

Insert the connecting rods on the bottom of the Upper Half of Mast (D) into the matching holes on the top of the Lower Half of Mast (E) and fasten them together at the connecting loop with Bolt & Wingnut. Place the Flag (A) in the top of Upper Half of Mast (D) and fasten them together at the connecting loop with the Plastic Ties (T).



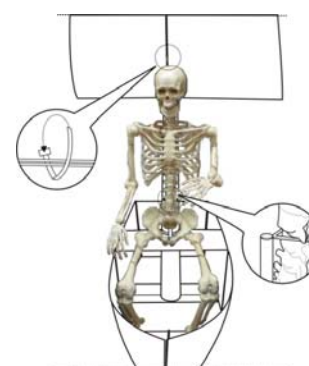
5 Assembling the Sail to the Mast

Hang the connecting rods on the Left and Right Halves of Sail (B & C) in the holes at the top of Upper Half of Mast (D). Insert the connecting rods on the bottom of the Left Half of Sail (B) into the matching holes on the bottom of the Upper Half of Mast (D) and fasten them with the Cotter Pin (P). Fasten the two Halves of Sail together at the connecting loops with the Plastic Ties (T).



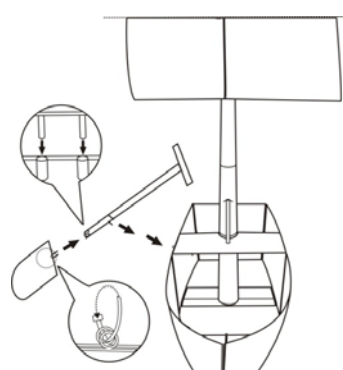
6 Securing the Skeleton to the Boat

Place the Skeleton in the Boat sitting down on the Mast Support facing toward the front of the Boat. Locate the cord on the back of the Skeleton's head and fasten the cord to the Sail. Hang the Skeleton on two rods at the top of the Mast Support pole.



7 Assembling the Oar

Insert the connecting rods at the bottom of the Handle of Oar (F) into the holes at the top of the Paddle of Oar (G) and fasten them together at the connecting loops with the Plastic Ties. Insert the connecting rods located on the middle of the Handle of Oar into the matching holes at the top of Left Front Side Half of Boat.



8 Assembling the Stabilizing Strings and Ground Stakes

Hook the plastic end of each of Stabilizing Strings (S) onto the matching loop on the Mast. Place one side of the Ground Stakes (R) through the looped end of the Stabilizing String then place into the ground with proper spacing between the Stabilizing Strings. Place the remaining Ground Stakes at the four corners of the Boat over the metal then into the Ground.

