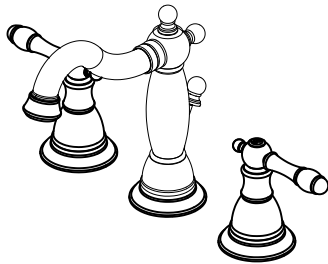




Brand Lavatory Faucets



INSTALLATION

Tools:

Adjustable wrench



Thread sealant tape



Pipe wrench



Groove joint pliers



Basin wrench



Screwdriver



Plumber's putty

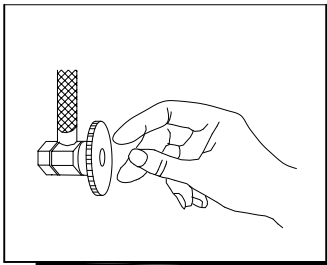


Cleaning:

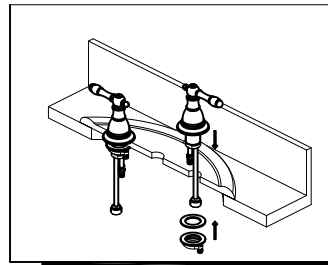
To maintain and protect the fine luster of all products, clean with a soft, damp cloth only. DO NOT USE detergents or cleansers as they may harm the protective finish.

Model Number: 120341LF & 120342LF & 110704

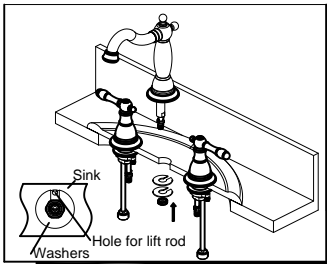
INSTALLATION STEPS: Two handle lavatory faucet



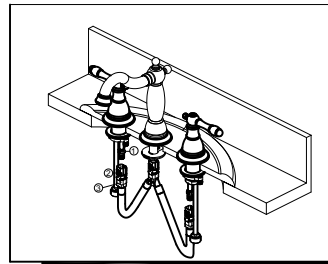
1. Shut off water supply at angle stop. Remove old faucet. Clean sink surface in preparation for new faucet.



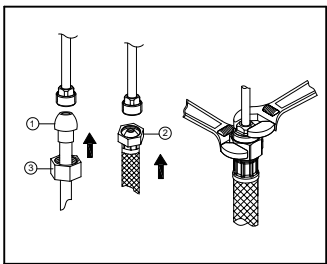
2. Slide hot and cold end valves through sink mounting holes. Make sure long tubes are installed away from spout. **Note: Hot side end valve is labeled.** Secure end valves with washers and nuts. Hand tighten nuts onto shank. Lock nuts into position by tightening screws.



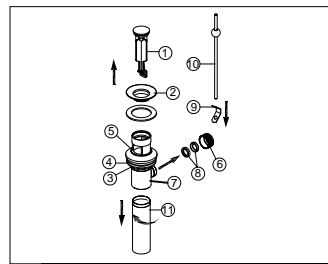
3. Place spout assembly through mounting hole in sink. Secure spout with rubber washer, metal washer and nut.



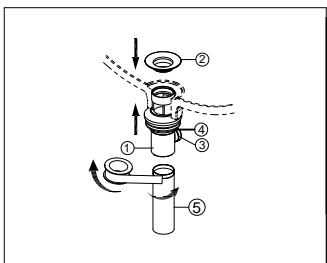
4. Align tabs (1) and tabs (2) on quick connects (3). Push quick connects firmly upward and snap onto receiving tube tab (1). Pull down moderately to ensure each connection has been made.



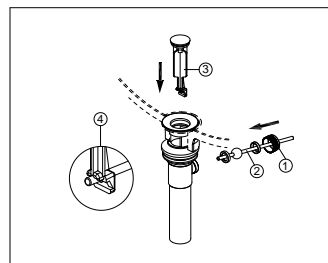
5. Making the waterline connections: Use 1/2 in. I.P.S. faucet connections (2, not included), or use the coupling nuts (3, not included) with a 3/8 in. O.D. ball-nose riser (1, not included). Before tightening the faucet connector to the water supply, apply a second wrench to the supply tube fitting. This will prevent the supply tube from moving or twisting when tightening the faucet connector. Do not overtighten.



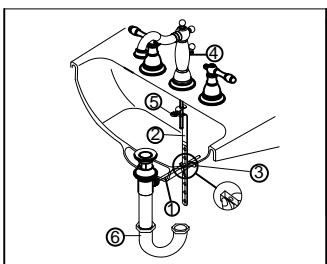
6. Remove the stopper (1) and the flange (2). Screw the brass nut (3) all the way down. Push the plastic washer (4) and the gasket (5) down. Unscrew the pivot nut (6) from the pop-up body (7) and remove the seal washers (8). Take off the spring clip (9) from the horizontal rod (10). Remove the tailpiece (11) from the pop-up body (7).



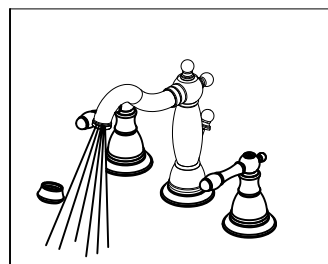
7. Apply the silicone to the underside of the flange (2). Insert the pop-up body (1) into the drain hole from below sink. Screw the flange (2) into the pop-up body (1). With the pivot hole (3) facing toward faucet, use groove joint pliers to tighten the nut (4), do not over tighten. Do not turn the pop-up while tightening the nut, or sealant may not seal drain. Clean excess putty. Apply thread sealant tape to the top threads of the tailpiece (5) in a clockwise direction, as shown and hand tighten.



8. Install the horizontal rod (2) and the stopper (3) as shown (4). Hand tighten the pivot nut (1).



9. Attach horizontal rod (1) to strap (2) using clip (3). Insert lift rod (4) into strap and tighten screw (5). Connect assembly to drain (6).

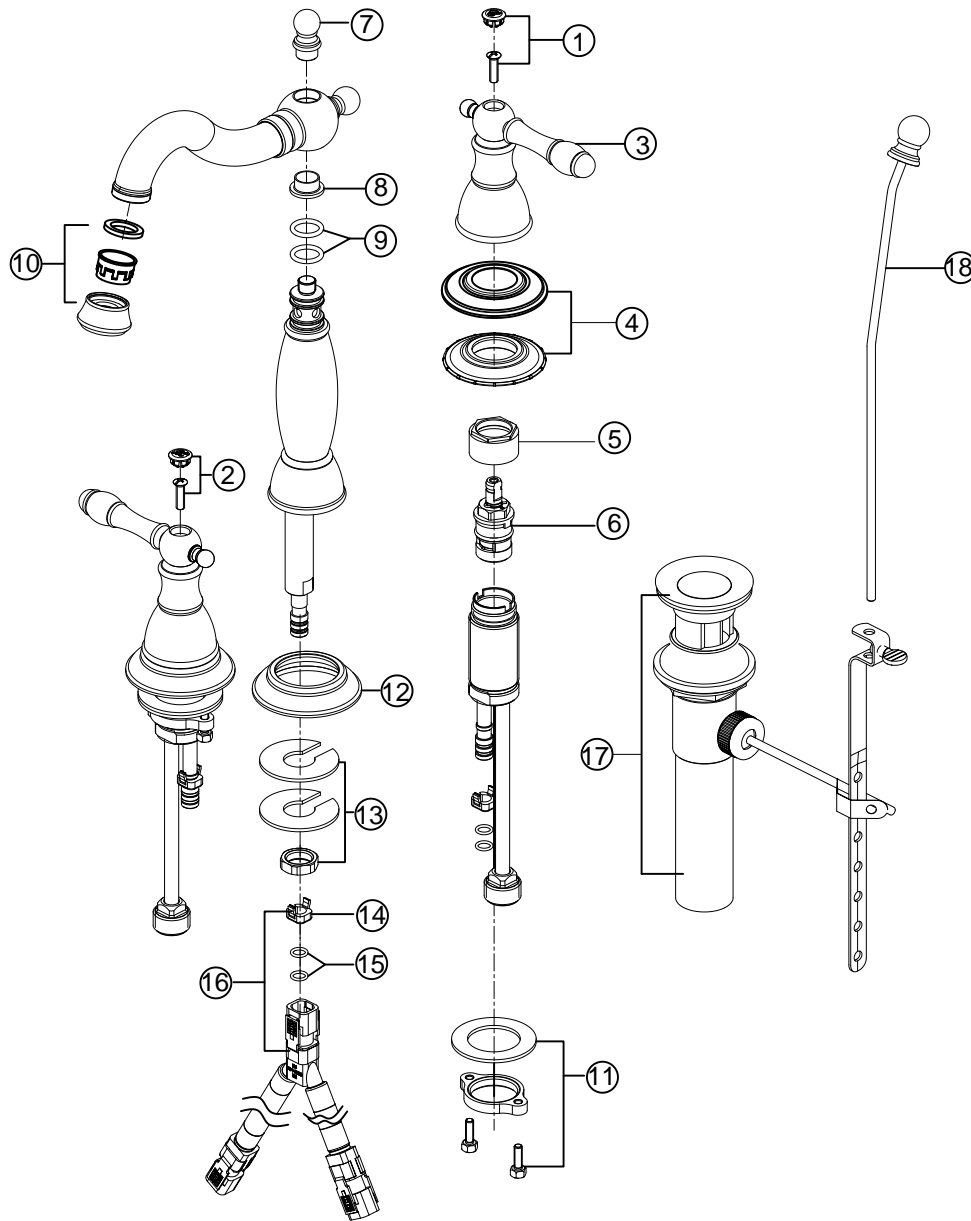


10. Important: After installation is completed, remove aerator. Turn on water supply and allow both hot and cold water to run for at least one minute each. While water is running, check for leaks. Replace aerator.



120341LF & 120342LF & 110704

Parts List



MODEL NO. 120341LF			
NO.	PART DESCRIPTION	PART NO.	QTY.
1	Handle Screw & Screw Cap (C)	33	1
2	Handle Screw & Screw Cap (H)	34	1
3	Handle Assembly	167	1
4	Flanges & Seats	119	1
5	Bonnet Nuts	41	1
6	Cartridge(H)	3	1
	Cartridge(C)	4	1
7	Cap	43	1
8	Washer	44	1
9	O-rings	45	1
10	Aerator	168	1
11	Mounting Kits	122	1
12	Spout Seat	123	1
13	Mounting Kit	169	1
14	Block	129	1
15	O-Rings	130	1
16	Hose Assembly	131	1
17	Brass Pop-Up	124020	1
18	Lift Rod & Lift Knob	47	1

MODEL NO. 120342LF			
NO.	PART DESCRIPTION	PART NO.	QTY.
1	Handle Screw & Screw Cap (C)	35	1
2	Handle Screw & Screw Cap (H)	36	1
3	Handle Assembly	171	1
4	Flanges & Seats	172	1
5	Bonnet Nuts	41	1
6	Cartridge(H)	3	1
	Cartridge(C)	4	1
7	Cap	50	1
8	Washer	44	1
9	O-rings	45	1
10	Aerator	170	1
11	Mounting Kits	122	1
12	Spout Seat	124	1
13	Mounting Kit	169	1
14	Block	129	1
15	O-Rings	130	1
16	Hose Assembly	131	1
17	Brass Pop-Up	124011	1
18	Lift Rod & Lift Knob	51	1

MODEL NO. 110704			
NO.	PART DESCRIPTION	PART NO.	QTY.
1	Handle Screw & Screw Cap (C)	325	1
2	Handle Screw & Screw Cap (H)	326	1
3	Handle Assembly	327	1
4	Flanges & Seats	328	1
5	Bonnet Nuts	41	1
6	Cartridge(H)	3	1
	Cartridge(C)	4	1
7	Cap	331	1
8	Washer	44	1
9	O-rings	45	1
10	Aerator	329	1
11	Mounting Kits	122	1
12	Spout Seat	330	1
13	Mounting Kit	169	1
14	Block	129	1
15	O-Rings	130	1
16	Hose Assembly	131	1
17	Brass Pop-Up	332	1
18	Lift Rod & Lift Knob	333	1