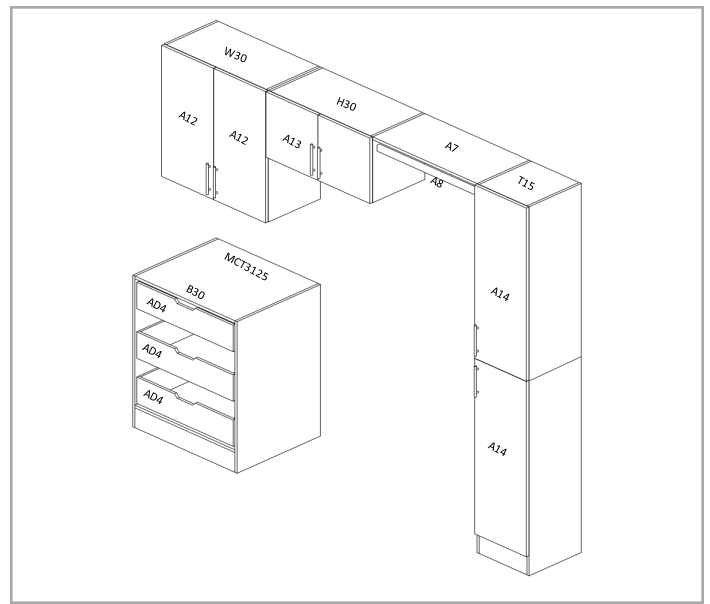


# ASSEMBLY GUIDE

## Laundry L105



**A1 & A2 Shelves behind doors. This Kit consists of 18 cartons, they are as follows:**

QUANTITY	IDENTIFIER	DESCRIPTION
2	A1	Adjustable Shelf Pack for 15" Wide Utility Tower
1	A2	Adjustable Shelf Pack for 30" Wide Wall Cabinet
1	T15	15" W x 84" H x 15" D Utility Tower
1	B30	30" W x 34" H x 24" D Base Cabinet
1	A8	45" Long Closet Hang Rod
1	A13	30"W x 15"H Door Pack for H30 Wall Cabinet (2/pack)
2	A12	15"W x 30"H Door Pack for W30 Wall Cabinet
2	A14	15"W x 40"H Door Pack for T15 or T30 Utility Towers
1	MCT3125-BK	31"W x 25.5"D Black Countertop
3	AD4	Rollout Tray (Drawer Kit) for 30" Wide Base Cabinet
1	A7	45" Long Closet Shelf Kit
1	H30	30" W x 15" H x 15" D Wall Cabinet
1	W30	30" W x 30" H x 15" D Wall Cabinet

Print this form and save with your receipt. If this kit needs to be returned for any reason, all cartons must be returned to receive full credit.

If you have any questions or need additional assistance, please contact Modifi Customer Service at **1-844-766-3434** or [customerservice@hmodifi.com](mailto:customerservice@hmodifi.com).