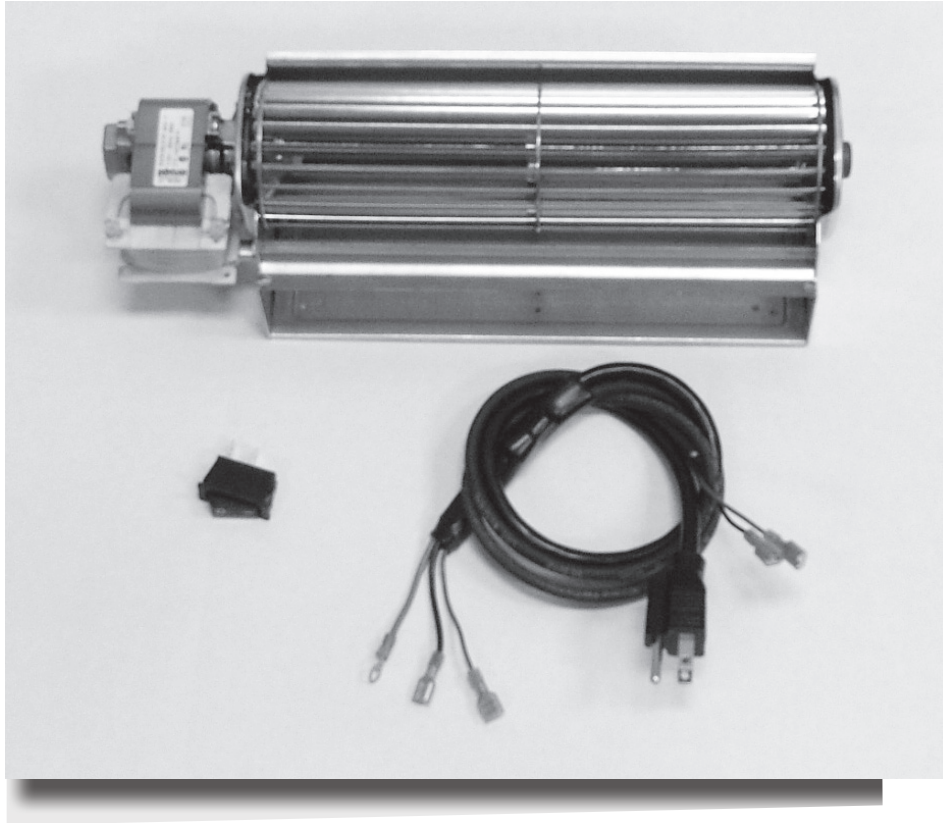


THE CHARLESTON SERIES

**BLOWER (MODEL # BL-101) FOR VENT FREE UNIVERSAL FIREBOX
MODEL NUMBERS: VFB(C)32(A,B) VFB(C)36(A,B) VFB(C)42(A,B)**



Installation Instructions: Circulating Air Blower

⚠ WARNING

If the information in this manual is not followed exactly, a fire or explosion may result causing property damage, personal injury or loss of life.

⚠ WARNING

This product contains and/or generates chemicals known to the State of California to cause cancer or birth defects, or other reproductive harm.

Installer: Leave this manual with the appliance.

Consumer: Retain this manual for future reference.

INSTALLATION INSTRUCTIONS

INSTALLER/CONSUMER SAFETY INFORMATION

READ AND SAVE THESE INSTRUCTIONS.

This book contains your installation instructions and should be kept in a safe place. For you to realize all of the advantages and use of the reliable service that has been engineered into your Sure Heat Manufacturing Fireplace, you must carefully follow all of the instructions contained in this manual regarding installation and operation of the fireplace.

It is suggested that you wear work gloves and safety glasses to protect your hands and eyes when installing your Blower Kit.

These Instructions should be read carefully in their entirety before beginning installation of the Blower Kit.

Electrical Junction Box

Wiring should be connected at provided junction box, in the firebox, prior to the installation of the Blower Kit. See instruction on page 3.

Electrical Services

If an electrical supply of 120V has been roughed in to the fireplace junction box to provide for installation of the optional blower kit, the wiring should be connected to the junction box.

NOTE: A FEW BASIC SAFETY RULES BEFORE YOU START:

- A.** Make sure you have and are using/wearing proper personal safety devices such as, but not limited to: gloves, safety eye glasses/eye protection.
- B.** Check to ensure that electrical service has been provided to the junction box located in the bottom chamber of the firebox.
- C.** Check local building codes before installation of the Blower Kit.
- D.** All wiring must be installed and/or inspected as necessary to comply with the local authority having jurisdiction.
- E.** The circuit breaker controlling the power supply to the pre-wired junction box in the appliance must be in the "OFF" position before beginning installation of the Blower Kit.

INSTALLATION

INSTRUCTIONS

Optional Electrical Junction Box

If installation of an accessory blower, or other “line-Voltage” powered accessory may be desired, you should install the J-Box accessory, and wiring at the time of fireplace installation.

IT WILL NOT BE PRACTICAL TO INSTALL THIS LATER!

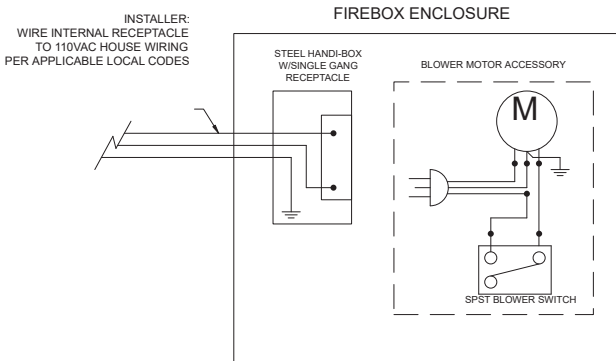
Wiring should be connected at a customer provided junction box, outside the firebox.

Electrical Services

If an electrical supply of 120V is being roughed in to the fireplace junction box to provide for future installation of the optional blower kit, the wiring should be connected to the internal J-Box (junction box) kit (PROVIDED WITH THIS ACCESSORY).

NOTE: A FEW BASIC SAFETY RULES BEFORE YOU START

1. All electrical connections (*Figure 1*) are to be made in accordance with CSA Standard C22.1 Canadian Electrical Code part 1 or with the National Electrical Code, ANSI/NFPA 70 (latest edition) and/or in accordance with local codes.
2. Make sure you have and are using/wearing proper personal safety devices such as but not limited to gloves, safety eye glasses/eye protection .
3. Check local building codes before installation of the firebox and blower kit.
4. All wiring must be installed and/or inspected as necessary to comply with the local authority having jurisdiction.



VFBC BLOWER WIRING DIAGRAM, ALL SIZES

Junction Box Wiring

1. Remove (2) J-Box retaining screws. (*See Figure 3*)
2. Install J-Box Assembly into Fireplace (*See Figure 4*)
3. Attach household 110 VAC supply wire to Receptacle.
4. Tighten Cable Clamp, install Receptacle and Cover
6. Verify operation of outlet assembly in Fireplace

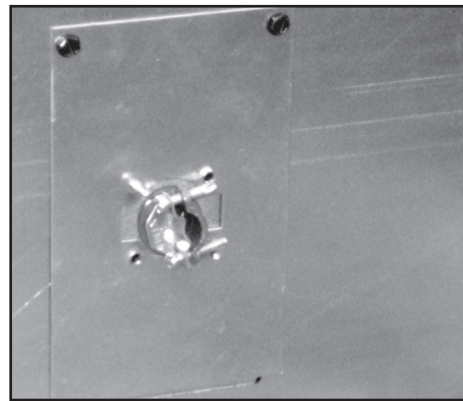


Figure. 2

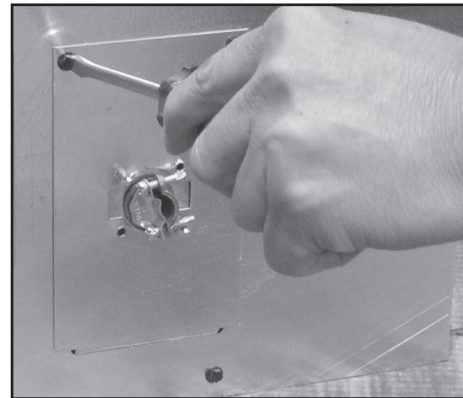


Figure 3



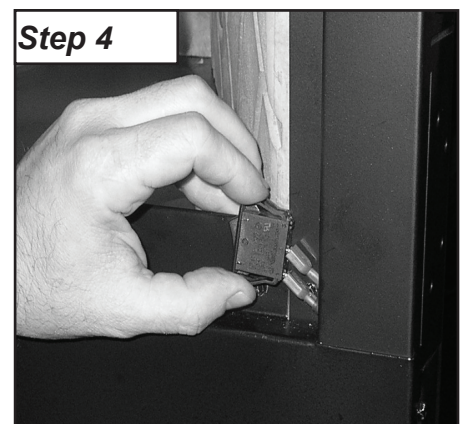
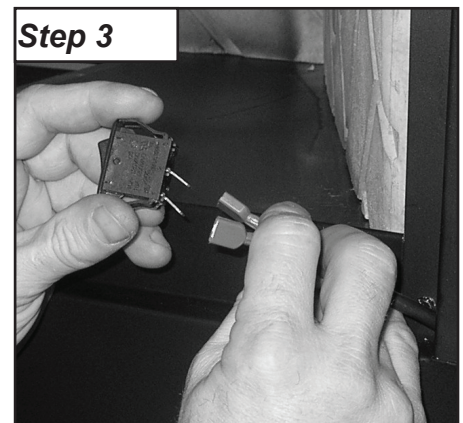
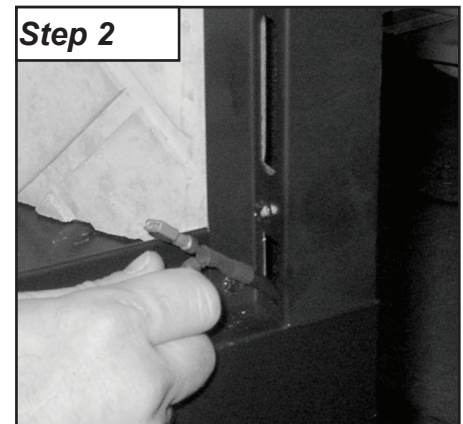
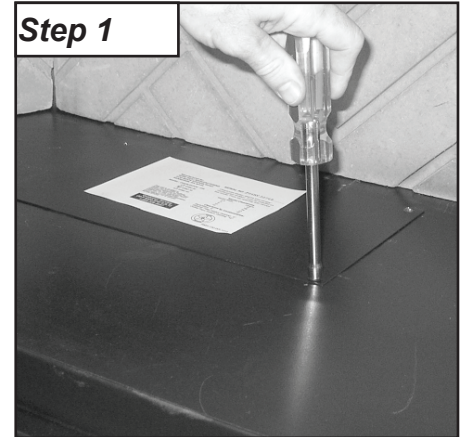
Figure 4

Outlet and J-Box will be positioned horizontally in models VFBC32,A/B VFBC36A/B, and VFBC42A/B

INSTALLATION INSTRUCTIONS

Installing Blower Kit - Model BL101

- Step 1.** Remove Blower Access Panel. Use 1/4" nutdriver to remove four (4) screws. The access panel will be located toward the front in models VFBC32A/B, VFBC36A/B, and VFBC42A/B.
- Step 2.** Place Blower Cable in box. Route switch terminals through firebox side and then up and out through the switch hole on the Front Side panel on VFBC32,36 and 42. The switch will be located in the front right corner of the fireplace floor on VFBC32A VFBC36A, and VFBC42A.
- Step 3.** Slide connectors onto the spades on the back of the switch (wires can be connected to either terminal). Bend tabs slightly downward only on VFBC32,36 and 42 (Non "A/B" models)..
- Step 4.** Slide Switch and wire terminals back into the switch hole. Firmly seat the switch to lock in place.



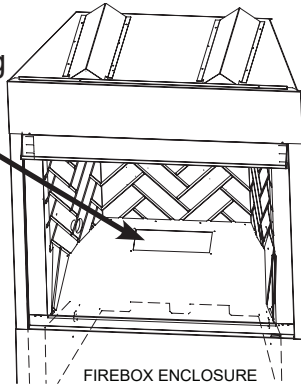
INSTALLATION INSTRUCTIONS

Installing Blower Kit - Model BL101 (cont.)

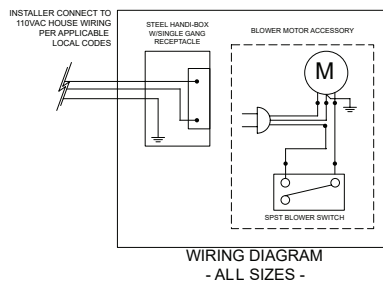
Step 5. a. Attach red and black wire connectors to blower motor terminals.

b. Set blower through opening onto firebox bottom.

c. Attach green ground wire to self-tapping screw to back firebox panel.



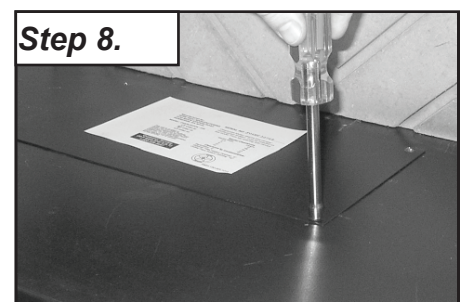
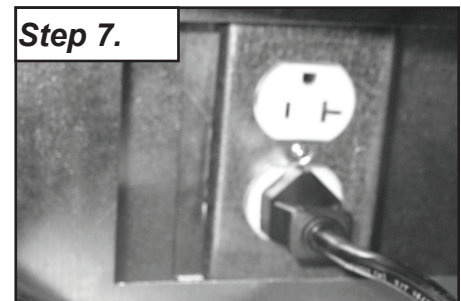
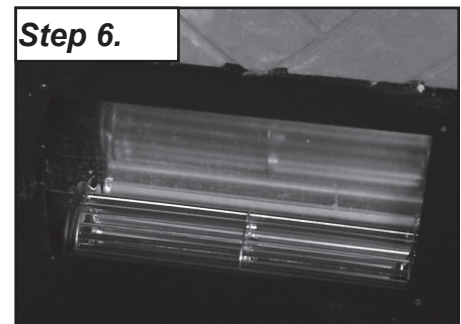
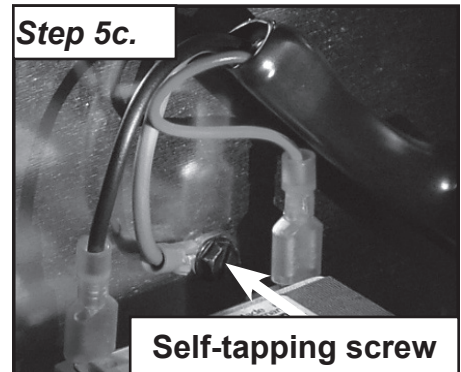
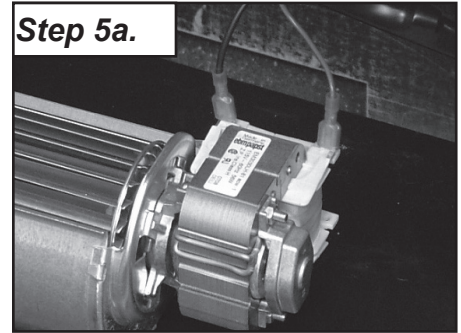
⚠ DANGER:
DO NOT ATTACH RED
OR BLACK WIRE TO
BACK FIREBOX PANEL!



Step 6. Peel off backing of Velcro hold down pads, insert blower into unit, align properly, and firmly press down to attach to Firebox Base. On models VFBC32,36 and 42 the velcro will be facing the fireplace floor with the outlet of the blower pointed rearward. Models VFBC32A/B, VFBC36A/B, and VFBC42A/B: the velcro will be between the blower and fireplace back with outlet of the blower pointing upward.

Step 7. Plug Blower Power Cable into supplied receptacle. Turn power "ON" and test unit.

Step 8. Replace Blower Access Panel.
NOTE: If you are uncertain or unclear with any instructions or parts, **STOP** and immediately contact the seller or manufacturer listed on these instructions for further explanation and/or direction.
Customer Service (800) 221-5647



NOTES:

NOTES:

Limited One Year Warranty

Limited Warranty shall apply to the original purchaser at the original installation point only.

The Blower components are warranted for one year to the original owner, subject of proof of purchase.

General Warranty: This Limited Warranty will be void if the appliance is not installed by a qualified installer in accordance with the installation instructions. The Limited Warranty will also be void if the appliances is not operated and maintained according to the operating instructions supplied with the appliance, and does not extend to 1) blower damage by accident, neglect, misuse, abuse, alteration, negligence of others, including the installation thereof by unqualified installers, 2) the costs of removal, reinstallation or transportation of defective parts on the appliance, or 3) incidental or consequential damage. All service work must be performed by an authorized service representative.

This warranty is expressly in lieu of other warranties, express or implied, including the warranty of the merchantability of fitness for the purpose and of all other obligations or liabilities. Sure Heat Manufacturing does not assume for any other obligations or liabilities in connection with the sale or use of the appliance. In states that do not allow limitation on how long an implied warranty lasts, or do not allow exclusion of indirect damage, those limitations of exclusions may not apply to you. You may also have the additional rights not covered in this Limited Warranty.

Sure Heat Manufacturing reserves the right to investigate any and all claims against the Limited Warranty and decide upon method of settlement.

All costs for removal and reinstallation are the expressed responsibility of the purchaser.

Service: Repair and replacement work should only be done by a qualified service person. Always shut off the gas supply and make sure the appliance is cool before beginning any service operation.

For repair or replacement of a defective part or parts, contact our Customer Service Department at:

1-800-229-5647

You will be asked to provide valid warranty registration, proof of purchase and model number.

Purchased From : _____ Date: _____

Model: BL-101

Name: _____ Date: _____

Address : _____

City : _____ State: _____ Zip: _____

Phone : (____) _____

Contact Sure Heat Manufacturing for questions concerning prices and policies covering replacement parts. Parts may be ordered through your Sure Heat Distributor or Dealer.

You will need the correct name, part number and model number of the appliance when ordering replacement parts.

Should you need additional information beyond what your dealer can furnish, contact:

Sure Heat Manufacturing 3140 Moon Station Road, Kennesaw GA 30144

www.sureheat.com

**RMH-130-00703
09/2013**