

STEEL CORE

AIR NEEDLE SCALER

40806



⚠ WARNING

This product contains or, when used, produces a chemical known to the State of California to cause cancer and birth defects or other reproductive harm.
(California Health & Safety Code § 25249.5, et seq.)

**Actual product may vary slightly*

Please carefully read and save these instructions before attempting to assemble, maintain, install, or operate this product. Observe all safety information to protect yourself and others. Failure to observe the instructions may result in property damage and/or personal injury. Please keep instructions for future reference.

For warranty purchases, please keep your dated proof of purchase. File or attach to the manual for safe keeping.

INSTRUCTIONS PERTAINING TO A RISK OF FIRE, ELECTRIC SHOCK, OR INJURY TO PERSONS

WARNING: When using tools, basic precautions should always be followed, including the following:

GENERAL

To reduce the risks of electric shock, fire, and injury to persons, read all the instructions before using the tool.

WORK AREA

1. **Keep the work area clean and well lighted.** Cluttered benches and dark areas increase the risks of electric shock, fire, and injury to persons.
2. **Do not operate the tool in explosive atmospheres, such as in the presence of flammable liquids, gases, or dust.** The tool is liable to create sparks resulting in the ignition of the dust or fumes.
3. **Keep bystanders, children, and visitors away while operating the tool.** Distractions are liable to result in the loss of control of the tool.

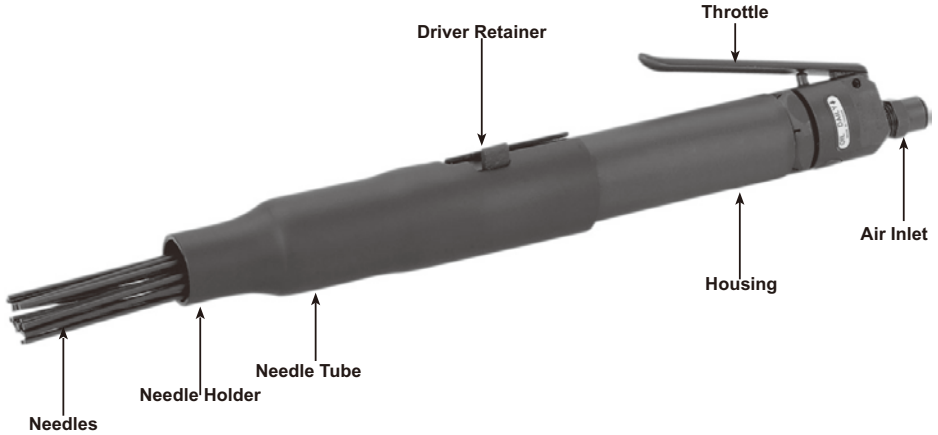
AIR SOURCE



1. **Never connect to an air source that is capable of exceeding 200 psi.** Over pressurizing the tool may cause bursting, abnormal operation, breakage of the tool or serious injury to persons. Use only clean, dry, regulated compressed air at the rated pressure or within the rated pressure range as marked on the tool. Always verify prior to using the tool that the air source has been adjusted to the rated air pressure or within the rated air-pressure range.
2. **Never use oxygen, carbon dioxide, combustible gases or any bottled gas as an air source for the tool.** Such gases are capable of explosion and serious injury to persons.

SPECIFICATIONS

Stroke	1/2"
Blows per minute	4000
Overall Length	18"
Average Air Consumption	10 CFM @ 90 PSI
Air Inlet	1/4" -18 NPT



ASSEMBLY

1. During shipment, some Needles may fall out of the Needle Holder. If so, remove the Needle Holder (26), Needles (25), and Spring (27) from the Needle Tube (28).
2. You should have 19 Needles. If you are missing Needles, call FOT Tools. If any of the Needles are bent, do not use them.
3. Insert the small ends of the Needles (25) into the holes in the Needle Holder (26). The Needles should sit flush with the top of the Needle Holder.
4. Slide the Spring (27) over the Needles (25).
5. Slide the Needle assembly into the Needle Tube (28). **See Air Needle Scaler Components on page 6.**
6. Line up the Driver Retainer with the slit in the Needle Tube (28). Insert the Housing (20) into the Needle Tube (28). **See Figure A.**

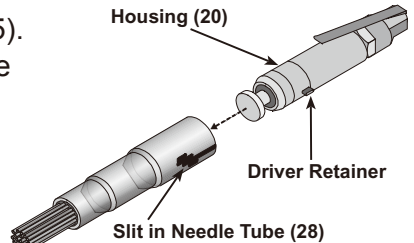


Figure A: Needle Tube Assembly

TOOL SETUP

TO PREVENT SERIOUS INJURY FROM ACCIDENTAL OPERATION:

Turn off the tool, detach the air supply, safely discharge any residual air pressure in the tool, and release the Throttle before performing any inspection, maintenance, or cleaning procedures.

TO PREVENT SERIOUS INJURY:

Do not adjust or tamper with any control or component in a way not specifically explained within this manual. Improper adjustment can result in tool failure or other serious hazards.

1. To set the force of the scaler, push the Housing forward until the Driver Retainer slides into the first notch (lowest setting) in the Needle Tube. **See Figure B.**
2. To make the scaling action stronger, move the Driver Retainer into the second or third notch. Use the second and third notches only when using the first notch delivers unsatisfactory results.

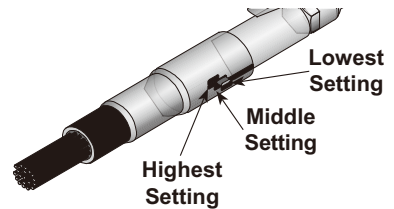


Figure B: Setting the Force of the Scaler

WORKPIECE AND WORK AREA SETUP

1. Designate a work area that is clean and well lit. To prevent distraction and injury, the work area must not allow access by children or pets.
2. Route the air hose along a safe route to reach the work area without creating a tripping hazard or exposing the air hose to possible damage. The air hose must be long enough to reach the work area with enough extra length to allow free movement while working.
3. Secure loose workpieces using a vise or clamps (not included) to prevent movement while working.
4. There must not be hazardous objects (such as utility lines or foreign objects) nearby that will present a hazard while working.

GENERAL OPERATING INSTRUCTIONS

1. If an automatic oiler is not used, add a few drops of Pneumatic Tool Oil to the airline connection before use. Add a few drops more after each hour of continual use.
2. Grip the Air Needle Scaler with both hands. Place one hand on the Needle Tube and the other hand on the Barrel for best control.
3. Press the Throttle to turn on the tool. Make sure the Needles are not touching any surface before you press the Throttle.
4. Place the vibrating Needles on the surface residue to remove. Move the tool around in the residue area.
5. Keep a light pressure on the Air Needle Scaler while in use. Do not apply heavy pressure, as damage to the surface area may result.
6. If the tool requires more force to accomplish the task, verify that the tool receives sufficient, unobstructed airflow (CFM) and increase the pressure (PSI) output of the regulator up to the maximum air pressure rating of this tool.

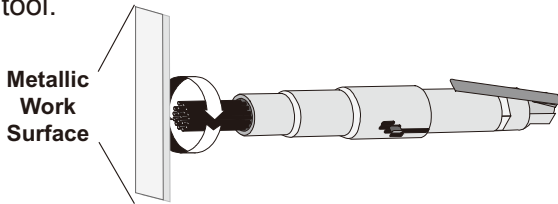


Figure C: Operating the Air Needle Scaler

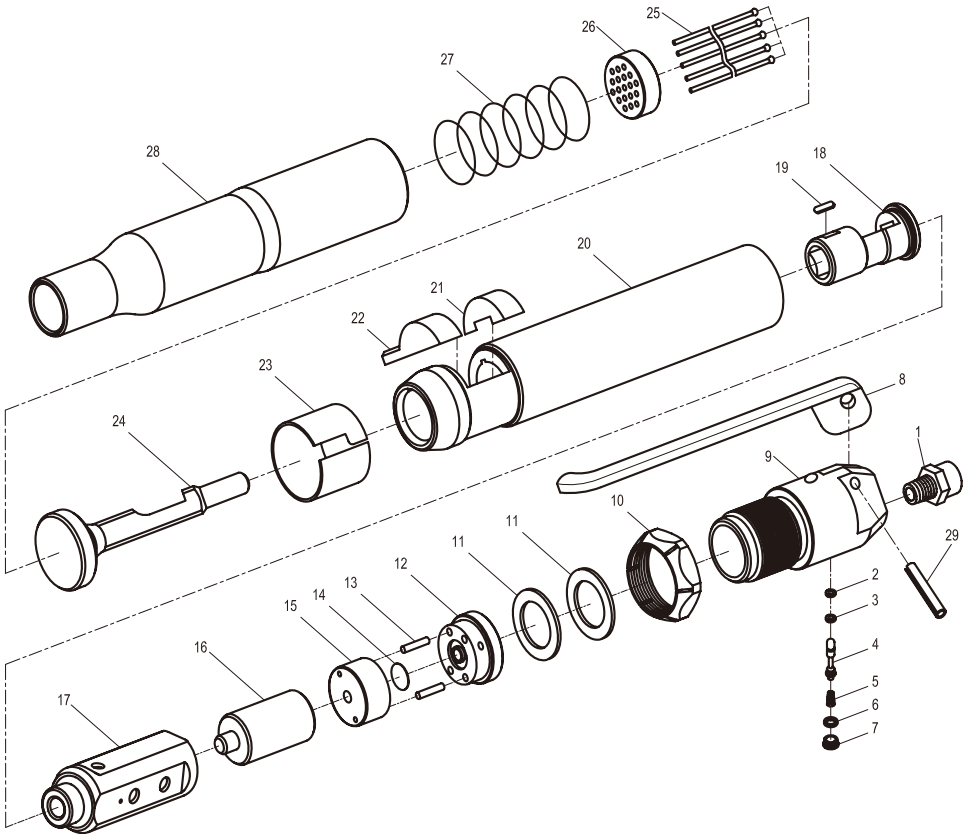
CAUTION! TO PREVENT INJURY FROM TOOL OR ACCESSORY FAILURE: Do not exceed the tool's maximum air pressure rating. If the tool still does not have sufficient force at maximum pressure and sufficient airflow, then a larger tool may be required.

7. If the Air Needle Scaler does not remove the residue even after repeated brief attempts on the highest setting, do not continue attempts to remove the residue. Use another method to remove the residue.
8. To prevent accidents, turn off the tool, detach the air supply, safely discharge any residual air pressure in the tool, and release the throttle and/or turn the switch to its off position after use. Clean external surfaces of the tool with clean, dry cloth, and apply a thin coat of tool oil. Then store the tool indoors out of children's reach.

PARTS LIST

Part	Description	Qty
1	Air Inlet	1
2	O-Ring	1
3	O-Ring	1
4	Valve Stem	1
5	Spring	1
6	O-Ring	1
7	Lock Screw	1
8	Trigger	1
9	Rear Housing	1
10	Clamp Nut	1
11	Washer	2
12	Rear End Plate	1
13	Idler Pin	2
14	Valve Plate	1
15	Front End Plate	1

Part	Description	Qty
16	Piston	1
17	Cylinder	1
18	Clamping Chuck	1
19	Flat Key 3X12	1
20	Housing	1
21	Cushion Pad	1
22	Position Block	1
23	Banding Ring	1
24	Hammer	1
25	Needle	19
26	Needle Holder	1
27	Spring	1
28	Needle Tube	1
29	Spring Pin 5X22	1



Limited Manufacturer Warranty

FOT makes every effort to ensure that this product meets high quality and durability standards. FOT warrants to the original retail consumer a 1-year limited warranty from the date the product was purchased at retail and each product is free from defects in materials. Warranty does not apply to defects due directly or indirectly to misuse, abuse, negligence or accidents, repairs or alterations, or a lack of maintenance. FOT shall in no event be liable for death, injuries to persons or property, or for incidental, special or consequential damages arising from the use of our products. To receive service under warranty, the original manufacturer part must be returned for examination by an authorized service center. Shipping and handling charges may apply. If a defect is found, FOT will either repair or replace the product at its discretion.

DO NOT RETURN TO STORE

For Customer Service:

Email: customerservice@focus-ontools.com or Call 1-800-348-5004