

# INSTALLATION



**Caution:** All installation types need to allow room for faucet installation. Ensure adequate clearance behind the basin for your faucet and backsplash, as well as the full range of motion for faucet handles and spouts. All basins, especially under mount and apron front installations, should be installed by professional installers.

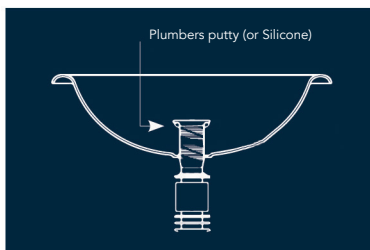


The Sinkology **Dual-Flex rim** is designed with a Flat Standard under-mount rim, also has a slight curve at the end to allow for decorative and flexible drop-in installation.

# BATH - DROP-IN INSTALLATION

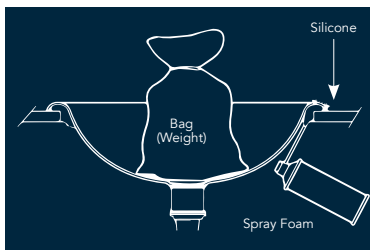
- Step 1.** Flip sink upside down and trace outside edge onto craft paper or cardboard. Add second line that is 1/2" inside that line. Cut out the center of the traced template using the second line.
- Step 2.** Position the template flat on the countertop to align with cabinet and plumbing connections. Mark opening on countertop. Drill a 1/2" hole on the inside of the scribed line to start cutout, then use a jigsaw to cut the countertop.
- Step 3.** Position the sink in the hole and check for gaps around the rim. Eliminate gaps by gently tapping the rim with a rubber mallet.

- Step 4.** Attach drain assembly to sink.



- Step 5.** Apply silicone to the bottom rim of the sink. Position the sink in the cutout, and use weight in the basin to hold the sink in place.

- Step 6.** Clean excess silicone. Apply polyurethane to seal the gap between the sink and countertop. Mount faucet.



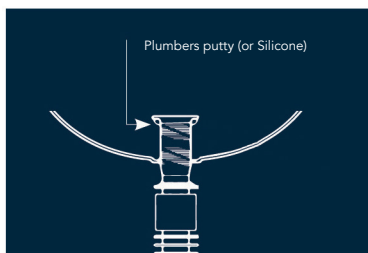
- Step 7.** Treat copper sinks with Sinkology Copper Armor for maximum protection (apply based on directions on bottle).

# BATH - UNDER-MOUNT INSTALLATION

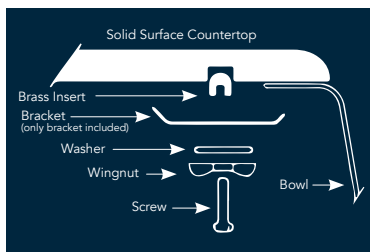
**Step 1.** Flip sink upside down and trace outside edge, noting where the rim is located, on craft paper or cardboard. Add second line that is inside that line at the desired offset. Cut out the center of the traced template using the second line.

**Step 2.** Place the template on to the countertop, trace the edge with a pencil, and cut the hole into the countertop.

**Step 3.** Assemble waste fitting to basin, and use silicone to seal between waste fitting and the inside of the basin.



**Step 4.** Mount sink to countertop.



**Step 5.** Clean excess silicone and mount faucet.

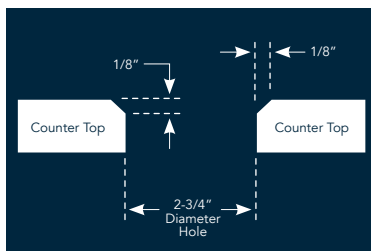
**Step 6.** Treat copper sinks with Sinkology Copper Armor for maximum protection (apply based on directions on bottle).



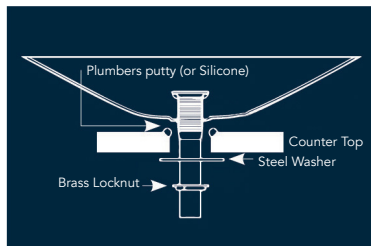
## BATH - VESSEL INSTALLATION

**Step 1.** Flip sink upside down and trace outside edge onto craft paper or cardboard. Outline faucet to ensure necessary clearance. Cut out template and place on the countertop.

**Step 2.** Find and mark the center of the sink based on the template. Remove template from countertop. Drill a 2 3/4" diameter hole in the center of your countertop. 1/8" chamfered edge is recommended, but not necessary.



**Step 3.** Apply silicone to chamfer and mount sink to countertop using waste fitting and supplied Washer.



**Step 4.** Clean excess silicone and mount faucet.

**Step 5.** Treat copper sinks with Sinkology Copper Armor for maximum protection (apply based on directions on bottle).



# BATHTUB - FREESTANDING INSTALLATION

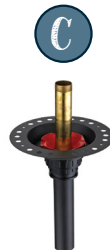
Before you begin, please read and follow installation and care instructions. Observe local plumbing, building, and electrical codes. Ensure adequate and level support floor.

If you are unfamiliar with installing bathroom fixtures and plumbing, we recommend consulting a professional. Keep plumbing connections around the tub easily accessible for future maintenance that may be necessary. Sinkology does not accept liability for any damage to the floor, walls, plumbing, or for personal injury during installation.

## Preparation:

1. Unpack and inspect copper tub for damages. If damages are found, contact supplier to discuss replacement.
2. Acquire tools and accessories needed for installation. For Sinkology copper bathtubs, we recommend the following accessories available at Sinkology.com retail partners.

- A. Sinkology Drain & Overflow Kit – Model # SDT101-AC
- B. Sinkology Copper Armor Kit – Model # SARMOR-101
- C. OS&B Bathtub Rough-In Kit – Model # ITD35



# BATHTUB - FREESTANDING INSTALLATION (CONT.)

## Rough-In Waste Drain and Waterlines:

Note: Sinkology copper bathtubs are handmade so variations in dimensions can occur. We recommend performing Rough-In procedures with the bathtub on site to ensure the correct installation.

1. Loosely assemble selected freestanding bathtub waste drain or overflow kit onto bathtub (leaving off the tailpipes at this time).
2. Determine water line locations for selected bathtub filler. Tub faucet may need to be assembled prior to tub installation.
3. Place bathtub in final location and mark exact location on the floor.
4. Rough-In final plumbing waste drain and water lines into proper locations.
  - a. We recommend using OS&B Model # ITD35 rough-in kit. This kit is designed to work with Sinkology copper bath tubs and makes plumbing rough-in fast and easy, and ensures a water tight connection.

## Installation

- Step 1.** Final waste drain and waterline Rough-In's should be completed and flooring should be finished. Ensure bathtub is properly supported and level.
- Step 2.** Double check bathtub faucet installation requirements before final bathtub installation.
- Step 3.** Apply thread sealant or plumbers tape to any threaded connections that do not have rubber gaskets.
- Step 4.** Apply plumbers putty to underside of drain flange and thread through the bathtub and into drain pipe.
- Step 5.** Ensure waste drain and overflow is securely connected to bathtub.
- Step 6.** Place tub back into desired location and verify that bathtub is level.
  - a. If using recommended rough-in kit (model # ITD35), the tub will need to be raised approx. 8" before lowering into final position.
- Step 7.** Finish installation by running a bead of silicone adhesive around the base of copper freestanding bathtub where applicable.
- Step 8.** Allow sealants and adhesive to thoroughly dry before filling bathtub with water. Consult sealant and adhesive manufacturers for dry times, as they may vary.



## KITCHEN - DROP-IN INSTALLATION

- Step 1.** Flip sink upside down and trace the inside edge onto craft paper or cardboard by placing arm through the drain hole. Add second line that is 3/8" outside that line. Cut out the center of the traced template using the second line.
- Step 2.** Position the template flat on the countertop to align with cabinet and plumbing connections. Mark opening on countertop. Drill a 1/2" hole on the inside of the scribed line to start cutout, then use a jigsaw to cut the countertop.
- Step 3.** Use the sink as a template for the faucet holes. Center the sink in the cutout. Use a pencil to mark the faucet holes. Remove the sink and use a 1 1/2" hole saw to cut out the necessary faucet holes.
- Step 4.** Install clamps. Place notched end of bolt into the keyhole slot. Lower the sink carefully into the countertop so the bolts enter without interference. (Illustration 4A) Turn the claws out 90° so they grasp the underside of the countertop. (Illustration 5A). Tighten the clamps gradually (Illustration 5B), in a sequence similar to that shown. (Illustration 5C). Please note that some kitchen sinks are designed to mount either as an undermount or drop-in. These sinks will not have install clamps and need to be installed using 100% silicone.

Illustration 4A

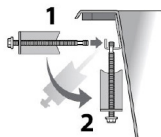


Illustration 5A

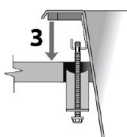


Illustration 5B

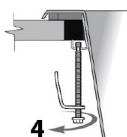
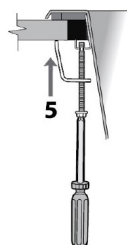


Illustration 5C



- Step 5.** Treat copper sinks with Sinkology Copper Armor for maximum protection (apply based on directions on bottle).



## KITCHEN - UNDER-MOUNT INSTALLATION

- Step 1.** Flip sink basin upside down on countertop and mark countertop by tracing the edge of the basin. Measure the distance between the edge of the basin and the inside edge of the lip. Add a second line inside the first according to this measurement.
- Step 2.** Cut countertop based on the inside, second line.
- Step 3.** Apply silicone around hole in the underside of the countertop and position the basin.
- Step 4.** Use a level to make sure that the basin is sitting flush in all directions, while pressing down to seal.
- Step 5.** Clean excess silicone and mount faucet.
- Step 6.** Treat copper sinks with Sinkology Copper Armor for maximum protection (apply based on directions on bottle).





## KITCHEN - APRON FRONT INSTALLATION

**Step 1.** Flip sink upside down and mark the countertop by tracing the inside edge of the basin by placing your arm through the drain hole.

Note: We recommend a ¼" reveal on 3 sides when using the under-mount style. For flush or built-up mount, cut countertop along the outside line of basin profile. Apron fronts are designed to be installed ¾" extended out beyond the front of the countertop.

**Step 2.** Cut the countertop based on the installation type.

**Step 3.** Place the basin and apply silicone as a gasket between the sink and the cabinet.

**Step 4.** Install countertop.

**Step 5.** Apply silicone around the top edge of the basin. Place the countertop around the basin. Ensure it is centered and remove any excess silicone.

**Step 6.** Install the drain mount.

**Step 7.** Treat copper sinks with Sinkology Copper Armor for maximum protection (apply based on directions on bottle).