

Reassembly

To Reassemble:

1. Install the nozzle seal* (1) with the groove (a) (slot) facing toward the nozzle (away from the front end assembly).
2. Insert the nozzle (2). Make sure to align the groove (b) and notch (c) and align the nozzle opening with the needle.
3. Put the air screen (d) in the air cap (e). Put both (3) on the nozzle (2) and secure with the connecting nut (4). Make sure the short tab on the nozzle (f) is lined up with the short slot (g) on the air cap.

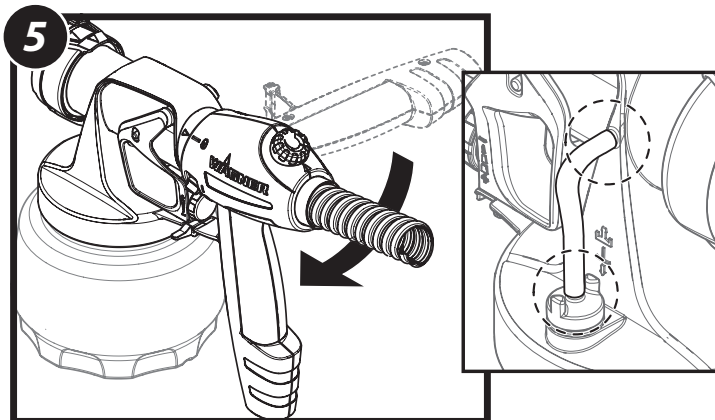
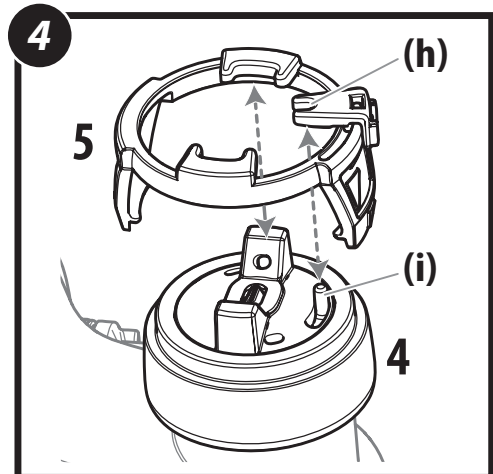
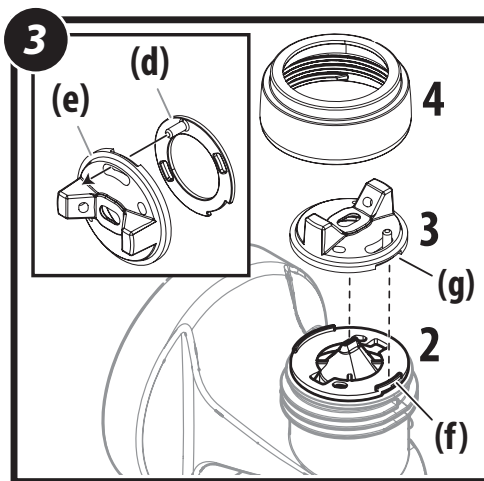
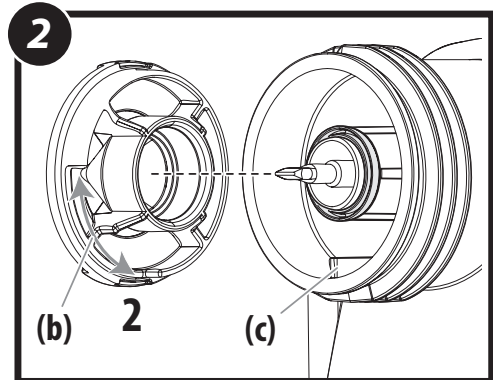
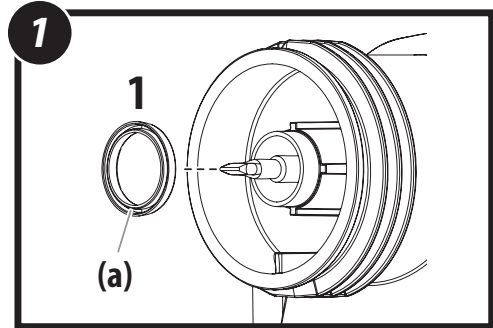
Note: This step is easier if the nozzle is facing up.

4. Snap the adjustment ring (5) into the connecting nut (4), enabling the adjustment lever (h) on the peg (i) to be positioned in the air cap.

Note: Make sure that the two recesses on the adjustment ring are engaged in the air cap tabs.

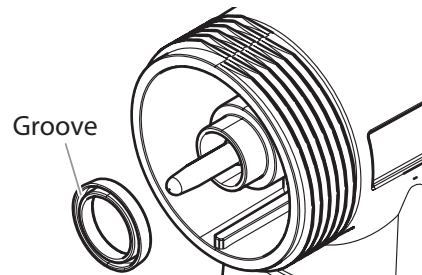
5. Reassemble the spray gun.

Note: Make sure the air valve tube is free of paint. If not, clean the air valve tube by following the instructions on the next page. If clean, make sure it is attached securely at both ends (see inset).



* Nozzle seal - DO NOT LOSE

It is important that the nozzle seal inside the nozzle be re-installed properly. Make sure the cup side of the seal (the side with the groove) is facing out towards the front of the nozzle. Improper installation will cause leakage.



Maintenance

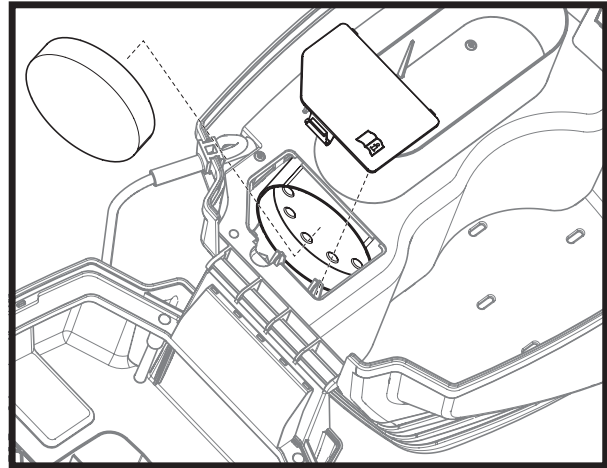
Replacing the Filter:

IMPORTANT: Before every use, you should inspect the air filter in the turbine to see if it is excessively dirty. If it is dirty, follow these steps to replace it.

IMPORTANT: Never operate your unit without the air filter. Dirt could be sucked in and interfere with the function of the unit.

1. Open up the Power Box cover. Press the tab and remove the filter cover.
2. Remove the dirty filter from the turbine and replace. The smooth side of the air filter must be placed toward the turbine.

Secure the cover back onto the turbine.



Cleaning the Air Valve Tube:

Note: If paint has entered the air tube, proceed as follows.

1. Pull the air tube (a) at the top from the nozzle. Screw off the valve cover (b). Remove the valve seal (c). Clean all the parts carefully. Make sure to remove any material from valve seal housing area (d).

IMPORTANT: The air tube and valve seal (c) are only solvent-resistant to a limited extent. Do not immerse in solvent, only wipe.

2. Place the valve seal (c) in the valve cover (b) with the pin facing into the tube.

Note: Installing the valve seal into the valve cover will be much easier if the valve cover is inverted.

3. Turn the nozzle upside down and screw on the valve cover (with valve seal inside) from underneath.

Note: Turning the nozzle upside down will prevent the valve seal from falling out of the valve cover during reinstallation.

4. Place the air tube on the valve cover and on the nipple at the nozzle.

