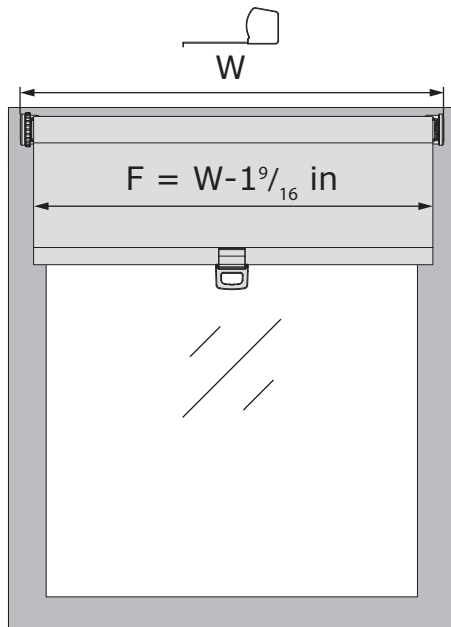
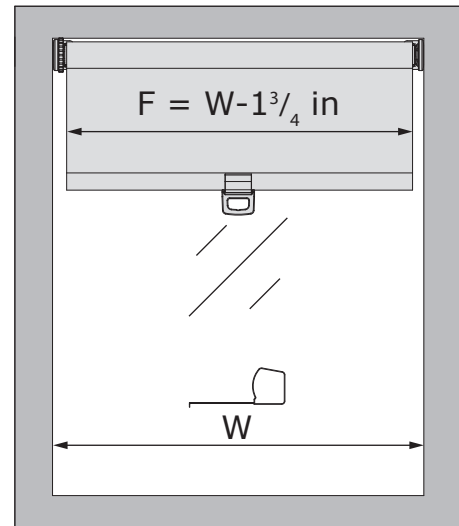


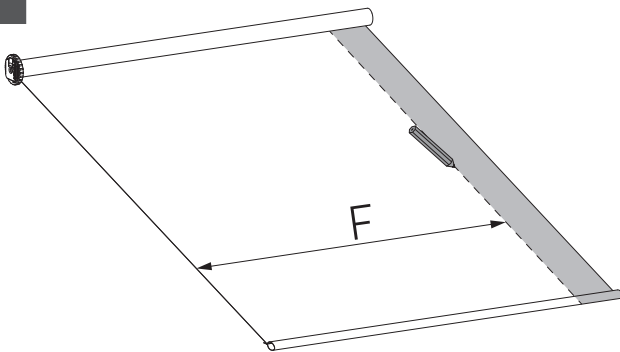
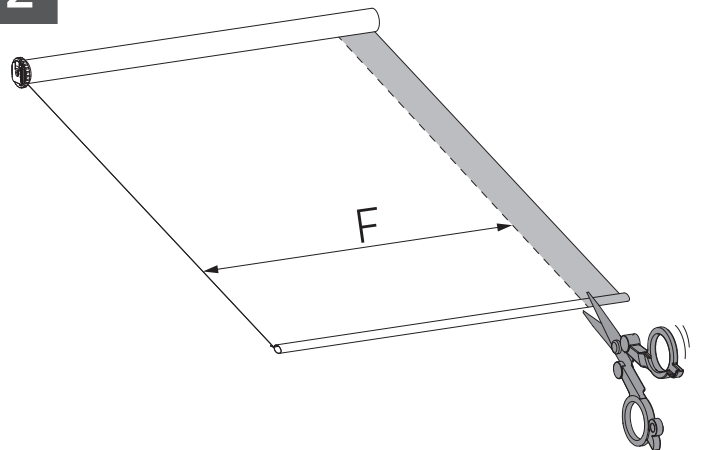
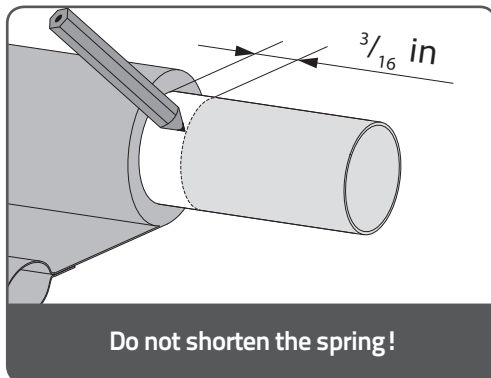
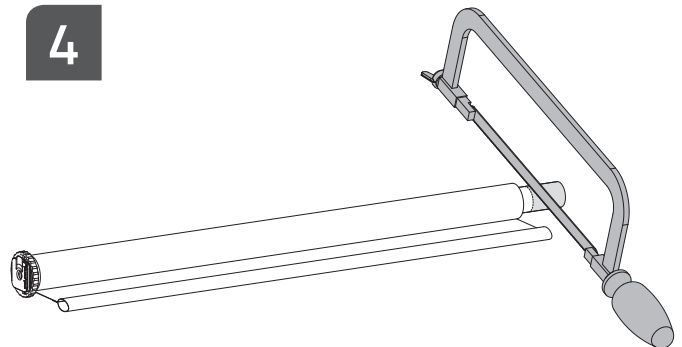
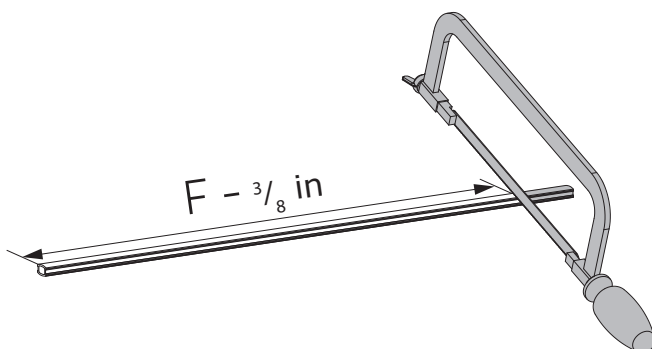
MN180026_20180620

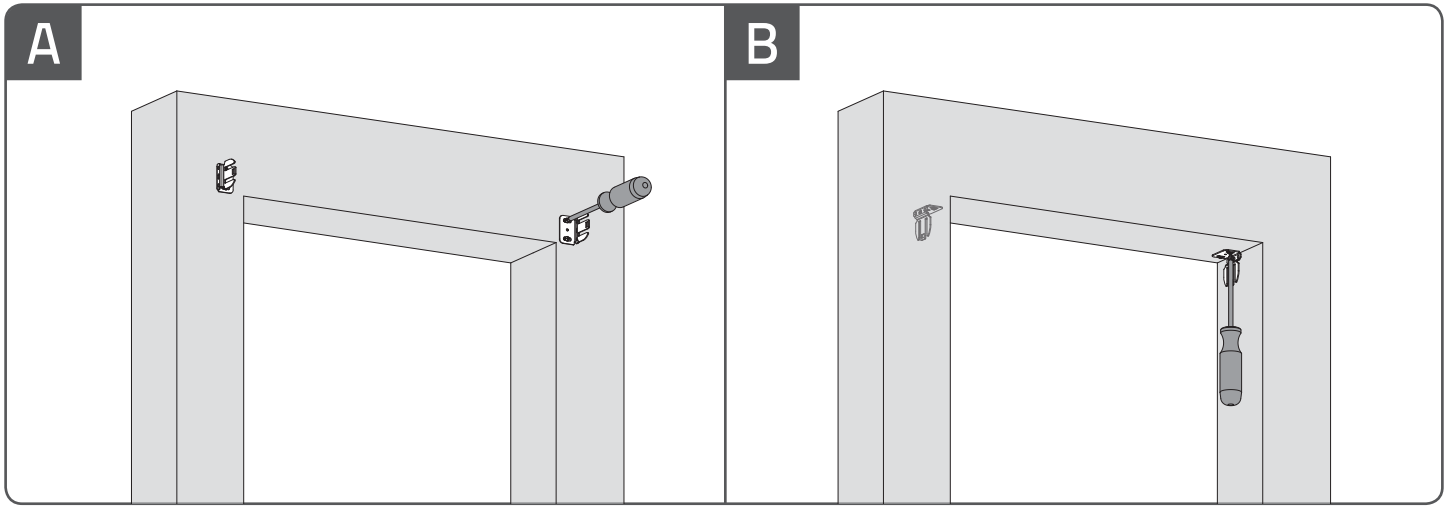
A

Min. $W = 23''$
 (Size 23" & 27" can not be shortened)

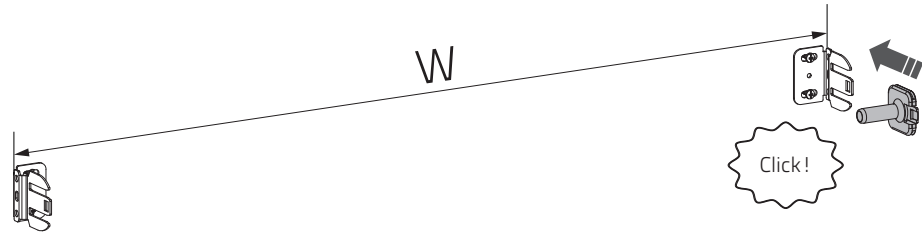
B

Min. $W = 23''$
 (Size 23" & 27" can not be shortened)

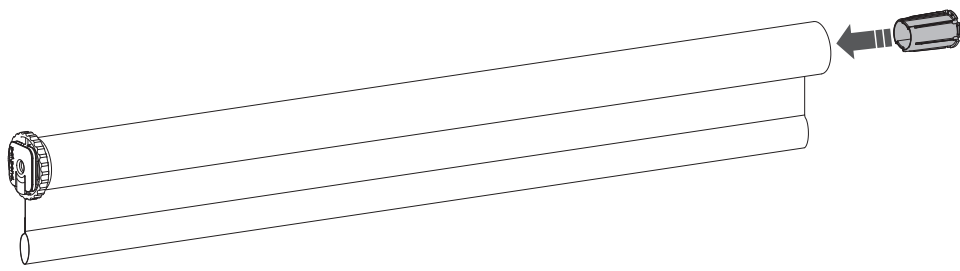
1**2****3****4****5**



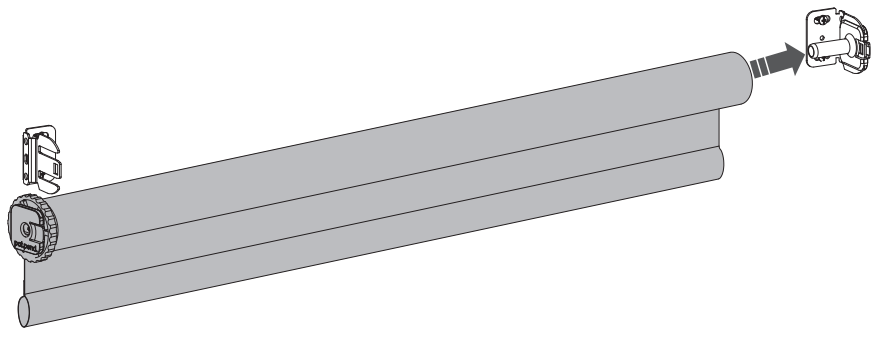
1



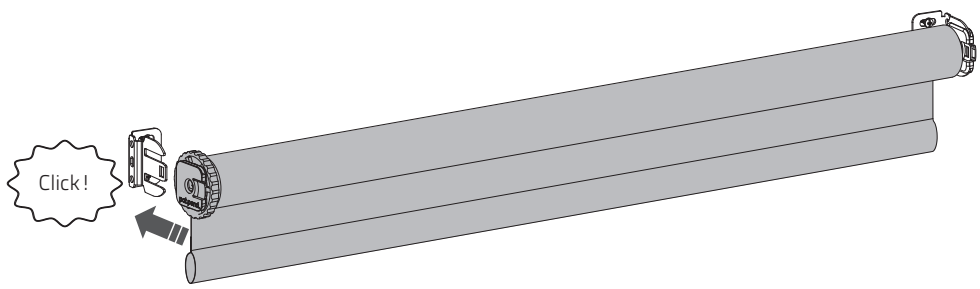
2



3

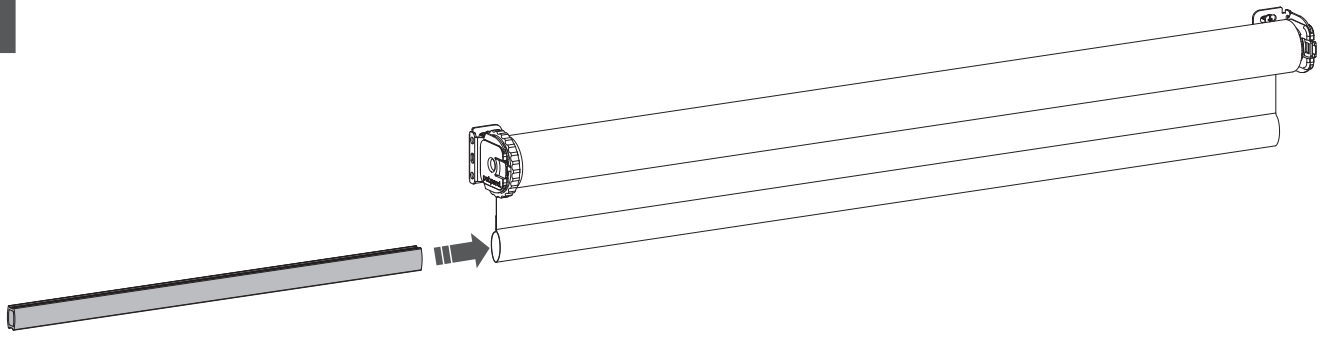


4

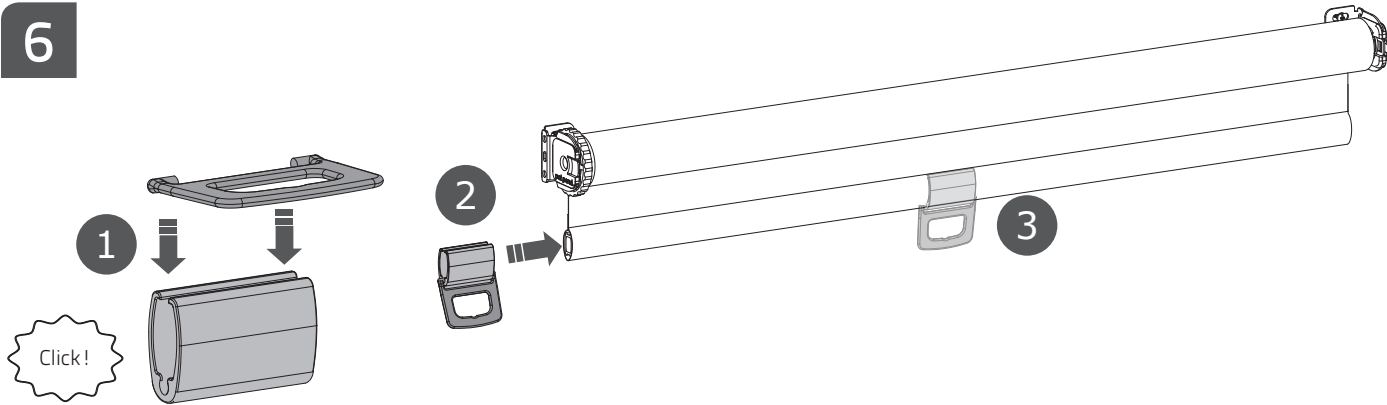


MN180026_20180620

5

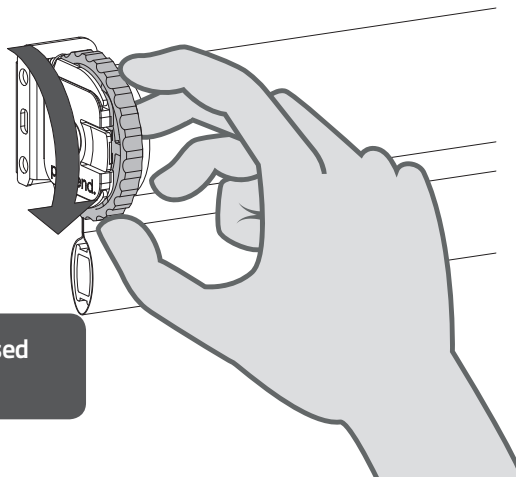


6



7 Add lifting force

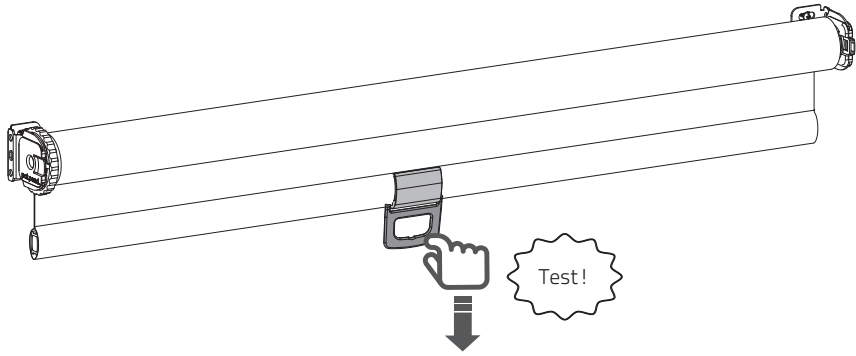
Width (.in)	Fabric type		
	Transparent	Black-out	Screen
0-23"	3-7	11-15	6-9
23-31"	4-9	7-15	9-13
31-39"	6-14	7-11	12-16
39-47"	5-9	11-14	6-8
47-55"	9-12	14-16	8-9
55-63"	9-13	11-16	9-13
63-70"	11-14	13-16	12-14
>70"	11-14	6-13	14-16



Add the amount of rotations based on your blind.

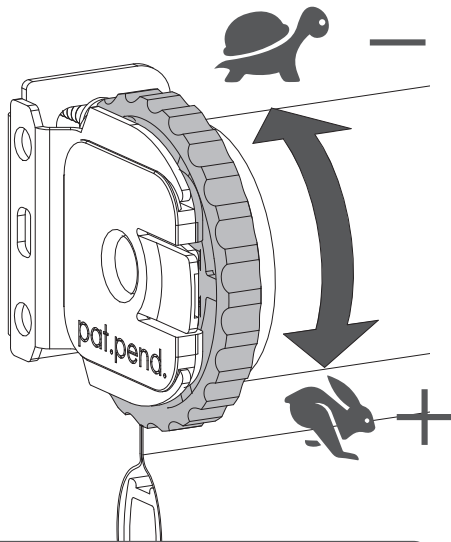
MN180026_20180620

8



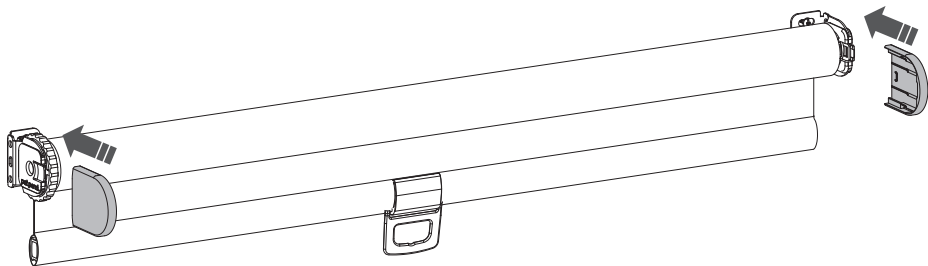
Pull and release the blind to determine the speed of the blind.

9



Adjust the tension to your desired speed.

10



MN180026_20180620