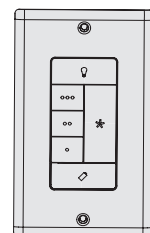


Item #000-000
Model #99111

USE AND CARE GUIDE

UNIVERSAL CEILING FAN WALL CONTROL



Warranty

1-YEAR LIMITED WARRANTY

WHAT IS COVERED

The manufacturer makes the following limited warranty to the original purchaser of the wall control: Your wall control is warranted to be free from defects in material and workmanship for a period of one year from the date of sale. If the wall control malfunctions or fails within the warranty period due to a defect in material or workmanship we will replace it free of charge. If the original purchaser ceases to own the wall control, this warranty and any implied warranty, including but not limited to any implied warranty of merchantability or fitness for a particular purpose, are voided. This warranty is in lieu of all other express warranties. The duration of any implied warranty, including, but not limited to, any implied warranty of merchantability or fitness for a particular purpose, in respect to any control, is expressly limited to the period of the express warranty set forth above for such control.

WHAT IS NOT COVERED

This warranty excludes malfunctions or failures which were caused by repairs by persons not authorized by us, mishandling, improper installation, modifications, or damage to the wall control while in your possession, or unreasonable use. This warranty does not apply to batteries or to deterioration or damage to the product caused by the use of faulty batteries. In no event shall the manufacturer be liable for consequential or incidental damages. Some states do not allow limitations on how long an implied warranty lasts or the exclusion or limitations of incidental or consequential damages, so the above limitations or exclusions may not apply to you. This warranty gives you specific legal rights and you may also have other rights which vary from state to state.

Questions, problems, missing parts? Before returning to the store, call Customer Service 9 a.m.-5:30 p.m., EST, Monday-Friday

1-888-830-1326

WWW.HOMEDEPOT.COM

Care and Cleaning

To clean, use soft brushes or cloths to prevent scratching. Cleaning products may damage finishes.

Pre-Installation

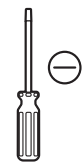
TOOLS REQUIRED



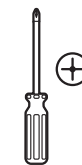
Ladder



Pliers



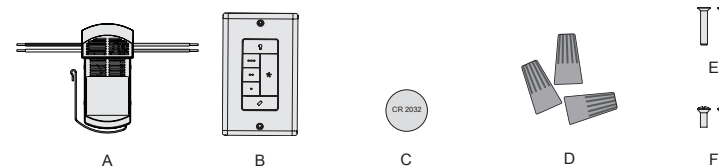
Flat Blade Screwdriver



Phillips Screwdriver

PACKAGE CONTENTS

NOTE: Parts not shown to actual size.



Part	Description	Quantity
A	Receiver	1
B	Wall Control	1
C	Battery	1
D	Wire Connectors	7
E	Long Fasteners	2
F	Short Fasteners	2

Safety Information

CAUTION: To avoid possible electrical shock, before installing or servicing your fan, disconnect the power by turning off the circuit breakers to the outlet box and associated wall switch location. If you cannot lock the circuit breakers in the off position, securely fasten a prominent warning device, such as a tag, to the service panel.

CAUTION: All wiring must be in accordance with national and local electrical codes. ANSI/NFPA 70. If you are unfamiliar with wiring, use a qualified electrician.

NOTE: This product conforms to UL Standard 507.

NOTE: This device complies with part 15 of the FCC Rules. Operation is subject to the following two conditions: (1) this device may not cause harmful interference, and (2) this device must accept any interference received, including interference that may cause undesired operation.

NOTE: This equipment has been tested and found to comply with the limits for a Class B digital device, pursuant to Part 15 of the FCC Rules. These limits are designed to provide reasonable protection against harmful interference in a residential installation. This equipment generates, uses and can radiate radio frequency energy and, if not installed and used in accordance with the instructions, may cause harmful interference to radio communications. However there is no guarantee that interference will not occur in a particular installation. If this equipment does cause harmful interference to radio or television reception, which can be determined by turning the equipment off and on, the user is encouraged to try to correct the interference by one or more of the following measures: Reorient or relocate the receiving antenna, increase the separation between the equipment and receiver, connect the equipment into an outlet on a circuit different from that to which the receiver is connected. Consult the dealer or an experienced radio/TV technician for help. Any changes or modifications to the remote control or receiver not expressly approved by the manufacturer may void one's authority to operate this remote control.

Troubleshooting

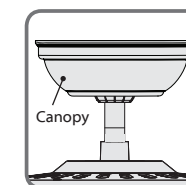
Problem	Solution
The fan remote control is operating inconsistently.	Install a fresh battery. Make sure the battery is installed correctly.
The CFL bulbs flicker.	Turn the light switch off and back on. Within three minutes, hold down the Fan Off button while pressing the Light button twice. If the problem is not corrected, repeat the process up to three times.

Installation

1 Removing the canopy

NOTE: If you are uncertain about wire colors or connections, please contact a qualified electrician.

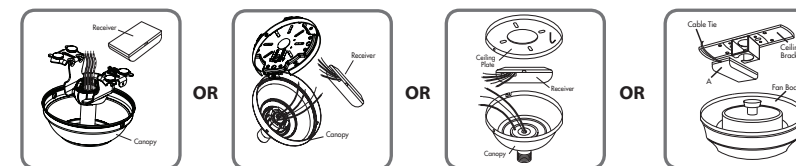
- Before installation, use the pull chains to set the fan speed to HIGH and the light to ON. Ensure the power is off before proceeding.
- Remove the canopy by following the instructions supplied by the fan manufacturer.
- Remove the wire connectors that connect the wires from the outlet box to the fan, leaving the grounding wires connected.



2 Installing the receiver

- Choose the hanging system that most closely resembles the one used by your fan and install the receiver (A) and wire as directed.
- You may have installation issues if the fan is installed on an angled ceiling.

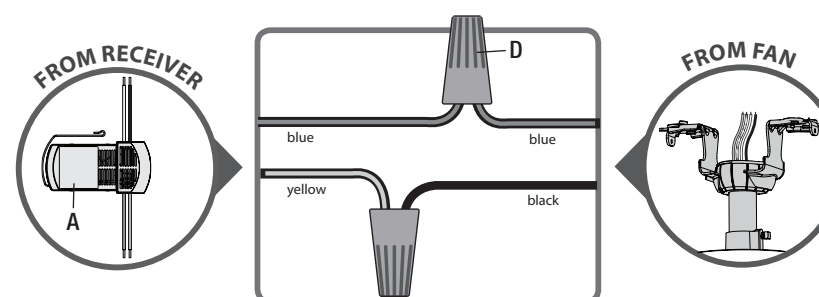
NOTE: Some fans may have considerable excess lead wire. For easier receiver (A) installation, cut the excess wire, leaving a minimum of 8 in. remaining. Re-strip the fan lead wires 1/2 in., and place the remaining excess wire into the ceiling electrical box. The bracket and fan must remain properly grounded.



3 Wiring the receiver to the fan

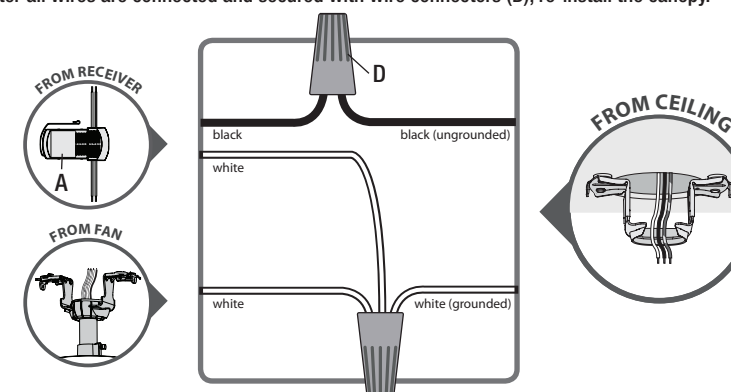
- Using the orange wire connectors (D), connect the yellow wire from the receiver (A) to the black wire from the fan. Connect the blue wire from the receiver (A) to the blue wire (or possibly black with white stripe wire) from the fan.

NOTE: If you are uncertain about wire colors or connections, please contact a qualified electrician.



4 Wiring the receiver and fan to the ceiling

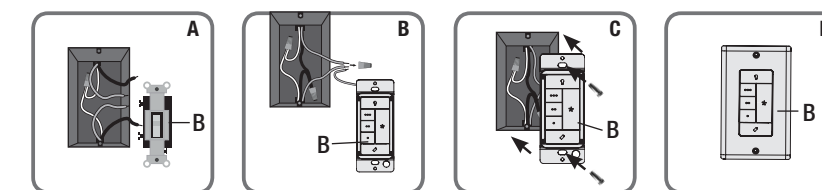
- Using the orange wire connectors (D), connect the black wire (ungrounded) from the ceiling to the black wire from the receiver (A). Connect the white wire (grounded) from the ceiling to both the white wire from the receiver (A) and the white wire from the fan.
- After all wires are connected and secured with wire connectors (D), re-install the canopy.



Installation

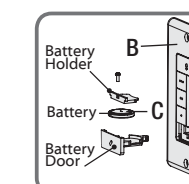
5 Installing the wall control

- Remove the switch plate cover and all wiring from the switch. Figure A.
- Using the orange wire connectors (D), connect the two black wires (ungrounded) from the outlet box. Connect the two green or bare wires (grounding) from the outlet box with the grounding wire from the wall control (B). Figure B.
- Insert the wall control (B) into the outlet box, and secure the two screws using a Phillips head screwdriver. Figure C.
- Install the cover plate using a Phillips Head screwdriver to secure the two cover plate screws. Figure D.



6 Installing the battery

- Before operating the wall control (B), press the battery door to eject it. Using a Phillips head screwdriver, remove the battery holder. Install the battery (C) with the positive (+) side facing downward.
- Secure the battery (C) by reinstalling the battery holder. Finally, reinstall the battery door into the wall control (B). When necessary, replace the used battery (C) with a CR2032 battery.

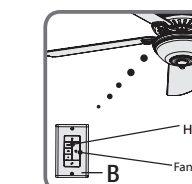


7 Pairing the wall control and receiver

NOTE: The wall control (B) must be paired before the fan will operate.

- Turn on the power.
- Within three minutes of restoring power to the fan, press both the Fan Off button and the High button for at least four seconds. The wall control (B) is now paired to the fan's receiver (A).

NOTE: If using the wall control with multiple fans, repeat this process for each fan.

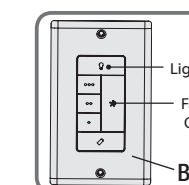


Operation

1 Using the wall control

- To turn the fan on, press one of the fan speed buttons. They are located next to the Fan Off button.

- High
- Medium
- Low



2 Using the Safe Exit program

NOTE: The Safe Exit program gives you about thirty seconds of light, when you turn the lights off, to exit the room before the lights go out.

- Hold the Fan Off button for at least three seconds to initiate the Safe Exit program. The lights will stay on 50% brightness for 15 seconds and then begin to dim. After a total of 30 seconds, the lights will be completely off.

NOTE: For CFL lighting, the lights will stay on 100% brightness for 30 seconds. After a total of 30 seconds, the lights will be completely off.