



SCAN QR CODE TO VIEW OUR SETUP VIDEO



WY28S/32S WALK-BEHIND
BEGINNER MOWER ASSEMBLY/OPERATOR MANUAL



1. Tools to be used are shown above.

- Utility Knife (Not Shown)
- Wire cutters (Side Cutters)
- Phillips or Flat head Screw Driver
- 3/8" Drive Ratchet
- 10mm Socket (3/8" Drive)
- 13mm Socket (3/8" Drive)
- 16mm Socket (3/8" Drive)
- 10mm Wrench
- 13mm Wrench
- 16mm Wrench (Not Shown)
- Rubber Mallet

2. Place crate in open area for disassembly. If available use a rubber mallet to help remove the top and side poles of crate as shown below, right.



3. Using a Utility Knife carefully remove the plastic covering and a tie down straps as shown below.





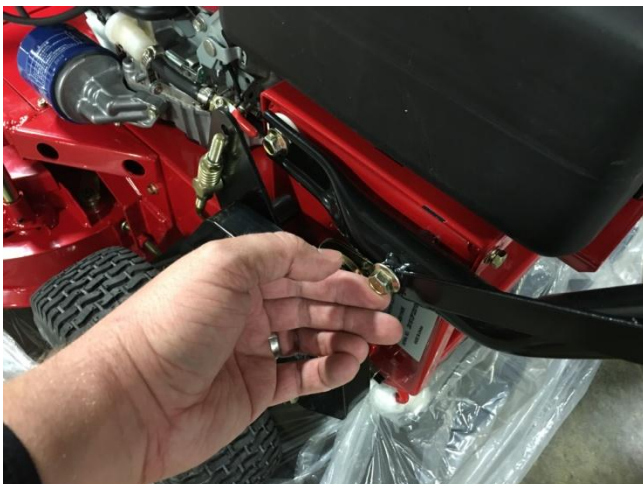
4. After plastic is removed locate Owner's Manual that can be used for any information you may need.
5. Remove rear bolt from frame as shown below.





6. Rotate handle into final position as shown above.

7. Install rear handle screws and nuts as shown, bottom left. Tighten the 16mm nut & 13mm bolt as shown, bottom right.





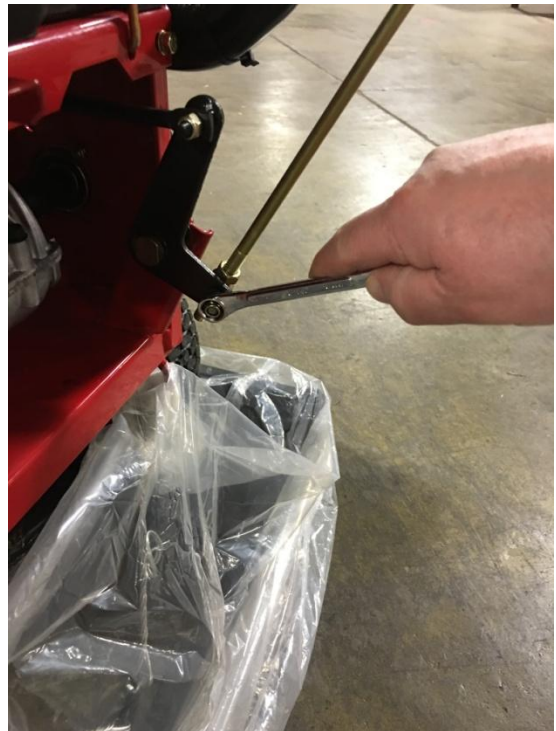
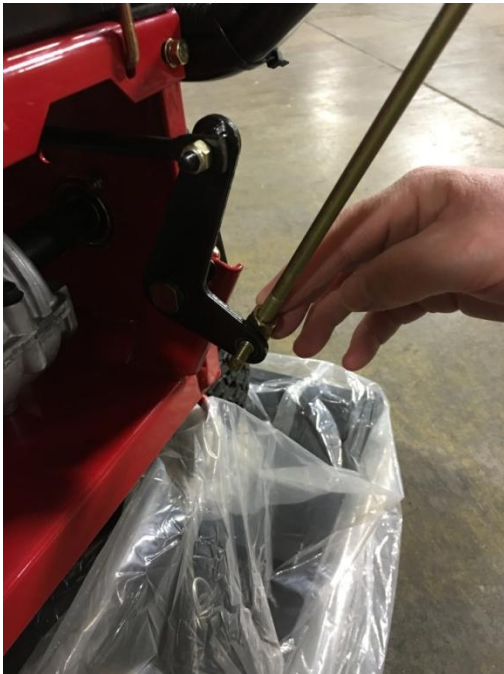
8. Remove discharge chute and cardboard shown above.

9. Remove handle support bracket from front deck lift pins as shown below. This can be discarded.





10. Locate drive lever rods and attach to left and right drive plates as shown above.
11. Attach transmission rod and tighten nut with 10mm wrench as shown below.





12. Attach blade engagement rod and tighten nut using 10mm wrench as shown above.

13. Remove discharge chute fasteners from deck. Attach discharge chute spring as shown below.





14. Install chute and spring and fasteners as shown above.

15. Using 16mm wrench and 16mm socket tighten fasteners as shown below. The bolts should be snug, but loose enough to allow chute to move.





16. On a level surface add SAE 30 oil to engine as shown above. Fill to proper amount shown on dipstick. (Use engine oil specified in Owner's Manual.)
17. Add E10 or less Unleaded Gas to fuel tank as shown below. (Use fuel specified in engine manual.) Make sure fuel valve is in ON position when ready to start engine.





18. Before starting mower you will want to set the mower deck to the desired height.
19. Lift deck and lock hook onto deck pin on both sides of deck as shown above, top left.
20. Referring to the deck height decal, shown top left, move deck height pin to desired height shown above, top right.
21. Lift deck and hook will disconnect from deck pin as shown below.





22. If electric start, attach negative battery cable to negative battery post as shown above. Using 10mm wrench tighten fasteners. You may have to pry nut up for bolt threads to start into nut.

23. Install battery boot as shown below.





24. Prepare to start mower by making sure the Blade Engagement lever is in the STOP position shown above, top right.
25. Then move gear selector to the Neutral position shown above, top right.
26. Lock drive levers into Neutral position using the thumb locks as shown below.





27. Starting engine.

- If pull start with no key, pull starting rope. Place throttle in choke position if needed. (Shown top left)
- If pull start with key, turn key to ON/START position and pull rope. Place throttle in choke position if needed.
- If key start, turn key to ON position until engine starts. Place throttle in choke position if needed.