

CERAMIC

KITCHEN

Features:

- Ceramic Cartridge
- Loop Handle
- Max Flow Rate 1.8GPM(7.56LPM) at 60PSI (ASME.A112.18.1M)



10077LF

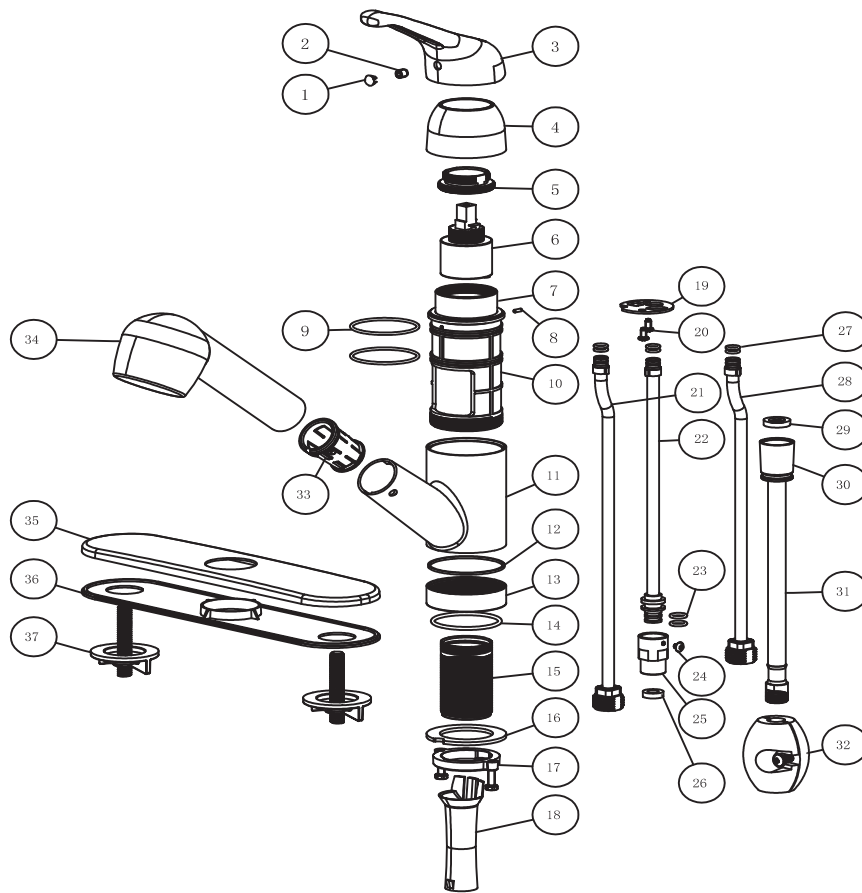
Chrome finish

Approval:
Meets or Exceeds The
following

*ANSI/ASME A112.18.1M

*ANSI/NSF 61-Sec.9

*IAPMO/CUPC



| No. | Component Description | No. | Component Description | No. | Component Description |
|-----|-----------------------|-----|-----------------------|-----|-----------------------|
| 1 | Index button | 14 | O-ring | 27 | Rubber ring |
| 2 | Screw | 15 | Shank | 28 | Copper tube |
| 3 | Loop Handle | 16 | Gasket | 29 | Gasket |
| 4 | Dome nut | 17 | Lock ring | 30 | Hose connector |
| 5 | Adjustment ring | 18 | Sleeve | 31 | Hose |
| 6 | Ceramic cartridge | 19 | Fixing clip | 32 | Counter weight |
| 7 | Mixer | 20 | Screw | 33 | spray sleeve |
| 8 | Screw | 21 | Copper tube | 34 | Spray head |
| 9 | O-ring | 22 | Copper tube | 35 | Cover plate |
| 10 | Waterway | 23 | O-ring | 36 | Bottom plate |
| 11 | Valve body | 24 | Screw | 37 | Fixing nut and stud |
| 12 | Gasket | 25 | Connector | | |
| 13 | Adjustment ring | 26 | Gasket | | |

