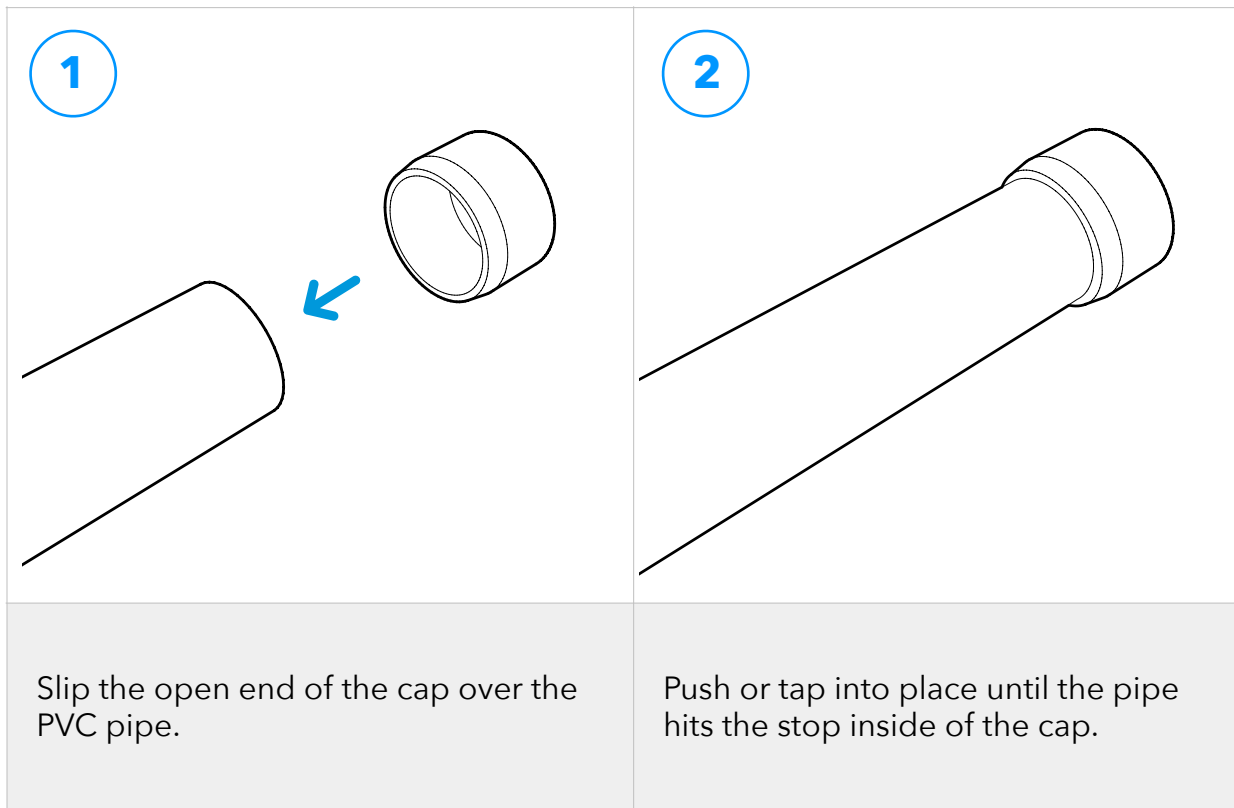


PRODUCT INSTRUCTIONS

External PVC End Cap

FORMUFIT External End Caps connect to a single piece of PVC pipe and gives a finished and clean look to projects and applications that have open ended pipe. To connect this product to PVC pipe, follow the instructions shown below.

Assembly



Securing

For permanent and strong connections, it is recommended to use PVC cement/solvent to attach the PVC pipe and the External Flat Cap.

You can also temporarily connect this cap by driving a self-tapping screw where the pipe and cap meet, or apply electrical tape over the end of the pipe before inserting into the cap for a temporary, yet strong connection.