

Welcome to RibbonFlex Pro® Custom Color RGB LED Tape Lighting

Ultra thin and flexible, RibbonFlex Pro® custom color RGB LED lighting is easy to install in straight, curved and irregular spaces – offering virtually limitless design and installation possibilities. With red, green and blue LED chipsets, RGB LED lighting can produce a near endless array of colors, plus shades of white, making it exceptionally versatile for creative accent lighting.

30 RGB LEDs per meter (9 LEDs per foot), model # RF5050030-V2RGB

- Use in a wide range of residential, retail, and commercial lighting applications
- Perfect for adding color above cabinets, in coves and tray ceilings
- Create drama by edge lighting counter tops and toe-kick areas

Requires a 12V DC power supply and an RGB color controller, available separately. RGB color controllers blend the red, green and blue LED colors to create custom colors and color-changing effects. Various models are available, to learn more visit armacostlighting.com.

Please read these guidelines completely before installing.

RibbonFlex Pro custom color RGB LED tape is a new and exciting type of lighting. It is important to read these guidelines completely to understand how the product works, and how it can be configured, cut to size, connected, and installed so you can design your LED lighting layout.

Installing tape lighting is an easy DIY project, however, basic wiring skills such as stripping, splicing, extending, and connecting wires are required.

This product operates on low voltage 12V DC power. 12V DC power supplies are sold separately and are available in different wattages.

Visit armacostlighting.com for additional installation tips, ideas, and latest product information.

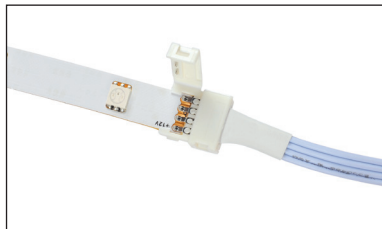
Cut to Size

Offers unlimited lighting design options for custom installations.



Connect with Ease

Use LED Snap Connectors to join strips and add power wires.



Peel and Stick

Simply remove 3M paper backing from LED tape lighting and stick in place.



IMPORTANT

- Use only with low voltage 12V DC power source and 12V DC RGB color controller
- Do not stare directly into the LED lights when illuminated
- Do not power LED tape while coiled on reel
- Always use the +12V/G/R/B indicators printed on the tape light to maintain polarity and correct color sequencing
- Do not install this product in areas that are susceptible to direct exposure to the elements
- Use only insulated staples, plastic ties, or wire support clips to secure cords and wires
- Route and secure wires so they will not be pinched or damaged
- For any wire runs inside of walls, use properly certified CL2 or better cabling
- Do not install Class 2 low voltage wiring in the same runs as AC main power. If AC and low voltage wires cross, keep them at 90-degree angles

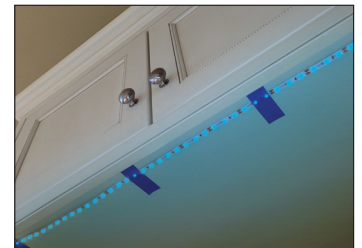
All wiring must be in accordance with national and local electrical codes, low voltage Class 2 circuit. If you are unclear as to how to install and wire this product, contact a qualified professional.

Planning

RibbonFlex Pro RGB LED lighting is designed for indirect lighting applications. The light from the LED tape is not to be seen directly by the eye. Every installation is unique and the illumination effects are personal preference. Installation location, wall colors, mounting angle, and the light's reflection off of walls, surfaces and objects will affect the final lighting appearance.

Installation considerations

- Where will you locate your power supply and RGB controller?
- How will you switch your LED lighting on and off?
- What is the best layout configuration for your installation?
- How will you run and conceal the wires to your LED tape lighting?

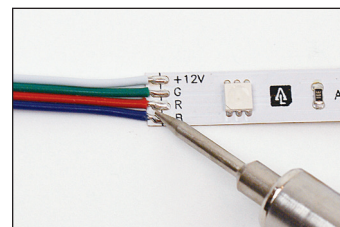


Temporarily mounting the LED light strip using painter's tape allows you to experiment with tape light positioning before permanent installation.

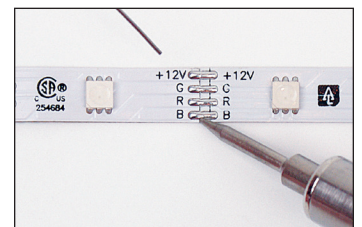
Important: Using painter's tape or masking tape, temporarily place the LED light strip into your desired mounting position. Power on the LEDs to make sure you are achieving the desired lighting effect before removing the 3M paper backing for final installation.

Optional Soldering of RibbonFlex Pro

Soldering is a fast and easy way to join wires and make splice connections. It is also the surest method for making extra reliable electrical connections.



Wire Lead Connection



Splice Connection

To learn how to solder RibbonFlex Pro, visit armacostlighting.com/installation.

Note: Soldering connections is required for marine or RV applications due to vehicle movement and vibrations.

Power supply location and voltage drop

The power supply that provides 12V DC power to your LED tape lighting operates on 120V AC household current. The shorter the wire lead between the power supply and the LED tape lighting, the brighter the lights will be. If the RGB LEDs farthest from the power supply appear dim or you see a color shift, it is due to voltage drop.

Voltage drop only becomes undesirable if you notice the brightness or color in one area of your lighting is objectionably different than in another area. As a practical approach, test your RGB LED lighting prior to final installation. Refer to the chart below for recommended lengths of power feed wires using 22 and 18 AWG wires.

Excessive voltage drop = reduced brightness and color accuracy

Shorter and/or thicker wires = higher brightness and color consistency

Longer LED tape = an increase in voltage drop

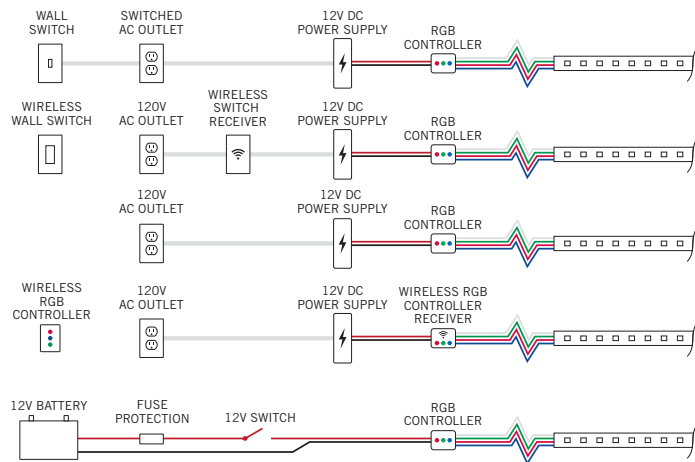
Recommended maximum length of 12V power wires from power supply to LED lighting			
22 AWG WIRE		18 AWG WIRE	
If your LED tape light length is:	Max wire length to tape light	If your LED tape light length is:	Max wire length to tape light
8 Feet	12 Feet	8 Feet	24 Feet
16 Feet	10 Feet	16 Feet	20 Feet
24 Feet	8 Feet	24 Feet	16 Feet
32 Feet	4 Feet	32 Feet	8 Feet

For an online voltage drop calculator, visit armacostlighting.com/installation.

Switching and color control options

Depending on the model and location of your RGB color controller, you may be able to conveniently use that device to switch on/off your LED lighting. Other options include plugging your power supply into a switched 120V AC outlet or using an optional Armacost Lighting wireless wall switch. For current product information on RGB color controllers, visit armacostlighting.com.

TYPICAL CONNECTING AND SWITCHING OPTIONS



Interior RV and boat applications can be powered directly by 12V battery

Configuration options

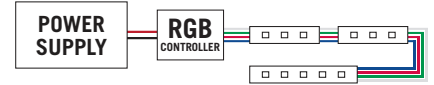
RibbonFlex Pro Custom Color RGB tape lighting offers endless connection options to fit virtually any installation imaginable. LED tape strips can be installed in series (strips connected or wired end-to-end) or in parallel (multiple legs of LED strips or series of strips wired directly to a single power supply).

LED tape lighting power requirements are based on several factors, including your configuration (Straight Run, Center Feed/Loop Back or Array), voltage drop, and the length limitations of the LED tape lighting.

TYPICAL CONFIGURATIONS

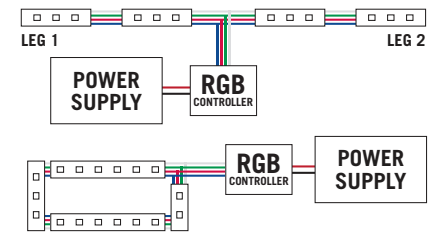
Straight Run

Only one end of the LED strip is powered. Multiple strips can be connected in a series for a continuous run. When set at 100% cool bright white, RGB LEDs farther away from the color controller may color shift to a warmer white.



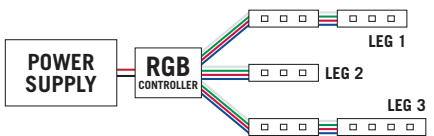
Center Feed / Loop Back

Either power two equal legs of tape lighting from the center or loop back and power both ends of the LED tape. These configurations will produce more consistent brightness and color over the length of the strip. A loop back is excellent for room perimeter tray ceiling or cove lighting.



Array

An array uses two or more legs of various lengths wired to an RGB controller in a parallel connection. You will need to calculate total wattage used in an array to guard against overloading the power supply.



Choosing a power supply

Refer to the charts below for the recommended maximum lengths of RGB LED tape lighting based on your configuration and choose a power supply rated greater than your needs – you cannot overpower LED tape lighting. The LED power requirements shown below are for when the RGB color controller is set at 100% full power brightness white and do not represent every possible installation scenario.

For power supply options visit armacostlighting.com/power-supply.

Maximum length of LED tape based on configuration type and power supply

Power Supply	Straight Run	Center Feed / Loop Back
15 Watt	6.6 ft (2.0m)	Not recommended
30 Watt	16.4 ft (5.0m)	13.1 ft (3.0m)
60 Watt	32.8 ft (10.0m)	32.8 ft (10.0m)

Length limitations indicated here are based on the inherent limitations of the RGB LED tape due to voltage drop in a straight run. Exceeding these lengths will cause LEDs farthest from the power supply to color shift when at 100% full bright white. A higher wattage power supply will not reduce the impact of voltage drop. For more consistent brightness consider a center feed or loop back configuration.

Array power supply calculation

Due to voltage drop, longer lengths of LED tape will use fewer watts per foot than shorter lengths. The total watts used in an array layout depend on the wattage requirement of each leg and overall voltage drop within your connection wires. A leg can be a single LED strip or series of strips connected end-to-end. Various legs are wired in parallel directly to the power supply.

Calculate the wattage for each leg by multiplying watts per foot by the length of LED lighting in the leg. Include only the lengths of LED tape in your calculation, not the connecting wires. Add each leg's wattage requirement together to determine the total watts needed to power your array and select a power supply that exceeds the total watts needed.

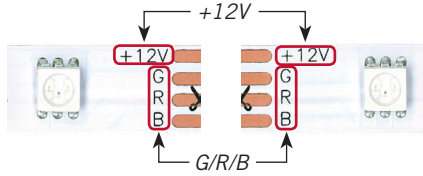
Length of leg (LED tape light only)	1 to 5 feet	6 to 11 feet	12 to 15 feet
Watts used per foot	2.5 watts/ft	2.2 watts/ft	2.0 watts/ft

Cutting, connecting and wiring

Warning: Do not connect LED tape to household 120V AC power. Only connect to low voltage 12V DC power.

Always maintain correct RGB wire polarity when connecting RGB LED tape lighting.

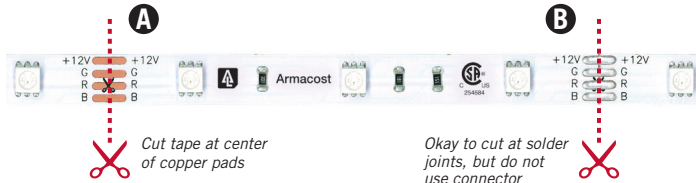
Use the +12V/G/R/B indicators printed on the RGB tape light to maintain polarity and correct color sequencing.



Cut with scissors

This RGB tape light model can be cut every 3 LEDs, or about every 4".

- To use solderless LED Snap Connectors, cut the LED tape with scissors directly in the center of the copper pad as shown in position "A" below.
- You can also cut the tape at position "B," however, do not use Snap Connectors on these soldered tape light joints.
- You can solder 12V power lead wires at these joints.



Wire Lead Snap Connectors

Wire Lead Snap Connectors are used for going around corners or, when cut in half, to create two power leads ("jumper" cables) for linking and extending RGB power wires to LED tape lighting in other areas.

IMPORTANT: Always use the +12V/G/R/B indicators printed on the tape light to maintain polarity and correct color sequencing.



To make longer "jumper" cables
Cut in half to create two wire lead connectors that can be spliced to longer wires in order to get power to LED tape strips in other areas.

Bridging gaps and extending wires

To increase the length of wire between two LED strips, simply splice in the extra length of wire required, 18 AWG is generally recommended. Be sure to match polarity, +12V/G/R/B to +12V/G/R/B. Do not coil wire; shorter lengths and thicker wire will mean less voltage drop and higher brightness. For an online voltage drop calculator, visit armacostlighting.com/installation.



Be sure all 12V connections are secure and sealed. Options include soldering and heat-shrink tubing, crimp connectors, terminal blocks, wire nuts, etc.

Splice Snap Connectors

Splice Snap Connectors are for joining two strips to create a continuous run of LED lighting.

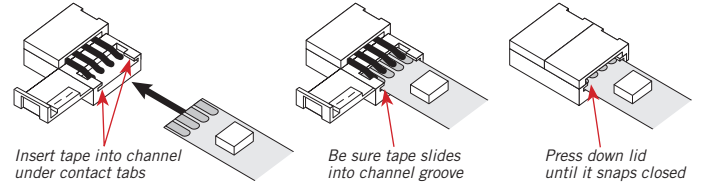
RGB Splice Snap Connector



If the +12V/G/R/B marks do not line up, flip the tape strip and use the opposite end for proper +12V/G/R/B alignment.

How to use Snap Connectors

- Pry open lid on the snap connector (splice connector has two lids).
- Using a side-to-side motion, carefully slide tape strip into connector channel as shown below so the copper pads on the tape are positioned underneath the connector contacts.
- Close and snap down lid connector.
- Perform a power test to be sure connection is secure and LEDs light before final installation.
- If LEDs do not light, or LEDs flicker, repeat the steps outlined above.



Surface preparation and installing peel-and-stick LED tape lighting

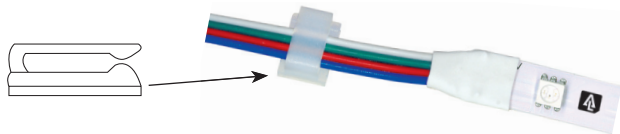
Before removing the 3M tan colored paper backing, it is important to test the LED strip in the space you intend to light. Once the paper backing is removed and the lighting is fully installed, you cannot reposition or move the LED tape light to another location. The tape may not stick securely.

- Power the LED tape lighting and temporarily hold or tape into position with painter's tape or masking tape – do not remove the 3M paper backing.
- Adjust the lighting to various angles and positions to get the desired level of illumination and lighting appearance. If the LEDs create undesirable bright spots on walls, or reflections, reposition the tape light strip farther away from surfaces or try a different mounting angle.
- Once you have determined your final mounting position, clean and prep the surface to ensure the 3M self-adhesive backing will adhere properly.

IMPORTANT

- Mounting surfaces should be smooth, clean, completely dry, dust free and above 60°F (15 °C) before installing/sticking the LED tape lighting.
- Thoroughly clean all mounting surfaces with a 50:50 mixture of isopropyl alcohol and water. For extra dirty surfaces, first use 100% alcohol or acetone. Avoid the use of household cleaners and polishes that may leave behind residues. Also avoid common rubbing alcohol because it frequently contains oils that can interfere with the performance of the 3M adhesive tape.
- For best adhesion – especially when sticking to the underside of cabinets – lightly sand the surface where you will mount the tape lighting. This includes unfinished woods, plastics/laminates and all painted surfaces. Use a very fine grit sandpaper (150-300 grit) and sand in a circular motion rather than straight-line motion for best results.
- When installing on painted surfaces, paint should be fully cured based on manufacturer's cure time.
- Be careful not to peel off the 3M adhesive from LED strip, just remove the tan paper backing. If using LED Snap Connectors, carefully cut the tan backing when it enters the connector. It is beneficial to leave the 3M backing paper inside the connector.
- 3M sticky back tape requires pressure to activate the adhesive. Using a clean dry cloth over your fingers and working from one end to the other, firmly press the tape down the entire length of the strip.

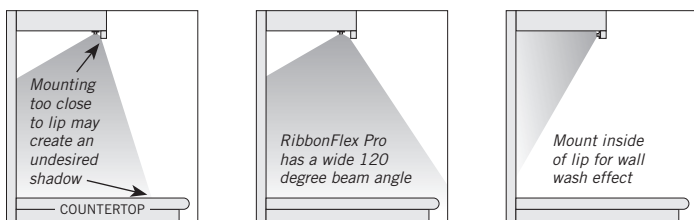
- Be sure to support power wire leads using peel-and-stick wire support clips, as shown, especially when mounting under cabinets. The weight of a fallen wire lead can pull down the tape lighting, especially on new installations. Note that after 24 hours, 75-80% bond strength is achieved. After 72 hours, 95%+ of the bond strength is achieved. The adhesive bond will continue to build with time.



Although RibbonFlex Pro can be installed in curved and irregular spaces, avoid sharp bends or bending on the solder joints as you could damage the LED tape light. If an LED is inadvertently damaged and fails to light, the remaining LEDs will continue to operate. RibbonFlex Pro is made with 3 LEDs connected as one series. If you experience a failure, you can cut out and remove the damaged 3-LED series and splice together new and/or remaining LED tape.

Under Cabinet

To surface mount LED tape lighting under a set of cabinets in one continuous run, you may need to drill a 1/2" hole through any cabinet side lip that may be present. Install LED tape lighting through the hole and surface mount as a continuous run.

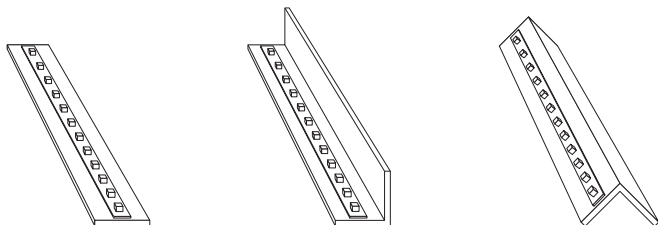


When mounting under a cabinet or a shelf with no lip to hide the LED tape light strip, create a visual barrier by using trim strip molding mounted in front of the LED tape light.



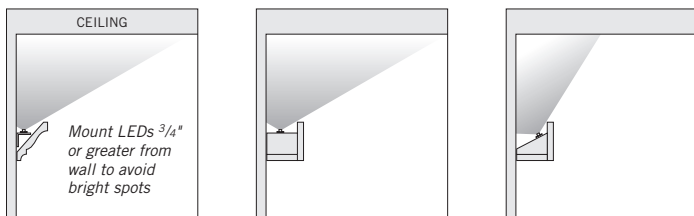
Above Cabinet Uplighting

Most cabinet tops have uneven surfaces. To create beautiful indirect uplighting over cabinets, simply mount RibbonFlex Pro on any rigid strip (e.g., thin lattice or corner guard molding) and place on top of cabinets. Angle the strip position to achieve the desired illumination.



For a seamless glow and to avoid bright light spots, keep LED tape light strip at least 3/4" away from walls.

Cove Lighting



Troubleshooting

RGB tape light strip does not light

- Make sure your LED power supply is turned on and receiving power.
- Confirm you have maintained correct polarity (+12V/G/R/B to +12V/G/R/B) when connecting your 12V power supply to your RGB controller, and ensure that you have maintained polarity and consistent wire color sequencing (+12V/G/R/B) from the RGB controller to your LED tape light.
- Check all tape light and RGB controller connections from the power supply to the RGB LED tape light. Consider testing with a multimeter to ensure light strip is receiving 12V power.

Only part of the LED tape light strip is lit

- Check connections to the part of the strip that is not lit.
- Confirm that you have maintained correct polarity and wire color sequencing to the unlit section.
- If only 1 LED series is out, cut out and remove the damaged 3-LED group and splice together LED tape strips or replace with new 3-LED section.

LED tape lights blink on, then go off

- Your power supply is not adequate for the length of RGB LED tape light you are powering. Install a higher wattage power supply or reduce watts used by shortening the lengths of your LED tape lighting.

LEDs farthest from the power supply are noticeably dimmer or you see a color shift

- This is the result of voltage drop. Decrease the length of the 12V power feed wires or use thicker power feed wires between the 12V power supply, the RGB controller, and the tape lighting.
- Use shorter lengths of RGB LED tape lighting. Refer to **Configuration options** in these guidelines. Consider a different configuration.

Visit armacostlighting.com/installation for additional installation tips and FAQs.

Limited 3-year warranty

Improper installation, improper powering, abuse, or failure to use this LED tape light for its intended purpose will void warranty. LED tape light cannot be returned or exchanged once cut unless under warranty replacement. Proof of purchase is required for all returns. Questions? Email support@armacostlighting.com.

SPECIFICATIONS

Input Voltage.....	12V DC
LED Count	30 LEDs/m
LED Module	SMD 5050 tri-chip RGB
Beam Angle	120° wide
Tape Height/Width	2 x 10mm
Cuttable.....	Every 4" approx (100mm)
Listings	CE, RoHS, CSA
Country of Origin	China



140 Baltic Avenue
Baltimore, MD 21225

armacostlighting.com

