

# HIDE • A • VENT

YOUR VENTS SHOULD BE HIDING  
IN PLAIN SIGHT



TRADITIONAL VENTS

## DIY-ers, Contractors and Architects

Upgrade your exterior design with virtually invisible vents that maintain the functionality needed for residential venting systems. Hide-A-Vent is able to blend into any siding, increasing the aesthetic appearance of the vent, siding, and structure. All Hide-A-Vent models are proudly made in the USA and constructed of ABS plastic that can be mounted to exterior walls of any structure.



- **CUSTOMIZABLE** - To any siding including clapboard, shingles, and vinyl
- **EASY TO INSTALL** - As easy as traditional vents
- **REDUCES BACKDRAFT** - Reducing loss of heat/air conditioning
- **QUIET** - Designed to eliminate noise from rain and wind
- **ENGINEERED** - Greatly reduces pest and bird penetration



[HideAVent.com](http://HideAVent.com)

1-857-259-VENT (8368) | [info@hideavent.com](mailto:info@hideavent.com)  
182 Summer Street #247, Kingston, MA 02364

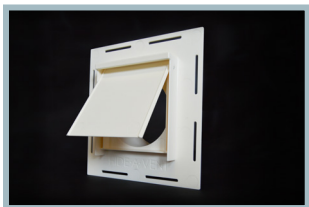
# HIDE • A • VENT

## 4" ROUND

Designed for: Dryer Vents & Ceiling Fan Vents

Replaces: Vent, Flashing, Block

### Model A



#### INCLUDED IN PACKAGE:

- (1) 4" round vent
  - (1) Piece double sided tape for optional siding application.
- \* 1 year limited warranty

#### HOLE DIMENSIONS:

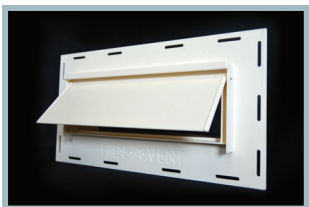
- Model A = 4.25"

## RECTANGULAR OPENING

Designed for: Microwave Hoods/Most Residential Kitchen Hoods

Dimensions: 3 1/4" x 10 1/4"

### Model B



#### INCLUDED IN PACKAGE:

- (1) Rectangular vent
  - (1) Piece double sided tape for optional siding application.
- \* 1 year limited warranty

#### HOLE DIMENSIONS:

- Model B = 3.75" x 10.75"

## INSTALLATION INSTRUCTIONS:

- Figure course height of siding.
- Drill hole at desired location.  
(See model for appropriate dimensions.)
- Place vent through hole.
- Level and nail hide a vent to siding through nailing slots.
- Cut siding of choice, cut from middle section of shingle, top edge, not to exceed 3/16" thick, to fit between ridges on damper and seal back side, let dry.
- Apply double sided tape to damper.
- Apply siding to damper, press on using firm even pressure for 15 seconds.
- Continue siding installation around vent.

Installation videos available online at: [www.HideAVent.com](http://www.HideAVent.com)

HideAVent.com

1-857-259-VENT (8368) | [info@hideavent.com](mailto:info@hideavent.com)