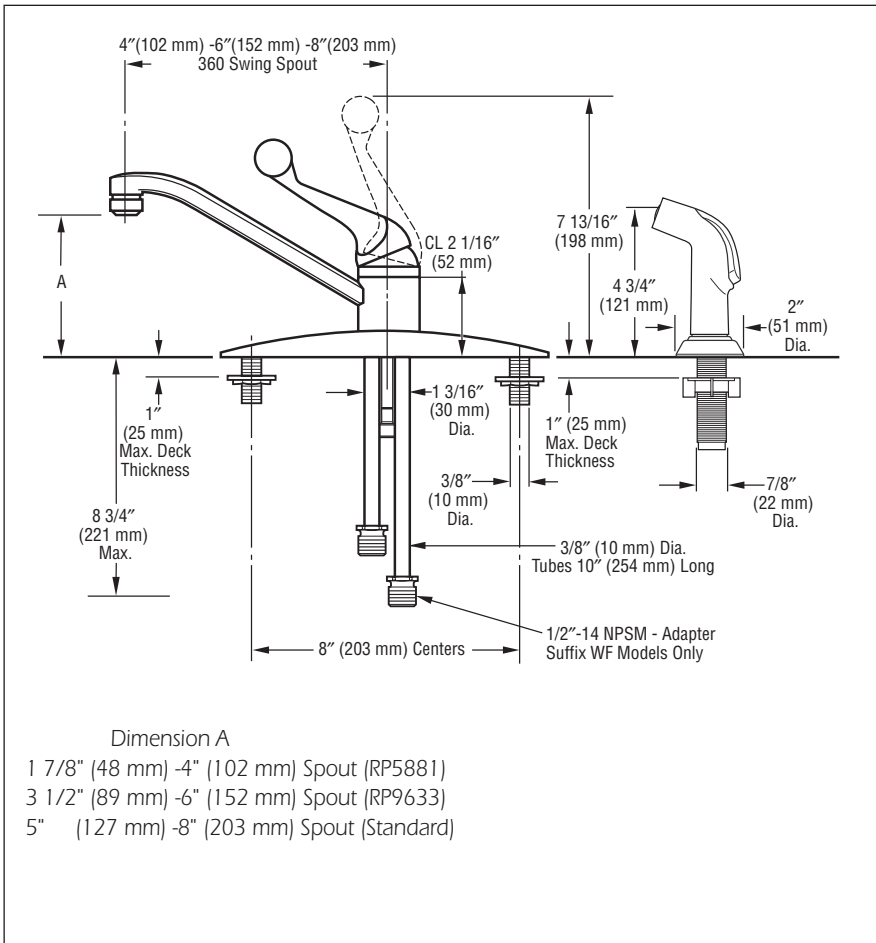


Submitted Model No.: _____

Specific Features: _____



see what Delta can do™

KITCHEN FAUCETS

- Classic Series
- Single Handle Deck Mount


STANDARD SPECIFICATIONS:

- Maximum 1.8 gpm @ 60 psi, 6.8 L/min @ 414 kPa
- Three or four hole mount
- Spout rotates 360°
- Control handle shall return to neutral position when faucet is turned off
- Control mechanism shall be of the rotating stainless steel ball type with replaceable non-metallic seats operating in stainless steel lined sockets
- Model 400 series with spray attachment has anti-siphon device as integral part of valve body
- Model 100 and 400 series without dispenser can be field converted from 8" (203 mm) to 6" (152 mm) centers
- 3/8" O.D. copper tube inlets
- Vegetable sprayer hose with chrome sprayhead on model 400 series - 45" (1143 mm) long threaded hose
- Models supplied with 1/2"-14 NPSM adapters

WARRANTY

- Lifetime limited warranty on parts (other than electronic parts and batteries) and finishes; or, for commercial users, for 5 years from the date of purchase.
- 5 year limited warranty on electronic parts (other than batteries); or for commercial users, for 1 year from the date of purchase. No warranty is provided on batteries.

COMPLIES WITH:

- ASME A112.18.1 / CSA B125.1
-  Indicates compliance to ICC/ANSI A117.1
- Verified compliant with .25% weighted average Pb content regulations.

Delta reserves the right (1) to make changes in specifications and materials, and (2) to change or discontinue models, both without notice or obligation. Dimensions are for reference only. See current full-line price book or www.deltafaucet.com for finish options and product availability.

DSP-K-100LF-WF Rev. D

Delta Faucet Company

55 E. 111th Street, Indianapolis, IN 46280
 350 South Edgeware Road, St. Thomas, ON N5P 4L1
 © 2018 Delta Faucet Company